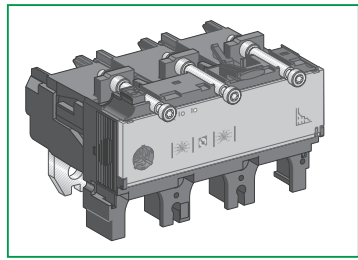


ComPact NSX400-630

MicroLogic 1.3/2.3/5.3/6.3 Trip Units  
 Déclencheurs MicroLogic 1.3/2.3/5.3/6.3  
 Unidades de control MicroLogic 1.3/2.3/5.3/6.3  
 MicroLogic 1.3/2.3/5.3/6.3 脱扣单元



Schneider Electric

GHD16240AA-09

www.se.com



PLEASE NOTE

- Electrical equipment should be installed, operated, serviced, and maintained only by qualified personnel.
- No responsibility is assumed by Schneider Electric for any consequences arising out of the use of this material.

REMARQUE IMPORTANTE

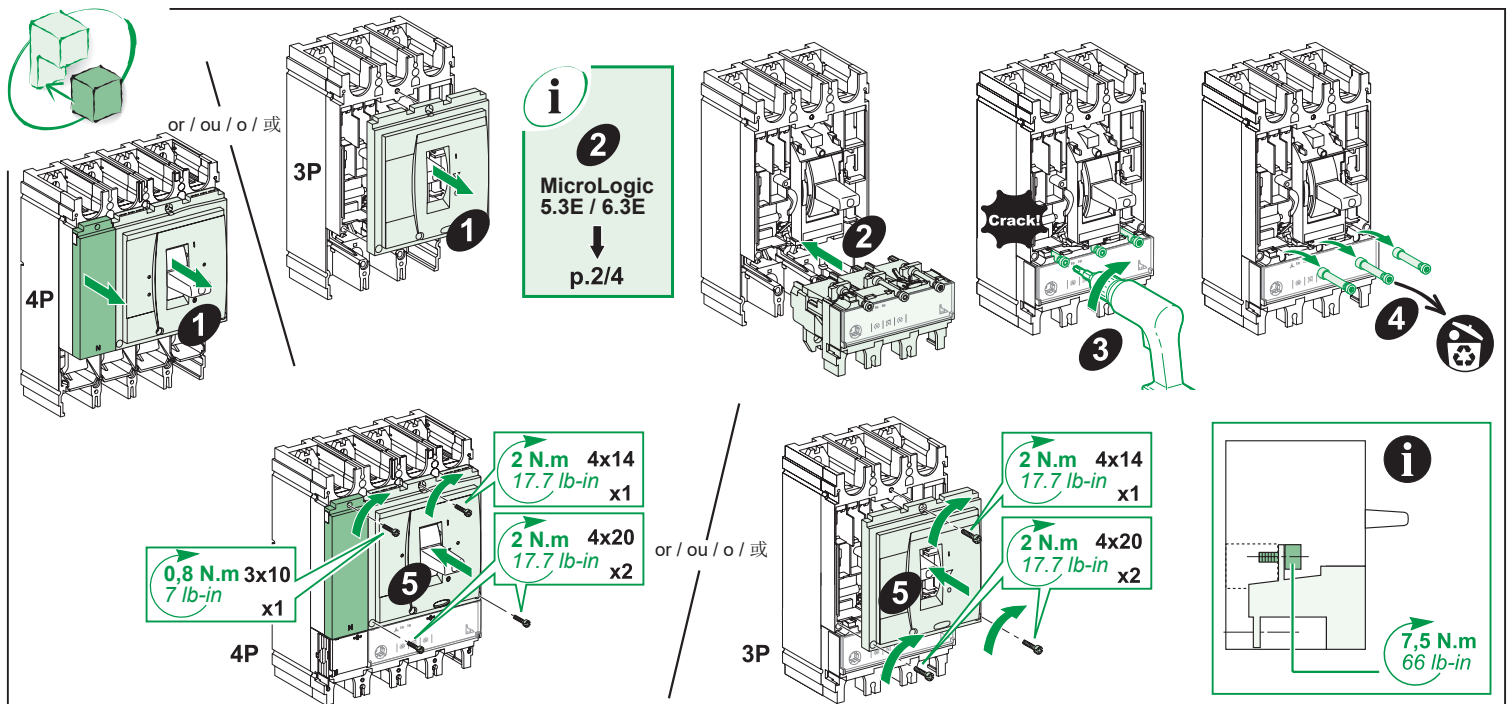
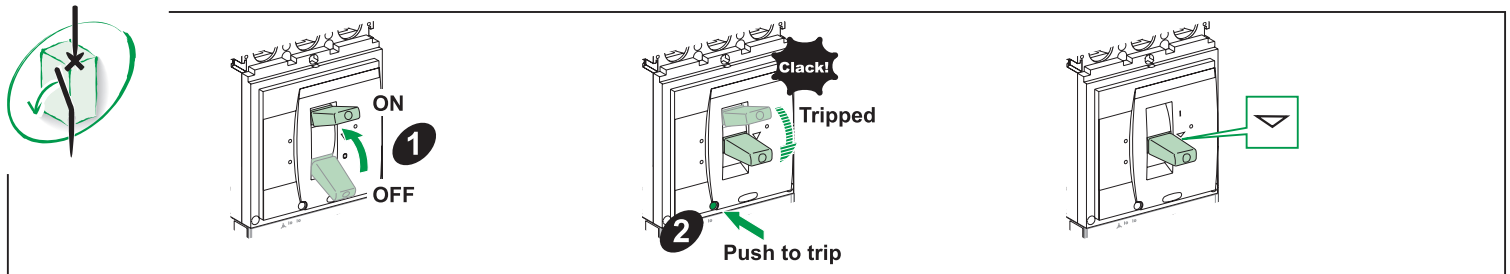
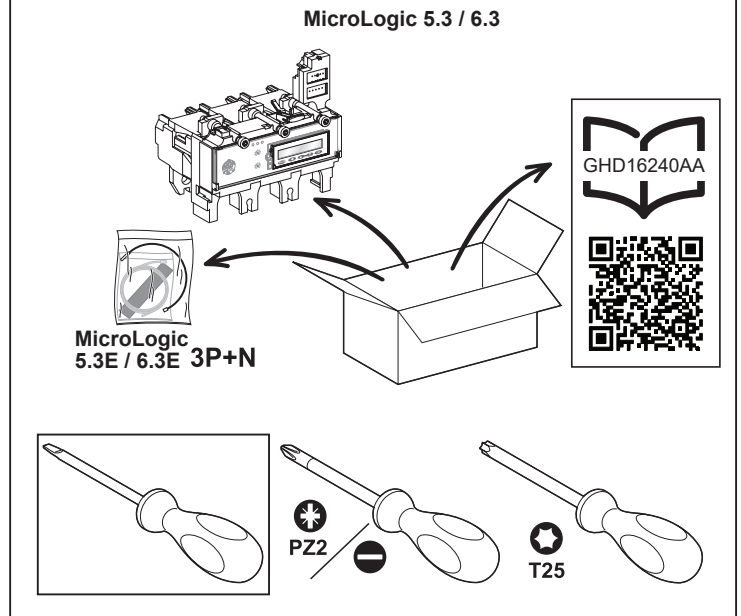
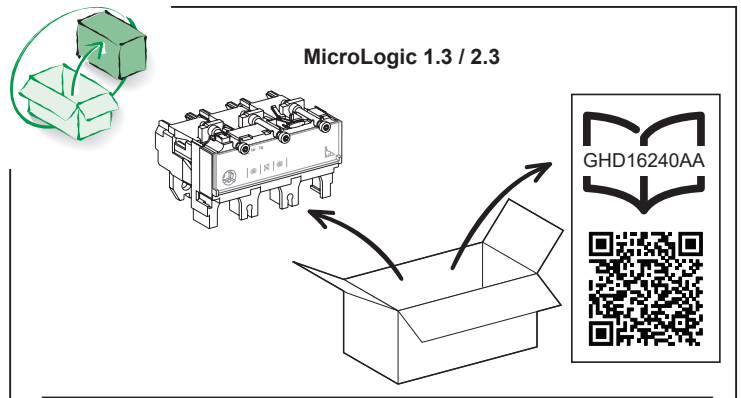
- L'installation, l'utilisation, la réparation et la maintenance des équipements électriques doivent être assurées uniquement par du personnel qualifié.
- Schneider Electric décline toute responsabilité quant aux conséquences de l'utilisation de ce matériel.

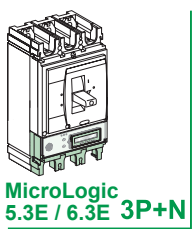
TENGA EN CUENTA

- La instalación, manejo, puesta en servicio y mantenimiento de equipos eléctricos deberán ser realizados sólo por personal cualificado.
- Schneider Electric no se hace responsable de ninguna de las consecuencias del uso de este material.

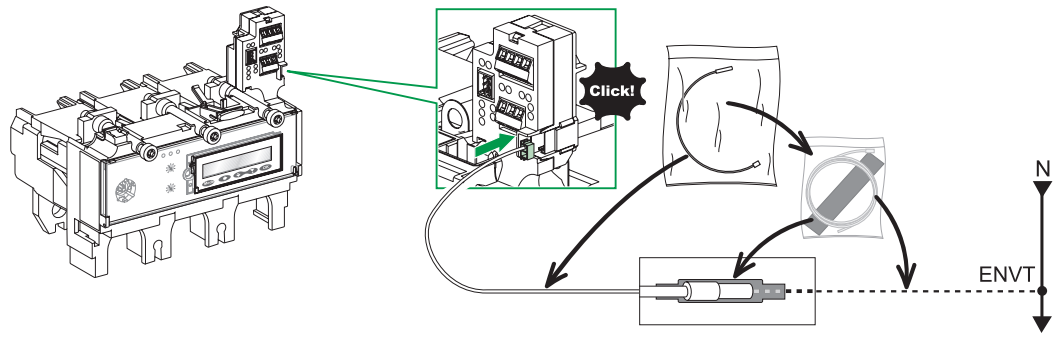
请注意

- 电气设备的安装、操作、维修和维护工作仅限于合格人员执行。
- Schneider Electric不承担由于使用本资料所引起的任何后果。

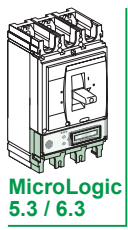




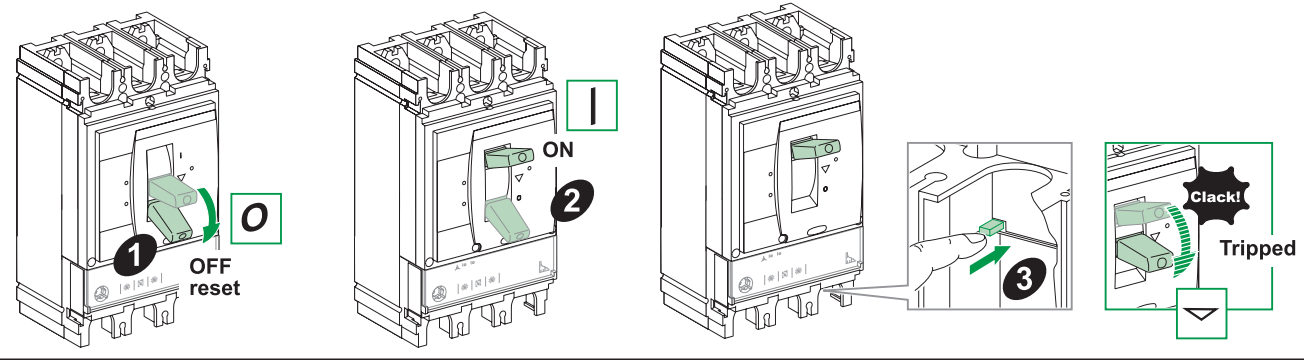
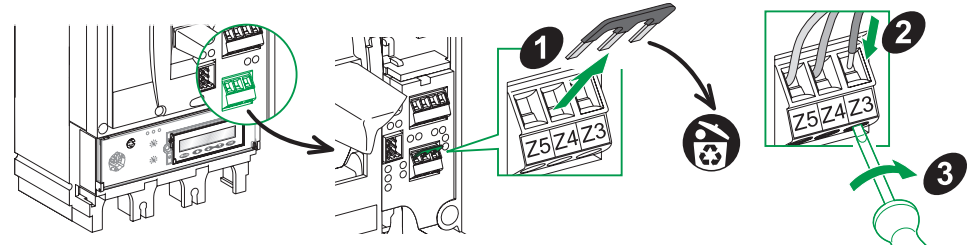
MicroLogic 5.3E / 6.3E 3P+N



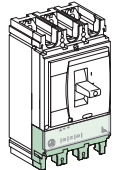
ZSI



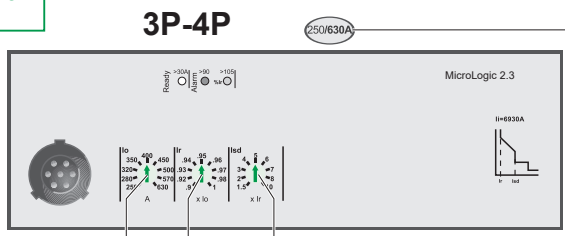
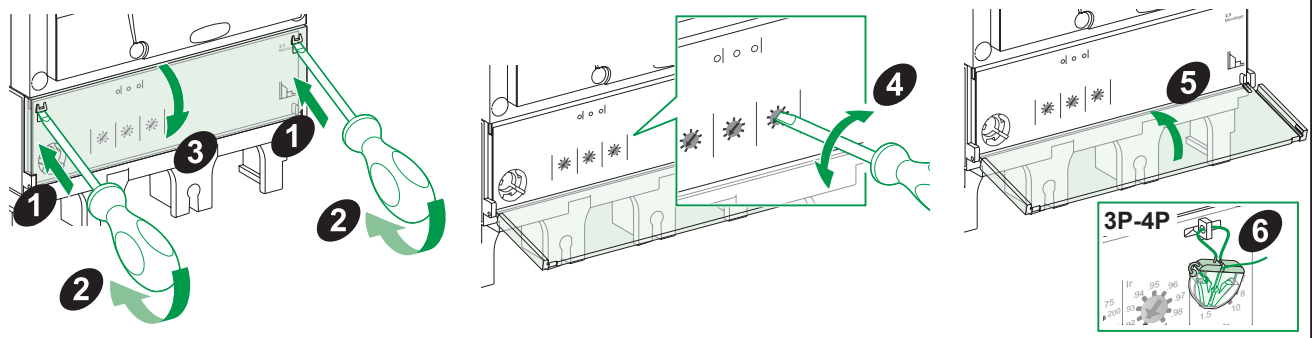
MicroLogic 5.3 / 6.3



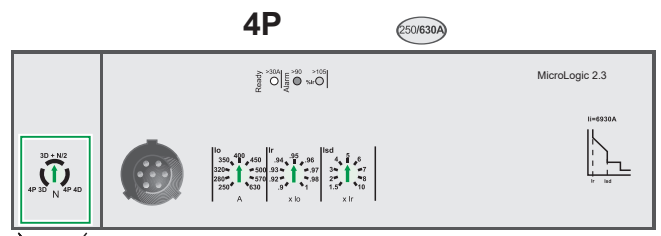
Ir, Isd



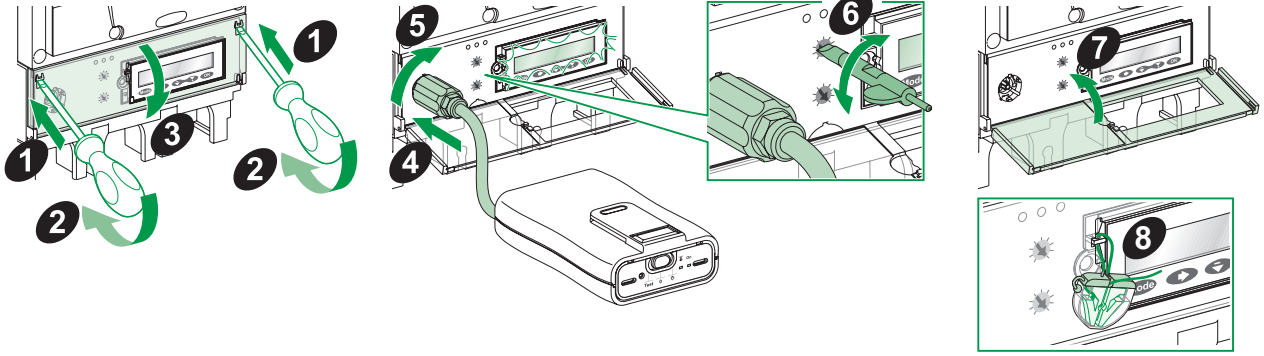
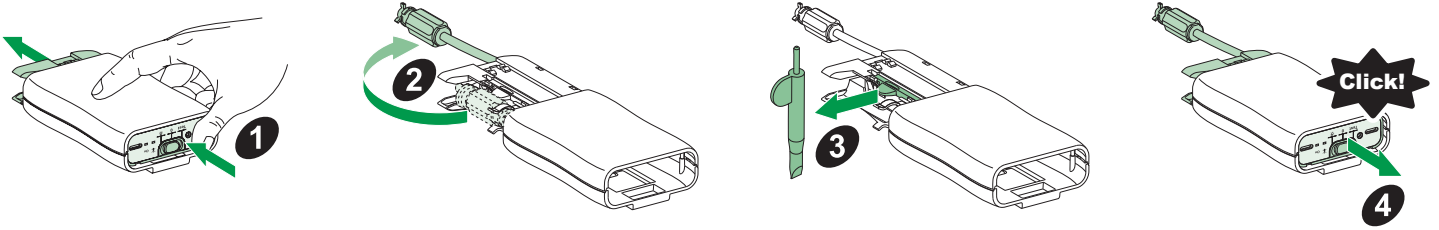
MicroLogic 1.3 / 2.3



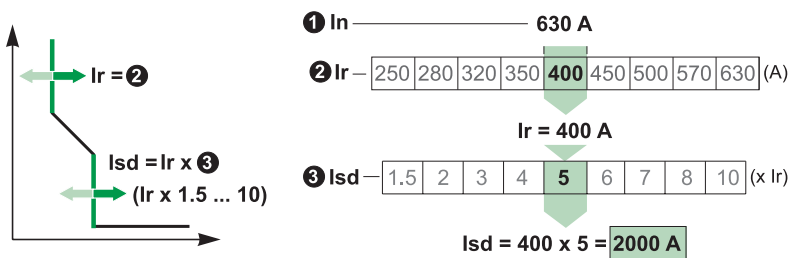
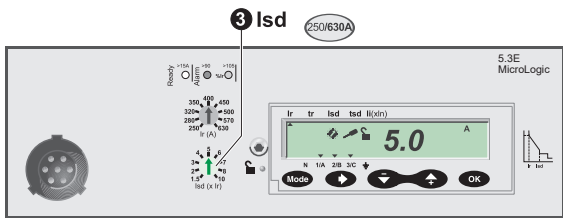
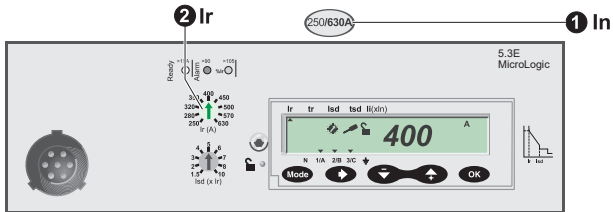
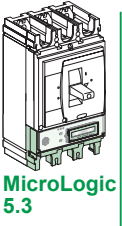
1 In	630 A
2 lo	250 280 320 350 400 450 500 570 630
3 Ir	.9 .92 .93 .94 .95 .96 .97 .98 1
Ir = 400 x 0.95 = 380 A	
4 Isd	1.5 2 3 4 5 6 7 8 10
Isd = 380 x 5 = 1900 A	



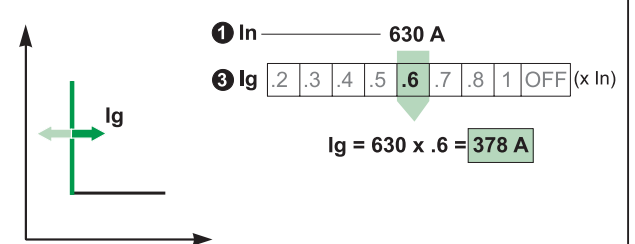
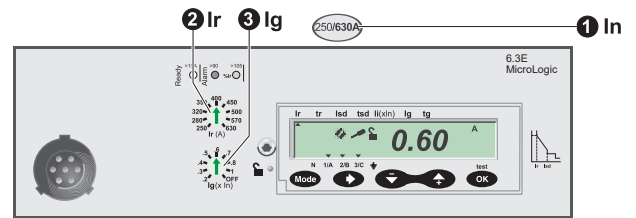
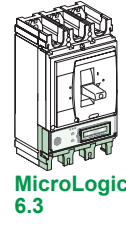
N	N
4P 3D	OFF
3D + N/2	Ir/2
4P 4D	Ir

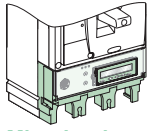


**Ir, Isd**



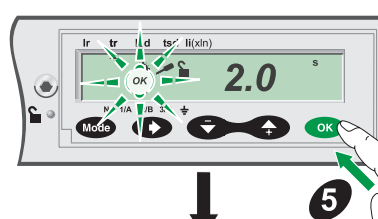
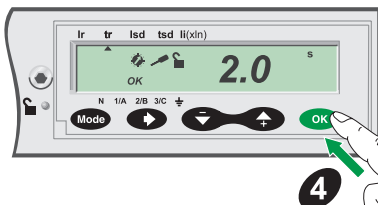
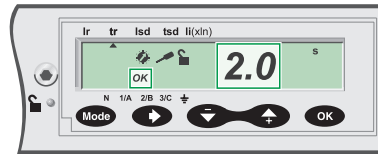
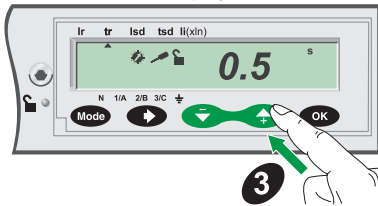
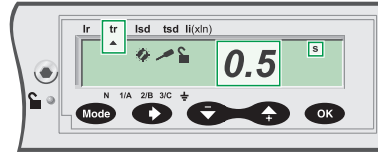
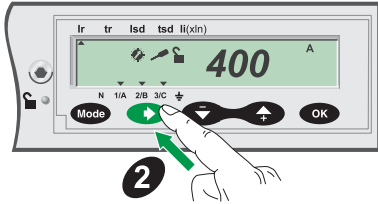
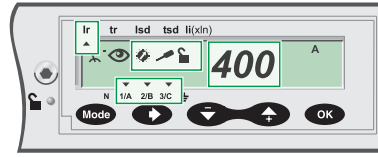
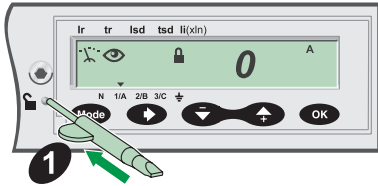
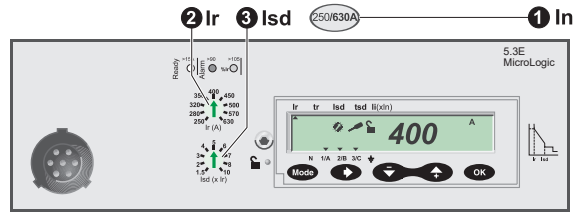
**Ir, Ig**





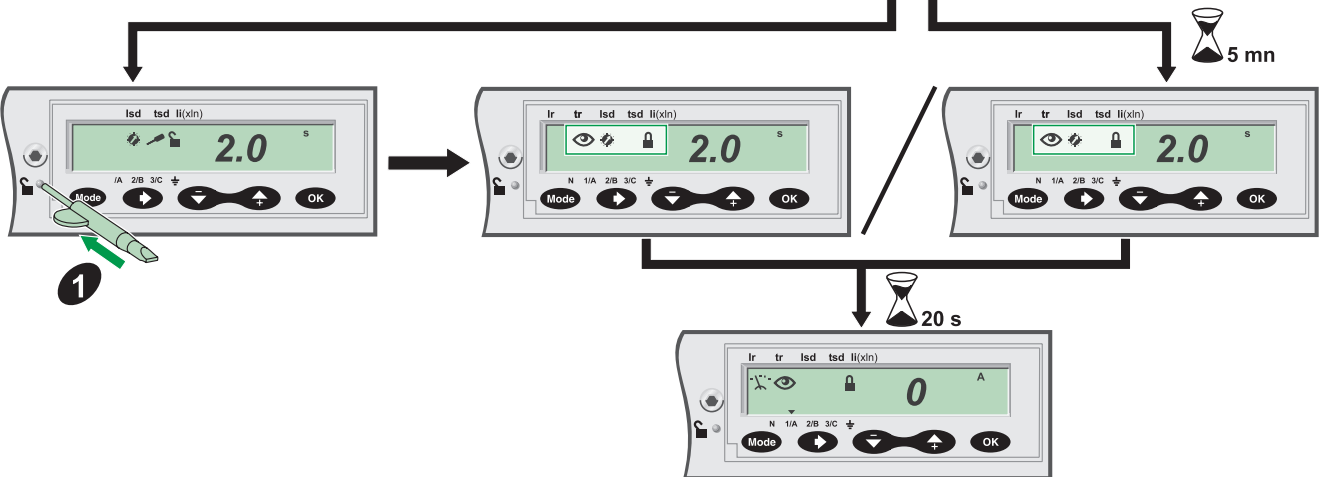
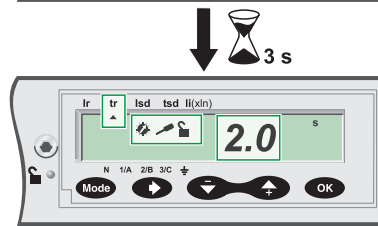
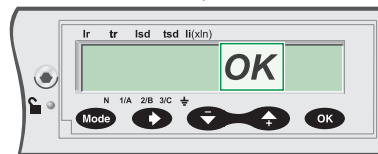
MicroLogic  
5.3 / 6.3

5.3 Ir, tr, lsd, tsd, li  
6.3 Ir, tr, lsd, tsd li, lg, tg  
tr @ 6 Ir



**i** **DOCA0141EN**  
**DOCA0141FR**  
**DOCA0141ES**  
**DOCA0141ZH**

MicroLogic User Guide



Schneider Electric Industries SAS  
35 rue Joseph Monier  
CS 30323  
F - 92506 Reuil Malmaison Cedex  
www.se.com



Printed on recycled paper.

Schneider Electric Limited  
Stafford Park 5  
Telford, TF3 3BL  
United Kingdom  
www.se.com/uk

