



# The Actassi system

Catalogue 06-2019

Seamless end-to-end network connectivity

[se.com](http://se.com)

Life Is On

**Schneider**  
Electric

# Actassi puts all the differences aside!



The best features of our local brands and ranges are now merged into one, complete global system – Actassi.

# Actassi Copper solution

<b>Connectors S-110</b> .....	<b>14</b>
Category 5e unshielded .....	14
Category 6 unshielded .....	15
Category 6A unshielded (Special order only) .....	16
Category 5e, Category 6, Category 6A, shielded (Special order only).....	17
Accessories .....	18
<b>Ceiling solutions</b> .....	<b>19</b>
Accessories .....	19
<b>Cables</b> .....	<b>21</b>
Copper LAN cables - Category 5e.....	21
Copper LAN cables - Category 6.....	22
Copper LAN cables Category 6A .....	23
<b>Copper patch cords</b> .....	<b>24</b>
Category 6 .....	24
<b>Panels</b> .....	<b>26</b>
S-110 .....	26
<b>Cable management and accessories</b> .....	<b>28</b>
S-110 .....	28
<b>Index</b> .....	<b>29</b>
<b>Note</b> .....	<b>30</b>



# A short Actassi summary

Actassi is Schneider Electric's new portfolio for networking and connectivity infrastructure solutions, created specifically with the building environment in mind. Security and Building Management Systems require unique products designed for the ceiling environment. Providing the right products designed for simple and fast installations is what Actassi is about.

Actassi consists of the best performing features from Schneider Electric's global offering. To be able to offer every installer around the world, the best-of-class solutions, we have created ONE single system ; Actassi.

All products are designed to give superior usability and performance. They exceed the most advanced international standards, such as ISO/IEC 11801: 2011 Ed2.2 for the new S-110 connector. All S-110 connectors are manufactured to provide exceptional Cat 5e, Cat 6 and Cat 6<sub>A</sub> performance for unshielded data networks.

The Actassi system consists of a comprehensive set of products:

- > Jacks for Cat 5e, Cat 6 and Cat 6<sub>A</sub> standards
- > Plenum rated solutions for the ceiling
- > Patch panels
- > Copper LAN cables
- > Patch cords and connecting hardware
- > Cable management



# Building Actassi



**Green Premium** to guarantee our products are compliant with International Environment Regulations & Standards (RoHS, REACH, PEP and EoLI)



Reliable cabling solution & proven technology backed by **extended system warranty**



Superior connectivity with compliance of **international standards (TIA/EIA, ISO/IEC, AS/NZ)**



Apply the latest building management technologies with **proven PoE+ connectivity** to increase efficiency of power usage

# Complete peace of mind



We offer comprehensive training programs as well as extensive warranties.



P126881

## Certified standard and global accessibility

All Actassi products are certified to the highest standards by a third party. Several products actually exceed international standards to give you true top-class performance and reliable connectivity. Our worldwide presence and well-known distribution partners also ensure both global and local access to our products and services.



P130046

P63308

You will get it right, intuitively

# Environment in focus

## Eco-design

The European Union enacted an Energy using Products (EuP) framework directive in 2005 (directive on the eco-design of products) which seeks to promote eco-design approaches in priority sectors, or even to specify the aims of impacts for some products.

Although Schneider Electric's supply is outside of the EuP target, it generalises the eco-design approach to all its developmental activities and undertakes to communicate the environmental features of its products through Product Environmental Profiles (PEPs).

## Product Environmental Profile

For each product Schneider Electric undertakes to publish a Product Environmental Profile (PEP). It provides customers with information on their environmental performances during their life cycle as well as the best treatment solutions at the end of their life. To ensure transparency and the validity of the data, it complies with ISO 14025 in an inter-professional programme which sets shared calculation and drafting rules for publishing the environmental impacts of products.



# Actassi 19" patch panels

The Actassi 19" panels are indeed an installer's delight. They are innovative, simple and efficient. They are also part of the global Actassi product portfolio for Network Connectivity including connectors, cables and patch cords. Actassi is also a vital component of TOP – the Total Office Performance system – making workspaces energy efficient, flexible and comfortable. TOP includes everything from power and data distribution, to safety systems and lifespace controls. So, when you choose Actassi you'll get superior usability and a truly seamless end-to-end connectivity.



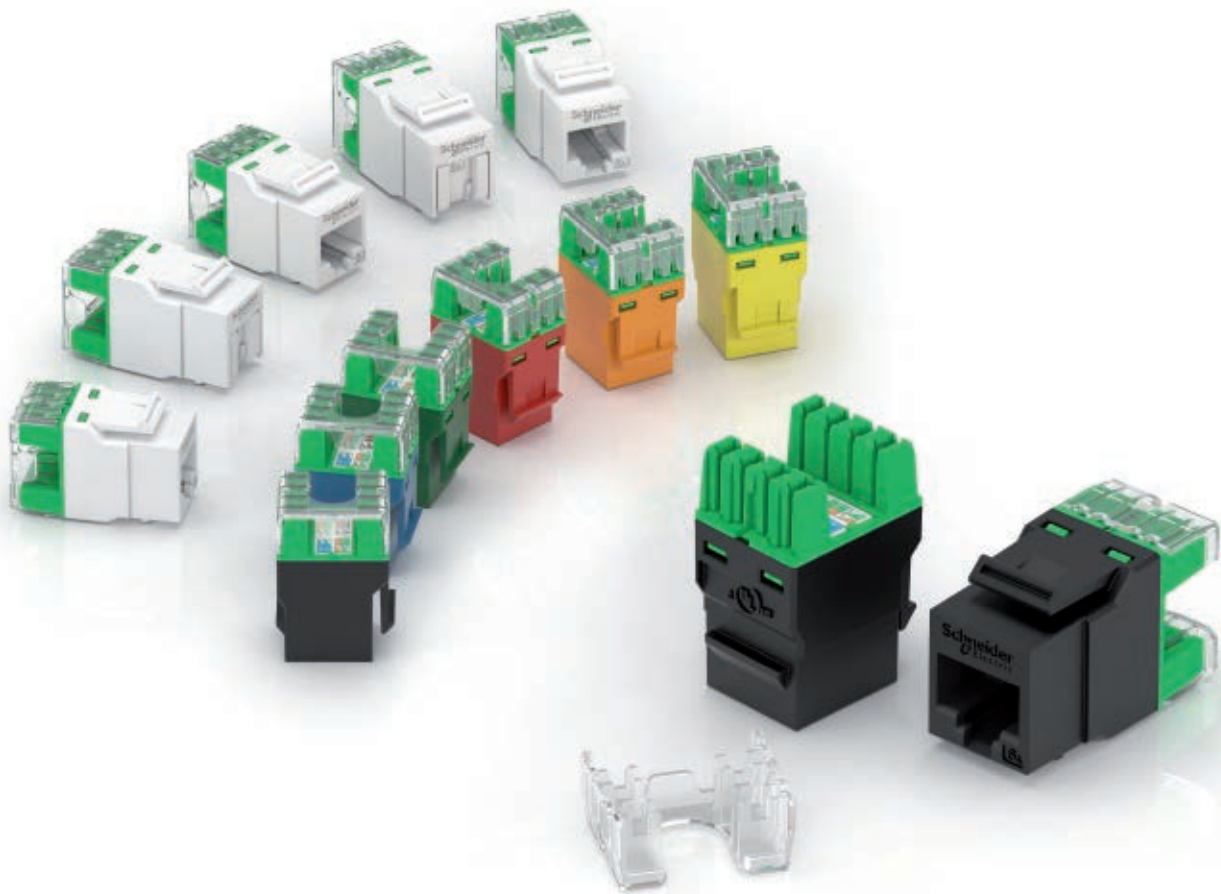
# Making professional OT/IT and network installations easy



P147328

# Actassi S-110 RJ45 connectors

PI48031 eps



## Actassi S-110 high-quality ranges

Actassi S-110 is the high-quality range of RJ45 punch-down connectors with Keystone footprint. The connectors are unshielded, based on 110 termination technology and can be connected with Actassi Quick Termination Tool or Actassi punch-down tool. Actassi S-110 range provides full compliance to the latest international standards ISO/IEC 11801 Ed3.0 and ANSI/TIA-568-C.2. It is also compliant to PoE++ (PoE 100 W) IEC 60512-99-002 and is supported by 3rd party laboratory certification.

# Actassi S-110 RJ45 benefits

Actassi S-110 is the high-quality range of RJ45 punch-down connectors with Keystone footprint. The connectors are unshielded, based on 110 termination technology and can be connected with Actassi Quick Termination Tool or Actassi punch-down tool. Actassi S-110 range provides full compliance to the latest international standards ISO/IEC 11801 Ed3.0 and ANSI/TIA-568-C.2 and is supported by Delta certification.

## U-shaped cable entry

Customer is able to do termination with cable entrance by lateral or axial access

## Easy termination

Same wire map for Cat 5e + Cat 6 + Cat 6<sub>A</sub> = less risk to make wire connection errors

## Keystone footprint

RJ45 jack is able to be integrated in Actassi faceplates and 19" patch panels

## Wires retention

Wires are maintained in the rear part of RJ45 during termination

## Transparent IDC cap

Clear and transparent IDC cap for faster visual inspection of wires after termination

## Easy identification of applications

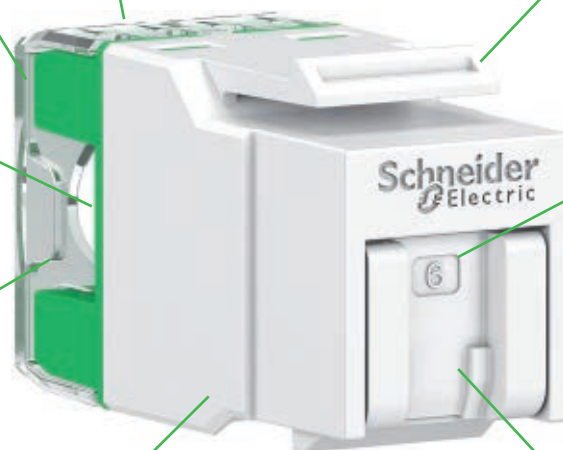
Available in several colours for easy and quick circuit/network identification and management in patch panels

## Visible category

With 3 different markings it's easy to know the category just by looking the front of the connector (5e = Cat 5e, 6 = Cat 6, 6A = Cat 6<sub>A</sub>)

## Integrated automatic shutter

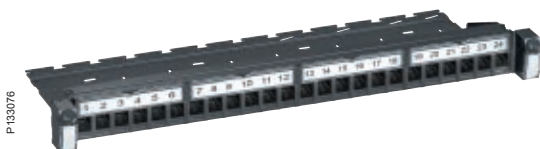
Patented automatic shutter to protect the RJ45 jack from dust and accidental insertion. Customer doesn't need to buy and install additional part to protect the RJ45 jack in 19" patch panel or in Wiring device faceplates



# Fixed panels – empty and equipped with the S-110 connectors

The Actassi S-110 product range offers Actassi panels where S-110 RJ45 connectors can be fitted. The panels have a Quick Fix function on both sides and they are equipped with 4 label holders and a metal tray cable manager.

For the specific need of Cat 6A unshielded system, a panel is available with an offset design to fit with specific requirements of S-110 Cat 6A unshielded connectors.



Equipped fixed panel for S-110 connectors (for all categories **except Cat 6<sub>A</sub> unshielded**)



Equipped fixed panel for S-110 connectors (delivered with S-110 Cat 6<sub>A</sub> unshielded connectors)



Empty fixed panel for S-110 connectors (for all categories **except Cat 6<sub>A</sub> unshielded**)



# Actassi S-110 RJ45 connectors

## Actassi S-110

### Industrial design

Our product design allows you to recognize the Schneider brand through the RJ45 jack aesthetic: logo, design and color. It's easy to associate it to Schneider Electric products and other ranges and is a proof of our willingness to provide you a full consistency in our offers.

### Practical eco-box

- Box of 24 connectors.
- Connectors delivered in individual, Plastic bag
- Cardboard package for easy recycling.



### Full compliance with ISO/IEC 11801 Ed3.0

To get your complete network installation classified you need to work with classified components.

That's why you should choose our solutions. We provide seamless end-to-end connectivity through safe, speedy and reliable network installations. We are constantly adjusting and updating our portfolio, and at the same time making sure that they are fully compatible with older and future solutions.

Cat 5e

Cat 6

Cat 6<sub>A</sub>



147696



P147693



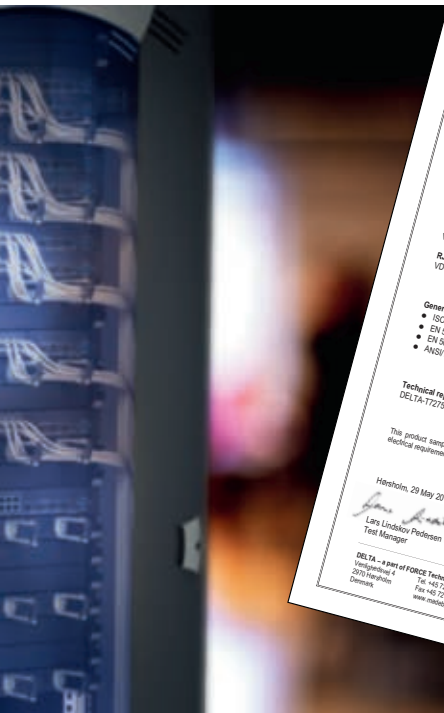
P147710



P147694



P147691



Every part in our Actassi range is certified to deliver what we claim they will. The Actassi S-110 UTP components are fully compliant with ISO/IEC 11801 Ed3.0 and also ISO 60512-099-001, so you can always count on an outstanding performance and reliability.

2010-227, 2010-228, 2010-229



P147730

More data available on the web. Scan and discover.

[www.schneider-electric.com/qr-actassi\\_s110\\_rj45\\_connector](http://www.schneider-electric.com/qr-actassi_s110_rj45_connector)

For scanning, download the free Unitag app on [unitag.io/app](http://unitag.io/app)

- Performance category: Cat 5e unshielded
- Material: PC-ABS plastic for UTP.
- Size: height 22 mm, width 16 mm, length 36 mm
- Applicable standards:
  - ISO/IEC 11801 Ed3.0
  - ANSI/TIA-568-C.2
  - IEC 60603-7-2 Cat 5e connecting hardware
  - UL Listed
- Keystone footprint
- Punch-down IDC termination
- Operational temperature range: -10°C to 60°C
- Can be terminated with Actassi punch down tool and with Actassi quick termination tool
- Delivered in individual bags with cabling instructions.

### S-110 Keystone unshielded Cat 5e

Description	Qty/pack	Ref. No
<b>Without shutter</b>		
Connector RJ45 keystone unshielded, black	1	<b>VDIB17365UBK</b>
Connector RJ45 keystone unshielded, white	1	<b>VDIB17365UWE</b>



P147877



P147896



More data available on the web. Scan and discover.

[www.schneider-electric.com/qr-actassi\\_s110\\_rj45\\_connector](http://www.schneider-electric.com/qr-actassi_s110_rj45_connector)

For scanning, download the free Unitag app on [unitag.io/app](http://unitag.io/app)

- Performance categories: Cat 6, unshielded
- Component certified by 3<sup>rd</sup> party laboratory
- Material: ABS plastic
- Size: height 22 mm, width 16 mm, length 36 mm
- Applicable standards:
  - ISO/IEC 11801 Ed3.0
  - ANSI/TIA-568-C.2
  - IEC 60603-7-4 Cat 6 connecting hardware
  - PoE++ (100 W) IEC 60512-099-002
  - UL listed
- Keystone footprint
- Punch-down IDC termination tool
- Patented shutter
- Available in various colours
- Operational temperature range: -10°C to 60°C
- Individual bag with cabling instructions
- Can be terminated with Actassi punch down tool and with Actassi quick termination tool
- Green, Red, Soft Grey, Yellow and Orange are available only as a special order item. Please consult Schneider Electric for details.

### S-110 Keystone unshielded Cat 6

Description	Qty/pack	Ref. No
<b>Without shutter</b>		
Connector RJ45, keystone unshielded black	1	VDIB17366UBK
Connector RJ45, keystone unshielded blue	1	VDIB17366UBU
Connector RJ45, keystone unshielded green	1	VDIB17366UGR
Connector RJ45, keystone unshielded red	1	VDIB17366URD
Connector RJ45, keystone unshielded soft grey	1	VDIB17366USG
Connector RJ45, keystone unshielded white	1	VDIB17366UWE
Connector RJ45, keystone unshielded yellow	1	VDIB17366UYL
Connector RJ45, keystone unshielded orange	1	VDIB17366UOR
<b>With shutter</b>		
Connector RJ45, keystone unshielded shutter black	1	VDIB17346UBK
Connector RJ45, keystone unshielded shutter blue	1	VDIB17346UBU
Connector RJ45, keystone unshielded shutter green	1	VDIB17346UGR
Connector RJ45, keystone unshielded shutter red	1	VDIB17346URD
Connector RJ45, keystone unshielded shutter soft grey	1	VDIB17346USG
Connector RJ45, keystone unshielded shutter white	1	VDIB17346UWE
Connector RJ45, keystone unshielded shutter yellow	1	VDIB17346UYL



# Connectors S-110

## Category 6A unshielded (Special order only)



More data available on the web. Scan and discover.

[www.schneider-electric.com/qr-actassi\\_s110\\_rj45\\_connector](http://www.schneider-electric.com/qr-actassi_s110_rj45_connector)

For scanning, download the free Unitag app on [unitag.io/app](http://unitag.io/app)

- Performance categories: Cat 6<sub>A</sub>, unshielded
- Component certified by 3<sup>rd</sup> party laboratory
- Material: ABS plastic
- Size: height 22 mm, width 16 mm, length 36 mm
- Applicable standards:
  - ISO/IEC 11801 Ed3.0
  - ANSI/TIA-568-C.2
  - IEC 60603-7-4-1 Cat 6<sub>A</sub> connecting hardware
  - PoE++ (100 W) IEC 60512-099-002
  - UL listed
- Keystone footprint
- Punch-down IDC termination tool
- Patented shutter
- Available in various colours
- Operational temperature range: -10°C to 60°C
- Individual bag with cabling instructions
- Can be terminated with Actassi punch down tool and with Actassi quick termination tool
- Green, Red, Soft Grey, Yellow and Orange are available only as a special order item. Please consult Schneider Electric for details.

### S-110 Keystone unshielded Cat 6<sub>A</sub>

Description	Qty/pack	Ref. No
<b>Without shutter</b>		
Connector RJ45, keystone unshielded black	1	VDIB1736XUBK
Connector RJ45, keystone unshielded blue	1	VDIB1736XUBU
Connector RJ45, keystone unshielded green	1	VDIB1736XUGR
Connector RJ45, keystone unshielded red	1	VDIB1736XURD
Connector RJ45, keystone unshielded soft grey	1	VDIB1736XUSG
Connector RJ45, keystone unshielded white	1	VDIB1736XUWE
Connector RJ45, keystone unshielded yellow	1	VDIB1736XUYL
<b>With shutter</b>		
Connector RJ45, keystone unshielded shutter black	1	VDIB1734XUBK
Connector RJ45, keystone unshielded shutter blue	1	VDIB1734XUBU
Connector RJ45, keystone unshielded shutter green	1	VDIB1734XUGR
Connector RJ45, keystone unshielded shutter red	1	VDIB1734XURD
Connector RJ45, keystone unshielded shutter soft grey	1	VDIB1734XUSG
Connector RJ45, keystone unshielded shutter white	1	VDIB1734XUWE
Connector RJ45, keystone unshielded shutter yellow	1	VDIB1734XUYL





# Connectors S-110

## Category 5e, Category 6, Category 6A, shielded (Special order only)

- Performance categories: Cat 5e, Cat 6 and Cat 6<sub>A</sub>, shielded
- Component certified by 3<sup>rd</sup> party laboratory
- Material: zamak
- Size: height 22 mm, width 16 mm, length 36 mm
- Applicable standards:
  - ISO/IEC 11801 Ed3.0
  - ANSI/TIA-568-C.2
  - IEC 60603-7-2 Cat 5e connecting hardware
  - IEC 60603-7-4 Cat 6 connecting hardware
  - IEC 60603-7-4-1 Cat 6<sub>A</sub> connecting hardware
  - POE+ (30 W) ISO 60512-099-001
  - UL listed
- Keystone footprint
- Operational temperature range: -10°C to 60°C
- Individual bag with cabling instructions.

### S-110 Keystone shielded Cat 5e

Description	Qty/pack	Ref. No
<b>Without shutter</b>		
Connector RJ45 keystone shielded	1	ACTRJSM5ENSS
Connector RJ45 keystone shielded, patch panel version 1		ACTRJSM5ENSSP



### S-110 Keystone shielded Cat 6

Description	Qty/pack	Ref. No
<b>Without shutter</b>		
Connector RJ45, keystone shielded	1	ACTRJSM6NSS
Connector RJ45, keystone shielded, patch panel version	1	ACTRJSM6NSSP



### S-110 Keystone shielded Cat 6 angle

Description	Qty/pack	Ref. No
<b>Without shutter</b>		
Connector RJ45, keystone shielded, angled	1	ACTRJSM6ANSS



### S-110 Keystone shielded Cat 6<sub>A</sub>

Description	Qty/pack	Ref. No
<b>Without shutter</b>		
Connector RJ45, keystone shielded,	1	ACTRJSM6ANSS
Connector RJ45, keystone shielded, patch panel version 1		ACTRJSM6ANSSP



### S-110 Keystone shielded Cat 6<sub>A</sub> angle

Description	Qty/pack	Ref. No
<b>Without shutter</b>		
Connector RJ45, keystone shielded, angled	1	ACTRJSM6ANSSP



# Connectors S-110

## Accessories

### Quick termination punchdown tool

(compatible with new unshielded S-110 Cat 5e, Cat 6 and Cat 6<sub>A</sub>)

- Fast and easy field installation tool with simple squeeze handle
- Handle lock design
- Replaceable cutting module design
- Save up termination time over 80 %
- Save up termination force needed to 70 %
- Termination of all wires at one single squeeze
- Ensure quality, stability and safety during termination
- Easy & handy carrying and storage.



[https://www.youtube.com/watch?v=3K7V\\_OJqAYE](https://www.youtube.com/watch?v=3K7V_OJqAYE)

For scanning, download the free Unitag app on [unitag.io/app](http://unitag.io/app)



Description	Qty/pack	Ref. No
Quick termination punchdown tool (modules VDIB2736CM included)	1	VDIB2736

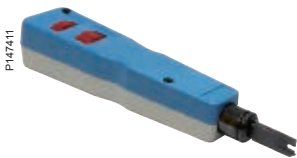
Cut modules for punchdown tool (1 for Cat 6 and 1 for Cat 6 <sub>A</sub> )	1	VDIB2736CM
--	---	------------

For specific angled jack panel only		
Quick termination punchdown tool angled (1 module ACTFSMODULE180 included)	1	ACTFSPUNCH110
110 cut module	1	ACTFSMODULE180



<https://www.youtube.com/watch?v=l9dxgnPSzsA>

For scanning, download the free Unitag app on [unitag.io/app](http://unitag.io/app)



### Standard tool (for S-110 unshielded tools for Cat 5e, 6 and 6<sub>A</sub>)

Description	Qty/pack	Ref. No
Punchdown tool (1 blade ACTTRJ45PDTB included)	1	ACTTRJ45PDT

Blade for standard punchdown tool ACTTRJ45PDT	1	ACTTRJ45PDTB
---	---	--------------

### Crimping Tool

- Simplifies twisted pair terminations by allowing the wires to be inserted and pass through the RJ45 modular plug
- Avoid 90 % of RJ45 termination issues
- Technician can easily verify the proper wiring order
- RoHS Compliant.

Description	Qty/pack	Ref. No
Crimping Tool	1	ACTTTLCP

P148032

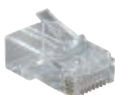


### Pass Through Plugs

- Reduces the distance between the wire twists and contacts to improve performance
- Minimum of 750 contact cycles
- Phosphor bronze with 50 μ gold plating
- RoHS Compliant.

Description	Qty/pack	Ref. No
Pass Through Plugs - Cat 5e	100	ACTPG5EPTU100
Pass Through Plugs - Cat 6	100	ACTPG6PTU100

P148036



### Tool-less RJ45 Plugs

- Termination time can be sped up by 30% due to the simplicity of termination mechanism
- No termination tool is required
- Accepts wider cable conductor range from 26 AWG up to 22 AWG solid and stranded cable
- Minimum of 750 contact cycles
- Phosphor bronze with 50 μ gold plating
- PoE+ compliant
- UL Listed.

Description	Qty/pack	Ref. No
Field-Term RJ45 Plug - Cat 6	1	ACTPG6TLU001

P148043



### Plenum Rated Patch Cords

- Plug-and-play solution. Reducing the installation time of MP-X controllers
- Stranded cable with high bending flexibility
- Unique serial number enables backtracking
- Component performances (ANSI/TIA-568-C.2)
- Plenum rated
- Schneider Green differentiates between structured cabling for BMS system vs IT.

Description	Qty/pack	Ref. No
Cat 5e Patch Cord UTP 30 ft CMP, green	1	ACTPC5EUBCP30AGR
Cat 5e Patch Cord UTP 50 ft CMP, green	1	ACTPC5EUBCP50AGR
Cat 5e Patch Cord UTP 70 ft CMP, green	1	ACTPC5EUBCP70AGR
Cat 5e Patch Cord UTP 90 ft CMP, green	1	ACTPC5EUBCP90AGR
Cat 6 Patch Cord UTP 30 ft CMP, green	1	ACTPC6UBCP30AGR
Cat 6 Patch Cord UTP 50 ft CMP, green	1	ACTPC6UBCP50AGR
Cat 6 Patch Cord UTP 70 ft CMP, green	1	ACTPC6UBCP70AGR
Cat 6 Patch Cord UTP 90 ft CMP, green	1	ACTPC6UBCP90AGR

P147744



# Actassi copper cables

## Some important advantages

### Certificates

All LAN cables from Category 6 are certified at a component level by the independent third-party laboratory Delta. Certificates are regularly updated to be compliant to the latest and highest international standards.



## Performances

Frequency (MHz)	250		500		
Attenuation (dB)*	32.8	33	45.3	45.3	45.3
NEXT (dB)*	38.3	42.3	33.8	33.8	54.8
ACR-F (dB)*	19.8	23	13.8	13.8	24
Propagation speed (%c)	68	68	70	70	82

\* Guaranteed characteristics given for 328.08 ft (100 meters) at maximum frequencies: 250 MHz for category 6, 500 MHz for category 6A.

# Cables

## Copper LAN cables - Category 5e

### Category 5e cables

The Actassi Category 5e 4-pair cable consists of 24 AWG solid-copper conductors insulated with high-density polyethylene. The insulated conductors are tightly twisted into pairs and covered with PVC material.

The cable provides excellent high-speed transmission, is certified to 100 MHz. This product is UL listed with a CMR or CMP fire rating.

### Product features

- Compliant with enhanced Category 5 standard.

### Cat 5e U/UTP

#### Specifications

- 24 AWG. 4 pairs.

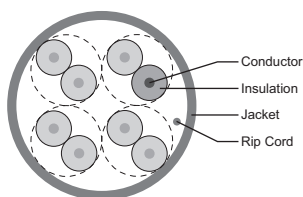
#### Performances

- Complies with TIA/EIA-568-C.2 Category 5e and ISO/IEC 11801 Class D standards.



2D4H5FPV3B\_Cat5e\_UTP\_PVC\_green

ACT4P5EUCP1ARXGR



Cat5e UTP Cable\_dwg

NEXT	Guaranteed	Standard IEC
100 MHz	37.3 dB	≥ 35.3 dB

#### Use

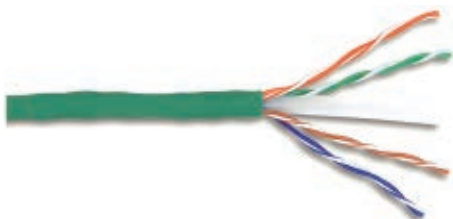
- Applications such as 155 Mb/s ATM, 622 Mb/s ATM and IEEE 802.3 1000 Base-T (Gigabit ethernet) standards, using parallel transmission technology.

Type	Weight	Diameter	Sheath	Cond/Length	Ref. No
4 pair cable	0.020 lb/ft (30 kg/km)	0.20 in (5.3 mm)	PVC - CMR	1000 ft (305 m)	<b>ACT4P5EUCR1ARXGR</b>
		0.189 in (4.8 mm)	CMP	1000 ft (305 m)	<b>ACT4P5EUCP1ARXGR</b>

# Cables

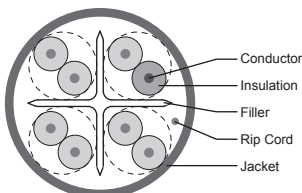
## Copper LAN cables - Category 6

2D4F8IPV3B\_Cat6\_UTP\_green



ACT4P6UCR1ARXGR

Cat6 UTP Cable

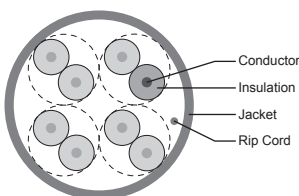


Cat6\_UTP\_CMP\_green



ACT4P6UCP1ARXGR

Cat6 UTP CableC2



### Category 6 cables

The Category 6 cable consists of 4 pairs of solid insulated copper 23 AWG and is UL listed with a CMR or CMP fire rating.

The cable provides a significant margin above the minimum Category 6 near end crosstalk NEXT requirement of ANSI/TIA/EIA-568 and ISO/IEC 11801.

#### Cat 6 U/UTP - CMR

##### Specifications

- 23 AWG. 4 pairs. Centre filler to maintain pair twisting and optimum NEXT and RL performance.

##### Performances

- Complies with TIA/EIA-568-C.2 Category 6 and ISO/IEC 11801 Class E standards.

NEXT	Guaranteed	Standard IEC
250 MHz	40.3 dB	≥ 39.3 dB

##### Use

- In horizontal cabling situations.
- High-bandwidth applications, including the IEEE 802.3AB 1000 Base-T (Gigabit ethernet), TIA/EIA 1000 Base-TX, 1.2 Gb/s ATM and any future applications designed for Category 6/Class E cabling, broadband video.

Type	Weight	Diameter	Sheath	Cond/Length	Ref. No
4 pair cable green	0.028 lb/ft (43 kg/km)	0.236 in (6 mm)	PVC - CMR	1000 ft (305 m)	<b>ACT4P6UCR1ARXGR</b>
4 pair cable blue	0.028 lb/ft (43 kg/km)	0.236 in (6 mm)	PVC - CMR	1000 ft (305 m)	<b>ACT4P6UCR1ARXBU</b>

#### Cat 6 U/UTP - CMP

##### Specifications

- 23 AWG. 4 twisted pairs. Optimised twisted pair cable makes better NEXT and RL performance.

##### Performances

- Complies with TIA/EIA-568-C.2 Category 6 and ISO/IEC 11801 Class E standards.

NEXT	Guaranteed	Standard IEC
250 MHz	40.3 dB	≥ 38.3 dB

##### Use

- In horizontal cabling situations.
- High-bandwidth applications, including the IEEE 802.3AB 1000 Base-T (Gigabit ethernet), TIA/EIA 1000 Base-TX, 1.2 Gb/s ATM and any future applications designed for Category 6/Class E cabling, broadband video.

Type	Weight	Diameter	Sheath	Cond/Length	Ref. No
4 pair cable green	0.023 lb/ft (35 kg/km)	0.198 in (5 mm)	CMP	1000 ft (305 m)	<b>ACT4P6UCP1ARXGR</b>
4 pair cable blue	0.023 lb/ft (35 kg/km)	0.198 in (5 mm)	CMP	1000 ft (305 m)	<b>ACT4P6UCP1ARXBU</b>

# Cables

## Copper LAN cables Category 6A

The Cat 6<sub>A</sub> cable consists of 4 pairs of solid insulated copper 23 AWG. The cable provides a significant margin above the Category 6<sub>A</sub> Alien Crosstalk (ANEXT) requirement of TIA/EIA 568-C.2 Category 6<sub>A</sub> and ISO/IEC 11801 Class Ea.

### Cat 6<sub>A</sub> U/UTP

#### Specifications

- 23 AWG. 4 pairs. Centre filler to maintain pair twisting.

#### Performances

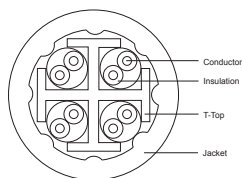
- Complies with TIA/EIA-568-C.2 Category 6<sub>A</sub> and ISO/IEC 11801 Class Ea standards.

P71.90170\_green



ACTTG4P6AUCP1ARGR

ACTTG4P6AUCP1ARGR



NEXT	Guaranteed	Standard IEC
500 MHz	35.8 dB	≥ 33.8 dB

#### Use

- In horizontal cabling situations
- Support 10G Base-T, 1000 Base-T and 1000 Base-TX LANs and broadband video applications.

Type	Weight	Diameter	Sheath	Cond/Length	Ref. No
4 pair cable green	0.053 lb/ft (79 kg/km)	0.325 in (8.1 mm)	PVC - CMR	1000 ft (305 m)	ACTTG4P6AUCR1ARGR
		0.33 in (8.4 mm)	CMP	1000 ft (305 m)	ACTTG4P6AUCP1ARGR
4 pair cable blue	0.053 lb/ft (79 kg/km)	0.325 in (8.1 mm)	PVC - CMR	1000 ft (305 m)	ACTTG4P6AUCR1ARBU
		0.33 in (8.4 mm)	CMP	1000 ft (305 m)	ACTTG4P6AUCP1ARBU

**Patch cord U/UTP Cat 6**

**Specifications**

- 300 MHz, outer sheath CM - PVC
- Wiring sequence: T568B
- 100 % performance tested and wired T568B.

Type	Colour of sheath	Length	Ref. No
4 pairs	Blue	1 ft	ACTPC6UBCM01ABU
		3 ft	ACTPC6UBCM03ABU
		6 ft	ACTPC6UBCM06ABU
		9 ft	ACTPC6UBCM09ABU
		15 ft	ACTPC6UBCM15ABU
4 pairs	Red	1 ft	ACTPC6UBCM01ARD
		3 ft	ACTPC6UBCM03ARD
		6 ft	ACTPC6UBCM06ARD
		9 ft	ACTPC6UBCM09ARD
		15 ft	ACTPC6UBCM15ARD

Cat6\_UTP\_PatchCord



ACTPC6UBCMxxABU

Cat6\_UTP\_PatchCord\_red



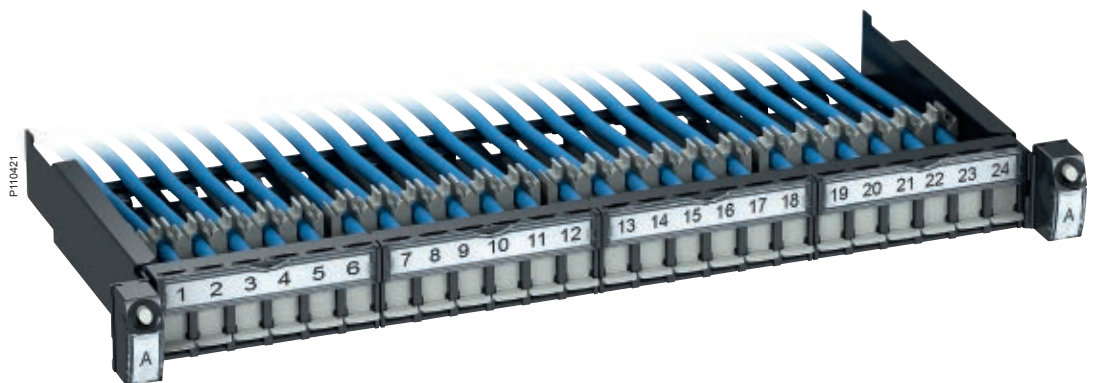
ACTPC6UBCMxxARD



# Panel range with S-110

## Actassi data panels

The data panels contain a front configuration for 24 RJ45 connectors. All panels have the smart Quick Fix function. They are also available pre-equipped with connectors, shutters, label holders and a rear cable organizer. We try to make your life as easy as possible.



### Sliding helps installation

Maintenance and extensions are smoothly performed with the help of the Quick Fix sliding function.

### Actassi S-110

The connectors are a one-piece design for very fast and reliable wiring. Actassi S-110 exceeds component hardware certification for standards like ISO/IEC 11801 Ed3.0 for Cat 6<sub>A</sub>, ensuring optimized network performance.



### Cable management

Apart from the systems with colour codes, labels and numbers, the technical setup at the rear of the panel is designed to enhance order. Cables of various diameters are easily mounted and kept in place in specified slots.



### Rear position numbers

Keeping track of each RJ45 could sometimes be very hard. Actassi is changing all of that! The cable numbers at the rear correspond to those at the front, simplifying installation and maintenance from both sides of the rack.



### Clear front marking

Each panel plate has an openable label holder. Print your own labels or use the included versions with pre-printed port numbers. Each shutter can also be colour coded for quick identification in both open and closed positions.

### Equipped fixed panel with S-110 connectors, Cat 5e and Cat 6 UTP, 1U 24 ports,

- Equipped fixed 19" copper panel (with connectors, pre-mounted)
- 1U height
- 24 RJ45 ports
- 1 Quick Fix function on both sides to allow a simple, quick fixing position
- Panels equipped with 4 label holders and a metal tray cable manager
- Metal sheet: thickness 0.047 in (1.2 mm). Dark grey RAL 7016
- Plastic parts in PA66 GF20 or PA6
- Simple clicking connectors for mounting and dismantling.

Evolution version: pre-equipped with 24 RJ45 S-110 keystone connectors (pre-mounted) and a metal tray cable manager

Description	Ref. No
<b>Category 5e</b> Equipped panel 1U with 24 RJ45 S-110 connectors keystone Cat 5e UTP	<b>VDIG113241U50</b>
<b>Category 6</b> Equipped panel 1U with 24 RJ45 S-110 connectors keystone Cat 6 UTP	<b>VDIG113241U60</b>



### Empty fixed panel for S-110 connectors (compatible with Cat 5e and Cat 6 not compatible for Cat 6A)

- Empty fixed 19" copper panel (without connectors)
- 1U / 2U heights
- 24 / 48 RJ45 ports
- 1 Quick Fix function on both sides to allow a simple, quick fixing position
- Panels equipped with 4 label holders and a metal tray cable manager
- Metal sheet: thickness 1.2 mm. Dark grey RAL 7016
- Plastic parts in PA66 GF20 or PA6
- Simple clicking connectors for mounting.

Evolution version: pre-equipped with 4 label holders and a metal tray cable manager

Description	Ref. No
Empty panel 1U for S-110 connectors keystone UTP 24 ports	<b>VDIG413241U</b>
Empty panel 2U for S-110 connectors keystone UTP 48 ports	<b>VDIG413482U</b>



VDIG413241U



VDIG413482U

### Equipped fixed panel with S-110 connectors, Cat 6A UTP, 1U 24 ports

- Equipped fixed 19" copper panel (with connectors, pre-mounted)
- Equipped with S-110 Cat 6A unshielded connectors, black colour, without shutters
- 1U height
- 24 RJ45 ports
- Panels equipped with 2 label holders and a cable manager
- The cable manager can rotate and be removed to ease the accessibility.

Description	Ref. No
<b>Category 6A</b> Equipped panel 1U with 24 RJ45 S-110 connectors keystone Cat 6A UTP, non-shutter	<b>ACTPP6ATGU24NSS</b>



# Accessories and guiding panels

The Actassi system also includes a range of panels and smart accessories for improved cable management. The innovative patchcords guiding panel is equipped with four openable rings, managing up to 48 cords.



## Brush and blank panel

Brush guiding panel. Blank panel instead of an empty gap in the rack.



## Guiding panels for patch cords

The 1U panel manages 24 cords, and 2U panel 48 cords. Easily opened but still safe, since a clever device prevents cords from falling out. Also possible to pull out only one cord if needed.



## Side rings for rack 31.5 x 31.5 in (800 x 800 mm)

Rings for vertical management of up to 48 patch cords, attached to each side of the guiding panel (or any panel with Quick Fix). Available for 1U and 2U.



## Vertical rings for rack 23.6 x 23.6 in (600 x 600 mm)

For the 23.6 x 23.6 in racks, use the smaller tie up devices to keep your installations in neat order.



# Cable management and accessories

## S-110



### Patch cord guiding panels

- Patch cord guiding panel
- 1U, 2U
- 1 Quick Fix function on both sides to allow a simple, quick fixing position
- 4 openable rings
- Patch cord holder integrated inside the ring for opened position.

Description	Ref. No
Patch cord guiding panel 1U with 4 openable rings	<b>VDIG188141</b>
Patch cord guiding panel 2U with 4 openable rings	<b>VDIG188142</b>



### Brush guiding panel

- Patch cord guiding panel
- 1U
- 1 Quick Fix function on both sides to allow a simple, quick fixing position.

Description	Ref. No
Patch cord brush guiding panel 1U	<b>VDIG188201</b>



### Side rings for vertical management

- Rings for vertical management of patch cords, in horizontal and vertical position
- Openable
- For racks 31.5 x 31.5 in (800 x 800 mm) and 23.6 x 23.6 in (600 x 600 mm)
- Can be fixed on each side of any Quick Fix system panel or guiding panel
- Large capacity up to 48 cords.

Description	Ref. No
Horizontal ring for vertical management of patch cords, 1U, for rack 31.5 x 31.5 in (800 x 800 mm)	<b>VDIM189112</b>
Vertical ring for vertical management of patch cords, 2U, for rack 31.5 x 31.5 in (800 x 800 mm)	<b>VDIM189412</b>
Ring for vertical management of patch cords, using self-grip strip, for rack 23.6 x 23.6 in (600 x 600 mm)	<b>VDIM189111</b>



### Rack shield kit

Description	Ref. No
Rack shield kit, pack of 10 pcs	<b>VDIM48E011</b>



### Others

Description	Ref. No
Rack panel mounting accessory	<b>VDIM18W001</b>

## A

ACT4P5EUCP1ARXGR  
ACT4P5EUCR1ARXGR  
ACT4P6UCP1ARXBU  
ACT4P6UCP1ARXGR  
ACT4P6UCR1ARXBU  
ACT4P6UCR1ARXGR  
ACTFSMODULE180  
ACTFSPUNCH110  
ACTPC5EUBCP30AGR  
ACTPC5EUBCP50AGR  
ACTPC5EUBCP70AGR  
ACTPC5EUBCP90AGR  
ACTPC6UBCM01ABU  
ACTPC6UBCM01ARD  
ACTPC6UBCM03ABU  
ACTPC6UBCM03ARD  
ACTPC6UBCM06ABU  
ACTPC6UBCM06ARD  
ACTPC6UBCM09ABU  
ACTPC6UBCM09ARD  
ACTPC6UBCM15ABU  
ACTPC6UBCM15ARD  
ACTPC6UBCP30AGR  
ACTPC6UBCP50AGR  
ACTPC6UBCP70AGR  
ACTPC6UBCP90AGR  
ACTPG5EPTU100  
ACTPG6PTU100  
ACTPG6TLU001  
ACTPP6ATGU24NSS  
ACTRJSM5ENSS  
ACTRJSM5ENSSP  
ACTRJSM6NSS  
ACTRJSM6NSSP  
ACTRJSM6ANSSP  
ACTRJSM6NSS  
ACTRJSMG6ANSS  
ACTRJSMG6ANSSP  
ACTTG4P6AUCP1ARGR  
ACTTG4P6AUCR1ARBU  
ACTTG4P6AUCR1ARGR  
ACTTRJ45PDT  
ACTTRJ45PDTB  
ACTTTLCP

## V

21 VDIB1734XUBK 16  
21 VDIB1734XUBU 16  
22 VDIB1734XUGR 16  
22 VDIB1734XURD 16  
22 VDIB1734XUSG 16  
22 VDIB1734XUWE 16  
18 VDIB1734XUYL 16  
18 VDIB1736XUBK 16  
19 VDIB1736XUBU 16  
19 VDIB1736XUGR 16  
19 VDIB1736XURD 16  
19 VDIB1736XUSG 16  
24 VDIB1736XUWE 16  
24 VDIB1736XUYL 16  
24 VDIB2736 18  
24 VDIB2736CM 18  
24 VDIB17346UBK 15  
24 VDIB17346UBU 15  
24 VDIB17346UGR 15  
24 VDIB17346URD 15  
24 VDIB17346USG 15  
24 VDIB17346UWE 15  
19 VDIB17346UYL 15  
19 VDIB17365UBK 14  
19 VDIB17365UWE 14  
19 VDIB17366UBK 15  
19 VDIB17366UBU 15  
19 VDIB17366UGR 15  
19 VDIB17366UOR 15  
26 VDIB17366URD 15  
17 VDIB17366USG 15  
17 VDIB17366UWE 15  
17 VDIB17366UYL 15  
17 VDIG113241U50 26  
17 VDIG113241U60 26  
17 VDIG188141 28  
17 VDIG188142 28  
17 VDIG188201 28  
23 VDIG413241U 26  
23 VDIG413482U 26  
23 VDIM18W001 28  
18 VDIM48E011 28  
18 VDIM189111 28  
19 VDIM189112 28  
VDIM189412 28





Life Is On



**Schneider Electric Industries SAS**

35, rue Joseph Monier  
CS 30323  
92506 Rueil Malmaison Cedex  
France

RCS Nanterre 954 503 439  
Capital social 896 313 776 €  
[www.se.com](http://www.se.com)

06-2019  
LSB03160EN

© 2019 - Schneider Electric. All Rights Reserved.  
All trademarks are owned by Schneider Electric Industries SAS or its affiliated companies.

This document has been  
printed on recycled paper

