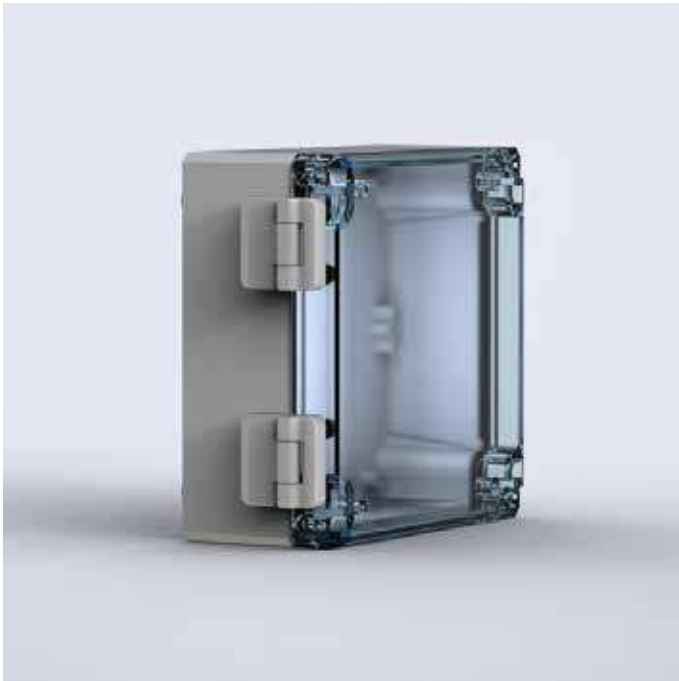


# DSHI1E

Hinges



The cover can be opened quickly, and the risk of loosing it becomes non-existent when using hinges on terminal boxes.

---

Item no.	DSHI1E
----------	--------

---

**Description:** Using this accessory the cover can be hinged. Machining is required.

**Material:** Polycarbonate.

**Finish:** RAL 7035.

**Pack quantity:** Set of 2 hinges with mounting accessories.