



IP 66 | TYPE 4X, 12, 13 | IK 10 (single door); IP 55 | TYPE



This stainless steel combinable console system, MPCS, has a IP 55/56 protection degree. It includes three interchangeable sections, top, desk and bottom. The system is very flexible and the various possible combinations can meet many design requirements. The ergonomic design of the top and desk units allows for easy installation and access to HMI-equipment, plus increases the mounting space available. This console can be installed in virtually any environment, grade dependent.

**Material:** AISI 304 pre-grained stainless steel / AISI 316L (on request). Body and door: 2 mm. Rear panel: 1.5 mm. Bottom plates: 1.5 mm. Mounting plate: 2.5 mm galvanized steel.

**Body:** Folded and seam welded. Console construction includes a base that provides a distance between the floor and the lower part of the door/s, acting as an integrated plinth.

**Doors and panels:** Single folded surface mounted with hinges, allowing left and right-hand opening to base door. Top section and desk panels held open by self engage/self release mechanical panel stays. Concealed hinges allowing 90° opening on the desk. Double doors on 1200 mm and 1600 mm wide base units.

**Mounting plate:** Standard in base unit. Fixed by fixing brackets on C rail, top and bottom for depth adjustment. Optional in desk and top section units.

**Lock:** Double-bit 3 mm locks for top section and desk unit. For base, two double-bit 3 mm locks. Other options available. See wall mounting section.

**Cable access:** Bottom opening in base unit for cable access. Bottom plates for cable glanding supplied as standard.

**Earthing:** M8 threaded studs on bodies, doors and rear panels.

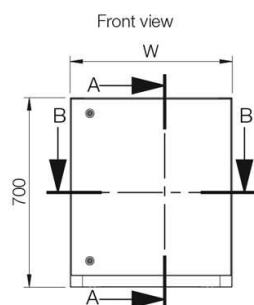
**Finish:** 400 pre-grained stainless steel.

**Protection:** Single door: IP 66 | TYPE 4X, 12, 13 | IK 10. Double door: IP 55 | TYPE 12, 13 | IK 10.

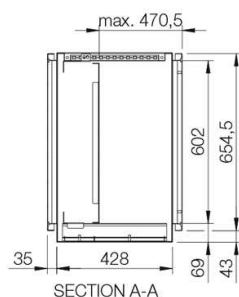
**Delivery:** The base unit is provided with a mounting plate as standard. Desk and top section units have mounting plates provided as accessories. All top and base apertures can be closed by choosing the appropriate accessory plate. Suitable nuts and washers for the various earthing studs are provided.

Base unit with mounting plate

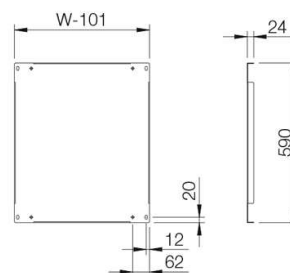
Single door



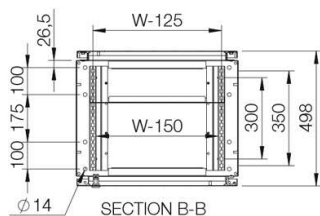
Sectional side view



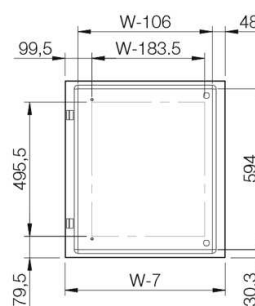
Mounting plate



Sectional top view

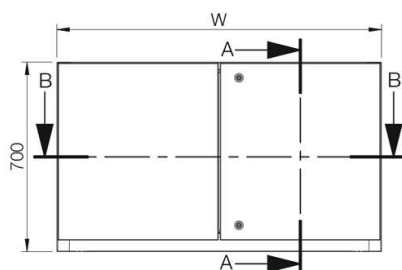


Inside door view

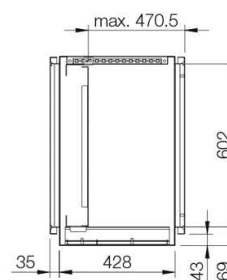


Double door

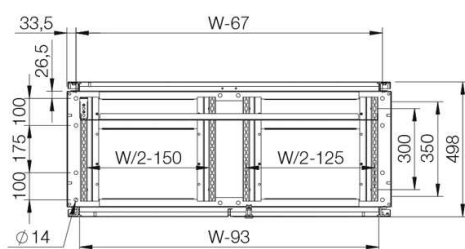
Front view



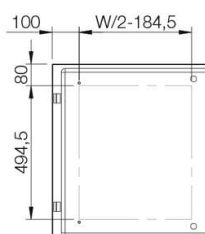
Sectional side view



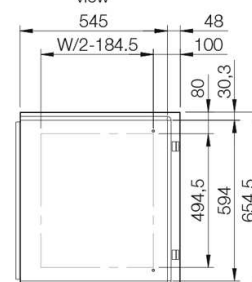
Sectional top view



Inside right door view



Inside left door view



## Top section units | Stainless steel

H	W	D	Item no.
500	600	494	MPCS061
500	600	494	MPCS061-316
500	800	494	MPCS081
500	800	494	MPCS081-316
500	1000	494	MPCS101
500	1000	494	MPCS101-316
500	1200	494	MPCS121
500	1200	494	MPCS121-316
500	1600	494	MPCS161
500	1600	494	MPCS161-316

## Desk units | Stainless steel

H	W	D	Item no.
250	600	985	MPCS062
250	600	985	MPCS062-316
250	800	985	MPCS082
250	800	985	MPCS082-316
250	1000	985	MPCS102
250	1000	985	MPCS102-316
250	1200	985	MPCS122
250	1200	985	MPCS122-316
250	1600	985	MPCS162
250	1600	985	MPCS162-316

## Base units with mounting plate | Stainless steel

H	W	D	h	w	d	Item no.
700	600	500	590	499	470.5	MPCS063
700	600	500	590	499	470.5	MPCS063-316
700	800	500	590	699	470.5	MPCS083
700	800	500	590	699	470.5	MPCS083-316
700	1000	500	590	899	470.5	MPCS103
700	1000	500	590	899	470.5	MPCS103-316
700	1200	500	590	1099	470.5	MPCS123
700	1200	500	590	1099	470.5	MPCS123-316
700	1600	500	590	1499	470.5	MPCS163
700	1600	500	590	1499	470.5	MPCS163-316

Note: Only 1200 mm and 1600 mm wide consoles have double door. \* On request.

# MPCS

Console system, stainless steel