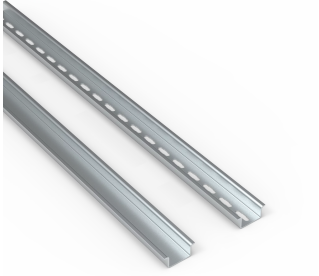


## DIN-RAIL MET GATEN, 2000

### CATALOGUSNUMMER

## PP0735H



Een DIN-rail die op maat kan worden gesneden. Deze vergemakkelijkt de aanschaf en installatie.

### KENMERKEN

Omschrijving: Overeenkomstig EN 60715.

Materiaal: Gegalvaniseerd plaatstaal.

Verpakkingseenheid: 15 x 2 m.

The DIN rails are supplied in lengths of 2 metres allowing customers to cut them to size in order to install modular components

Modular components can be easily installed in a fast way onto the enclosure's mounting plate reducing the required mounting time

With holes: PP0515H, PP0735H, PP1532H, PP1535H; Without holes: PP0735, PP1532, PP1535

Omega type: PP0515H, PP0735, PP0735H, PP1535, PP1535H; G type: PP1532, PP1532H

Hole pattern 18 x 5.2 mm: PP0515H, PP0735H, PP1532H, PP1535H

### PRODUCTKENMERKEN

Hoogte: 7.5 mm

Breedte: 35 mm

Materiaal: Steel

Finish: Galvanized

Kleur: Unpainted



Our powerful portfolio of brands:  
**nVent.com CADDY ERICO HOFFMAN RAYCHEM SCHROFF**  
**TRACER**