

PRODUCT DATASHEET

HTN 75/230...240 I

HALOTRONIC®-COMPACT – HTM, HTN | Electronic transformers for low-voltage halogen lamps



Areas of application

- Effect and accent lighting
- Living rooms
- Object lighting
- Conference rooms
- Restaurants
- Recessed and surface-mounted furniture luminaires
- Shop lighting
- Event rooms

Product benefits

- Very low power loss thanks to high efficacy
- Strain relief suitable for different cable types (HTM)
- Suitable for space-critical installation thanks to compact functional design
- Extremely compact transformer for highly space-critical installation conditions (HTN)
- Protective operation throughout the entire partial-load range for long lamp life

Product features

- Line frequency: 50...60 Hz
- RI suppression: to EN 55015 (A1: 2007)/CISPR 15, EN 55022
- Line harmonics according to EN 61000-3-2
- Immunity according to EN 61547
- Safety: to EN 61347
- Short-circuit protection, overload protection, overtemperature protection: electronically reversible
- Electrical isolation between the primary side and the secondary side
- Dimmable on the leading edge (without HTN) and trailing edge

TECHNICAL DATA

Electrical data

| | |
|--|-------------------------------|
| Nominal wattage | 79.00 W |
| Nominal voltage | 230...240 V |
| Nominal output voltage | 11.5 V / 11.7 V ¹⁾ |
| Input voltage range | 230...240 V |
| Input voltage AC | 207...254 V |
| Inrush current | 0.37 A ²⁾ |
| Mains frequency | 50/60 Hz ³⁾ |
| Power factor λ | 0.95 ⁴⁾ |
| ECG efficiency | 95 % ⁵⁾ |
| Device power loss | 4 W ²⁾ |
| Max. ECG no. on circuit breaker 10 A (B) | 37 |
| Max. ECG no. on circuit breaker 16 A (B) | 59 |
| Operating frequency | 50 kHz |

1) 75 W / 20 W

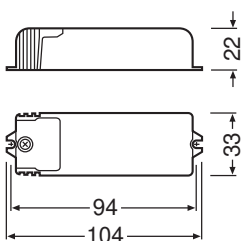
2) Maximum

3) Approximately

4) Minimum

5) At full load

Dimensions & Weight



| | |
|-------------------------------------|------------------------------|
| Length | 104.00 mm |
| Mounting hole spacing, length | 98,0 mm |
| Width | 33.00 mm |
| Height | 22.00 mm |
| Cable cross-section, input side | 1.5 mm ² |
| Cable cross-section, output side | 1.5 mm ² |
| Wire preparation length, input side | 10 mm / 6,0 mm ¹⁾ |

| | |
|--------------------------------------|------------------------------|
| Wire preparation length, output side | 10 mm / 6,0 mm ¹⁾ |
| Product weight | 68.00 g |

¹⁾ Cable sheath / Wire

Colors & materials

| | |
|-----------------|---------|
| Product color | Grey |
| Casing material | Plastic |
| Body material | Plastic |

Temperatures & operating conditions

| | |
|--|------------------------|
| Ambient temperature range | 0...+50 °C |
| Maximum temperature at tc test point | 85 °C |
| Max.housing temperature in case of fault | 110 °C |
| Permitted rel. humidity during operation | 5...85 % ¹⁾ |

¹⁾ Maximum 56 days/year at 85 %

Additional product data

| | |
|--------------|----|
| Encapsulated | No |
|--------------|----|

Capabilities

| | |
|--|----------------------|
| Dimmable | Yes |
| Dimming range | 0...100 % |
| Overheating protection | Automatic reversible |
| Overload protection | Automatic reversible |
| No-load proof | Yes |
| Short-circuit protection | Automatic reversible |
| Max. cable length to lamp/LED module | 2,0 m |
| Suitable for fixtures with prot. class | II |
| Type of connection, output side | Screw terminal |





Certificates & Standards

| | |
|---------------------------|---|
| Approval marks – approval | VDE / VDE-EMC / E1 approval / EAC |
| Standards | Acc. to DIN VDE 0875/CISPR 15/EN 55015 / Acc. to EN 61547 / Acc. to EN 61000-3-2 / Acc. to EN 61047 / Acc. to EN 61347 / Acc. to EN 55015 |
| Protection class | II |
| Type of protection | IP20 |

LOGISTICAL DATA

| | |
|------------------------------|--------------|
| Temperature range at storage | -40...+85 °C |
|------------------------------|--------------|

DOWNLOAD DATA

| Documents and certificates | |
|--|-------------------------------|
|  | User instruction |
|  | Declarations Of Conformity CE |
|  | Certificates |
| CAD/BIM files | |
|  | CAD data 3D PDF |

LOGISTICAL DATA

| Product code | Packaging unit (Pieces/Unit) | Dimensions (length x width x height) | Gross weight | Volume |
|---------------|------------------------------|--------------------------------------|--------------|----------------------|
| 4008321073037 | Unpacked 1 | | 70.00 g | |
| 4008321073044 | Shipping box 20 | 235 mm x 75 mm x 179 mm | 1692.00 g | 3.15 dm ³ |

The mentioned product code describes the smallest quantity unit which can be ordered. One shipping unit can contain one or more single products. When placing an order, for the quantity please enter single or multiples of a shipping unit.

DISCLAIMER

Subject to change without notice. Errors and omission excepted. Always make sure to use the most recent release.