

# Product End of Life Instructions

Harmony IIoT Core Box HMIBSC

Harmony Industrial PC





## Potential disassembly risks

The Circularity profile provides information about preparation for re-use and treatment. It identifies the relevant EEE components and materials as well as their location. Safety instructions for product dismantling and depollution are provided into the User manual or maintenance guide.

### ⚠ WARNING

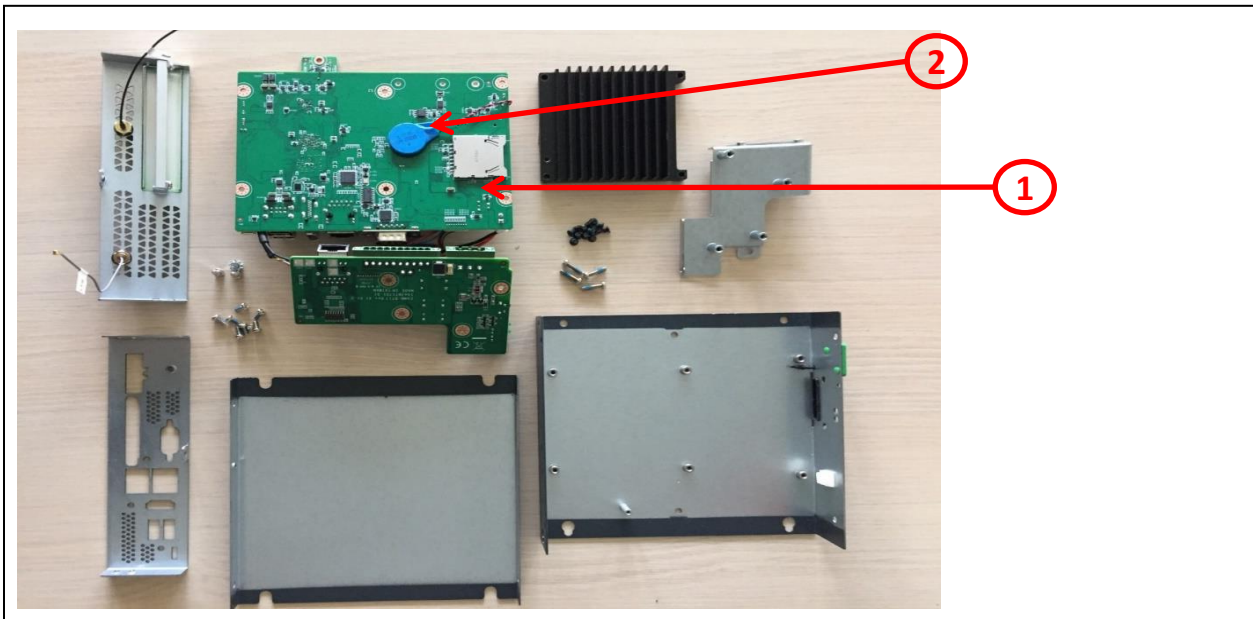
#### HAZARD OF ARC FLASH OR FIRE

- Disconnect battery terminals before disassembly
- Avoid any electrical connection between the terminals

**Failure to follow these instructions can result in death or serious injury.**



## End of Life Instructions



Recommendation	Number on drawing	Component / Material	Weight (in g)	Comment
To be depolluted	1	Electronic Board (Communication) > 10cm <sup>2</sup>	167.5	PCBA
Potential hazards	2	Batteries	1.2	
Other			831.3	



## Product description

Manufacturer identification	Schneider Electric Industries SAS
Brand name	Schneider Electric
Product function	IIoT Core Box HMIBSC are designed to operate in an industrial environment
Product reference	HMIBSCEA53D1L0T
Additional similar product references	HMIBMOMA5DDF10L HMIBMOMA5DD1E01 HMIBMOMA5DD1101 HMIBMIEA5DD110L HMIBMIEA5DD1101
Total representative product mass	1000 g
Representative product dimensions	150mm x 157mm x 46mm
Accessories	No
Date of information release	2023/12/19



## Additional information

Legal information	This product family is in the scope of European Union directive 2012/19/EU on Waste Electrical and Electronic Equipment (WEEE). The product family must be disposed according to the legislation of the country. This document is intended for use by end of life recyclers or treatment facilities. It provides the basic information to assure an appropriate end of life treatment for the components and materials of the product.	
Recyclability potential	<b>77%</b>	Recyclability rate has been calculated based on REEECY'LAB tool developed by Ecosystem, for components/materials not covered by the tool, data from the "ECO' DEEE recyclability and recoverability calculation method" was taken. If no data was found a conservative assumption was used (0% recyclability).

Schneider Electric Industries SAS

Country Customer Care Center  
<http://www.se.com/contact>

35, rue Joseph Monier  
 CS 30323  
 F- 92500 Rueil Malmaison Cedex  
 RCS Nanterre 954 503 439  
 Capital social 928 298 512 €

[www.se.com](http://www.se.com)

ENVEOLI2003020\_V1

Published by Schneider Electric

© 2023 - Schneider Electric – All rights reserved

2023/12/19