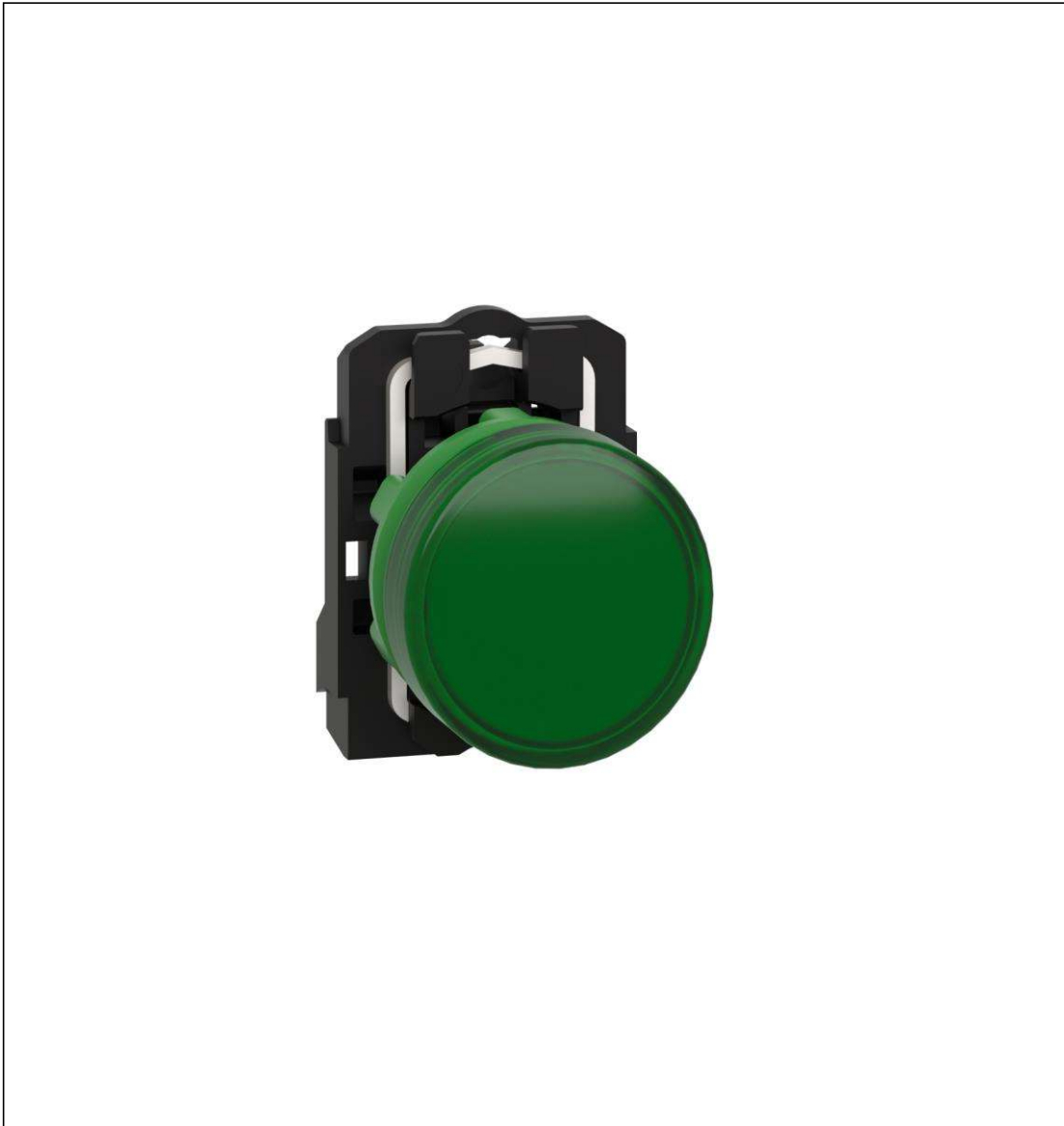


Product Environmental Profile

Harmony XB5 Pilot Light

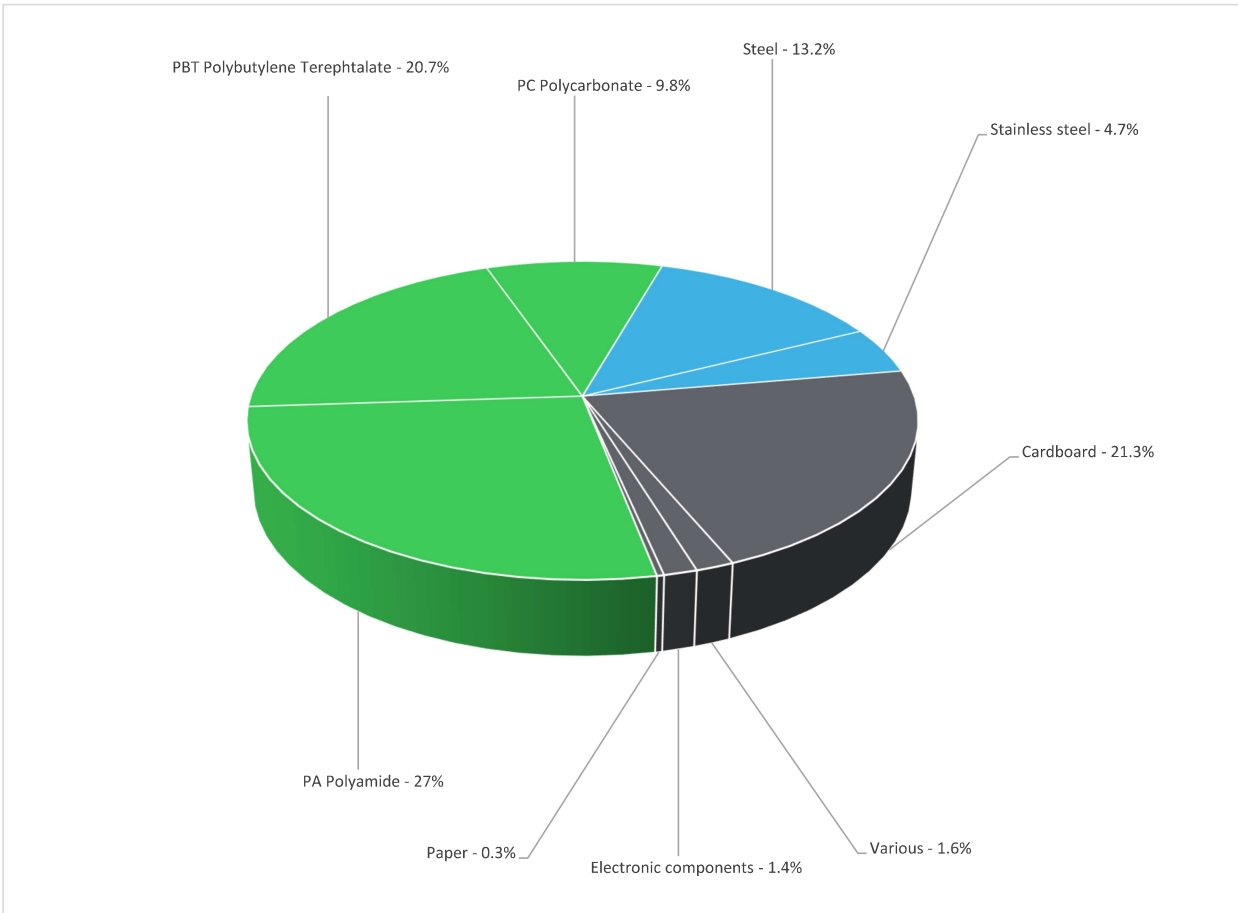


General information

Reference product	Harmony XB5 Pilot Light - XB5AVB3
Description of the product	The function of complete pilot light unit is to provide signal when receive rated voltage input.
Functional unit	Harmony XB5 plain lens modular green pilot light is supplied with 24V AC/DC uses an integral LED and screw clamp terminals. This pilot light designed to last without maintenance for a bright indication of process and machine operations is easily installed into standard 22mm diameter cut-outs and connected with simple screw-clamp connections. It is clearly distinguishable visually at a distance with bright and long lasting LED illumination. Its plastic bezel makes it ideal for applications requiring good resistance to chemical agents and/or double electrical insulation. Product has life span of 10 years and meets the international standards such as IEC 60947-5-1.

Constituent materials

Reference product mass 36 g including the product, its packaging and additional elements and accessories



Plastics	57.5%
Metals	17.9%
Others	24.6%

Substance assessment

Details of ROHS and REACH substances information are available on the Schneider-Electric Green Premium website <https://www.se.com/ww/en/work/support/green-premium/>

Additional environmental information

End Of Life	Recyclability potential:	22%	Recyclability rate has been calculated based on REEECYLAB tool developed by Ecosystem, for components/materials not covered by the tool, data from the "ECO'DEEE recyclability and recoverability calculation method" was taken. If no data was found a conservative assumption was used (0% recyclability).
--------------------	--------------------------	------------	--

Environmental impacts

Reference service life time	10 years			
Product category	Other equipments - Active product			
Installation elements	No special installation components need during installation phase, but transport of packaging to disposal, and disposal of packaging accounted for during installation.			
Use scenario	The product is in active mode 71% of the time with a power use of 0.432W and off mode 29% of the time with a power use of 0 W for 10 years			
Technological representativeness	The Modules of Technologies such as material production, manufacturing process and transport technology used in this PEP analysis (LCA-EIME in this case) are similar and representative of the actual type of technologies used to make the product.			
Geographical representativeness	Global			
Energy model used	[A1 - A3]	[A5]	[B6]	[C1 - C4]
	Electricity Mix; Production mix; Low voltage; UE-27	Electricity Mix; Production mix; Low voltage; UE-27	Electricity Mix; Production mix; Low voltage; UE-27	Electricity Mix; Production mix; Low voltage; UE-27
		Electricity Mix; Production mix; Low voltage; APAC	Electricity Mix; Production mix; Low voltage; APAC	Electricity Mix; Production mix; Low voltage; APAC
		Electricity Mix; Production mix; Low voltage; US	Electricity Mix; Production mix; Low voltage; US	Electricity Mix; Production mix; Low voltage; US
		Electricity Mix; Production mix; Low voltage; BR	Electricity Mix; Production mix; Low voltage; BR	Electricity Mix; Production mix; Low voltage; BR
		Electricity Mix; Production mix; Low voltage; RU	Electricity Mix; Production mix; Low voltage; RU	Electricity Mix; Production mix; Low voltage; RU

Detailed results, including all the optional indicators mentioned in PCRred4 are available in the LCA report and on demand in a digital format - Country Customer Care Center - <http://www.schneider-electric.com/contact>

Mandatory Indicators			Harmony XB5 Pilot Light - XB5AVB3					
Impact indicators	Unit	Total	Manufacturing	Distribution	Installation	Use	End of Life	Loads and Benefits
			[A1 - A3]	[A4]	[A5]	[B1 - B7]	[C1 - C4]	[D]
Contribution to climate change	kg CO2 eq	1.40E+01	2.61E-01	4.71E-03	1.40E-02	1.37E+01	6.25E-02	-4.24E-02
Contribution to climate change-fossil	kg CO2 eq	1.40E+01	2.59E-01	4.71E-03	1.34E-02	1.37E+01	6.24E-02	-4.17E-02
Contribution to climate change-biogenic	kg CO2 eq	1.64E-02	2.56E-03	0*	6.22E-04	1.31E-02	4.84E-05	-6.29E-04
Contribution to climate change-land use and land use change	kg CO2 eq	1.27E-09	1.27E-09	0*	0*	0*	0*	0.00E+00
Contribution to ozone depletion	kg CFC-11 eq	1.20E-07	5.65E-08	0*	9.26E-10	6.20E-08	2.89E-10	-4.41E-09
Contribution to acidification	mol H+ eq	8.53E-02	1.67E-03	3.03E-05	5.55E-05	8.34E-02	1.03E-04	-2.28E-04
Contribution to eutrophication, freshwater	kg (PO4) ³⁻ eq	2.48E-05	3.00E-06	0*	1.01E-07	2.17E-05	2.06E-08	-2.09E-07
Contribution to eutrophication marine	kg N eq	9.72E-03	3.22E-04	1.42E-05	1.47E-05	9.33E-03	3.35E-05	-3.52E-05
Contribution to eutrophication, terrestrial	mol N eq	1.30E-01	3.43E-03	1.56E-04	1.11E-04	1.26E-01	1.93E-04	-3.41E-04
Contribution to photochemical ozone formation - human health	kg COVNM eq	3.17E-02	1.15E-03	3.94E-05	2.96E-05	3.05E-02	6.17E-05	-1.05E-04
Contribution to resource use, minerals and metals	kg Sb eq	2.64E-04	2.64E-04	0*	0*	6.61E-07	0*	-7.63E-06
Contribution to resource use, fossils	MJ	2.96E+02	4.18E+00	6.56E-02	1.46E-01	2.90E+02	1.36E+00	-7.17E-01
Contribution to water use	m3 eq	8.69E-01	2.68E-02	0*	5.97E-03	5.09E-01	3.27E-01	-2.07E-02

Additional indicators for the French regulation are available as well

Inventory flows Indicators	Harmony XB5 Pilot Light - XB5AVB3								
	Inventory flows	Unit	Total	Manufact.	Distribution	Installation	Use	End of Life	Loads and Benefits
				[A1 - A3]	[A4]	[A5]	[B1 - B7]	[C1 - C4]	[D]
Contribution to use of renewable primary energy excluding renewable primary energy used as raw material	MJ	5.21E+01	0*	0*	1.04E-02	5.21E+01	0*	7.84E-02	
Contribution to use of renewable primary energy resources used as raw material	MJ	1.53E-01	1.53E-01	0*	0*	0*	0*	-1.38E-01	
Contribution to total use of renewable primary energy resources	MJ	5.22E+01	1.41E-01	0*	1.04E-02	5.21E+01	0*	-6.00E-02	
Contribution to use of non renewable primary energy excluding non renewable primary energy used as raw material	MJ	2.95E+02	3.64E+00	6.56E-02	1.46E-01	2.90E+02	1.36E+00	-7.17E-01	
Contribution to use of non renewable primary energy resources used as raw material	MJ	5.35E-01	5.35E-01	0*	0*	0*	0*	0.00E+00	
Contribution to total use of non-renewable primary energy resources	MJ	2.96E+02	4.18E+00	6.56E-02	1.46E-01	2.90E+02	1.36E+00	-7.17E-01	
Contribution to use of secondary material	kg	2.28E-05	2.28E-05	0*	0*	0*	0*	0.00E+00	
Contribution to use of renewable secondary fuels	MJ	0.00E+00	0*	0*	0*	0*	0*	0.00E+00	
Contribution to use of non renewable secondary fuels	MJ	0.00E+00	0*	0*	0*	0*	0*	0.00E+00	
Contribution to net use of freshwater	m³	2.11E-02	6.25E-04	0*	1.39E-04	1.19E-02	8.52E-03	-4.82E-04	
Contribution to hazardous waste disposed	kg	9.29E-01	6.07E-01	0*	1.65E-04	2.94E-01	2.82E-02	-6.03E-01	
Contribution to non hazardous waste disposed	kg	2.50E+00	3.69E-01	0*	4.55E-02	2.07E+00	1.43E-02	-2.20E-01	
Contribution to radioactive waste disposed	kg	4.91E-04	1.60E-04	1.18E-07	6.11E-06	3.25E-04	6.46E-07	-1.91E-05	
Contribution to components for reuse	kg	0.00E+00	0*	0*	0*	0*	0*	0.00E+00	
Contribution to materials for recycling	kg	1.39E-02	0*	0*	7.69E-03	0*	6.24E-03	0.00E+00	
Contribution to materials for energy recovery	kg	0.00E+00	0*	0*	0*	0*	0*	0.00E+00	
Contribution to exported energy	MJ	0.00E+00	0*	0*	0*	0*	0*	0.00E+00	
Contribution to biogenic carbon content of the product	kg de C	0.00E+00	0*	0*	0*	0*	0*	0.00E+00	
Contribution to biogenic carbon content of the associated packaging	kg de C	0.00E+00	0*	0*	0*	0*	0*	0.00E+00	

* represents less than 0.01% of the total life cycle of the reference flow

Life cycle assessment performed with EIME version v5.9.4, database version 2022-01 in compliance with ISO14044.

Detailed results, including all the optional indicators mentioned in PCRed4 are available in the LCA report and on demand in a digital format - Country Customer Care Center - <http://www.schneider-electric.com/contact>

Please note that the values given above are only valid within the context specified and cannot be used directly to draw up the environmental assessment of an installation.

Registration number :	ENVPEP2308027_V1	Drafting rules	PEP-PCR-ed4-2021 09 06
Date of issue	10/2023	Supplemented by	PSR-0005-ed2-2016 03 29
		Information and reference documents	www.pep-ecopassport.org
		Validity period	5 years
Independent verification of the declaration and data, in compliance with ISO 14021 : 2016			
Internal <input checked="" type="checkbox"/> External			
The PCR review was conducted by a panel of experts chaired by Julie ORGELET (DDemain)			
PEP are compliant with XP C08-100-1 :2016 or EN 50693:2019			
The elements of the present PEP cannot be compared with elements from another program.			
Document in compliance with ISO 14021 : 2016 « Environmental labels and declarations. Type II environmental declarations »			

Schneider Electric Industries SAS
Country Customer Care Center
<http://www.schneider-electric.com/contact>
35, rue Joseph Monier
CS 30323
F- 92500 Rueil Malmaison Cedex
RCS Nanterre 954 503 439
Capital social 928 298 512 €