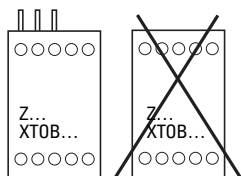
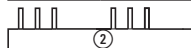
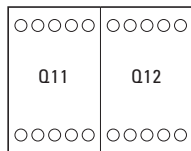
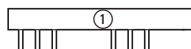


07/21 IL03407031Z

DILM32-X...L, XTCEX...LC DILM32-XRL, XTCEXRLC



①

②

DILM32-XRL XTCEXRLC	M32XP2 XTCEXPBC	M32XR XTCEXRBC
------------------------	--------------------	-------------------

Ratings
600 V AC

MANUAL MOTOR
CONTROLLER

340B



DILM32-XRL, XTCEXRL...	40 A
DILM32-XSL, XTCEXSDL...	40 A



(en) **Electric current!**
Danger to life!

Only skilled or instructed persons may carry out the following operations.

(de) **Lebensgefahr durch elektrischen Strom!**

Nur Elektrofachkräfte und elektrotechnisch unterwiesene Personen dürfen die im Folgenden beschriebenen Arbeiten ausführen.

(fr) **Tension électrique dangereuse !**

Seules les personnes qualifiées et averties doivent exécuter les travaux ci-après.

(es) **¡Corriente eléctrica! ¡Peligro de muerte!**

El trabajo a continuación descrito debe ser realizado por personas cualificadas y advertidas.

(it) **Tensione elettrica: Pericolo di morte!**

Solo persone abilitate e qualificate possono eseguire le operazioni di seguito riportate.

(zh) **触电危险!**

只允许专业人员和受过专业训练的人员进行下列工作。

(ru) **Электрический ток! Опасно для жизни!**

Только специалисты или проинструктированные лица могут выполнять следующие операции.

(ar) **تحذير! تيار كهربائي! خطر موت!**
لا تتم أعمال الصيانة والتركيب إلا من قبل العاملين المدربين!

Spare parts **Z2**
3.2 Nm (25 lb-in)

or – oder – ou – ó – oppure – 或者 – или – أو

Q11 = Q12

Set

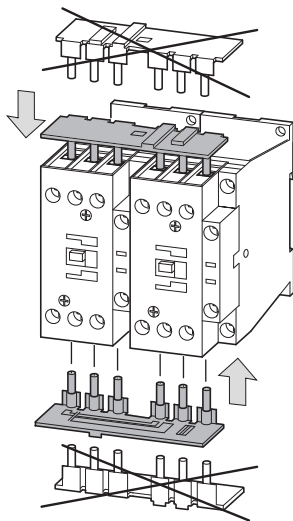
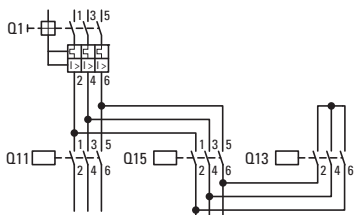
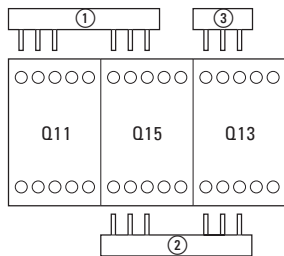
Spare parts

DILM17, XTCE018C...
DILM25, XTCE025C...
DILM32, XTCE032C...

DILM32-XRL
XTCEXRLC

DILM32-XP2 + DILM32-XR
XTCEXPBC + XTCEXRBC

DILM32-XSL, XTCEXSDL



07/21 IL03407031Z

Q11 = Q15 Q13 Set or - oder - ou - ó - oppure -
或者 - или - أو

Spare parts

DILM17 XTCE018C...	DILM17 XTCE018C...	DILM17 XTCE018C...	DILM32-XSL XTCEXSDL	DILM32-XP2 + DILM32-XR + DILM32-XS1 XTCEXPBC + XTCEXRBC + XTCEXSDBC
DILM25 XTCE025C...	DILM25 XTCE025C...	DILM25 XTCE025C...		
DILM32 XTCE032C...	DILM32 XTCE032C...	DILM32 XTCE032C...		

①	②	③	
DILM32-XSL XTCEXSDL	M32XP2 XTCEXPBC	M32XR XTCEXRBC	M32XS1 XTCEXSDBC

