

Product End of Life Instructions

SP5000, 12W WXGA, Analog-Single, DC

Pro-face SP5000



Pro-face
by Schneider Electric

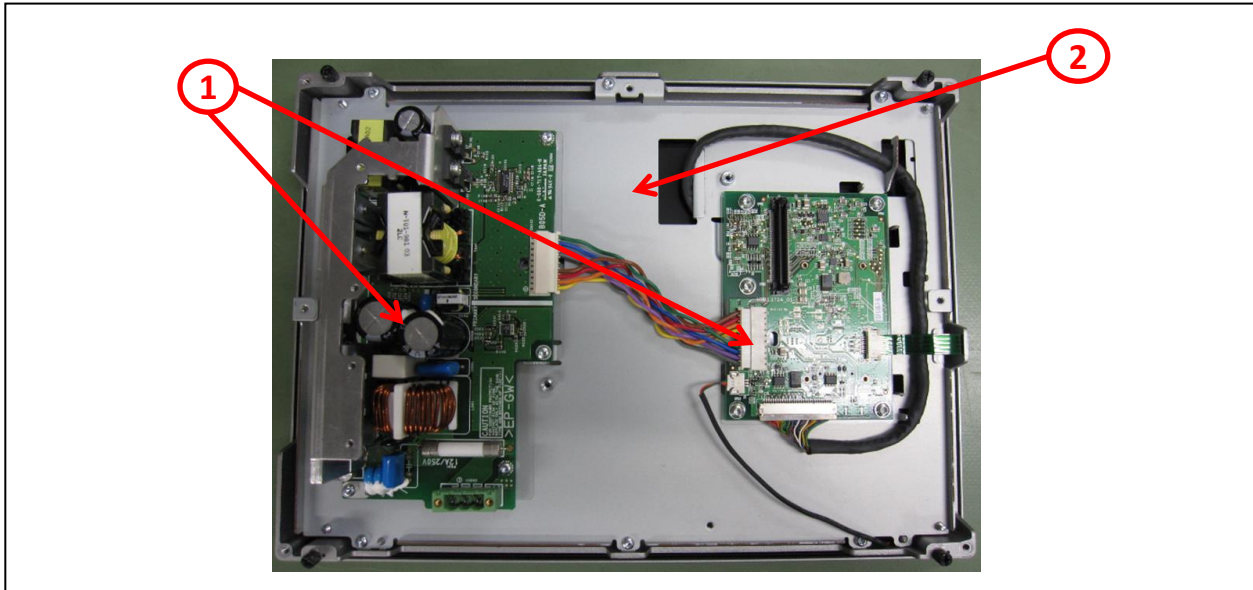


Potential disassembly risks

The Circularity profile provides information about preparation for re-use and treatment. It identifies the relevant EEE components and materials as well as their location. Safety instructions for product dismantling and depollution are provided into the User manual or maintenance guide



End of Life Instructions



Recommendation	Number on drawing	Component / Material	Weight (in g)	Comment
To be depolluted	1	Electronic Board (Communication) > 10cm ²	45	PCBA
To be depolluted	2	LCD (surface > 100cm ²) and all those back-lighted with gas discharge lamps	480	LCD Screen
Other			2475	



Product description

Manufacturer identification	Schneider Electric Industries SAS
Brand name	Pro-face
Product function	Advanced touchscreen panel
Product reference	PFXSP5600WAD
Additional similar product references	PFXSP5400WADF1 PFXSP5400WAD PFXSP5400WADF0C PFXSP5500WAD PFXSP5600WADF0C PFXSP5500WADF0C PFXSP5600WADF1 PFXSP5500WADF2 PFXSP5490WAD PFXSP5400WADF0CA PFXSP5400WADF1A PFXSP5500WADF0CA PFXSP5500WADF1 PFXSP5690WAD PFXSP5690WB4LMI1 PFXSP5790WAD PFXSP5690WADF0H PFXSP5790WADF0H PFXSP5490WADF0H PFXSP5490WADFU PFXSP5690WADFU PFXSP5790WADFU PFXSP5790WADFZ72 PFXRPZDPB1SP5800W0 PFXRPZTFT1SP5800W0 PFXSP5790WADFZKS PM-170309 PM-190142B PFXRPZ1TFT0SP5500W PFXSP5700WCD PFXSP5800WCD
Total representative product mass	3000 g
Representative product dimensions	230.5mm x 308.5mm x 67mm
Accessories	No
Date of information release	05-2024



Additional information

Legal information	This product family is in the scope of European Union directive 2012/19/EU on Waste Electrical and Electronic Equipment (WEEE). The product family must be disposed according to the legislation of the country. This document is intended for use by end of life recyclers or treatment facilities. It provides the basic information to assure an appropriate end of life treatment for the components and materials of the product.	
Recyclability potential	34%	Recyclability rate has been calculated based on REEECYLAB tool developed by Ecosystem, for components/materials not covered by the tool, data from the “ECO’ DEEE recyclability and recoverability calculation method” was taken. If no data was found a conservative assumption was used (0% recyclability).

Schneider Electric Industries SAS

Country Customer Care Center
<http://www.se.com/contact>

35, rue Joseph Monier

CS 30323

F- 92500 Rueil Malmaison Cedex

RCS Nanterre 954 503 439
 Capital social 928 298 512 €

www.se.com

ENVEOLI1401001_V3

Published by Schneider Electric

© 2024 - Schneider Electric – All rights reserved

05-2024