

Product End of Life Instructions

SP5000, Open Box, DC

Pro-face FP



Pro-face
by Schneider Electric

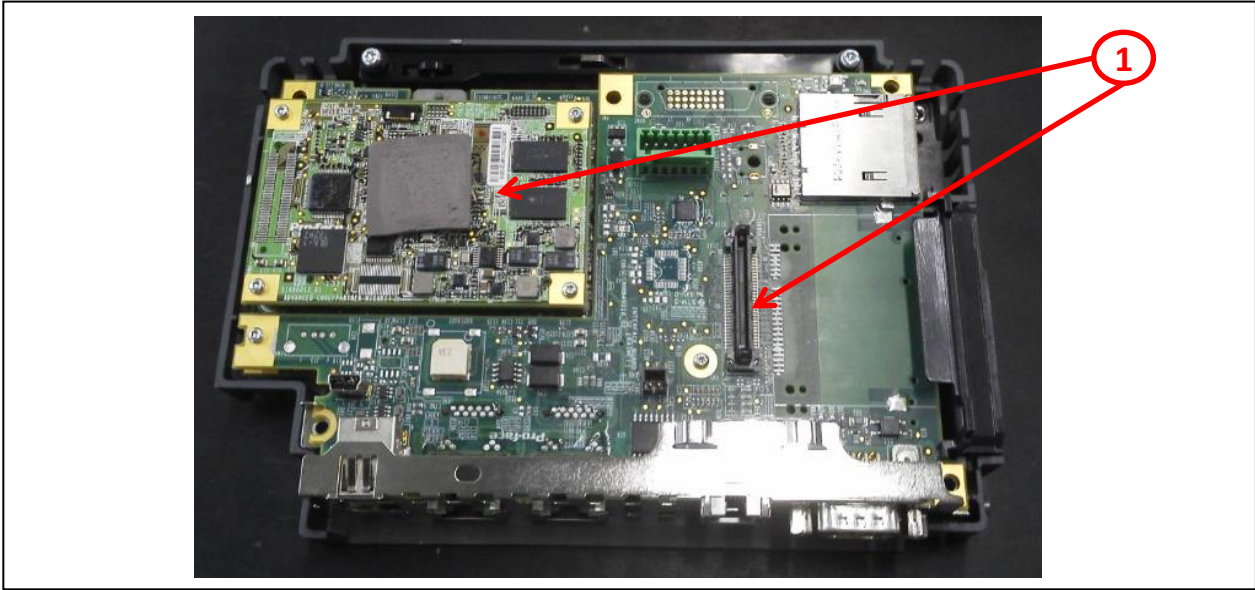


Potential disassembly risks

The Circularity profile provides information about preparation for re-use and treatment. It identifies the relevant EEE components and materials as well as their location. Safety instructions for product dismantling and depollution are provided into the User manual or maintenance guide



End of Life Instructions



Recommendation	Number on drawing	Component / Material	Weight (in g)	Comment
To be depolluted	1	Electronic Board (Communication) > 10cm ²	245	PCBA
Other			655	



Product description

Manufacturer identification	Schneider Electric Industries SAS
Brand name	Pro-face
Product function	The main purpose of the SP5B series is to make available Graphic Operator Interface.
Product reference	PFXSP5B40
Additional similar product references	PFXSP5B10F0C PFXSP5B10 PFXSP5B40F0C PFXSP5B40FZ08 PFXSP5B40FZ24 PFXSP5B40FZ13 PFXSP5B10FZ36 PFXSP5B40FZ43 PFXSP5B41 PFXSP5B41F0C PFXSP5B10LC PFXSP5B41FZ24 PFXSP5B41F0CA PFXSP5B41FZ47 PFXSP5B41S8A PFXSP5B41AR03 PFXSP5B40FT PFXSP5B00 PFXSP5B00F0C PFXSP5B41S8B PFXSP5B90 PFXSP5B41FZ13 PFXSP5B411 PFXSP5B412 PFXSP5B90F0H PFXRPZBSB0SP5B9FH0 PFXRPZCRB0SP5B9FH0 PFXSP5B41FZ47 PFXSP5B41S8A
Total representative product mass	900 g
Representative product dimensions	188mm x 131mm x 35mm
Accessories	No
Date of information release	05-2024



Additional information

Legal information	This product family is in the scope of European Union directive 2012/19/EU on Waste Electrical and Electronic Equipment (WEEE). The product family must be disposed according to the legislation of the country. This document is intended for use by end of life recyclers or treatment facilities. It provides the basic information to assure an appropriate end of life treatment for the components and materials of the product.	
Recyclability potential	62%	Recyclability rate has been calculated based on REEECYLAB tool developed by Ecosystem, for components/materials not covered by the tool, data from the "ECO' DEEE recyclability and recoverability calculation method" was taken. If no data was found a conservative assumption was used (0% recyclability).

Schneider Electric Industries SAS

Country Customer Care Center
<http://www.se.com/contact>

35, rue Joseph Monier
 CS 30323
 F- 92500 Rueil Malmaison Cedex
 RCS Nanterre 954 503 439
 Capital social 928 298 512 €

www.se.com

ENVEOLI1401014_V3

Published by Schneider Electric

© 2024 - Schneider Electric – All rights reserved

05-2024