

# Product End of Life Instructions

**PS6000, Display module (Large size)**

**Multi touch screen, Industrial PC**



**Pro-face**  
by Schneider Electric

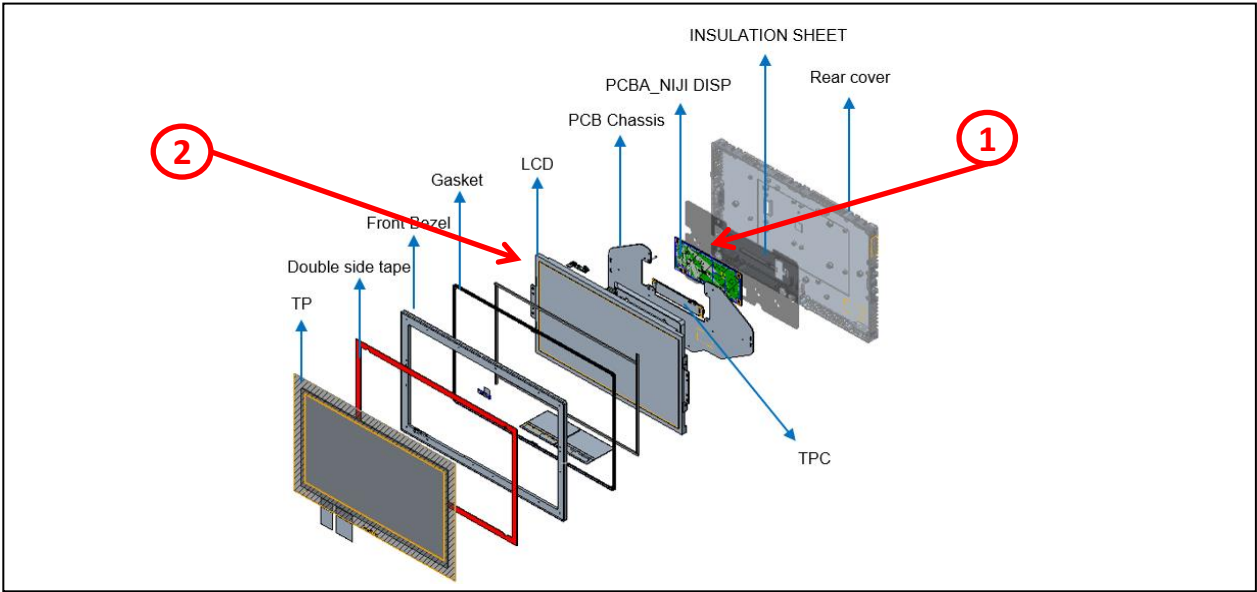


## Potential disassembly risks

The Circularity profile provides information about preparation for re-use and treatment. It identifies the relevant EEE components and materials as well as their location. Safety instructions for product dismantling and depollution are provided into the User manual or maintenance guide



## End of Life Instructions



Recommendation	Number on drawing	Component / Material	Weight (in g)	Comment
To be depolluted	1	Electronic Board (Communication) > 10cm <sup>2</sup>	135	PCBA
To be depolluted	2	LCD (surface > 100cm <sup>2</sup> ) and all those back-lighted with gas discharge lamps	2300	LCD Screen
Other			4065	



## Product description

Manufacturer identification	Schneider Electric Industries SAS
Brand name	Pro-face
Product function	Multi touch screen, Industrial PC
Product reference	PFXDM6900WC
Additional similar product references	PFXDM6900WCB PFXDM6900WCBCTO PFXDM6900WCCTO PFXDM6800WC PFXDM6800WCB PFXDM6800WCBCTO PFXDM6800WCCTO PFXDM6700TM PFXDM6700TMB PFXDM6700TMBCTO PFXDM6700TMCTO PFXDM6700WC PFXDM6700WCB PFXDM6700WCBCTO PFXDM6700WCCTO
Total representative product mass	6500 g
Representative product dimensions	330.6mm x 532.6mm x 32mm
Accessories	No
Date of information release	06-2024



## Additional information

Legal information	This product family is in the scope of European Union directive 2012/19/EU on Waste Electrical and Electronic Equipment (WEEE). The product family must be disposed according to the legislation of the country. This document is intended for use by end of life recyclers or treatment facilities. It provides the basic information to assure an appropriate end of life treatment for the components and materials of the product.	
Recyclability potential	43%	Recyclability rate has been calculated based on REEECYLAB tool developed by Ecosystem, for components/materials not covered by the tool, data from the “ECO’ DEEE recyclability and recoverability calculation method” was taken. If no data was found a conservative assumption was used (0% recyclability).

Schneider Electric Industries SAS

Country Customer Care Center  
<http://www.se.com/contact>

35, rue Joseph Monier  
CS 30323  
F- 92500 Rueil Malmaison Cedex  
RCS Nanterre 954 503 439  
Capital social 928 298 512 €

[www.se.com](http://www.se.com)

ENVEOLI2312022\_V1

Published by Schneider Electric

© 2024 - Schneider Electric – All rights reserved

06-2024