

1) Sensing surface, 2) Housing



### Basic features

Approval/Conformity	CE UKCA cULus WEEE
Basic standard	IEC 60947-5-2
Sensitivity	adjustable on base unit
Series	F01

### Electrical connection

Cable length L	2 m
Connection	Special connector-Special connector
Polarity reversal protected	not relevant
Short-circuit protection	not relevant

### Electrical data

Operating voltage $U_b$	4...8 VDC
Rated insulation voltage $U_i$	75 V DC
Ripple max. (% of $U_e$ )	10 %
Switching frequency	100 Hz
Utilization category	DC -13

### Environmental conditions

Ambient temperature	0...60 °C
IP rating	IP60

### Interface

Interface	Special interface
-----------	-------------------

### Material

Housing material	PC PUR
Material jacket	PUR
Material sensing surface	PUR

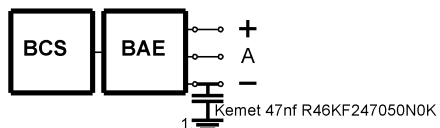
### Mechanical data

Dimension	90 x 16 x 4 mm
Installation	flush with container outer wall

### Range/Distance

Hysteresis H max. (% of $S_r$ )	15.0 %
Measuring range	2...10 mm
Rated operating distance $S_n$	10 mm
Real switching distance $s_r$	10 mm
Repeat accuracy max. (% of $S_r$ )	2 %
Temperature drift max. (% of $S_r$ )	20 %

## Installation remarks



1) Machine GND