

OptiClip 600x600

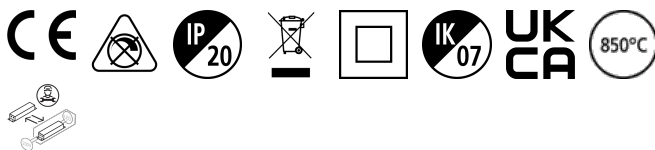
OptiClip 600 3000K C8 WH CC WHITE

0044008



Product features

- OPTICLIP 600 3000K C8 WH CC WHITE is a high efficacy low glare luminaire with replaceable light engines for office and education applications. Ceiling recessed LED luminaire with white colour plastic optic, direct light distribution, luminaire dimensions: 595x595x20mm, Sylvania White body colour (RAL9016), IP20, IK07, Constant Current driver, low LED flicker (+/-5%), Warm White (3000K) LED Colour Temperature, 3100lm luminous flux, 26W power consumption, 119lm/W system efficacy, CRI>80, SDCM 3 (3-step MacAdam ellipse) LED Colour Consistency, UGR<17, Luminance at 65° < 2000 cd/m2, lifespan: 62,000 hours L80B20, photobiological safety risk group 1. Electrical protection Class II. Glow wire test 850°C.



PRODUCT OVERVIEW

Product name	OptiClip 600 3000K C8 WH CC WHITE
Technology	LED (3 SDCM)
Cap/Base	N/A
Housing	Steel
Mount	Ceiling recessed mounting
General application	Education, Office
ETIM Class	EC002892
Warranty	5 years
Fixture luminous flux (lm)	3100
Luminaire efficacy (lm/W)	119
Colour temperature (K)	3000
Light colour	Warm White
CRI (Ra)	80
Colour Variation Initial (SDCM)	SDCM3
Beam Angle (°)	80
Glare control	< 17
Photobiological Risk Group	RG1
Total power consumption (W)	26
Electrical protection	Class II
Control gear type	LED driver constant current
Dimmable	No
LED Flickering Rate	Ultra low (5% or less)
Housing colour	RAL 9016 - Traffic white / Bezel
IP rating	IP20
IK rating	IK07
Product EAN number	5410288440088
Dimming method	N/A

DATA TABLE

General data

OptiClip 600x600

OptiClip 600 3000K C8 WH CC WHITE

0044008

Product name	OptiClip 600 3000K C8 WH CC WHITE
Technology	LED (3 SDCM)
Cap/Base	N/A
Housing	Steel
Mount	Ceiling recessed mounting
General application	Education, Office
Operating temperature range (°C)	-20°C - 25°C
Performance ambient temperature Tq (°C)	25
ETIM Class	EC002892
Warranty	5 years

Optical data

Fixture luminous flux (lm)	3100
Luminaire efficacy (lm/W)	119
Colour temperature (K)	3000
Light colour	Warm White
CRI (Ra)	80
Colour Variation Initial (SDCM)	SDCM3
Beam Angle (°)	80
Distribution type	Symmetric
Glare control	< 17
Photobiological Risk Group	RG1

Electrical data

Total power consumption (W)	26
Mains voltage (V)	220-240V
Lamp power factor	0.92
THD (at 230 V, 50 Hz, full load, at 100% dimming level) xx.x %	15
Electrical protection	Class II
Control gear required	No
Control gear type	LED driver constant current
Transformer required	No
Dimmable	No
Drive current (mA)	700
Inrush Current (A)	40
Inrush Duration (µs)	400
Glow Wire Test (°C)	850
Energy Efficiency Class (A->G) of contained light source	E, E(more than 1 Light Source)
Nominal Frequency (Hz)	50/60Hz
LED Flickering Rate	Ultra low (5% or less)
Max. Luminaires per 16A C Breaker	30
Max. Luminaires per 10A B Breaker	15
Max. Luminaires per 16A B Breaker	18

Lifetime data

Lifespan L70 B50	100000
Lifespan L80 B20	62500

OptiClip 600x600

OptiClip 600 3000K C8 WH CC WHITE
0044008

Physical data

Housing colour	RAL 9016 - Traffic white / Bezel
IP rating	IP20
IK rating	IK07
Diffuser finish	Matt/satinized
Diffuser material	PC Polycarbonate
Nominal Product Length (mm)	595
Nominal Product Width (mm)	595
Nominal Product Height (mm)	20
Weight (kg)	2.8

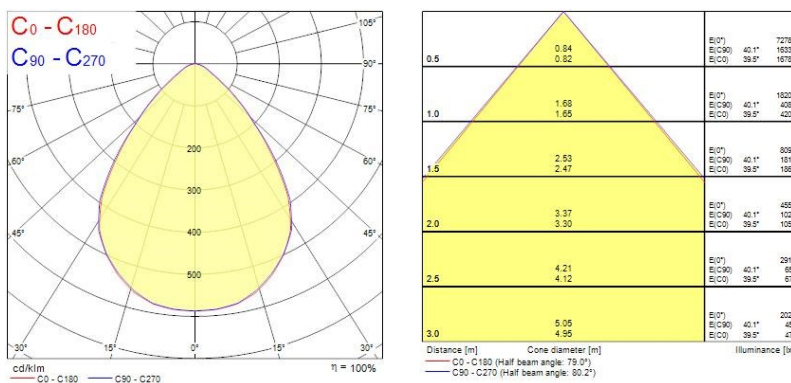
Packaging

Single packaging type	Carton
Product EAN number	5410288440088
Packaging single length / height (cm)	60.0
Packaging single width (cm)	4.0
Packaging single depth (cm)	60.0
DUN14 (outer)	05410288440088
Units per outer package	1
Packaging outer length / height (cm)	60.0
Packaging outer width (cm)	4.0
Packaging outer depth (cm)	60.0

Safety data

Optimal operating condition (°C)	-20-25
----------------------------------	--------

PHOTOMETRY



TECHNICAL DRAWINGS

OptiClip 600x600

OptiClip 600 3000K C8 WH CC WHITE

0044008

