

Sample image

## Datasheet

**Article number:** 70018291

**Designation:** KG41B.T303.E

**Description:** Switch Local Disconnecter

IEC 60947-3 EN 60947-3, VDE 0660 Teil 107						
Rated insulation voltage Ui						
Voltage (V) AC / DC						
690 AC						
Rated uninterrupted current Iu/Ith						
Current (A)	Ambient temperature (°C)	Peak temperature (°C)	additional requirements			
40	50	55	Ambient temperature +50°C during 24 hours with peaks up to +55°C			
Rated operational current Ie						
Utilization category			Voltage (V)		Current (A)	
AC-32A			20 - 400		40	
Rated operational power						
Utilization category	Voltage (V)	No. of phases	No. of poles	Power (kW)		
AC-3	220 - 240	3	3	7,50		
AC-3	380 - 440	3	3	11		
AC-3	660 - 690	3	3	11		
AC-23A	220 - 240	3	3	7,50		
AC-23A	380 - 440	3	3	15		
AC-23A	660 - 690	3	3	15		
Max Fuse Rating IEC						
Fuse characteristic			No. of Fuses		Current (A)	
gG			1		50	
UL60947-4-1 , UL508						
Nominal Voltage						
Voltage (V) AC / DC						
600 AC						
Rated insulation voltage Ui						
Voltage (V) AC / DC						
600 AC						
Rated thermal current						
Current (A)		Ambient temperature (°C)		Additional Text		
42		0 - 40		--		
Horsepower rating						
Across-the-Line Motor Starting		Voltage (V)	No. of phases	No. of poles	Power (HP)	Ambient temperature [°C]
DOL		110 - 120	1	2	2	40
DOL		220 - 240	1	2	5	40
DOL		277 - 277	1	2	7,50	40
DOL		415 - 415	1	2	7,50	40
DOL		440 - 480	1	2	10	40
DOL		550 - 600	1	2	10	40
DOL		110 - 120	3	3	5	40
DOL		220 - 240	3	3	15	40
DOL		415 - 415	3	3	15	40
DOL		440 - 480	3	3	25	40
DOL		550 - 600	3	3	30	40
Pilot duty rating code						
Duty Code						
A600						
SCCR / Max. fuse rating						
Conditions of acceptability						
This device is suitable for use on circuits capable of delivering not more than 10kA rms symmetrical amperes, 600V ac max. when protected by Type RK1 fuses.						
Suitable for use on a circuit capable of delivering not more than 65000 rms symmetrical amperes 600V max., when protected by 60A Class J fuses.						
Temp. rating of wire						
Temperature rating (°C)			Current (A) Text			
60 - 75			-- --			
General Use						
AC / DC	Voltage (V)	Current (A)	No. of phases	No. of poles	No. of contacts in series	
AC	277	42	1	1	1	
AC	600	42	1	2	1	
AC	600	42	3	3	1	
General Information						
Text						
- The operating handle and position indicating means to be used with these manual motor controllers should be provided from the manufacturer, or the operating handle and position indicating means to be used should have been previously evaluated in combination with the manual motor controllers.						

General Information						
Text						
- When intended for use as a motor disconnecter the device shall be provided with a method of being locked in the OFF-position.						
CSA						
Nominal Voltage						
			Voltage (V) AC / DC			
			600 AC			
Rated insulation voltage Ui						
			Voltage (V) AC / DC			
			600 AC			
Rated thermal current						
		Current (A)	Ambient temperature (°C)		Additional Text	
		40	0 - 40		--	
Horsepower rating						
Across-the-Line Motor Starting			Voltage (V)	No. of phases	No. of poles	Power (HP)
			110 - 120	1	2	2
			220 - 240	1	2	5
			277 - 277	1	2	7,50
			415 - 415	1	2	7,50
			440 - 480	1	2	10
			550 - 600	1	2	10
			110 - 120	3	3	5
			220 - 240	3	3	15
			415 - 415	3	3	15
			440 - 480	3	3	25
			550 - 600	3	3	30
Temp. rating of wire						
			Temperature rating (°C)		Current (A) Text	
			75		-- --	
General Use						
AC / DC	Voltage (V)	Current (A)	No. of phases	No. of poles	No. of contacts in series	
AC	277	40	1	1	1	
AC	600	40	1	2	1	
AC	600	40	3	3	1	
GENERAL TECHNICAL INFORMATION						
Tightening torque of screws						
			tightening torque (Nm)		tightening torque (lb-in)	
			1,80		16	
Stripping length						
			Length (mm) --			
			12 STRIPPINGLENGTH			
Size of conductor						
composition of conductor		Min. / Max. value		No. of conductor per terminal	Cross section (mm²) or (AWG/kcmil)	
flexible wire		Max.		1	AWG 6	
flexible wire		Max.		1	10mm²	
Single-core or stranded wire		Max.		1	AWG 6	
Single-core or stranded wire		Max.		1	16mm²	
flexible wire with sleeve		Max.		1	10mm²	
Material of the wire						
					Copper	
Copper						
Copper						
Copper						
Copper						
Copper						
Copper						
Copper						
Copper						
Copper						
Copper						
Copper						
Copper						
Copper						
Copper						
Copper						
Copper						
Copper						
Copper						
Copper						
Copper						
Copper						
Copper						
Copper						
Copper						
Copper						
Copper						
Copper						
Copper						
Copper						
Copper						
Copper						
Copper						
Copper						
Copper						
Copper						
Copper						
Copper						
Copper						
Copper						
Copper						
Copper						
Copper						
Copper						
Copper						
Copper						
Copper						
Copper						
Copper						
Copper						
Copper						
Copper						
Copper						
Copper						
Copper						
Copper						
Copper						
Copper						
Copper						
Copper						
Copper						
Copper						
Copper						
Copper						
Copper						
Copper						
Copper						
Copper						
Copper						
Copper						
Copper						
Copper						
Copper						
Copper						
Copper						
Copper						
Copper						
Copper						
Copper						
Copper						
Copper						
Copper						
Copper						
Copper						
Copper						
Copper						
Copper						
Copper						
Copper						
Copper						
Copper						
Copper						
Copper						
Copper						
Copper						
Copper						
Copper						
Copper						
Copper						
Copper						
Copper						
Copper						
Copper						
Copper						
Copper						
Copper						
Copper						
Copper						
Copper						
Copper						
Copper						
Copper						
Copper						
Copper						
Copper						
Copper						
Copper						
Copper						
Copper						
Copper						
Copper						
Copper						
Copper						
Copper						
Copper						
Copper						
Copper						
Copper						
Copper						
Copper						
Copper						
Copper						
Copper						
Copper						
Copper						
Copper						
Copper						
Copper						
Copper						
Copper						
Copper						
Copper						
Copper						
Copper						
Copper						
Copper						
Copper						
Copper						
Copper						
Copper						
Copper						
Copper						
Copper						
Copper						
Copper						
Copper						
Copper						
Copper						
Copper						
Copper						
Copper						
Copper						
Copper						
Copper						
Copper						
Copper						
Copper						
Copper						
Copper						
Copper						
Copper						
Copper						
Copper						
Copper						
Copper						
Copper						
Copper						
Copper						
Copper						
Copper						
Copper						
Copper						
Copper						
Copper						
Copper						
Copper						
Copper						
Copper						
Copper						
Copper						
Copper						
Copper						
Copper						
Copper						
Copper						
Copper						
Copper						
Copper						
Copper						
Copper						
Copper						
Copper						
Copper						
Copper						
Copper						
Copper						
Copper						
Copper						
Copper						
Copper						
Copper						
Copper						
Copper						
Copper						
Copper						
Copper						
Copper						
Copper						
Copper						
Copper						
Copper						
Copper						
Copper						
Copper						
Copper						
Copper						
Copper						
Copper						
Copper						

#### Proposition 65

Picture name

Description



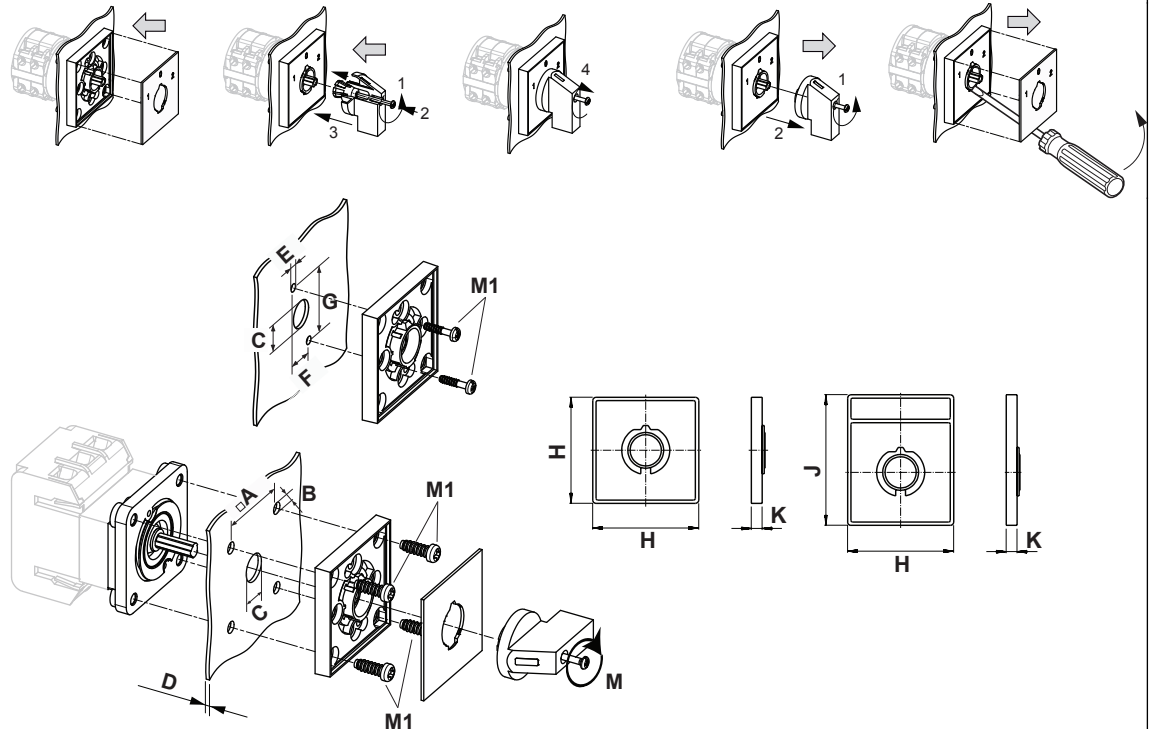
WARNING: This product can expose you to chemicals including nickel and lead, which is known to the State of California to cause cancer. For more information go to [www.P65Warnings.ca.gov](http://www.P65Warnings.ca.gov).

Classification Contact: Rigid contact bridge

Classification Contact Mat: Silver

Classification Terminal: Screw terminal

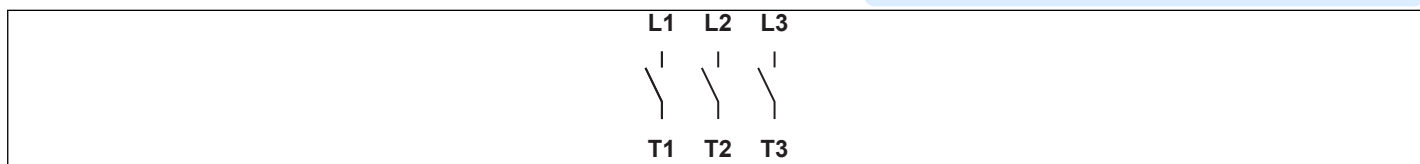
#### Mounting-E



IP - Code front side		IP66, IP67
Stages		1,00 - 12,00
A	□	48,00 mm
B	∅	5,00 mm
C	∅	10,00 - 15,00 mm
D	H	<= 4,00 mm
E	∅	3,50 mm
F	H	12,20 mm
G	H	30,00 mm
H	H	64,00 mm
J	H	78,50 mm
K	H	7,40 mm
M	⌀	0,70 Nm
M1	⌀	0,90 Nm


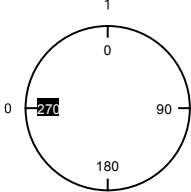

## Wiring diagram

KG41B.T303.E



## Switch program

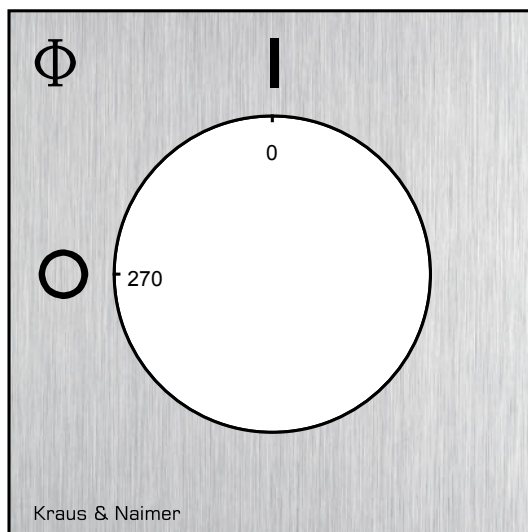
KG41B.T303.E

 Kraus & Naimer		KG41B		T303		Page 1 of 1			
<b>Face Plate</b>									
		L1 1	L2 3	L3 5	7	9	11	13	15
									
Switching Angle <input type="text" value="90"/> Total switching Angle <input type="text" value="90"/>		2 T1	4 T2	6 T3	8	10	12	14	16
0	270								
1	0								
	90								
	180								

Version: 102

## Face plate

S1.F456/A1B.PEL



## HANDLES

**Designation:** S1B.G251

**Handle colour:** "1" black

