



Sample image





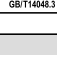
## Datasheet

**Article number:** 70022632

**Designation:** KG20.T103/NL-EXBC.\*KNBOX

**Description:** Switch

<b>IEC 60947-3 EN 60947-3, VDE 0660 Teil 107</b>						
<b>Märkdriftspänning Ui</b>						
<i>Spänning (V) AC / DC</i>						
690 AC						
<b>Märkdriftström vid konstant drift</b>						
<i>Ström (A)</i>	<i>Omgivningstemperatur (°C)</i>	<i>Temperatur topp (°C) ytterligare krav</i>				
25	50	55 Omgivningstemperatur +50°C under 24 timmar med toppar upp till +55°C				
<b>Märkdriftström Ie</b>						
<i>Urvals kriterie</i>				<i>Spänning (V)</i>		<i>Ström (A)</i>
AC-32A				20 - 400		20
<b>Märkdrifteffekt</b>						
<i>Urvals kriterie</i>	<i>Spänning (V)</i>	<i>No. of phases</i>	<i>No. of poles</i>	<i>Effekt (kW)</i>		
AC-3	220 - 240	3	3	4		
AC-3	380 - 440	3	3	5,50		
AC-3	660 - 690	3	3	5,50		
AC-23A	220 - 240	3	3	5,50		
AC-23A	380 - 440	3	3	7,50		
AC-23A	660 - 690	3	3	7,50		
<b>Max försäkring, IEC</b>						
<i>Säkringskaraktäristik</i>				<i>Antal säkringar</i>		<i>Ström (A)</i>
gG				1		35
<b>UL60947-4-1 , UL508</b>						
<b>Nominal Voltage</b>						
<i>Spänning (V) AC / DC</i>						
600 AC						
<b>Märkdriftspänning Ui</b>						
<i>Spänning (V) AC / DC</i>						
600 AC						
<b>Rated thermal current</b>						
<i>Ström (A)</i>			<i>Omgivningstemperatur (°C) Additional Text</i>			
25			0 - 40 --			
<b>Horsepower rating</b>						
<i>Across-the-Line Motor Starting</i>		<i>Spänning (V)</i>	<i>No. of phases</i>	<i>No. of poles</i>	<i>Power (HP)</i>	<i>Ambient temperature [°C]</i>
DOL		110 - 120	1	2	1	40
DOL		220 - 240	1	2	3	40
DOL		277 - 277	1	2	3	40
DOL		415 - 415	1	2	5	40
DOL		440 - 480	1	2	5	40
DOL		550 - 600	1	2	5	40
DOL		110 - 120	3	3	2	40
DOL		200 - 240	3	3	7,50	40
DOL		415 - 415	3	3	10	40
DOL		440 - 480	3	3	15	40
DOL		550 - 600	3	3	20	40
<b>Pilot duty rating code</b>						
<i>Duty Code</i>						
A600						
<b>SCCR / Max. fuse rating</b>						
<i>Conditions of acceptability</i>						
This device is suitable for use on circuits capable of delivering not more than 10kA rms symmetrical amperes, 600V ac max. when protected by Type RK1 fuses.						
Suitable for use on a circuit capable of delivering not more than 65000 rms symmetrical amperes at 600V max., when protected by 40A Class J fuses.						
<b>Temp. rating of wire</b>						
<i>Temperature rating (°C)</i>			<i>Ström (A) Text</i>			
60 - 75			-- --			
<b>General Use</b>						
<i>AC / DC</i>	<i>Spänning (V)</i>	<i>Ström (A)</i>	<i>No. of phases</i>	<i>No. of poles</i>	<i>No. of contacts in series</i>	
AC	277	25	1	1	1	
AC	600	25	1	2	1	

General Use						
AC / DC	Spänning (V)	Ström (A)	No. of phases	No. of poles	No. of contacts in series	
AC	600	25	3	3	1	
General Information						
Text						
- The operating handle and position indicating means to be used with these manual motor controllers should be provided from the manufacturer, or the operating handle and position indicating means to be used should have been previously evaluated in combination with the manual motor controllers.						
- När brytaren används som säkerhetsbrytare skall den vara utrustad med vred som är låsbart i läge "0".						
CSA						
Nominal Voltage						
				Spänning (V) AC / DC		
				600 AC		
Märkdriftspänning UI						
				Spänning (V) AC / DC		
				600 AC		
Rated thermal current						
		Ström (A)	Omgivningstemperatur (°C)		Additional Text	
		25	0 - 40		-	
Horsepower rating						
Across-the-Line Motor Starting	Spänning (V)	No. of phases	No. of poles	Power (HP)	Ambient temperature [°C]	
DOL	110 - 120	1	2	1	40	
DOL	220 - 240	1	2	3	40	
DOL	277 - 277	1	2	3	40	
DOL	415 - 415	1	2	5	40	
DOL	440 - 480	1	2	5	40	
DOL	550 - 600	1	2	5	40	
DOL	110 - 120	3	3	2	40	
DOL	220 - 240	3	3	7,50	40	
DOL	415 - 415	3	3	10	40	
DOL	440 - 480	3	3	15	40	
DOL	550 - 600	3	3	20	40	
Pilot duty rating code						
Duty Code						
A600						
Temp. rating of wire						
			Temperature rating (°C)	Ström (A) Text		
			75	-- --		
General Use						
AC / DC	Spänning (V)	Ström (A)	No. of phases	No. of poles	No. of contacts in series	
AC	277	25	1	1	1	
AC	600	25	1	2	1	
AC	600	25	3	3	1	
GENERAL TECHNICAL INFORMATION						
Tightening torque of screws						
				tightening torque (Nm)	tightening torque (lb-in)	
				1,25	11	
Stripping length						
				Length (mm) -		
				9	STRIPPINGLENGTH	
Size of conductor						
composition of conductor	Min. / Max. value	No. of conductor per terminal		Cross section (mm <sup>2</sup> ) or (AWG/kcmil)	Material of the wire	
flexible wire	Max.	1		AWG 10	Copper	
flexible wire	Max.	1		4mm <sup>2</sup>	Copper	
Single-core or stranded wire	Max.	1		6mm <sup>2</sup>	Copper	
Single-core or stranded wire	Max.	1		AWG 10	Copper	
flexible wire with sleeve	Max.	1		4mm <sup>2</sup>	Copper	
Approbations						
Specification						Marking
EAC						
CE marking						
UK Directives						
CSA C.22.2 No.14						
GB/T14048.3						
Rekomenderad skruvmejsel						
Typ av skruvmejsel				Value		
Stjärnskruvmejsel				PH2		
Slot screwdriver according to DIN 5264				0,8x4		
General Information						
Text						
- EMC Note: This device is suitable for use in environment A and B.						


## General Information

### Text

- Smörjning och behandling av kontaktarna är förbjuden.
- Inkoppling och service av strömställaren får endast utföras av behörig personal. Strömställaren är underhållsfri.
- Använd endast kopparkabel. Kabeln får inte förtennas.
- Alla anslutningskruvar måste dras med rekommenderat moment, även de som inte används då det kan finnas interna överkopplingar.


## Waste Electrical & Electronic Equipment (WEEE)

### Picture name Description

 Do not throw in the trash as care must be taken to ensure environmentally sound disposal and recycling. Please either use an environmentally friendly waste disposal company; return to the supplier for disposal; or return direct to the manufacturer, Kraus & Naimer. You can find local Kraus & Naimer offices at [www.krausnaimer.com](http://www.krausnaimer.com)

## Proposition 65

### Picture name Description

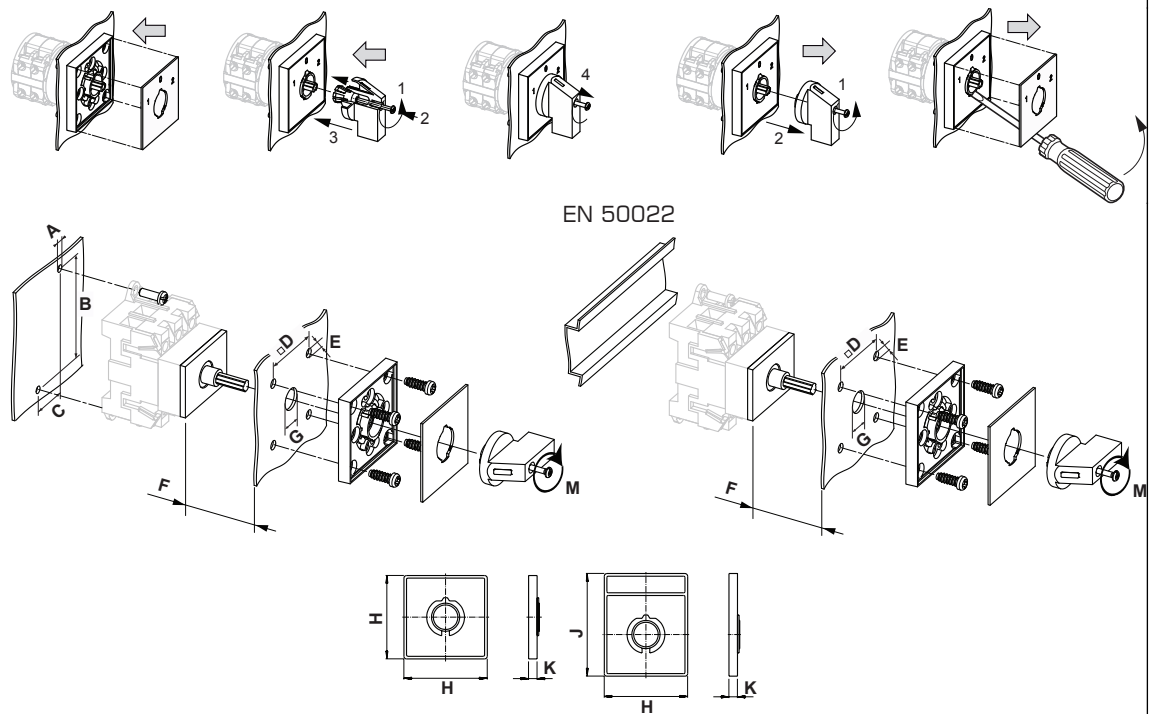
 WARNING: This product can expose you to chemicals including nickel and lead, which is known to the State of California to cause cancer. For more information go to [www.P65Warnings.ca.gov](http://www.P65Warnings.ca.gov).

Classification Contact: Rigid contact bridge

Classification Contact Mat: Silver

Classification Terminal: Screw terminal

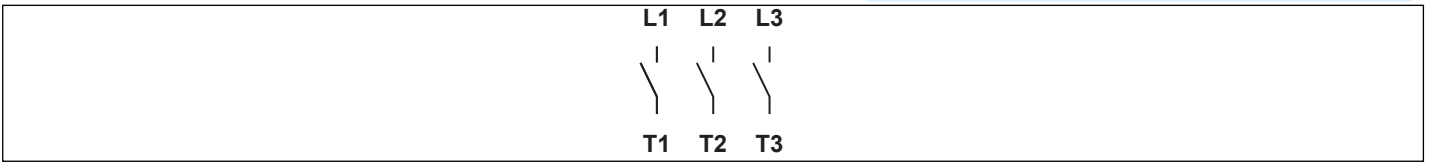
## Mounting-VE



Skyddsklass frontpanel, IP		IP40
Stages		1,00 - 5,00
A	Ø	4,10 mm
B	H	60,00 mm
B_tol.	H	± 0,50 mm
C	H	22,00 mm
C_tol.	H	± 0,50 mm
D	□	36,00 mm
E	Ø	5,00 mm
F	H	<= 12,00 mm
G	Ø	10,00 - 15,00 mm
H	H	48,00 mm
J	H	59,00 mm
K	H	6,70 mm
M	M̄	0,50 Nm

**Wiring diagram**

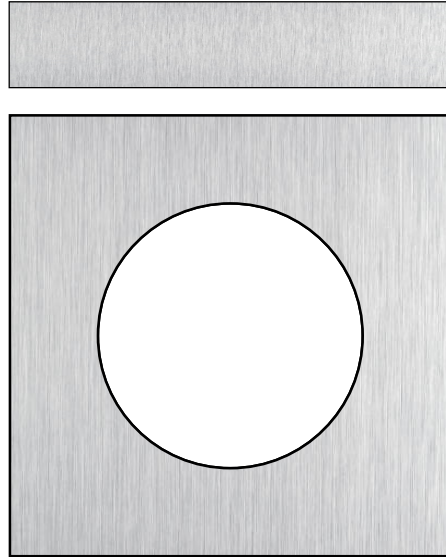
KG20A.T303.VE





**Face plate**

S1.F991/A00.P2B



## AUXILIARY CONTACTS (cam operated) for switch type KG20 - KG100C and KH(R)16 - KH(R)25B

**Designation:** K0.M510A/2CA-B

**Number of contacts:** "2" 2 auxiliary contacts

**Operation of contacts:** "C" 1 auxiliary contact closed in pos. 1 and 1 auxiliary contact closed in pos. 0 (NO/NC)

**Type of version:** "A" 1. auxiliary contact module

**Type of mounting:** "-B" for type of mounting VE, VE2, silver contacts

IEC 60947-3 EN 60947-3, VDE 0660 Teil 107					
<b>Nominal Voltage</b>					
			Spänning (V) AC / DC		
			500 AC		
			690 AC		
<b>Märkdriftström vid konstant drift</b>					
Ström (A)	Omgivningstemperatur (°C)	Temperatur topp (°C)	ytterligare krav		
10	55	60	Omgivningstemperatur +55°C under 24 timmar med toppar upp till +60°C		
16	55	60	Omgivningstemperatur +55°C under 24 timmar med toppar upp till +60°C		
<b>Märkdriftström Ie</b>					
Urvals kriterie		Spänning (V)		Ström (A)	
AC-15		110 - 240		2,50	
AC-15		380 - 440		1,50	
AC-15		500		1	
AC-21A		500		10	
<b>UL60947-4-1 , UL508</b>					
<b>Nominal Voltage</b>					
			Spänning (V) AC / DC		
			600 AC		
<b>Märkdriftspänning Ui</b>					
			Spänning (V) AC / DC		
			600 AC		
<b>Rated thermal current</b>					
		Ström (A)	Omgivningstemperatur (°C)	Additional Text	
		10	0 - 40	-	
<b>Pilot duty rating code</b>					
Duty Code					
A600					
<b>General Use</b>					
AC / DC	Spänning (V)	Ström (A)	No. of phases	No. of poles	No. of contacts in series
AC	600	10	1	1	1
<b>GENERAL TECHNICAL INFORMATION</b>					
<b>Tightening torque of screws</b>					
			tightening torque (Nm)	tightening torque (lb-in)	
			0,60	5	
<b>Stripping length</b>					
			Length (mm) -		
			6	STRIPPINGLENGTH	
<b>Size of conductor</b>					
composition of conductor	Min. / Max. value	No. of conductor per terminal	Cross section (mm <sup>2</sup> ) or (AWG/kcmil)		Material of the wire
solid wire	Min.	1	0,5mm <sup>2</sup>		Copper
solid wire	Min.	2	0,5mm <sup>2</sup>		Copper
flexible wire	Min.	1	0,75mm <sup>2</sup>		Copper
flexible wire	Min.	2	0,75mm <sup>2</sup>		Copper
flexible wire	Max.	2	AWG 16		Copper
flexible wire	Max.	2	1,5mm <sup>2</sup>		Copper
Single-core or stranded wire	Max.	2	AWG 14		Copper

<b>Size of conductor</b>				
<i>composition of conductor</i>	<i>Min. / Max. value</i>	<i>No. of conductor per terminal</i>	<i>Cross section (mm<sup>2</sup>) or (AWG/kcmil)</i>	<i>Material of the wire</i>
Single-core or stranded wire	Max.	2	1,5mm <sup>2</sup>	Copper
flexible wire with ferrule according to DIN 46228	Max.	2	1mm <sup>2</sup>	Copper
flexible wire with ferrule according to DIN 46228	Min.	1	0,5mm <sup>2</sup>	Copper
flexible wire with ferrule according to DIN 46228	Min.	2	0,5mm <sup>2</sup>	Copper
<b>Rekomenderad skruvmejsel</b>				
<i>Typ av skruvmejsel</i>	<i>Value</i>			
Stjärskruvmejsel	PH1			
Slot screwdriver according to DIN 5264	0,6x3,5			
<b>General Information</b>				
<i>Text</i>				
<p>- Smörjning och behandling av kontakterna är förbjuden.</p> <p>- Inkoppling och service av strömställaren får endast utföras av behörig personal. Strömställaren är underhållsfri.</p> <p>- Använd endast kopparkabel. Kabeln får inte förtennas.</p>				
