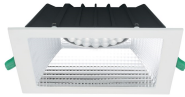


INSAVER SLIM SQUARE 200

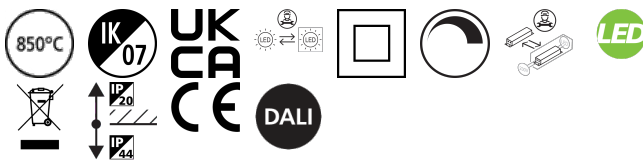
Insaver Slim UGR19 IP44 DALI 200 2500lm 840 Square

0030543



Product features

- Insaver Slim is a ceiling recessed LED downlight (IP44 from the front), Die-cast aluminium body, loop in loop out connector for quick installation, Dimmable DALI driver of TRIDONIC (LCA 25W 350-1050mA one4all SR PRE 28000671), 20W; 2500lm; 125lm/W; 4000K; UGR <19 with shallow product depth 65mm. Meets TP(a) requirements.



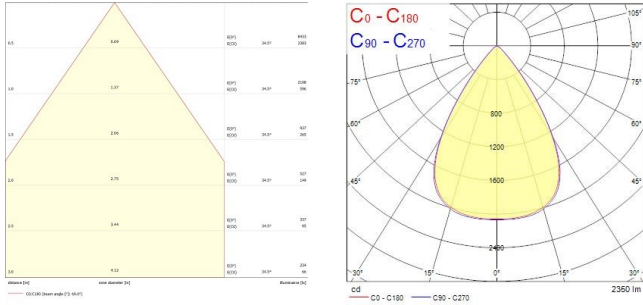
PRODUCT OVERVIEW

Product name	Insaver Slim UGR19 IP44 DALI 200 2500lm 840 Square
Technology	LED
Cap/Base	N/A
Housing	Aluminium
Mount	Ceiling recessed mounting
General application	Hospitality, Office, Retail
ETIM Class	EC001744
E-number FI	4278544
Warranty	5 years
Fixture luminous flux (lm)	2500
Luminaire efficacy (lm/W)	125
Colour temperature (K)	4000
Colour Code	840
Light colour	Neutral White
CRI (Ra)	80
Colour Variation Initial (SDCM)	SDCM3
Beam Angle (°)	70
Beam Angle (°)	NA
Glare control	< 19
Photobiological Risk Group	RG1
Total power consumption (W)	20
Electrical protection	Class II
Control gear type	LED driver constant current
Dimmable	Yes
Dimming method	DALI
Minimum dimming level (%)	1
LED Flickering Rate	Ultra low (5% or less)
Housing colour	RAL 9003 - Signal white
IP rating	IP44/20
IK rating	IK07
Product EAN number	5410288305431

INSAVER SLIM SQUARE 200

Insaver Slim UGR19 IP44 DALI 200 2500lm 840 Square
0030543

PHOTOMETRY



TECHNICAL DRAWINGS

