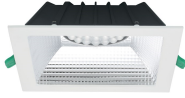


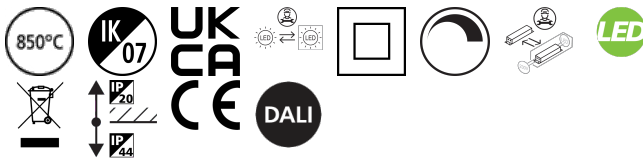
INSAVER SLIM SQUARE 200

Insaver Slim UGR19 IP44 DALI 200 2500lm 840 Square
0030543



Product features

- Insaver Slim is a ceiling recessed LED downlight (IP44 from the front), Die-cast aluminium body, loop in loop out connector for quick installation, Dimmable DALI driver of TRIDONIC (LCA 25W 350-1050mA one4all SR PRE 28000671), 20W; 2500lm; 125lm/W; 4000K; UGR <19 with shallow product depth 65mm. Meets TP(a) requirements.



PRODUCT OVERVIEW

Product name	Insaver Slim UGR19 IP44 DALI 200 2500lm 840 Square
Technology	LED
Cap/Base	N/A
Housing	Aluminium
Mount	Ceiling recessed mounting
General application	Hospitality, Office, Retail
ETIM Class	EC001744
E-number FI	4278544
Warranty	5 years
Fixture luminous flux (lm)	2500
Luminaire efficacy (lm/W)	125
Colour temperature (K)	4000
Colour Code	840
Light colour	Neutral White
CRI (Ra)	80
Colour Variation Initial (SDCM)	SDCM3
Beam Angle (°)	70
Beam Angle (°)	NA
Glare control	< 19
Photobiological Risk Group	RG1
Total power consumption (W)	20
Electrical protection	Class II
Control gear type	LED driver constant current
Dimmable	Yes
Dimming method	DALI
Minimum dimming level (%)	1
LED Flickering Rate	Ultra low (5% or less)
Housing colour	RAL 9003 - Signal white
IP rating	IP44/20
IK rating	IK07
Product EAN number	5410288305431

INSAVER SLIM SQUARE 200

Insaver Slim UGR19 IP44 DALI 200 2500lm 840 Square

0030543

DATA TABLE

General data

Product name	Insaver Slim UGR19 IP44 DALI 200 2500lm 840 Square
Technology	LED
Cap/Base	N/A
Housing	Aluminium
Mount	Ceiling recessed mounting
General application	Hospitality, Office, Retail
Operating temperature range (°C)	-10°C...+40°C
Performance ambient temperature Tq (°C)	40
ETIM Class	EC001744
E-number FI	4278544
Warranty	5 years

Optical data

Fixture luminous flux (lm)	2500
Luminaire efficacy (lm/W)	125
Colour temperature (K)	4000
Correlated colour temperature range (K)	4000 - 4000
Colour Code	840
Light colour	Neutral White
CRI (Ra)	80
Colour Variation Initial (SDCM)	SDCM3
Beam Angle (°)	70
Beam Angle (°)	NA
Distribution type	Symmetric
Glare control	< 19
Photobiological Risk Group	RG1

Electrical data

Total power consumption (W)	20
Mains voltage (V)	220-240V
Lamp power factor	0.94
THD (at 230 V, 50 Hz, full load, at 100% dimming level) xx.x %	7
Electrical protection	Class II
Control gear type	LED driver constant current
Dimmable	Yes
Dimming method	DALI
Minimum dimming level (%)	1
Drive current (mA)	600
Inrush Current (A)	25
Inrush Duration (µs)	141
Glow Wire Test (°C)	850
Energy Efficiency Class (A->G) of contained light source	D
Nominal Frequency (Hz)	50/60Hz

INSAVER SLIM SQUARE 200

Insaver Slim UGR19 IP44 DALI 200 2500lm 840 Square

0030543

LED Flickering Rate	Ultra low (5% or less)
Max. Luminaires per 10A C Breaker	31
Max. Luminaires per 13A C Breaker	40
Max. Luminaires per 16A C Breaker	51
Max. Luminaires per 20A C Breaker	66
Max. Luminaires per 10A B Breaker	19
Max. Luminaires per 13A B Breaker	24
Max. Luminaires per 16A B Breaker	31
Max. Luminaires per 20A B Breaker	40

Lifetime data

Lifespan L70 B50	100000
Lifespan L70 B20	90000
Lifespan L70 B10	90000
Lifespan L80 B50	90000
Lifespan L80 B20	88000
Lifespan L80 B10	80000
Lifespan L90 B50	49000
Lifespan L90 B20	42000
Lifespan L90 B10	39000

Physical data

Housing colour	RAL 9003 - Signal white
IP rating	IP44/20
IK rating	IK07
Diffuser finish	Other
Diffuser material	None
Reflector finish	Silver
Nominal Product Length (mm)	217
Nominal Product Width (mm)	217
Nominal Product Height (mm)	60
Cutout Dimensions (W x L in mm or Diameter in mm)	200
Weight (kg)	0.8
Recessed Depth (mm)	150

Packaging

Single packaging type	Carton
Product EAN number	5410288305431
Packaging single length / height (cm)	25.0
Packaging single width (cm)	25.0
Packaging single depth (cm)	8.0
DUN14 (outer)	15410288305438
Units per outer package	12
Packaging outer length / height (cm)	51.5
Packaging outer width (cm)	51.5
Packaging outer depth (cm)	26.0

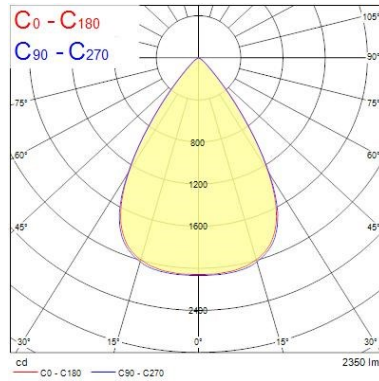
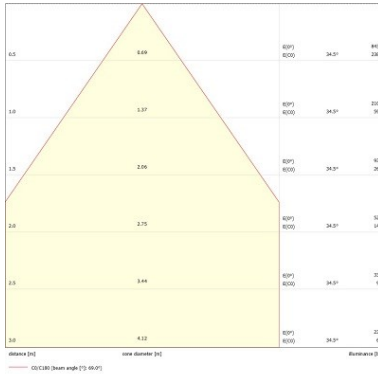
Safety data

INSAVER SLIM SQUARE 200

Insaver Slim UGR19 IP44 DALI 200 2500lm 840 Square
0030543

Optimal operating condition (°C) -10-40

PHOTOMETRY



TECHNICAL DRAWINGS

