

INSAVER SLIM 150

Insaver Slim UGR19 IP44 DALI 150 1150lm 830

0030534



Product features

- Insaver Slim is a ceiling recessed LED downlight (IP44 from the front), Die-cast aluminium body, loop in loop out connector for quick installation, Dimmable DALI driver of TRIDONIC (LCA 17W 250-700mA one4all SR PRE 28000670), 9.5W; 1150lm; 121lm/W; 3000K; UGR <19 with shallow product depth 50mm. Meets TP(a) requirements.



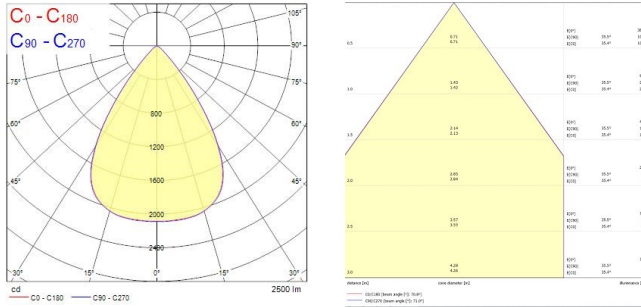
PRODUCT OVERVIEW

Product name	Insaver Slim UGR19 IP44 DALI 150 1150lm 830
Technology	LED
Cap/Base	N/A
Housing	Aluminium
Mount	Ceiling recessed mounting
General application	Hospitality, Office, Retail
ETIM Class	EC001744
E-number FI	4278511
Warranty	5 years
Fixture luminous flux (lm)	1150
Luminaire efficacy (lm/W)	121
Colour temperature (K)	3000
Colour Code	830
Light colour	Warm White
CRI (Ra)	80
Colour Variation Initial (SDCM)	SDCM3
Beam Angle (°)	70
Beam Angle (°)	NA
Glare control	< 19
Photobiological Risk Group	RG1
Total power consumption (W)	9.5
Electrical protection	Class II
Control gear type	LED driver constant current
Dimmable	Yes
Dimming method	DALI
Minimum dimming level (%)	1
LED Flickering Rate	Ultra low (5% or less)
Housing colour	RAL 9003 - Signal white
IP rating	IP44/20
IK rating	IK07
Product EAN number	5410288305349

INSAVER SLIM 150

Insaver Slim UGR19 IP44 DALI 150 1150lm 830
0030534

PHOTOMETRY



TECHNICAL DRAWINGS

