

### Features

- Insaver Slim is a ceiling recessed LED downlight (IP44 from the front), Die-cast aluminium body, loop in loop out connector for quick installation, Dimmable DALI driver of TRIDONIC (LCA 17W 250–700mA one4all SR PRE 28000670), 9.5W; 1200lm; 126lm/W; 4000K; UGR <19 with shallow product depth 50mm. Meets TP(a) requirements.

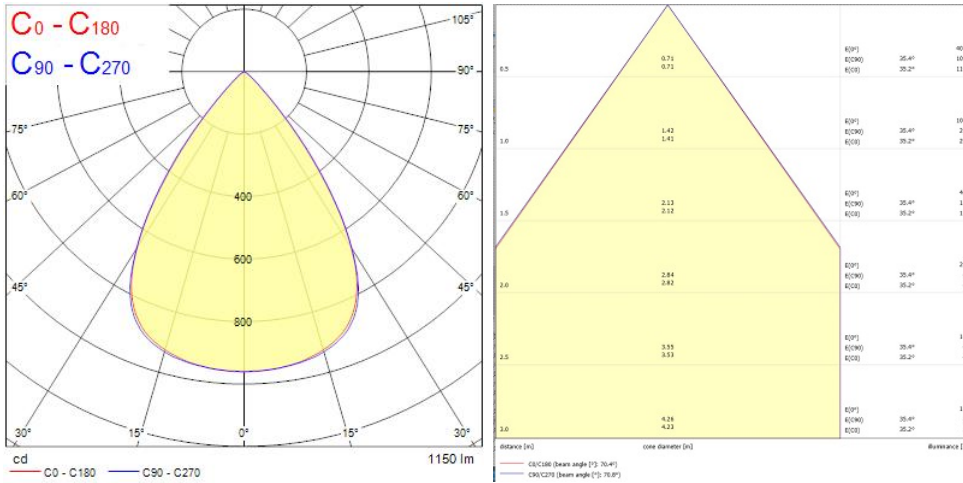
### Product Overview

Product name	Insaver Slim UGR19 IP44 DALI 150 1200lm 840
Technology	LED
Cap/Base	N/A
Housing	Aluminium
Mount	Ceiling recessed mounting
General application	Hospitality, Office, Retail
ETIM Class	EC001744
E-number FI	4278512
Fixture luminous flux (lm)	1200
Luminaire efficacy (lm/W)	126
Colour temperature (K)	4000
Light colour	Neutral White
CRI (Ra)	80
Colour Variation Initial (SDCM)	3
Beam Angle (°)	70
Beam Angle (°)	NA
Glare control	< 19
Photobiological Risk Group	RG1
Total power consumption (W)	9.5
Electrical protection	Class II
Control gear type	LED driver constant current
Dimmable	Yes

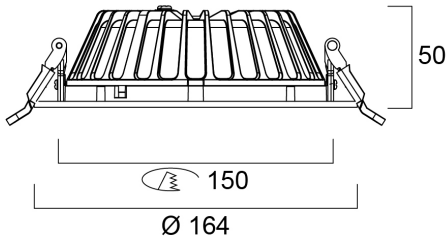
## Insaver Slim UGR19 IP44 DALI 150 1200lm 840 0030535

Minimum dimming level (%)	1
LED Flickering Rate	Ultra low (5% or less)
Housing colour	RAL 9003 - Signal white
IP rating	IP44/20
IK rating	IK07
Product EAN number	5410288305356
Warranty	5 years
Colour Code	840
Dimming method	DALI

### Photometry



## Technical drawings



## Data table

### GENERAL DATA

Product name	Insaver Slim UGR19 IP44 DALI 150 1200lm 840
Technology	LED
Cap/Base	N/A
Housing	Aluminium
Mount	Ceiling recessed mounting
General application	Hospitality, Office, Retail
Operating temperature range (°C)	-20°C...+40°C
Performance ambient temperature Tq (°C)	40
ETIM Class	EC001744
E-number FI	4278512
Warranty	5 years

### OPTICAL DATA

Fixture luminous flux (lm)	1200
Luminaire efficacy (lm/W)	126

## Insaver Slim UGR19 IP44 DALI 150 1200lm 840 0030535

Colour temperature (K)	4000
Colour Code	840
Light colour	Neutral White
CRI (Ra)	80
Colour Variation Initial (SDCM)	3
Beam Angle (°)	70
Beam Angle (°)	NA
Distribution type	Symmetric
Glare control	< 19
Photobiological Risk Group	RG1

### ELECTRICAL DATA

Total power consumption (W)	9.5
Mains voltage (V)	220-240V
Lamp power factor	0.97
THD (at 230 V, 50 Hz, full load, at 100% dimming level) $\leq$ xx.x %	9
Electrical protection	Class II
Control gear required	No
Control gear type	LED driver constant current
Dimmable	Yes
Dimming method	DALI
Minimum dimming level (%)	1
Drive current (mA)	290
Inrush Current (A)	18
Inrush Duration ( $\mu$ s)	140
Glow Wire Test (°C)	850
Energy Efficiency Class (A->G) of contained light source	D
Nominal Frequency (Hz)	50/60Hz
LED Flickering Rate	Ultra low (5% or less)
Max. Luminaires per 10A C Breaker	36
Max. Luminaires per 13A C Breaker	50
Max. Luminaires per 16A C Breaker	60
Max. Luminaires per 20A C Breaker	76

## Insaver Slim UGR19 IP44 DALI 150 1200lm 840 0030535

Max. Luminaires per 10A B Breaker	22
Max. Luminaires per 13A B Breaker	30
Max. Luminaires per 16A B Breaker	36
Max. Luminaires per 20A B Breaker	46

### LIFETIME DATA

Lifespan L70 B50	100000
Lifespan L70 B20	90000
Lifespan L70 B10	90000
Lifespan L80 B50	90000
Lifespan L80 B20	88000
Lifespan L80 B10	80000
Lifespan L90 B50	49000
Lifespan L90 B20	42000
Lifespan L90 B10	39000

### PHYSICAL DATA

Housing colour	RAL 9003 - Signal white
IP rating	IP44/20
IK rating	IK07
Diffuser finish	Other
Diffuser material	None
Reflector finish	Silver
Nominal Product Height (mm)	50
Nominal Product Diameter (mm)	164
Cutout Dimensions (W x L in mm or Diameter in mm)	150
Weight (kg)	0.45
Recessed Depth (mm)	150

### PACKAGING

Single packaging type	Carton
Product EAN number	5410288305356
Packaging single length / height (cm)	17.8

Insaver Slim UGR19 IP44 DALI 150 1200lm 840

**0030535**

Packaging single width (cm)	17.8
Packaging single depth (cm)	7.0
DUN14 (outer)	15410288305353
Units per outer package	20
Packaging outer length / height (cm)	37.0
Packaging outer width (cm)	37.0
Packaging outer depth (cm)	37.0

## SAFETY DATA

Optimal operating condition (°C)	-20-40
Special purpose lamp	No
Dry applications use only	No
Suitable for household illumination	No