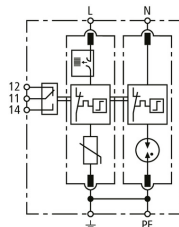


## DG M TN ACI 275 FM (952 220)

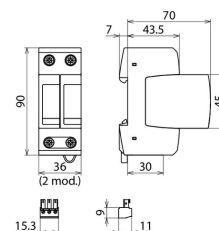
- ACI switch / spark gap combination integrated in the protection module
- Prewired complete unit consisting of a base part and plug-in protection modules
- High reliability due to "Thermo Dynamic Control" SPD monitoring device and ACI technology
- No backup protection device required due to ACI technology
- Smaller connection cross-section of 6 mm<sup>2</sup> always sufficient



Figure without obligation



Basic circuit diagram DG M TN ACI 275 FM



Dimension drawing DG M TN ACI 275 FM

Modular surge arrester with Advanced Circuit Interruption (ACI) for single-phase 230 V TN systems.

| Type  | DG M TN ACI 275 FM  |
|---|---|
| <b>Part No.</b>   | <b>952 220</b>  |
| SPD according to EN 61643-11 / IEC 61643-11                       | type 2 / class II   |
| Energy coordination with terminal equipment (≤ 10 m)              | type 2 + type 3   |
| Nominal a.c. voltage (U <sub>N</sub> )                            | 230 V (50 / 60 Hz)  |
| Max. continuous operating voltage AC [L-PE] (U <sub>C</sub> )     | 275 V (50 / 60 Hz)  |
| Max. continuous operating voltage (a.c.) [N-PE] (U <sub>C</sub> ) | 255 V (50 / 60 Hz)  |
| Nominal discharge current (8/20 μs) (I <sub>n</sub> )             | 20 kA   |
| Voltage protection level [L-PE] / [N-PE] (U <sub>P</sub> )        | ≤ 1.5 V / ≤ 1.5 kV  |
| Response time (t <sub>a</sub> )                                   | ≤ 100 ns  |
| Additional external fuse  | not required  |
| Short-circuit withstand capability (I <sub>sCCR</sub> )           | 25 kA <sub>rms</sub>                                      |
| Temporary overvoltage (TOV) (U <sub>T</sub> ) – Characteristic    | 440 V / 120 min. – withstand                              |
| Leakage current   | no leakage current  |
| Operating temperature range (T <sub>U</sub> )                     | -40 °C ... +80 °C   |
| Operating state / fault indication                                | green / red   |
| Number of ports   | 1   |
| Cross-sectional area (min.)                                       | 1.5 mm <sup>2</sup> solid / flexible                      |
| Cross-sectional area (max.)                                       | 35 mm <sup>2</sup> stranded / 25 mm <sup>2</sup> flexible |
| For mounting on   | 35 mm DIN rails acc. to EN 60715                          |
| Enclosure material  | thermoplastic, red, UL 94 V-0                             |
| Place of installation   | indoor installation                                       |
| Degree of protection  | IP 20   |
| Capacity  | 2 module(s), DIN 43880                                    |
| Approvals   | KEMA  |
| Type of remote signalling contact                                 | changeover contact  |
| Switching capacity (a.c.)   | 250 V / 0.5 A   |
| Switching capacity (d.c.)   | 250 V / 0.1 A; 125 V / 0.2 A; 75 V / 0.5 A                |
| Cross-sectional area for remote signalling terminals              | max. 1.5 mm <sup>2</sup> solid / flexible                 |
| Weight  | 241 g   |
| Customs tariff number   | 85363030  |
| GTIN  | 4013364376656   |
| PU  | 1 Stk   |

We reserve the right to introduce changes in performance, configuration and technology, dimensions, weights and materials in the course of technical progress. The figures are shown without obligation.