

Ex horns and sirens / Ex-Signal Horn 761

Ex Signal horn WM Contin. tone 42VAC BK



Part No.: 761.000.66



MECHANICAL DATA

Length	104 mm
Width	178 mm
Height	232 mm
Materials	PC
Housing colour	Black
Protection category	IP65
Connection	Spring-type terminal
cross-sectional area maximum	2,50mm ² / 14AWG
Cable entry	Screwed cable gland
Cable entry minimum	d = 7 mm
Cable entry maximum	d = 11 mm
Tension relief	Present (conforms to VDE)
Type of fixing	Wall mounting
Working temperature minimum	-40°C
Working temperature maximum	+50°C
Weight with packaging	1495 g
Product weight	1369 g

ELECTRICAL DATA

Operating voltage	42V
Operating voltage type	AC
Operating voltage frequency	50Hz
Operating voltage tolerance	+/- 10%
Rated operational voltage	42 VAC
Rated operational current	220 mA
Rated inrush current	<10A
Protection class	Protection class 2
Pollution degree	3

ACUSTICAL DATA

Volume (max) at 1m distance	105,0 dB (A)
Acoustic signal image	Continuous tone
Audio frequency	100 Hz
Acoustic service life	250 h minimum

APPROVAL DATA

Conforms with CE	yes
WEEE	yes
Conform with ATEX-directive	yes



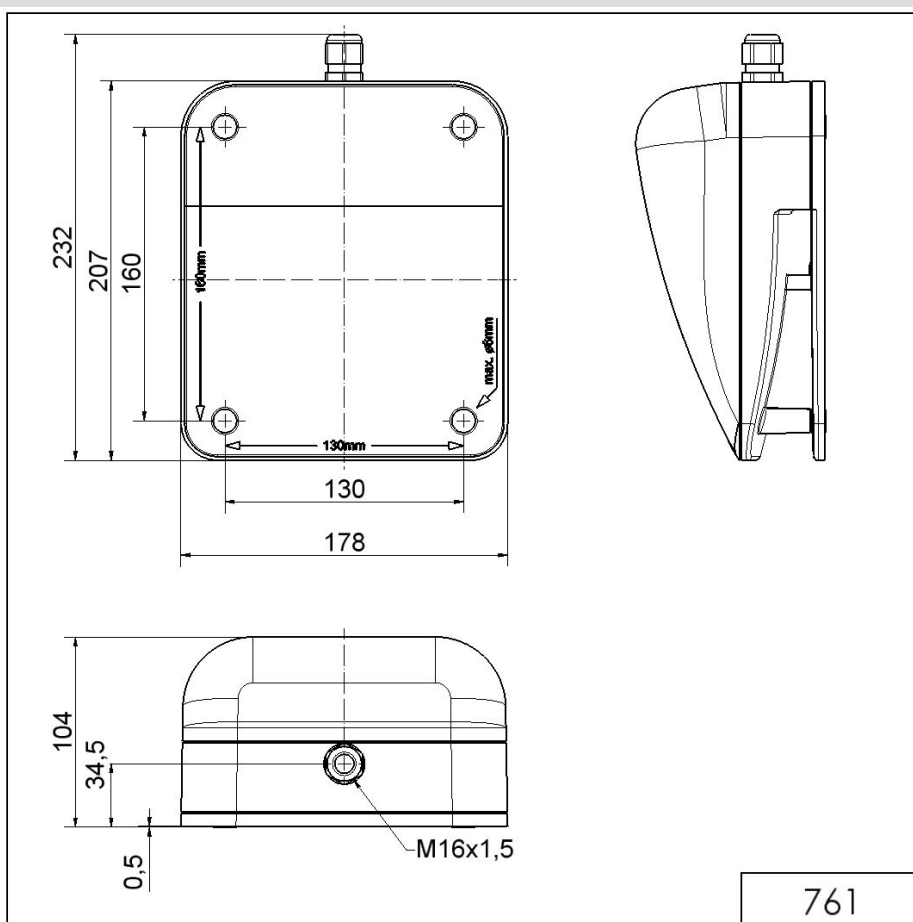
For additional installation and mounting information, refer to the appropriate user guide at www.werma.com. This printed copy is for information only and is subject to alteration.


Ex horns and sirens / Ex-Signal Horn 761

Ex Signal horn WM Contin. tone 42VAC BK

ATEX-guidance	2014/34/EU
Ex approval number	BVS 03 ATEX E 118 X
Ex label for gas	II2G Ex eb mb IIC T5 Gb
Ex label for dust	II2D Ex tb IIIC T70°C Db
Safety information	Observe instruction-leaflet!
Conforms with CCC	no
Conforms with FCC	no
Conforms with IC	No
Conforms with AS-I	no
ICAO Certification	No
Conforms with GL	no
Conforms with RoHS CN	no
Conforms with VdS	no

DRAWING



 For additional installation and mounting information, refer to the appropriate user guide at www.werma.com. This printed copy is for information only and is subject to alteration.