

Installation instructions Fresh 100 / 100dB

- ① Use a hole cutter, min $\varnothing 100\text{mm}$ (Fresh 100) or min $\varnothing 150\text{mm}$ (Fresh 100-dB) and drill from inside to out so that the pipe will be slightly angled down towards the outside.

For walls thicker than 320 mm an additional pipe module must be used (453275 extra wall sleeve).

For walls less than 320 mm thick, the pipe should be cut to the correct length.

The sound dampening pipe can be easily cut to the required length using a knife or saw.

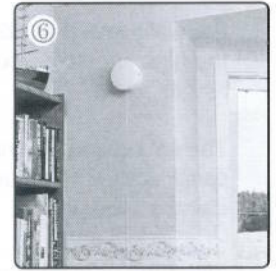
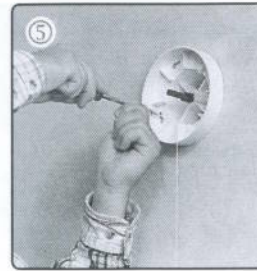
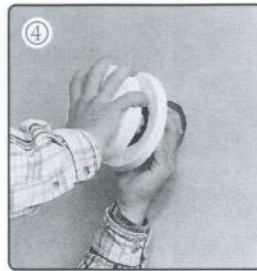
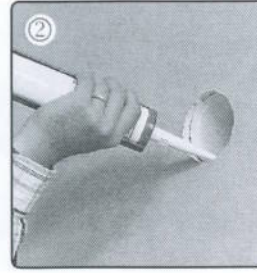
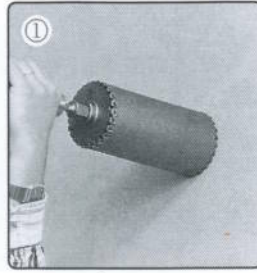
- ② Insert the pipe and seal the outer gap with the wall at both ends using a silicone sealant.

- ③ Nail or screw the external wall grille in place on the outside wall.

- ④ Open the vent. Press the vent cover in and turn it clock wise. Remove the filter holder and filter.

- ⑤ Screw the vent housing in place with 4 screws.

- ⑥ Replace the filter and filter holder. Press the vent cover in place and turn it anti-clockwise. Installation of the vent is now complete.

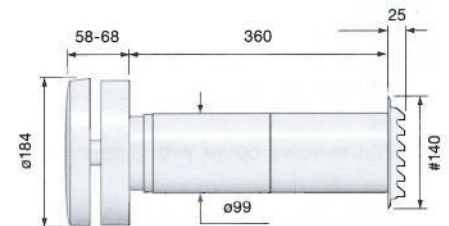


MAINTENANCE

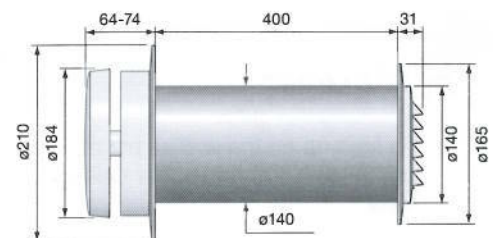
On the inside the vent is fitted with a filter that should be cleaned in water (add washingup liquid if necessary) once or twice per year. Set the vent in the open position. Press in and then turn the vent cover clockwise. Remove the vent cover and filter holder and the filter is accessible.

TO PREVENT THE RISK OF DRAWING NOXIOUS FUMES INTO THE BUILDING THE INLET GRILLE FOR THIS UNIT MUST NOT BE AFFECTED BY A FUEL BURNING APPLIANCE FLUE. UNDER NO CIRCUMSTANCES SHOULD IT BE CLOSER THAN 600mm FROM SUCH A FLUE. THE INSTALLER MUST ENSURE THAT AIR REPLACEMENT IS ADEQUATE FOR ANY FAN OR ANY FUEL BURNING APPLIANCE.

Fresh 100 (mm)



Fresh 100dB (mm)



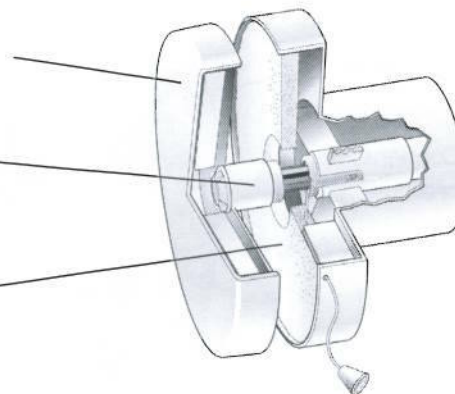
PLACEMENT

- As high up on the wall as possible, but at least 100 mm under ceiling level.
- Above, or directly adjacent to the window.

Vent cover insulates against condensation and noise.

Calibration screw for infinitely variable adjustment of air opening between 0 - 17 mm

Dust and insect filter as standard. Other filters are available as optional extras.



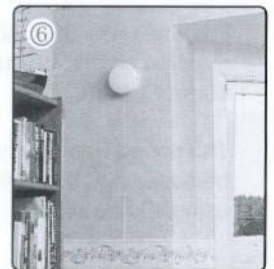
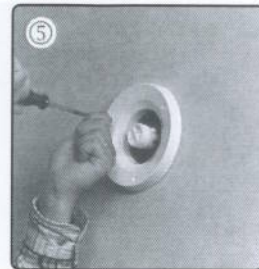
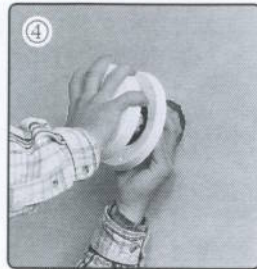
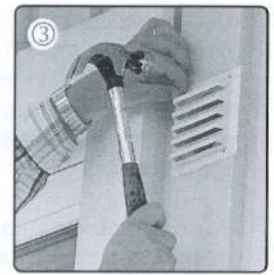
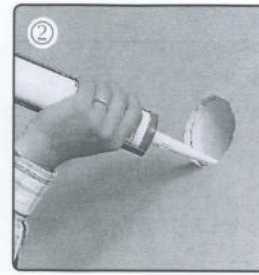
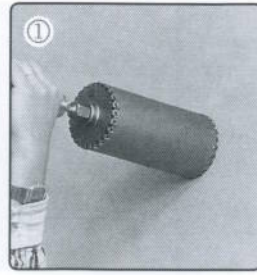
Installation instructions Fresh 100 Thermo/ Thermo dB

- 1 Use a hole cutter, min $\text{Ø}100\text{mm}$ (Fresh 100Thermo) or min $\text{Ø}150\text{mm}$ (Fresh 100Thermo-dB) and drill from inside to out so that the pipe will be slightly angled down towards the outside.

For walls thicker than 320 mm an additional pipe module must be used (453275 extra wall sleeve).

For walls less than 320 mm thick, the pipe should be cut to the correct length.

The sound dampening pipe can be easily cut to the required length using a knife or saw.



- 2 Insert the pipe and seal the outer gap with the wall at both ends using a silicone sealant.
- 3 Nail or screw the external wall grille in place on the outside wall.
- 4 Screw off the valve cover anti-clockwise.
- 5 Fit the valve cover with 3 screws.
- 6 Screw the valve cover clockwise until a clicking sound is heard. The fitting of the valve is now complete.

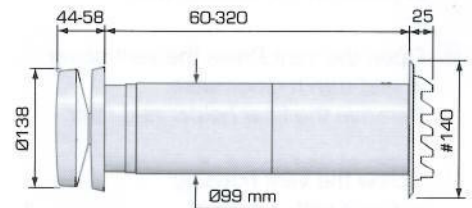
MAINTENANCE

On the inside the vent is fitted with a filter that should be cleaned in water (add washingup liquid if necessary) once or twice per year.

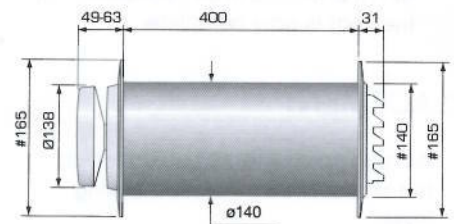
To get access to the filter, screw off the valve cover anti-clockwise.

TO PREVENT THE RISK OF DRAWING NOXIOUS FUMES INTO THE BUILDING THE INLET GRILLE FOR THIS UNIT MUST NOT BE MOUNTED WHERE IT COULD BE AFFECTED BY A FUEL BURNING APPLIANCE FLUE. UNDER NO CIRCUMSTANCES SHOULD IT BE CLOSER THAN 600mm FROM SUCH A FLUE. THE INSTALLER MUST ENSURE THAT AIR REPLACEMENT IS ADEQUATE FOR ANY FAN OR ANY FUEL BURNING APPLIANCE.

Fresh 100 Thermo (mm)



Fresh 100-dB Thermo (mm)



PLACEMENT

- As high up on the wall as possible, but at least 100 mm under ceiling level.
- Above, or directly adjacent to the window.

