

Long Case Axial Fans (LCA)

- Motors protected to IP55
- Motor insulation Class 'F'
- Maximum ambient temp. 54 °C
- Speed controllable via transformer or inverter
- IP55 terminal box
- Adjustable factory set polypropylene impeller
- Suitable for relative humidity levels up to 95% RH
- Manufactured to BS EN ISO 9001
- Performance tested to BS 848 parts 1, 2 and ISO 5801
- 2 Year Guarantee



The Long Case Axial range of fans incorporates manually adjustable pitch impellers which provide a comprehensive range of duties offering high performance and pressure characteristics.

Available in thirteen sizes ranging from 250 to 1250mm diameter and performances from 0.24m³/s to 36m³/s with pressure development up to 1500Pa. The casing is constructed from rolled steel plate complete with flanges and protected with a tough, galvanised finish.

The Long Case Axial Fan range has a number of accessories available which include: Axial Ancillary Pack, Attenuators, Mounting Feet, Wire Inlet Guard, Coupling Flange and Speed Controllers.

Sound Levels

All measurements of the sound that the fans generate have been taken strictly in accordance with BS 848 part 2, test method 1. Published sound power level spectra figures are dBW with a reference of 10⁻¹² Watts (1 Pico watt).

Motors

The motors are specially selected for optimum performance and efficiency. Ball bearings are greased for life and allow the fan to be installed at any angle. Suitable for continuous operation in relative humidity up to 95% Motors are protected to IP55 against dust and water jets complying with BS EN 60529. They have ribbed aluminium body castings for efficient cooling. Motor insulation is Class 'F' (from -35 °C to +54 °C). Star/delta starting is recommended for motor output above 7.5kW.

Axial Impellers

Polypropylene impeller blades are clamped in a split cast aluminium hub, with a keywayed mild steel insert enabling positive locking of the impeller assembly to the motor shaft, this also allows manual adjustment of the pitch angle giving a wide selection of performance details.

Terminal Box

Rated to IP55, protected against dust and water jets from any angle, allowing outside applications.

Declaration of Conformity

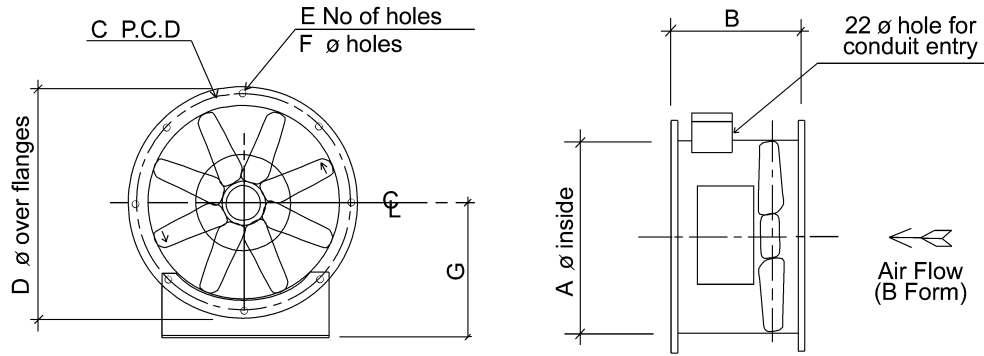
All models are supplied with an EC Declaration of Conformity as defined by the EC Council Directive on Machinery 98/37/EC. This declares that all the models, on the basis of their design and construction in the form brought onto the market by Vent-Axia, are in accordance with the Machinery Directive.

Electrical

Single phase 220-240V 50 Hz permanent capacitor. Three phase 380-415V 50Hz. Protection of the motor must be provided by an overload current sensing device (eg. D.O.L Starter or Star/Delta starter where appropriate) or the guarantee will be invalidated. All models are available with 4 pole motors for 250 up to 1250mm diameter with additional 2 pole motors available from 250 up to 630mm diameter.

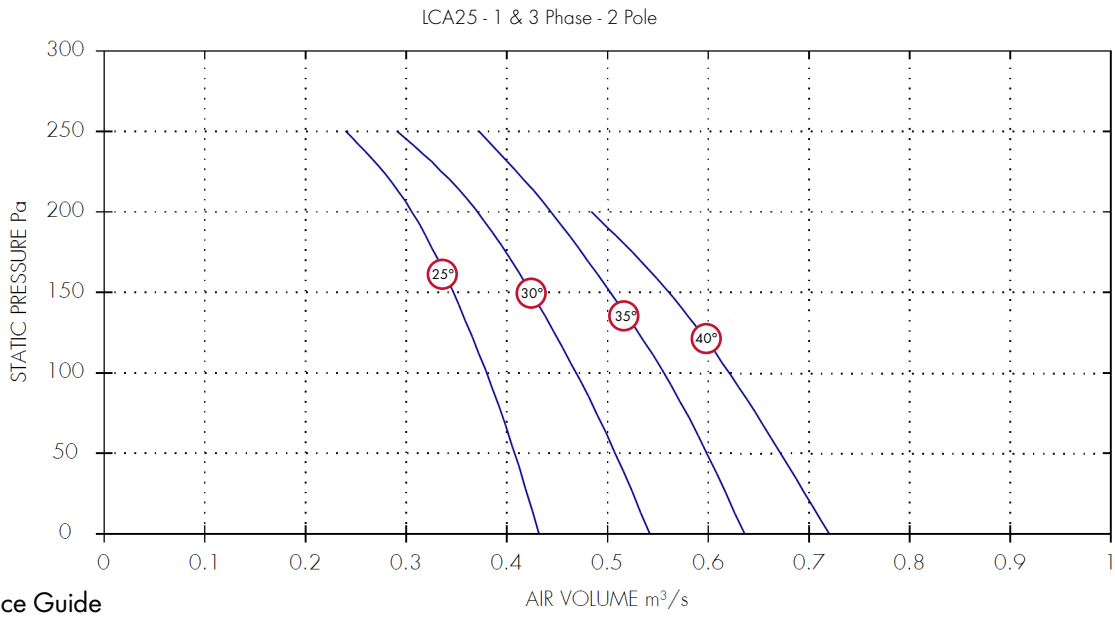
All units are manufactured to order with 10 working days delivery (uk mainland).

Fan Dimensions (mm)



Model No.	Pole	Phase	Pitch Angle	A	B	C	D	E	F	G	Max Weight kg
LCA25	2 & 4	1 & 3	25-40	250	300	295	335	8	10	200	15
LCA31	2 & 4	1 & 3	10-38	315	420	355	385	8	10	224	23
LCA35	2 & 4	1 & 3	10-38	355	420	395	425	8	10	250	25
LCA40	2 & 4	1 & 3	10-38	400	435	450	480	8	12	280	38
LCA45	2 & 4	1 & 3	10-40	450	435	500	530	8	12	315	49
LCA50	2	3	10-31	500	565	560	590	12	12	315	86
LCA50	2	3	32-40	500	565	560	590	12	12	315	86
LCA50	4	1 & 3	10-40	500	565	560	590	12	12	315	86
LCA56	2	3	10-15	560	565	620	650	12	12	355	94
LCA56	2	3	16-24	560	565	620	650	12	12	355	94
LCA56	4	1 & 3	10-40	560	565	620	650	12	12	355	94
LCA63	2	3	10-22	630	565	690	720	12	12	400	96
LCA63	4	1	10-26	630	565	690	720	12	12	400	96
LCA63	4	3	10-40	630	565	690	720	12	12	400	96
LCA71	4	3	10-36	710	565	770	800	16	12	435	92
LCA80	4	3	10-20	800	565	860	890	16	12	480	131
LCA80	4	3	21-34	800	565	860	890	16	12	480	131
LCA90	4	3	10-26	900	565	970	1038	16	14	535	214
LCA90	4	3	28-40	900	700	970	1038	16	14	535	214
LCA100	4	3	10-22	1000	565	1070	1138	16	14	555	274
LCA100	4	3	24-32	1000	700	1070	1138	16	14	555	274
LCA100	4	3	34-40	1000	790	1070	1138	16	14	555	274
LCA125	4	3	20-34	1250	950	1320	1390	20	15	868	903

Performance Curves



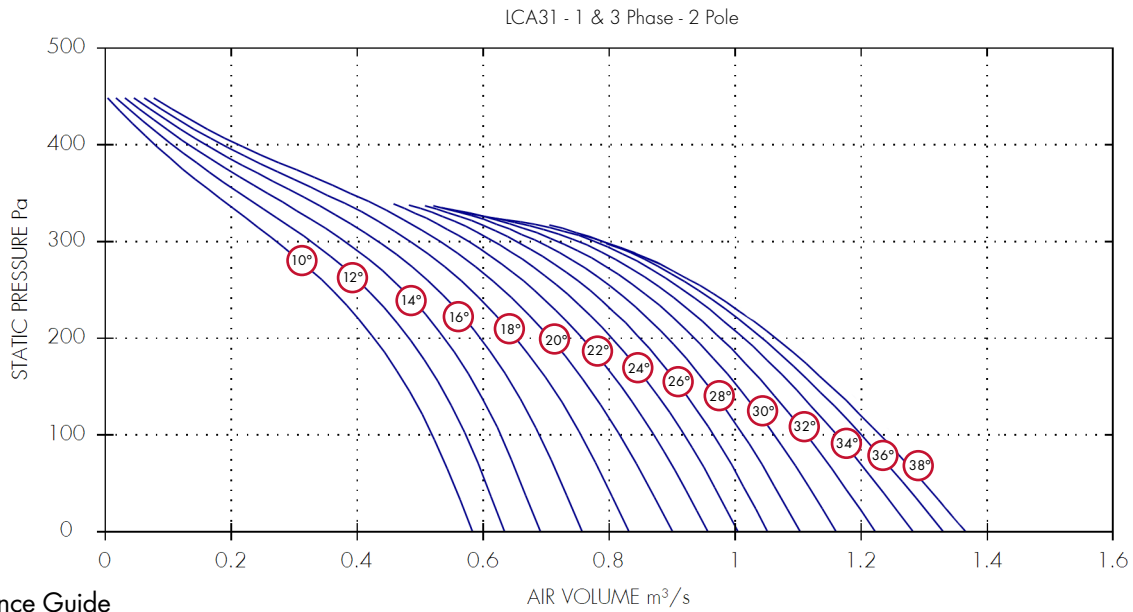
Performance Guide

Dia.	1 Phase		3 Phase		IP	Curve	m ³ /s at Pa						Motor	dBA @3m
	Stock Ref	Stock Ref	Poles	rpm			Rating	Ref	0	50	100	150		
250	LCA251225	LCA253225	2	2800	IP55	25°	0.43	0.41	0.38	0.35	0.31	0.24	0.37	58
250	LCA251230	LCA253230	2	2800	IP55	30°	0.54	0.51	0.47	0.42	0.37	0.29	0.37	57
250	LCA251235	LCA253235	2	2800	IP55	35°	0.64	0.6	0.56	0.5	0.44	0.37	0.37	58
250	LCA251240	LCA253240	2	2800	IP55	40°	0.72	0.67	0.62	0.56	0.48		0.37	59

Sound Power Level Spectra dB (ref 10⁻¹² Watts)

Dia.	1 Phase Stock		3 Phase		Spectrum	63	125	250	500	1k	2k	4k	8k	dBA @ 3m
	Stock Ref	Stock Ref	Poles	rpm										
250	LCA251225	LCA253225	2	2800	Inlet/Outlet	73	74	82	75	73	70	67	64	58
250	LCA251230	LCA253230	2	2800	Inlet/Outlet	72	73	81	74	72	69	66	63	57
250	LCA251235	LCA253235	2	2800	Inlet/Outlet	73	74	82	75	73	70	67	64	58
250	LCA251240	LCA253240	2	2800	Inlet/Outlet	74	75	83	76	74	71	68	65	59

Performance Curves



Performance Guide

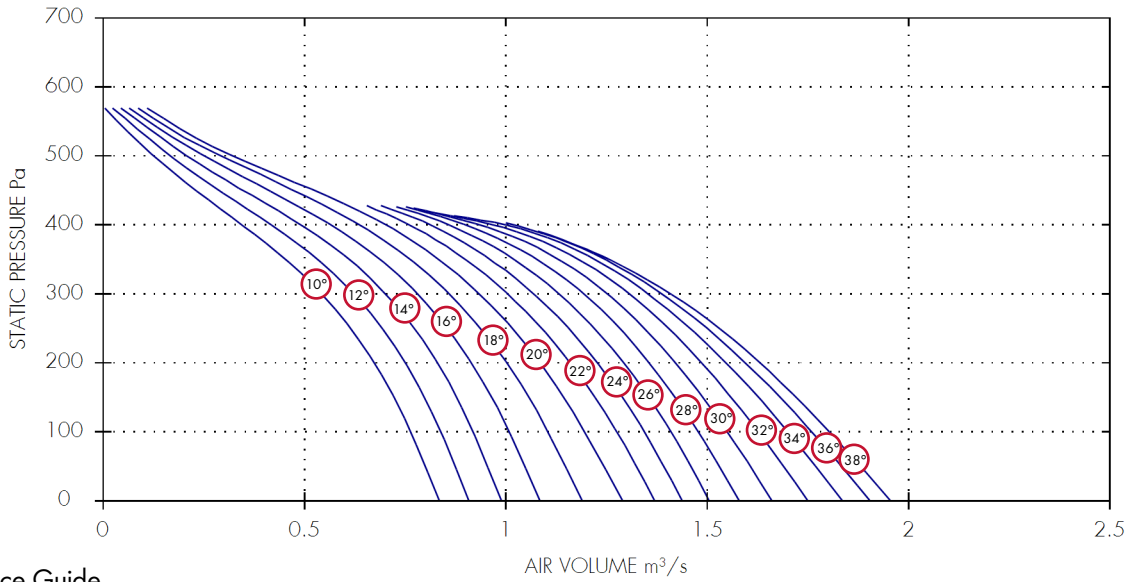
Dia.	1 Phase		3 Phase		Poles	rpm	IP Rating	Curve Ref	m ³ /s at Pa					Motor kW	dBA @3m
	Stock Ref	Stock Ref	0	100					200	300	400				
315	LCA311210	LCA313210	2	2800	IP55	10°	0.58	0.52	0.43	0.27	0.08	0.37	65		
315	LCA311212	LCA313212	2	2800	IP55	12°	0.63	0.57	0.48	0.33	0.11	0.37	65		
315	LCA311214	LCA313214	2	2800	IP55	14°	0.69	0.63	0.54	0.38	0.13	0.37	65		
315	LCA311216	LCA313216	2	2800	IP55	16°	0.76	0.69	0.6	0.43	0.16	0.37	63		
315	LCA311218	LCA313218	2	2800	IP55	18°	0.83	0.76	0.65	0.48	0.19	0.37	61		
315	LCA311220	LCA313220	2	2800	IP55	20°	0.9	0.82	0.71	0.53	0.21	0.37	61		
315	LCA311222	LCA313222	2	2800	IP55	22°	0.96	0.87	0.76	0.58		0.37	62		
315	LCA311224	LCA313224	2	2800	IP55	24°	1	0.92	0.8	0.62		0.37	63		
315	LCA311226	LCA313226	2	2800	IP55	26°	1.05	0.97	0.85	0.65		0.55	63		
315	LCA311228	LCA313228	2	2800	IP55	28°	1.1	1.01	0.89	0.69		0.55	63		
315	LCA311230	LCA313230	2	2800	IP55	30°	1.16	1.06	0.94	0.72		0.55	64		
315	LCA311232	LCA313232	2	2800	IP55	32°	1.22	1.11	0.98	0.75		0.55	66		
315	LCA311234	LCA313234	2	2800	IP55	34°	1.28	1.16	1.01	0.78		0.75	66		
315	LCA311236	LCA313236	2	2800	IP55	36°	1.33	1.2	1.04	0.79		0.75	66		
315	LCA311238	LCA313238	2	2800	IP55	38°	1.37	1.23	1.06	0.79		0.75	66		

Sound Power Level Spectra dB (ref 10⁻¹² Watts)

Dia.	1 Phase		3 Phase		Poles	Spectrum	dB @ 3m									
	Stock Ref	Stock Ref	63	125			250	500	1k	2k	4k	8k	dBA @ 3m			
315	LCA311210	LCA313210	2	Inlet/Outlet	83	82	82	79	81	80	76	68	65			
315	LCA311212	LCA313212	2	Inlet/Outlet	83	82	82	79	81	80	76	68	65			
315	LCA311214	LCA313214	2	Inlet/Outlet	83	82	82	79	81	80	76	68	65			
315	LCA311216	LCA313216	2	Inlet/Outlet	81	80	80	77	79	78	74	66	63			
315	LCA311218	LCA313218	2	Inlet/Outlet	79	78	78	75	77	76	72	64	61			
315	LCA311220	LCA313220	2	Inlet/Outlet	79	78	78	75	77	76	72	64	61			
315	LCA311222	LCA313222	2	Inlet/Outlet	80	79	79	76	78	77	73	65	62			
315	LCA311224	LCA313224	2	Inlet/Outlet	81	80	80	77	79	78	74	66	63			
315	LCA311226	LCA313226	2	Inlet/Outlet	81	80	80	77	79	78	74	66	63			
315	LCA311228	LCA313228	2	Inlet/Outlet	81	80	80	77	79	78	74	66	63			
315	LCA311230	LCA313230	2	Inlet/Outlet	82	81	81	78	80	79	75	67	64			
315	LCA311232	LCA313232	2	Inlet/Outlet	84	83	83	80	82	81	77	69	66			
315	LCA311234	LCA313234	2	Inlet/Outlet	84	83	83	80	82	81	77	69	66			
315	LCA311236	LCA313236	2	Inlet/Outlet	84	83	83	80	82	81	77	69	66			
315	LCA311238	LCA313238	2	Inlet/Outlet	84	83	83	80	82	81	77	69	66			

Performance Curves

LCA35 - 1 & 3 Phase - 2 Pole



Performance Guide

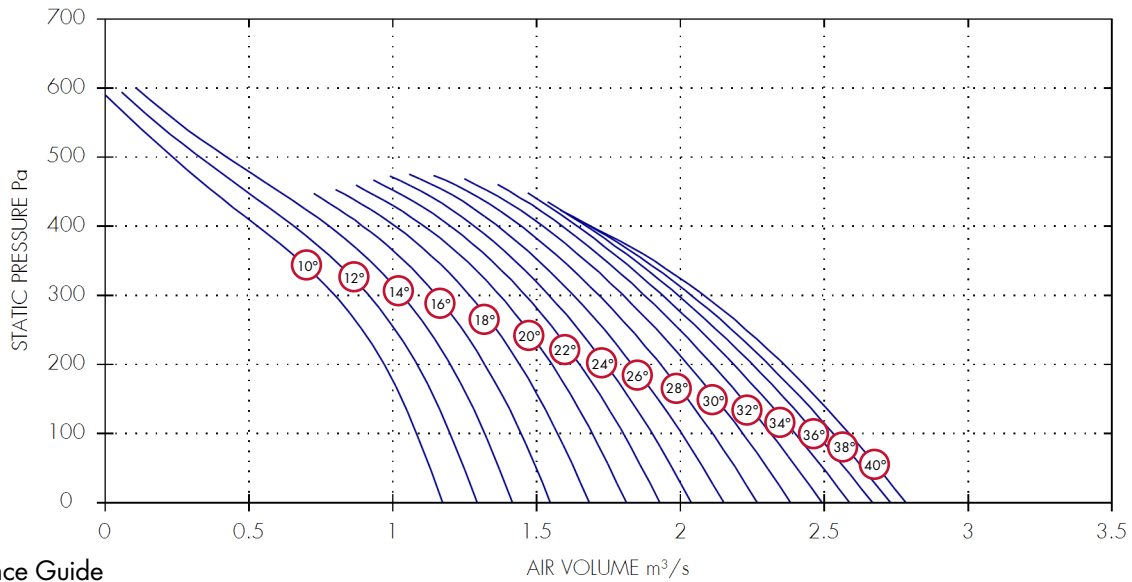
Dia.	1 Phase		3 Phase		IP Rating	Curve Ref	m³/s at Pa						Motor kW	dBA @3m
	Stock Ref	Stock Ref	Poles	rpm			0	100	200	300	400	500		
355	LCA351210	LCA353210	2	2800	IP55	10°	0.84	0.76	0.67	0.54	0.34	0.13	0.37	65
355	LCA351212	LCA353212	2	2800	IP55	12°	0.91	0.84	0.75	0.62	0.42	0.17	0.37	66
355	LCA351214	LCA353214	2	2800	IP55	14°	0.99	0.92	0.83	0.7	0.49	0.21	0.55	66
355	LCA351216	LCA353216	2	2800	IP55	16°	1.08	1.01	0.92	0.78	0.56	0.25	0.55	66
355	LCA351218	LCA353218	2	2800	IP55	18°	1.19	1.1	1	0.86	0.64	0.29	0.55	66
355	LCA351220	LCA353220	2	2800	IP55	20°	1.29	1.2	1.09	0.93	0.7	0.32	0.55	66
355	LCA351222	LCA353222	2	2800	IP55	22°	1.37	1.28	1.16	1	0.76		0.75	61
355	LCA351224	LCA353224	2	2800	IP55	24°	1.44	1.34	1.23	1.07	0.81		0.75	62
355	LCA351226	LCA353226	2	2800	IP55	26°	1.51	1.41	1.29	1.13	0.86		0.75	63
355	LCA351228	LCA353228	2	2800	IP55	28°	1.58	1.48	1.36	1.19	0.9		1.1	63
355	LCA351230	LCA353230	2	2800	IP55	30°	1.66	1.55	1.42	1.25	0.93		1.1	64
355	LCA351232	LCA353232	2	2800	IP55	32°	1.75	1.63	1.49	1.31	0.97		1.1	64
355	LCA351234	LCA353234	2	2800	IP55	34°	1.84	1.7	1.55	1.35	1		1.1	64
355	LCA351236	LCA353236	2	2800	IP55	36°	1.9	1.76	1.59	1.39	1.02		1.5	64
355	LCA351238	LCA353238	2	2800	IP55	38°	1.96	1.8	1.63	1.41			1.5	64

Sound Power Level Spectra dB (ref 10⁻¹² Watts)

Dia.	1 Phase		3 Phase		Spectrum	dB @ 3m							
	Stock Ref	Stock Ref	Poles			63	125	250	500	1k	2k	4k	8k
355	LCA351210	LCA353210	2	Inlet/Outlet	83	82	82	79	81	80	76	68	65
355	LCA351212	LCA353212	2	Inlet/Outlet	84	83	83	80	82	81	77	69	66
355	LCA351214	LCA353214	2	Inlet/Outlet	84	83	83	80	82	81	77	69	66
355	LCA351216	LCA353216	2	Inlet/Outlet	84	83	83	80	82	81	77	69	66
355	LCA351218	LCA353218	2	Inlet/Outlet	84	83	83	80	82	81	77	69	66
355	LCA351220	LCA353220	2	Inlet/Outlet	84	83	83	80	82	81	77	69	66
355	LCA351222	LCA353222	2	Inlet/Outlet	79	78	78	75	77	76	72	64	61
355	LCA351224	LCA353224	2	Inlet/Outlet	80	79	79	76	78	77	73	65	62
355	LCA351226	LCA353226	2	Inlet/Outlet	81	80	80	77	79	78	74	66	63
355	LCA351228	LCA353228	2	Inlet/Outlet	81	80	80	77	79	78	74	66	63
355	LCA351230	LCA353230	2	Inlet/Outlet	82	81	81	78	80	79	75	67	64
355	LCA351232	LCA353232	2	Inlet/Outlet	82	81	81	78	80	79	75	67	64
355	LCA351234	LCA353234	2	Inlet/Outlet	82	81	81	78	80	79	75	67	64
355	LCA351236	LCA353236	2	Inlet/Outlet	82	81	81	78	80	79	75	67	64
355	LCA351238	LCA353238	2	Inlet/Outlet	82	81	81	78	80	79	75	67	64

Performance Curves

LCA40 - 1 & 3 Phase - 2 Pole



Performance Guide

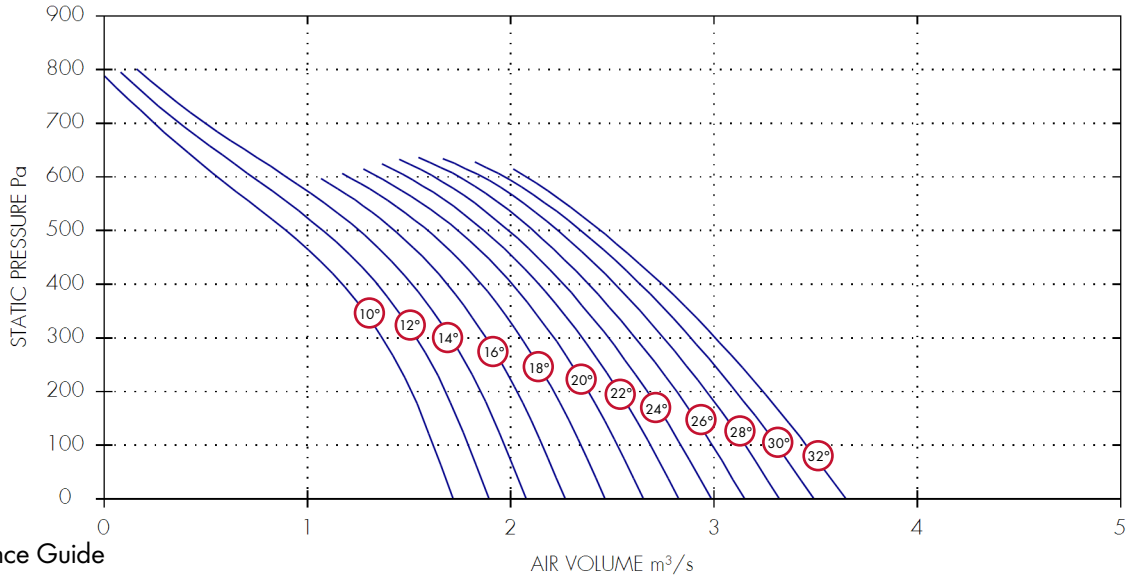
Dia.	1 Phase		3 Phase		IP	Curve	m³/s at Pa						Motor kW	dBA @3m
	Stock Ref	Stock Ref	Poles	rpm			Rating	Ref	0	100	200	300		
400	LCA401210	LCA403210	2	2800	IP55	10°	1.17	1.08	0.97	0.8	0.53	0.23	0.55	71
400	LCA401212	LCA403212	2	2800	IP55	12°	1.29	1.2	1.09	0.92	0.66	0.33	0.55	71
400	LCA401214	LCA403214	2	2800	IP55	14°	1.42	1.32	1.2	1.03	0.78	0.42	0.75	71
400	LCA401216	LCA403216	2	2800	IP55	16°	1.55	1.45	1.32	1.15	0.9		0.75	71
400	LCA401218	LCA403218	2	2800	IP55	18°	1.68	1.57	1.44	1.27	1.01		0.75	71
400	LCA401220	LCA403220	2	2800	IP55	20°	1.81	1.69	1.55	1.37	1.11		1.1	71
400	LCA401222	LCA403222	2	2800	IP55	22°	1.93	1.8	1.65	1.46	1.2		1.1	66
400	LCA401224	LCA403224	2	2800	IP55	24°	2.04	1.9	1.74	1.54	1.28		1.1	66
400	LCA401226	LCA403226	2	2800	IP55	26°	2.15	2	1.83	1.63	1.37		1.1	67
400	LCA401228	LCA403228	2	2800	IP55	28°	2.27	2.11	1.93	1.72	1.45		1.5	68
400	LCA401230	LCA403230	2	2800	IP55	30°	2.38	2.22	2.03	1.8	1.52		1.5	68
400	LCA401232	LCA403232	2	2800	IP55	32°	2.49	2.31	2.11	1.88	1.59		1.5	68
400	-	LCA403234	2	2800	IP55	34°	2.59	2.4	2.19	1.94	1.64		2.2	67
400	-	LCA403236	2	2800	IP55	36°	2.67	2.47	2.25	1.99	1.67		2.2	66
400	-	LCA403238	2	2800	IP55	38°	2.73	2.53	2.31	2.04	1.69		2.2	66
400	-	LCA403240	2	2800	IP55	40°	2.78	2.59	2.36	2.08	1.69		3	66

Sound Power Level Spectra dB (ref 10⁻¹² Watts)

Dia.	1 Phase Stock Ref		3 Phase Stock Ref		Poles	Spectrum	dB											dBA @ 3m
	63	125	250	500			1k	2k	4k	8k								
400	LCA401210	LCA403210	2	Inlet/Outlet	89	86	89	86	87	84	81	74	71					
400	LCA401212	LCA403212	2	Inlet/Outlet	89	86	89	86	87	84	81	74	71					
400	LCA401214	LCA403214	2	Inlet/Outlet	89	86	89	86	87	84	81	74	71					
400	LCA401216	LCA403216	2	Inlet/Outlet	89	86	89	86	87	84	81	74	71					
400	LCA401218	LCA403218	2	Inlet/Outlet	89	86	89	86	87	84	81	74	71					
400	LCA401220	LCA403220	2	Inlet/Outlet	89	86	89	86	87	84	81	74	71					
400	LCA401222	LCA403222	2	Inlet/Outlet	84	81	84	81	82	79	76	69	66					
400	LCA401224	LCA403224	2	Inlet/Outlet	84	81	84	81	82	79	76	69	66					
400	LCA401226	LCA403226	2	Inlet/Outlet	85	82	85	82	83	80	77	70	67					
400	LCA401228	LCA403228	2	Inlet/Outlet	86	83	86	83	84	81	78	71	68					
400	LCA401230	LCA403230	2	Inlet/Outlet	86	83	86	83	84	81	78	71	68					
400	LCA401232	LCA403232	2	Inlet/Outlet	86	83	86	83	84	81	78	71	68					
400	-	LCA403234	2	Inlet/Outlet	85	82	85	82	83	80	77	70	67					
400	-	LCA403236	2	Inlet/Outlet	84	81	84	81	82	79	76	69	66					
400	-	LCA403238	2	Inlet/Outlet	84	81	84	81	82	79	76	69	66					
400	-	LCA403240	2	Inlet/Outlet	84	81	84	81	82	79	76	69	66					

Performance Curves

LCA45 - 3 Phase - 2 Pole



Performance Guide

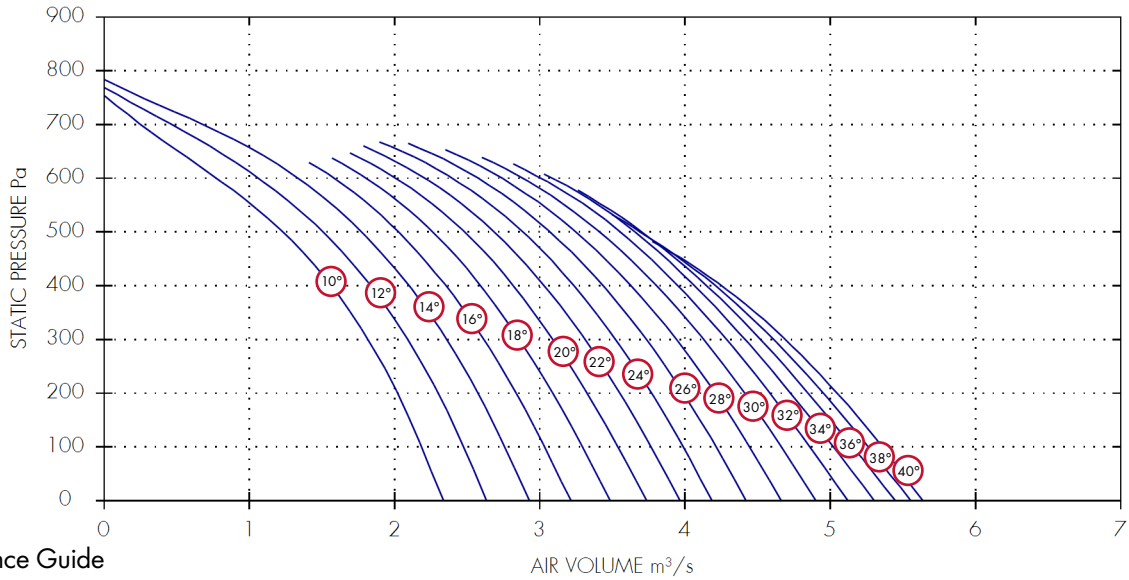
Dia.	3 Phase			IP Rating	Curve Ref	m³/s at Pa							Motor kW	dBA @3m	
	Stock Ref	Poles	rpm			0	100	200	300	400	500	600			700
450	LCA453210	2	2880	IP55	10°	1.72	1.62	1.51	1.37	1.17	0.89	0.56	0.25	1.1	74
450	LCA453212	2	2880	IP55	12°	1.89	1.79	1.68	1.54	1.34	1.08	0.73	0.37	1.1	73
450	LCA453214	2	2880	IP55	14°	2.08	1.97	1.85	1.7	1.51	1.26	0.9	0.5	1.5	72
450	LCA453216	2	2880	IP55	16°	2.27	2.16	2.03	1.88	1.69	1.43			1.5	71
450	LCA453218	2	2880	IP55	18°	2.47	2.35	2.21	2.05	1.86	1.59	1.2		1.5	70
450	LCA453220	2	2880	IP55	20°	2.65	2.53	2.38	2.21	2.01	1.74	1.35		2.2	70
450	LCA453222	2	2880	IP55	22°	2.82	2.69	2.53	2.35	2.14	1.87	1.49		2.2	70
450	LCA453224	2	2880	IP55	24°	2.99	2.84	2.67	2.48	2.26	1.99	1.62		2.2	70
450	LCA453226	2	2880	IP55	26°	3.15	2.99	2.82	2.61	2.38	2.11	1.75		2.2	70
450	LCA453228	2	2880	IP55	28°	3.32	3.15	2.96	2.75	2.51	2.23	1.86		3	70
450	LCA453230	2	2880	IP55	30°	3.49	3.31	3.11	2.89	2.64	2.35	1.97		3	70
450	LCA453232	2	2880	IP55	32°	3.65	3.45	3.24	3.01	2.74	2.44	2.08		3	70

Sound Power Level Spectra dB (ref 10⁻¹² Watts)

Dia.	3 Phase			Spectrum	63	125	250	500	1k	2k	4k	8k	dBA @ 3m
	Stock Ref	Poles											
450	LCA453210	2	Inlet/Outlet	92	89	92	89	90	87	84	77	74	
450	LCA453212	2	Inlet/Outlet	91	88	91	88	89	86	83	76	73	
450	LCA453214	2	Inlet/Outlet	90	87	90	87	88	85	82	75	72	
450	LCA453216	2	Inlet/Outlet	89	86	89	86	87	84	81	74	71	
450	LCA453218	2	Inlet/Outlet	88	85	88	85	86	83	80	73	70	
450	LCA453220	2	Inlet/Outlet	88	85	88	85	86	83	80	73	70	
450	LCA453222	2	Inlet/Outlet	88	85	88	85	86	83	80	73	70	
450	LCA453224	2	Inlet/Outlet	88	85	88	85	86	83	80	73	70	
450	LCA453226	2	Inlet/Outlet	88	85	88	85	86	83	80	73	70	
450	LCA453228	2	Inlet/Outlet	88	85	88	85	86	83	80	73	70	
450	LCA453230	2	Inlet/Outlet	88	85	88	85	86	83	80	73	70	
450	LCA453232	2	Inlet/Outlet	88	85	88	85	86	83	80	73	70	

Performance Curves

LCA50 - 3 Phase - 2 Pole



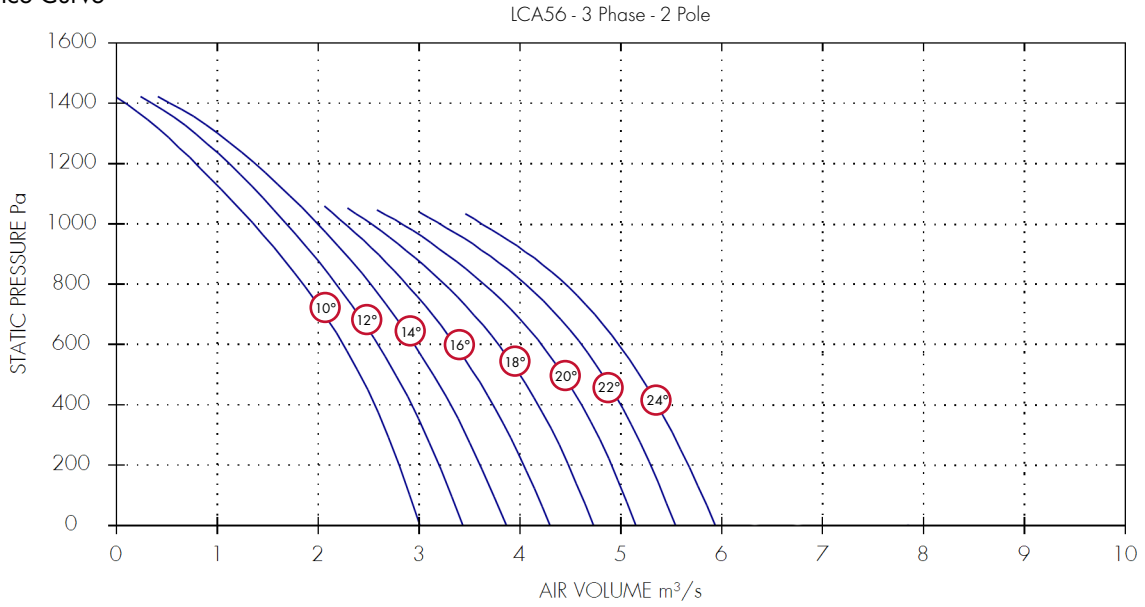
Performance Guide

Dia.	3 Phase		rpm	IP Rating	Curve Ref	m³/s at Pa								Motor kW	dBA @3m
	Stock Ref	Poles				0	100	200	300	400	500	600	700		
500	LCA503210	2	2880	IP55	10°	2.34	2.19	2.02	1.82	1.56	1.23	0.77	0.25	1.5	74
500	LCA503212	2	2880	IP55	12°	2.64	2.48	2.3	2.09	1.83	1.51	1.06	0.46	1.5	73
500	LCA503214	2	2880	IP55	14°	2.93	2.76	2.57	2.36	2.1	1.77	1.33	0.68	2.2	72
500	LCA503216	2	2880	IP55	16°	3.21	3.04	2.84	2.62	2.35	2.03	1.58		2.2	71
500	LCA503218	2	2880	IP55	18°	3.48	3.29	3.09	2.86	2.59	2.26	1.8		2.2	71
500	LCA503220	2	2880	IP55	20°	3.73	3.54	3.33	3.09	2.82	2.48	2.01		3	71
500	LCA503222	2	2880	IP55	22°	3.96	3.77	3.55	3.31	3.03	2.69	2.21		3	71
500	LCA503224	2	2880	IP55	24°	4.19	3.99	3.77	3.52	3.24	2.88	2.4		3	71
500	LCA503226	2	2880	IP55	26°	4.42	4.21	3.99	3.73	3.44	3.07	2.58		4	71
500	LCA503228	2	2880	IP55	28°	4.66	4.45	4.21	3.94	3.63	3.25	2.74		4	72
500	LCA503230	2	2880	IP55	30°	4.9	4.67	4.41	4.13	3.8	3.41	2.88		4	72
500	LCA503232	2	2880	IP55	32°	5.12	4.86	4.58	4.28	3.95	3.55	3		5.5	72
500	LCA503234	2	2880	IP55	34°	5.3	5.02	4.73	4.41	4.07	3.66	3.08		5.5	72
500	LCA503236	2	2880	IP55	36°	5.45	5.16	4.85	4.52	4.15	3.7			5.5	72
500	LCA503238	2	2880	IP55	38°	5.55	5.26	4.95	4.61	4.21	3.69			7.5	72
500	LCA503240	2	2880	IP55	40°	5.64	5.36	5.05	4.69	4.25				7.5	72

Sound Power Level Spectra dB (ref 10⁻¹² Watts)

Dia.	Stock Ref	Poles	Spectrum	63	125	250	500	1k	2k	4k	8k	dBA @ 3m
500	LCA503210	2	Inlet/Outlet	93	84	91	91	91	87	85	78	74
500	LCA503212	2	Inlet/Outlet	92	83	90	90	90	86	84	77	73
500	LCA503214	2	Inlet/Outlet	91	82	89	89	89	85	83	76	72
500	LCA503216	2	Inlet/Outlet	90	81	88	88	88	84	82	75	71
500	LCA503218	2	Inlet/Outlet	90	81	88	88	88	84	82	75	71
500	LCA503220	2	Inlet/Outlet	90	81	88	88	88	84	82	75	71
500	LCA503222	2	Inlet/Outlet	90	81	88	88	88	84	82	75	71
500	LCA503224	2	Inlet/Outlet	90	81	88	88	88	84	82	75	71
500	LCA503226	2	Inlet/Outlet	90	81	88	88	88	84	82	75	71
500	LCA503228	2	Inlet/Outlet	91	82	89	89	89	85	83	76	72
500	LCA503230	2	Inlet/Outlet	91	82	89	89	89	85	83	76	72
500	LCA503232	2	Inlet/Outlet	91	82	89	89	89	85	83	76	72
500	LCA503234	2	Inlet/Outlet	91	82	89	89	89	85	83	76	72
500	LCA503236	2	Inlet/Outlet	91	82	89	89	89	85	83	76	72
500	LCA503238	2	Inlet/Outlet	91	82	89	89	89	85	83	76	72
500	LCA503240	2	Inlet/Outlet	91	82	89	89	89	85	83	76	72

Performance Curve



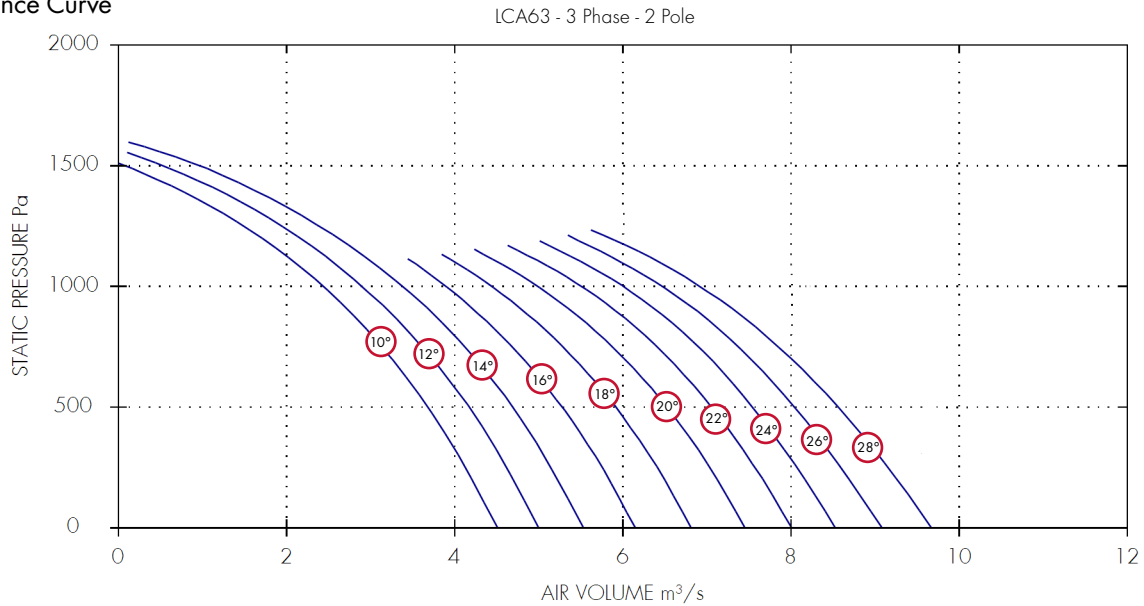
Performance Guide

Dia.	3 Phase		rpm	IP Rating	Curve Ref	m³/s at Pa								Motor kW	dBA @3m
	Stock Ref	Poles				0	200	400	600	800	1000	1200	1400		
560	LCA563210	2	2880	IP55	10°	3.01	2.8	2.56	2.25	1.85	1.36	0.79	0.09	4	79
560	LCA563212	2	2880	IP55	12°	3.44	3.2	2.93	2.59	2.18	1.69	1.11	0.35	4	79
560	LCA563214	2	2880	IP55	14°	3.87	3.61	3.31	2.95	2.52	1.99	1.37	0.53	4	79
560	LCA563216	2	2880	IP55	16°	4.3	4.04	3.73	3.36	2.88	2.27			5.5	79
560	LCA563218	2	2880	IP55	18°	4.73	4.48	4.18	3.79	3.25	2.53			5.5	79
560	LCA563220	2	2880	IP55	20°	5.15	4.91	4.61	4.21	3.65	2.83			7.5	79
560	LCA563222	2	2880	IP55	22°	5.54	5.3	5	4.61	4.05	3.21			7.5	79
560	LCA563224	2	2880	IP55	24°	5.94	5.67	5.36	4.98	4.45	3.62			7.5	79

Sound Power Level Spectra dB (ref 10⁻¹² Watts)

Dia.	3 Phase		Spectrum	dB								dBA @ 3m
	Stock Ref	Poles		63	125	250	500	1k	2k	4k	8k	
560	LCA563210	2	Inlet/Outlet	94	89	97	98	94	91	86	82	79
560	LCA563212	2	Inlet/Outlet	94	89	97	98	94	91	86	82	79
560	LCA563214	2	Inlet/Outlet	94	89	97	98	94	91	86	82	79
560	LCA563216	2	Inlet/Outlet	94	89	97	98	94	91	86	82	79
560	LCA563218	2	Inlet/Outlet	94	89	97	98	94	91	86	82	79
560	LCA563220	2	Inlet/Outlet	94	89	97	98	94	91	86	82	79
560	LCA563222	2	Inlet/Outlet	94	89	97	98	94	91	86	82	79
560	LCA563224	2	Inlet/Outlet	94	89	97	98	94	91	86	82	79
560	LCA563226	2	Inlet/Outlet	94	89	97	98	94	91	86	82	79

Performance Curve



Performance Guide

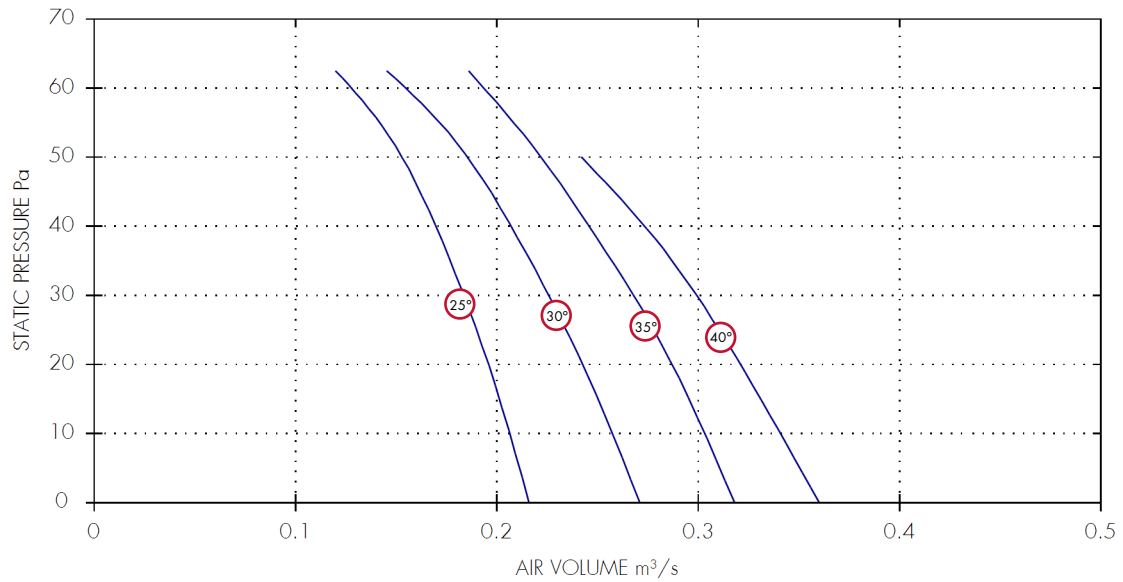
Dia.	3 Phase		rpm	IP Rating	Curve Ref	m ³ /s at Pa								Motor kW	dBA @3m
	Stock Ref	Poles				0	200	400	600	800	1000	1200	1400		
630	LCA633210	2	2940	IP55	10°	4.51	4.2	3.87	3.47	3.01	2.44	1.7	0.72	5.5	84
630	LCA633212	2	2940	IP55	12°	5	4.7	4.36	3.96	3.48	2.9	2.16	1.17	5.5	84
630	LCA633214	2	2940	IP55	14°	5.53	5.22	4.88	4.48	3.98	3.38	2.61	1.6	7.5	84
630	LCA633216	2	2940	IP55	16°	6.15	5.84	5.48	5.06	4.54	3.89			7.5	84
630	LCA633218	2	2940	IP55	18°	6.81	6.5	6.13	5.68	5.14	4.44			11	84
630	LCA633220	2	2940	IP55	20°	7.46	7.12	6.74	6.28	5.72	4.98			11	84
630	LCA633222	2	2940	IP55	22°	8.01	7.67	7.27	6.82	6.25	5.51			11	84
630	LCA633224	2	2940	IP55	24°	8.53	8.17	7.76	7.3	6.74	6			15	84
630	LCA633226	2	2940	IP55	26°	9.08	8.7	8.27	7.79	7.22	6.47	5.41		15	84
630	LCA633228	2	2940	IP55	28°	9.67	9.26	8.81	8.3	7.69	6.92	5.85		15	84

Sound Power Level Spectra dB (ref 10⁻¹² Watts)

Dia.	Stock Ref	Poles	Spectrum	63	125	250	500	1k	2k	4k	8k	dBA @ 3m
630	LCA633210	2	Inlet/Outlet	99	94	102	103	99	96	91	87	84
630	LCA633212	2	Inlet/Outlet	99	94	102	103	99	96	91	87	84
630	LCA633214	2	Inlet/Outlet	99	94	102	103	99	96	91	87	84
630	LCA633216	2	Inlet/Outlet	99	94	102	103	99	96	91	87	84
630	LCA633218	2	Inlet/Outlet	99	94	102	103	99	96	91	87	84
630	LCA633220	2	Inlet/Outlet	99	94	102	103	99	96	91	87	84
630	LCA633222	2	Inlet/Outlet	99	94	102	103	99	96	91	87	84
630	LCA633224	2	Inlet/Outlet	99	94	102	103	99	96	91	87	84
630	LCA633226	2	Inlet/Outlet	99	94	102	103	99	96	91	87	84
630	LCA633228	2	Inlet/Outlet	99	94	102	103	99	96	91	87	84

Performance Curve

LCA25 - 1 & 3 Phase - 4 Pole



Performance Guide

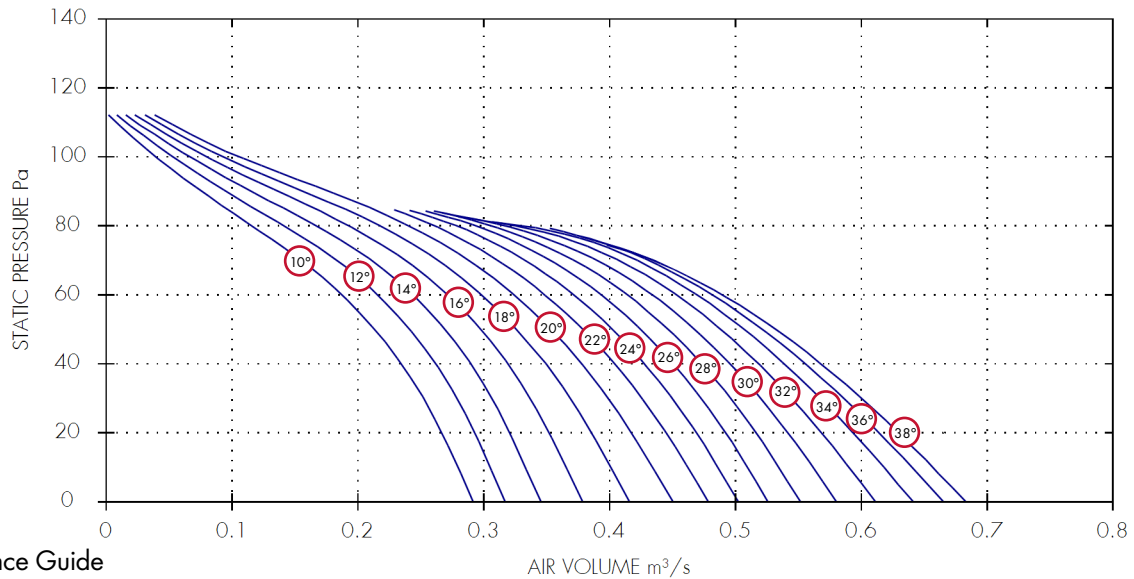
Dia.	1 Phase		3 Phase		IP	Curve Ref	m³/s at Pa							Motor kW	dBA @3m
	Stock Ref	Stock Ref	Poles	rpm			Rating	0	10	20	30	40	50		
250	LCA251425	LCA253425	4	1400	IP55	25°	0.22	0.21	0.2	0.18	0.17	0.15	0.13	0.25	46
250	LCA251430	LCA253430	4	1400	IP55	30°	0.27	0.26	0.24	0.23	0.21	0.19	0.15	0.25	45
250	LCA251435	LCA253435	4	1400	IP55	35°	0.32	0.3	0.29	0.27	0.25	0.22	0.19	0.25	46
250	LCA251440	LCA253440	4	1400	IP55	40°	0.36	0.34	0.32	0.3	0.27	0.24	0.19	0.25	46

Sound Power Level Spectra dB (ref 10⁻¹² Watts)

Dia.	1 Phase		3 Phase		Spectrum	63	125	250	500	1k	2k	4k	8k	dBA @3m
	Stock Ref	Stock Ref	Poles	rpm										
250	LCA251425	LCA253425	4	1400	Inlet/Outlet	61	68	64	63	61	58	55	52	46
250	LCA251430	LCA253430	4	1400	Inlet/Outlet	60	67	63	62	60	57	54	51	45
250	LCA251435	LCA253435	4	1400	Inlet/Outlet	61	68	64	63	61	58	55	52	46
250	LCA251440	LCA253440	4	1400	Inlet/Outlet	61	68	64	63	61	58	55	52	46

Performance Curve

LCA31 - 1 & 3 Phase - 4 Pole



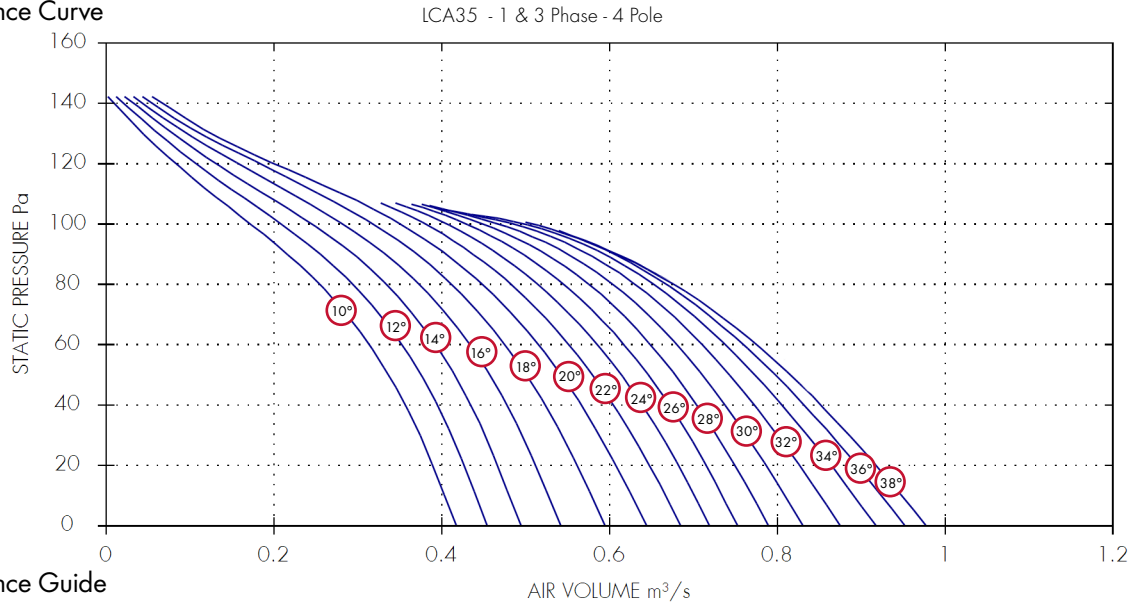
Performance Guide

Dia.	1 Phase Stock Ref	3 Phase Stock Ref	Poles	rpm	IP Rating	Curve Ref	m³/s at Pa						Motor kW	dBA @3m
							0	20	40	60	80	100		
315	ICA311410	ICA313410	4	1400	IP55	10°	0.29	0.27	0.23	0.19	0.12	0.04	0.25	49
315	ICA311412	ICA313412	4	1400	IP55	12°	0.32	0.29	0.26	0.22	0.14	0.05	0.25	49
315	ICA311414	ICA313414	4	1400	IP55	14°	0.35	0.32	0.29	0.24	0.17	0.07	0.25	49
315	ICA311416	ICA313416	4	1400	IP55	16°	0.38	0.35	0.32	0.27	0.19	0.08	0.25	44
315	ICA311418	ICA313418	4	1400	IP55	18°	0.42	0.39	0.35	0.3	0.22	0.09	0.25	44
315	ICA311420	ICA313420	4	1400	IP55	20°	0.45	0.42	0.38	0.32	0.24	0.11	0.25	44
315	ICA311422	ICA313422	4	1400	IP55	22°	0.48	0.45	0.4	0.35	0.26		0.25	44
315	ICA311424	ICA313424	4	1400	IP55	24°	0.5	0.47	0.43	0.37	0.28		0.25	46
315	ICA311426	ICA313426	4	1400	IP55	26°	0.53	0.49	0.45	0.39	0.29		0.25	46
315	ICA311428	ICA313428	4	1400	IP55	28°	0.55	0.52	0.47	0.41	0.31		0.25	46
315	ICA311430	ICA313430	4	1400	IP55	30°	0.58	0.54	0.5	0.43	0.32		0.25	46
315	ICA311432	ICA313432	4	1400	IP55	32°	0.61	0.57	0.52	0.45	0.32		0.25	48
315	ICA311434	ICA313434	4	1400	IP55	34°	0.64	0.59	0.54	0.47	0.33		0.25	48
315	ICA311436	ICA313436	4	1400	IP55	36°	0.67	0.61	0.56	0.48			0.25	48
315	ICA311438	ICA313438	4	1400	IP55	38°	0.68	0.63	0.57	0.49			0.25	48

Sound Power Level Spectra dB (ref 10⁻¹² Watts)

Dia.	1 Phase Stock Ref	3 Phase Stock Ref	Poles	Spectrum	dB								dBA @3m
					63	125	250	500	1k	2k	4k	8k	
315	ICA311410	ICA313410	4	Inlet/Outlet	66	69	67	64	65	63	58	48	49
315	ICA311412	ICA313412	4	Inlet/Outlet	66	69	67	64	65	63	58	48	49
315	ICA311414	ICA313414	4	Inlet/Outlet	66	69	67	64	65	63	58	48	49
315	ICA311416	ICA313416	4	Inlet/Outlet	61	64	62	59	60	58	53	43	44
315	ICA311418	ICA313418	4	Inlet/Outlet	61	64	62	59	60	58	53	43	44
315	ICA311420	ICA313420	4	Inlet/Outlet	61	64	62	59	60	58	53	43	44
315	ICA311422	ICA313422	4	Inlet/Outlet	61	64	62	59	60	58	53	43	44
315	ICA311424	ICA313424	4	Inlet/Outlet	63	66	64	61	62	60	55	45	46
315	ICA311426	ICA313426	4	Inlet/Outlet	63	66	64	61	62	60	55	45	46
315	ICA311428	ICA313428	4	Inlet/Outlet	63	66	64	61	62	60	55	45	46
315	ICA311430	ICA313430	4	Inlet/Outlet	63	66	64	61	62	60	55	45	46
315	ICA311432	ICA313432	4	Inlet/Outlet	65	68	66	63	64	62	57	47	48
315	ICA311434	ICA313434	4	Inlet/Outlet	65	68	66	63	64	62	57	47	48
315	ICA311436	ICA313436	4	Inlet/Outlet	65	68	66	63	64	62	57	47	48
315	ICA311438	ICA313438	4	Inlet/Outlet	65	68	66	63	64	62	57	47	48
315	ICA311440	ICA313440	4	Inlet/Outlet	65	68	66	63	64	62	57	47	48

Performance Curve



Performance Guide

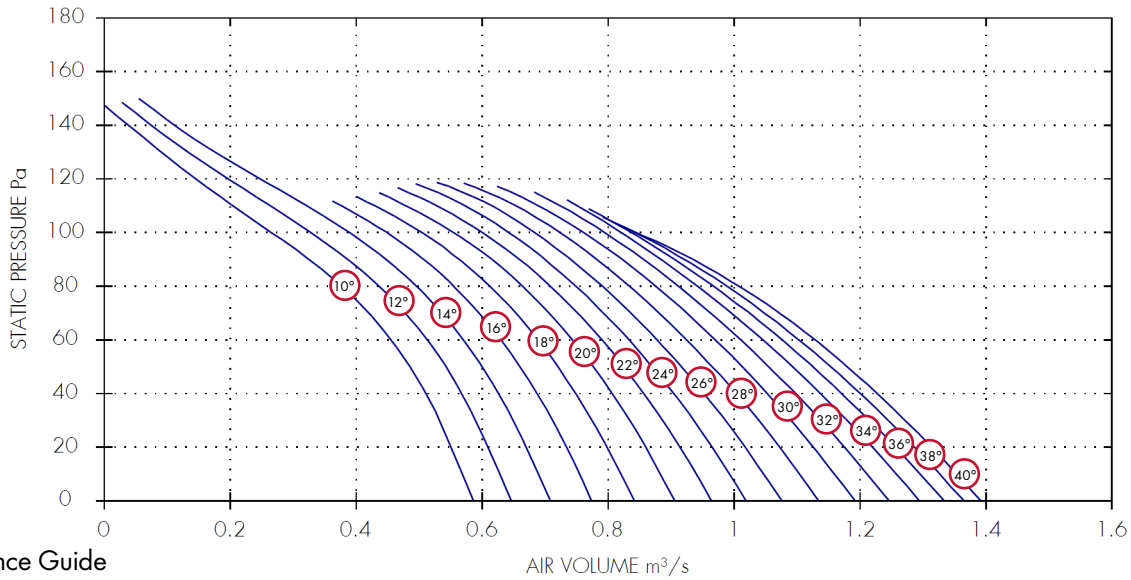
Dia.	1 Phase		Poles	rpm	IP Rating	Curve Ref	AIR VOLUME m ³ /s							Motor kW	dBA @3m	
	Stock Ref	3 Phase Stock Ref					0	20	40	60	80	100	120			140
355	ICA351410	ICA353410	4	1400	IP55	10°	0.42	0.39	0.36	0.31	0.25	0.17	0.08	0.01	0.25	50
355	ICA351412	ICA353412	4	1400	IP55	12°	0.45	0.43	0.39	0.35	0.29	0.21	0.11	0.02	0.25	50
355	ICA351414	ICA353414	4	1400	IP55	14°	0.49	0.47	0.43	0.39	0.33	0.25	0.13	0.03	0.25	50
355	ICA351416	ICA353416	4	1400	IP55	16°	0.54	0.51	0.48	0.43	0.37	0.28	0.16	0.04	0.25	50
355	ICA351418	ICA353418	4	1400	IP55	18°	0.6	0.56	0.52	0.48	0.41	0.32	0.18	0.06	0.25	50
355	ICA351420	ICA353420	4	1400	IP55	20°	0.64	0.61	0.57	0.52	0.45	0.35	0.2	0.07	0.25	50
355	ICA351422	ICA353422	4	1400	IP55	22°	0.68	0.65	0.6	0.55	0.48	0.38			0.25	45
355	ICA351424	ICA353424	4	1400	IP55	24°	0.72	0.68	0.64	0.59	0.51	0.41			0.25	45
355	ICA351426	ICA353426	4	1400	IP55	26°	0.75	0.72	0.67	0.62	0.55	0.43			0.25	46
355	ICA351428	ICA353428	4	1400	IP55	28°	0.79	0.75	0.7	0.65	0.58	0.45			0.25	47
355	ICA351430	ICA353430	4	1400	IP55	30°	0.83	0.79	0.74	0.68	0.6	0.47			0.25	47
355	ICA351432	ICA353432	4	1400	IP55	32°	0.87	0.83	0.77	0.71	0.63	0.48			0.25	48
355	ICA351434	ICA353434	4	1400	IP55	34°	0.92	0.86	0.81	0.74	0.65	0.5			0.25	48
355	ICA351436	ICA353436	4	1400	IP55	36°	0.95	0.89	0.83	0.76	0.67	0.51			0.25	48
355	ICA351438	ICA353438	4	1400	IP55	38°	0.98	0.92	0.85	0.78	0.68				0.25	48

Sound Power Level Spectra dB (ref 10⁻¹² Watts)

Dia.	1 Phase		Poles	Spectrum	dB								dBA @3m
	Stock Ref	3 Phase Stock Ref			63	125	250	500	1k	2k	4k	8k	
355	ICA351410	ICA353410	4	Inlet/Outlet	67	70	68	65	66	64	59	49	50
355	ICA351412	ICA353412	4	Inlet/Outlet	67	70	68	65	66	64	59	49	50
355	ICA351414	ICA353414	4	Inlet/Outlet	67	70	68	65	66	64	59	49	50
355	ICA351416	ICA353416	4	Inlet/Outlet	67	70	68	65	66	64	59	49	50
355	ICA351418	ICA353418	4	Inlet/Outlet	67	70	68	65	66	64	59	49	50
355	ICA351420	ICA353420	4	Inlet/Outlet	67	70	68	65	66	64	59	49	50
355	ICA351422	ICA353422	4	Inlet/Outlet	62	65	63	60	61	59	54	44	45
355	ICA351424	ICA353424	4	Inlet/Outlet	62	65	63	60	61	59	54	44	45
355	ICA351426	ICA353426	4	Inlet/Outlet	63	66	64	61	62	60	55	45	46
355	ICA351428	ICA353428	4	Inlet/Outlet	64	67	65	62	63	61	56	46	47
355	ICA351430	ICA353430	4	Inlet/Outlet	64	67	65	62	63	61	56	46	47
355	ICA351432	ICA353432	4	Inlet/Outlet	65	68	66	63	64	62	57	47	48
355	ICA351434	ICA353434	4	Inlet/Outlet	65	68	66	63	64	62	57	47	48
355	ICA351436	ICA353436	4	Inlet/Outlet	65	68	66	63	64	62	57	47	48
355	ICA351438	ICA353438	4	Inlet/Outlet	65	68	66	63	64	62	57	47	48

Performance Curve

LCA40 - 1 & 3 Phase - 4 Pole



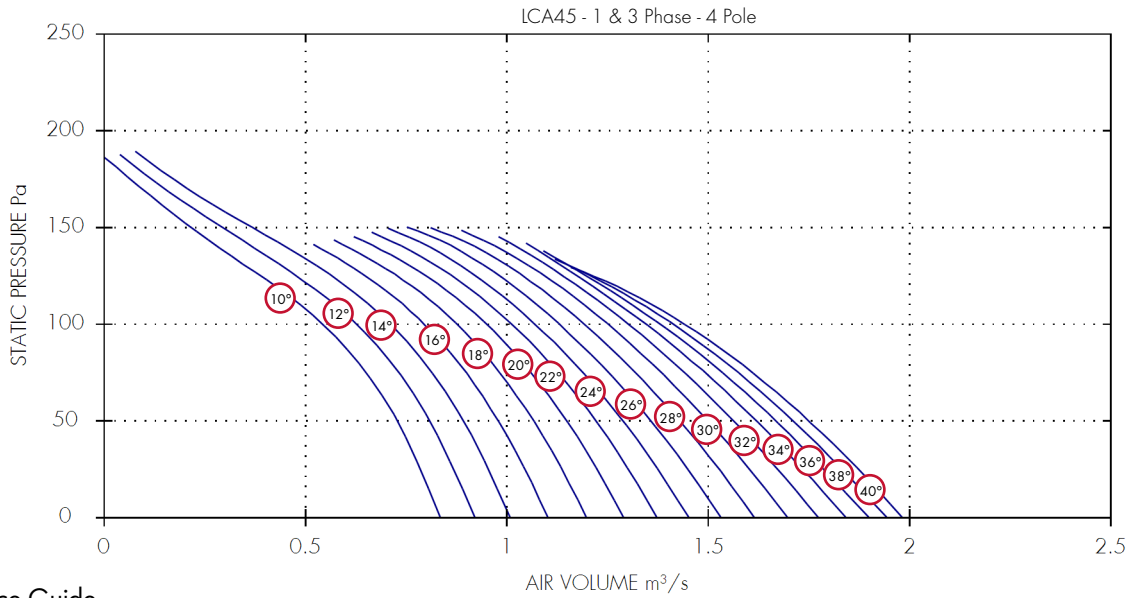
Performance Guide

Dia.	1 Phase		3 Phase		Poles	rpm	IP Rating	Curve Ref	m³/s at Pa								Motor kW	dBA @3m
	Stock Ref	Stock Ref	0	20					40	60	80	100	120	140				
400	LCA401410	LCA403410	4	1400	IP55	10°	0.59	0.55	0.51	0.46	0.38	0.27	0.15	0.04	0.25	54		
400	LCA401412	LCA403412	4	1400	IP55	12°	0.65	0.61	0.57	0.51	0.44	0.33	0.2	0.08	0.25	54		
400	LCA401414	LCA403414	4	1400	IP55	14°	0.71	0.67	0.63	0.57	0.5	0.39	0.25	0.11	0.25	54		
400	LCA401416	LCA403416	4	1400	IP55	16°	0.77	0.73	0.69	0.63	0.56	0.45			0.25	54		
400	LCA401418	LCA403418	4	1400	IP55	18°	0.84	0.8	0.75	0.69	0.61	0.5			0.25	54		
400	LCA401420	LCA403420	4	1400	IP55	20°	0.91	0.86	0.81	0.74	0.66	0.55			0.25	54		
400	LCA401422	LCA403422	4	1400	IP55	22°	0.96	0.91	0.86	0.79	0.71	0.6			0.25	48		
400	LCA401424	LCA403424	4	1400	IP55	24°	1.02	0.97	0.9	0.83	0.75	0.64			0.25	48		
400	LCA401426	LCA403426	4	1400	IP55	26°	1.08	1.02	0.95	0.88	0.79	0.68			0.25	50		
400	LCA401428	LCA403428	4	1400	IP55	28°	1.13	1.07	1	0.92	0.83	0.72			0.25	51		
400	LCA401430	LCA403430	4	1400	IP55	30°	1.19	1.13	1.05	0.97	0.88	0.76			0.25	52		
400	LCA401432	LCA403432	4	1400	IP55	32°	1.25	1.18	1.1	1.01	0.91	0.79			0.25	52		
400	LCA401434	LCA403434	4	1400	IP55	34°	1.29	1.22	1.14	1.05	0.94	0.82			0.25	51		
400	LCA401436	LCA403436	4	1400	IP55	36°	1.33	1.26	1.17	1.08	0.97	0.84			0.25	51		
400	LCA401438	LCA403438	4	1400	IP55	38°	1.36	1.29	1.2	1.1	0.99	0.84			0.25	50		
400	LCA401440	LCA403440	4	1400	IP55	40°	1.39	1.31	1.23	1.13	1.01	0.84			0.37	50		

Sound Power Level Spectra dB (ref 10⁻¹² Watts)

Dia.	1 Phase		3 Phase		Poles	Spectrum	dB										dBA @3m
	Stock Ref	Stock Ref	63	125			250	500	1k	2k	4k	8k					
400	LCA401410	LCA403410	4	Inlet/Outlet	72	74	73	69	70	67	63	54	54				
400	LCA401412	LCA403412	4	Inlet/Outlet	72	74	73	69	70	67	63	54	54				
400	LCA401414	LCA403414	4	Inlet/Outlet	72	74	73	69	70	67	63	54	54				
400	LCA401416	LCA403416	4	Inlet/Outlet	72	74	73	69	70	67	63	54	54				
400	LCA401418	LCA403418	4	Inlet/Outlet	72	74	73	69	70	67	63	54	54				
400	LCA401420	LCA403420	4	Inlet/Outlet	72	74	73	69	70	67	63	54	54				
400	LCA401422	LCA403422	4	Inlet/Outlet	66	68	67	63	64	61	57	48	48				
400	LCA401424	LCA403424	4	Inlet/Outlet	66	68	67	63	64	61	57	48	48				
400	LCA401426	LCA403426	4	Inlet/Outlet	68	70	69	65	66	63	59	50	50				
400	LCA401428	LCA403428	4	Inlet/Outlet	69	71	70	66	67	64	60	51	51				
400	LCA401430	LCA403430	4	Inlet/Outlet	70	72	71	67	68	65	61	52	52				
400	LCA401432	LCA403432	4	Inlet/Outlet	70	72	71	67	68	65	61	52	52				
400	LCA401434	LCA403434	4	Inlet/Outlet	69	71	70	66	67	64	60	51	51				
400	LCA401436	LCA403436	4	Inlet/Outlet	69	71	70	66	67	64	60	51	51				
400	LCA401438	LCA403438	4	Inlet/Outlet	68	70	69	65	66	63	59	50	50				
400	LCA401440	LCA403440	4	Inlet/Outlet	68	70	69	65	66	63	59	50	50				

Performance Curve



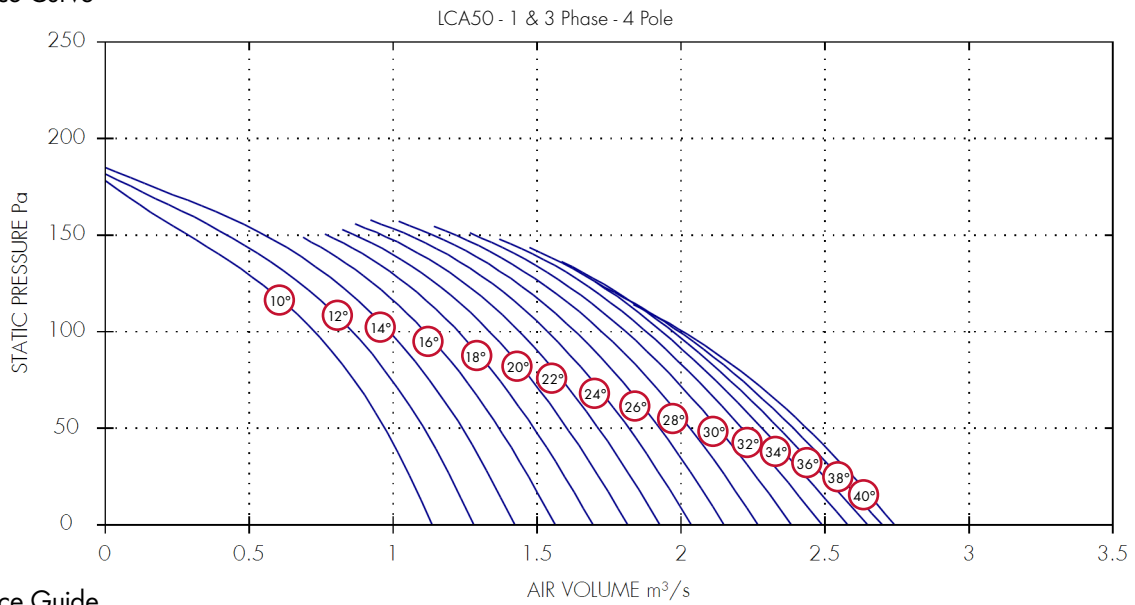
Performance Guide

Dia.	1 Phase		3 Phase		IP	Curve	m³/s at Pa					Motor kW	dBA @3m
	Stock Ref	Stock Ref	Poles	rpm			Rating	0	40	80	120		
450	ICA451410	ICA453410	4	1400	IP55	10°	0.83	0.75	0.63	0.42	0.15	0.25	59
450	ICA451412	ICA453412	4	1400	IP55	12°	0.92	0.83	0.71	0.51	0.22	0.25	59
450	ICA451414	ICA453414	4	1400	IP55	14°	1.01	0.92	0.8	0.6	0.28	0.25	59
450	ICA451416	ICA453416	4	1400	IP55	16°	1.1	1.01	0.88	0.68		0.25	59
450	ICA451418	ICA453418	4	1400	IP55	18°	1.2	1.1	0.96	0.76		0.25	54
450	ICA451420	ICA453420	4	1400	IP55	20°	1.29	1.18	1.04	0.83		0.25	55
450	ICA451422	ICA453422	4	1400	IP55	22°	1.37	1.25	1.11	0.9		0.25	54
450	ICA451424	ICA453424	4	1400	IP55	24°	1.45	1.32	1.17	0.96		0.25	54
450	ICA451426	ICA453426	4	1400	IP55	26°	1.53	1.4	1.23	1.01		0.37	54
450	ICA451428	ICA453428	4	1400	IP55	28°	1.61	1.47	1.29	1.07		0.37	54
450	ICA451430	ICA453430	4	1400	IP55	30°	1.7	1.54	1.36	1.13		0.37	54
450	ICA451432	ICA453432	4	1400	IP55	32°	1.77	1.61	1.41	1.17		0.37	54
450	ICA451434	ICA453434	4	1400	IP55	34°	1.84	1.67	1.46	1.21		0.55	54
450	ICA451436	ICA453436	4	1400	IP55	36°	1.9	1.72	1.51	1.24		0.55	54
450	ICA451438	ICA453438	4	1400	IP55	38°	1.94	1.76	1.54	1.25		0.55	54
450	ICA451440	ICA453440	4	1400	IP55	40°	1.98	1.8	1.58	1.27		0.55	54

Sound Power Level Spectra dB (ref 10⁻¹² Watts)

Dia.	1 Phase		3 Phase		Spectrum	dB							dBA @3m	
	Stock Ref	Stock Ref	Poles			63	125	250	500	1k	2k	4k		8k
450	ICA451410	ICA453410	4		Inlet/Outlet	77	79	78	74	75	72	68	59	59
450	ICA451412	ICA453412	4		Inlet/Outlet	77	79	78	74	75	72	68	59	59
450	ICA451414	ICA453414	4		Inlet/Outlet	77	79	78	74	75	72	68	59	59
450	ICA451416	ICA453416	4		Inlet/Outlet	77	79	78	74	75	72	68	59	59
450	ICA451418	ICA453418	4		Inlet/Outlet	72	74	73	69	70	67	63	54	54
450	ICA451420	ICA453420	4		Inlet/Outlet	73	75	74	70	71	68	64	55	55
450	ICA451422	ICA453422	4		Inlet/Outlet	72	74	73	69	70	67	63	54	54
450	ICA451424	ICA453424	4		Inlet/Outlet	72	74	73	69	70	67	63	54	54
450	ICA451426	ICA453426	4		Inlet/Outlet	72	74	73	69	70	67	63	54	54
450	ICA451428	ICA453428	4		Inlet/Outlet	72	74	73	69	70	67	63	54	54
450	ICA451430	ICA453430	4		Inlet/Outlet	72	74	73	69	70	67	63	54	54
450	ICA451432	ICA453432	4		Inlet/Outlet	72	74	73	69	70	67	63	54	54
450	ICA451434	ICA453434	4		Inlet/Outlet	72	74	73	69	70	67	63	54	54
450	ICA451436	ICA453436	4		Inlet/Outlet	72	74	73	69	70	67	63	54	54
450	ICA451438	ICA453438	4		Inlet/Outlet	72	74	73	69	70	67	63	54	54
450	ICA451440	ICA453440	4		Inlet/Outlet	72	74	73	69	70	67	63	54	54

Performance Curve



Performance Guide

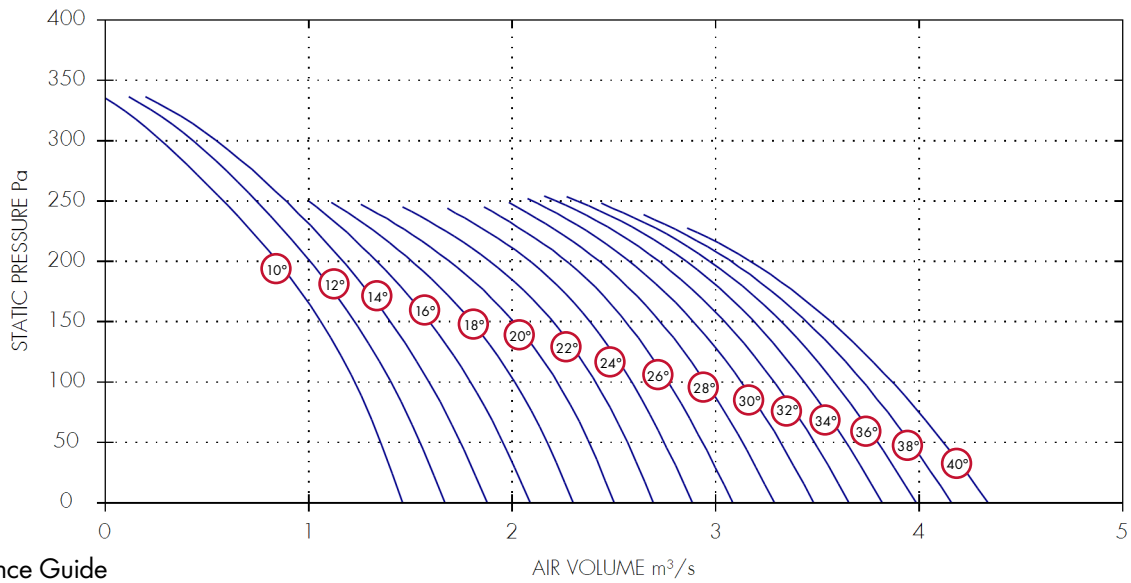
Dia.	1 Phase		3 Phase		IP	Curve	m³/s at Pa					Motor kW	dBA @3m
	Stock Ref	Stock Ref	Poles	rpm			Rating	Ref	0	40	80		
500	LCA501410	LCA503410	4	1400	IP55	10°	1.14	1.01	0.84	0.58	0.18	0.25	58
500	LCA501412	LCA503412	4	1400	IP55	12°	1.28	1.15	0.97	0.72	0.3	0.25	58
500	LCA501414	LCA503414	4	1400	IP55	14°	1.42	1.28	1.1	0.85	0.42	0.25	58
500	LCA501416	LCA503416	4	1400	IP55	16°	1.56	1.41	1.22	0.97		0.25	58
500	LCA501418	LCA503418	4	1400	IP55	18°	1.69	1.53	1.34	1.09		0.25	58
500	LCA501420	LCA503420	4	1400	IP55	20°	1.82	1.65	1.45	1.19		0.37	58
500	LCA501422	LCA503422	4	1400	IP55	22°	1.93	1.76	1.56	1.29		0.37	58
500	LCA501424	LCA503424	4	1400	IP55	24°	2.04	1.87	1.66	1.39		0.37	58
500	LCA501426	LCA503426	4	1400	IP55	26°	2.15	1.97	1.76	1.48		0.37	60
500	LCA501428	LCA503428	4	1400	IP55	28°	2.27	2.08	1.86	1.56		0.55	60
500	LCA501430	LCA503430	4	1400	IP55	30°	2.38	2.18	1.95	1.64		0.55	61
500	LCA501432	LCA503432	4	1400	IP55	32°	2.49	2.27	2.02	1.71		0.55	61
500	LCA501434	LCA503434	4	1400	IP55	34°	2.58	2.34	2.08	1.76		0.55	61
500	LCA501436	LCA503436	4	1400	IP55	36°	2.65	2.4	2.13	1.78		0.75	61
500	LCA501438	LCA503438	4	1400	IP55	38°	2.7	2.46	2.17	1.77		0.75	61
500	LCA501440	LCA503440	4	1400	IP55	40°	2.74	2.5	2.2			0.75	61

Sound Power Level Spectra dB (ref 10⁻¹² Watts)

Dia.	1 Phase		3 Phase		Spectrum	dB										
	Stock Ref	Stock Ref	Poles	Rating		63	125	250	500	1k	2k	4k	8k	dBA @3m		
500	LCA501410	LCA503410	4	IP55	Inlet/Outlet	76	78	74	75	74	71	68	58	58		
500	LCA501412	LCA503412	4	IP55	Inlet/Outlet	76	78	74	75	74	71	68	58	58		
500	LCA501414	LCA503414	4	IP55	Inlet/Outlet	76	78	74	75	74	71	68	58	58		
500	LCA501416	LCA503416	4	IP55	Inlet/Outlet	76	78	74	75	74	71	68	58	58		
500	LCA501418	LCA503418	4	IP55	Inlet/Outlet	76	78	74	75	74	71	68	58	58		
500	LCA501420	LCA503420	4	IP55	Inlet/Outlet	76	78	74	75	74	71	68	58	58		
500	LCA501422	LCA503422	4	IP55	Inlet/Outlet	76	78	74	75	74	71	68	58	58		
500	LCA501424	LCA503424	4	IP55	Inlet/Outlet	76	78	74	75	74	71	68	58	58		
500	LCA501426	LCA503426	4	IP55	Inlet/Outlet	78	80	76	77	76	73	70	60	60		
500	LCA501428	LCA503428	4	IP55	Inlet/Outlet	78	80	76	77	76	73	70	60	60		
500	LCA501430	LCA503430	4	IP55	Inlet/Outlet	79	81	77	78	77	74	71	61	61		
500	LCA501432	LCA503432	4	IP55	Inlet/Outlet	79	81	77	78	77	74	71	61	61		
500	LCA501434	LCA503434	4	IP55	Inlet/Outlet	79	81	77	78	77	74	71	61	61		
500	LCA501436	LCA503436	4	IP55	Inlet/Outlet	79	81	77	78	77	74	71	61	61		
500	LCA501438	LCA503438	4	IP55	Inlet/Outlet	79	81	77	78	77	74	71	61	61		
500	LCA501440	LCA503440	4	IP55	Inlet/Outlet	79	81	77	78	77	74	71	61	61		

Performance Curve

LCA56 - 1 & 3 Phase - 4 Pole



Performance Guide

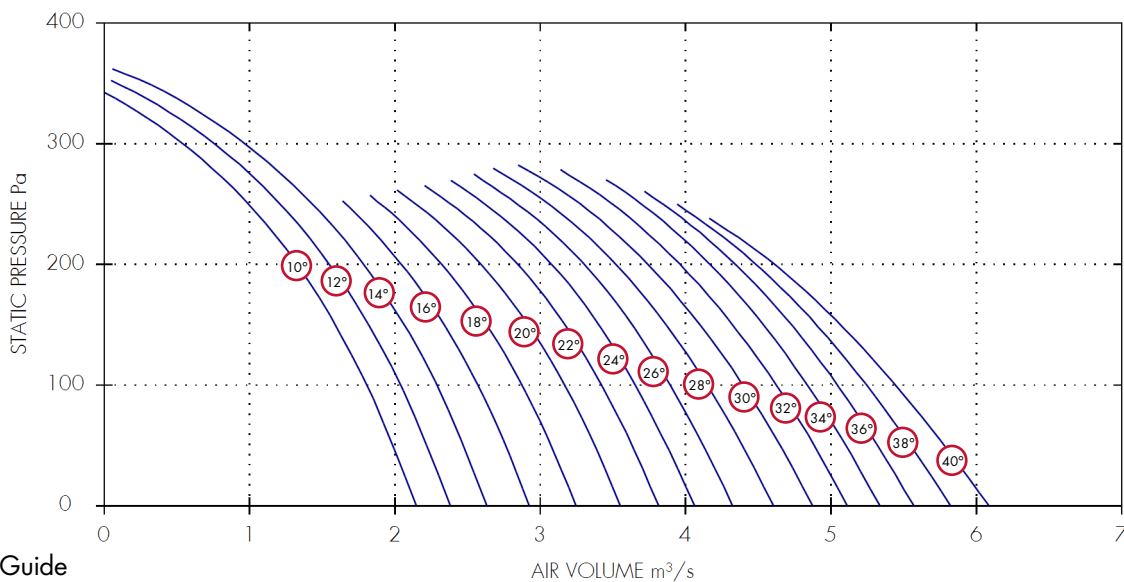
Dia.	1 Phase		3 Phase		IP	Curve	m³/s at Pa							Motor kW	dBA @3m
	Stock Ref	Stock Ref	Poles	rpm			Rating	Ref	0	50	100	150	200		
560	LCA561410	LCA563410	4	1400	IP55	10°	1.46	1.36	1.23	1.06	0.85	0.58	0.28	0.55	64
560	LCA561412	LCA563412	4	1400	IP55	12°	1.67	1.55	1.41	1.23	1.01	0.74	0.43	0.55	64
560	LCA561414	LCA563414	4	1400	IP55	14°	1.88	1.75	1.59	1.4	1.17	0.89	0.55	0.55	64
560	LCA561416	LCA563416	4	1400	IP55	16°	2.09	1.96	1.8	1.59	1.34			0.55	64
560	LCA561418	LCA563418	4	1400	IP55	18°	2.3	2.17	2.01	1.8	1.51			0.75	64
560	LCA561420	LCA563420	4	1400	IP55	20°	2.5	2.38	2.22	2.01	1.69			0.75	64
560	LCA561422	LCA563422	4	1400	IP55	22°	2.7	2.57	2.41	2.2	1.89			0.75	64
560	LCA561424	LCA563424	4	1400	IP55	24°	2.89	2.75	2.59	2.38	2.09			1.1	64
560	LCA561426	LCA563426	4	1400	IP55	26°	3.08	2.94	2.77	2.56	2.27			1.1	64
560	LCA561428	LCA563428	4	1400	IP55	28°	3.29	3.13	2.95	2.73	2.43			1.1	64
560	LCA561430	LCA563430	4	1400	IP55	30°	3.48	3.32	3.13	2.89	2.58	2.1		1.1	64
560	LCA561432	LCA563432	4	1400	IP55	32°	3.66	3.49	3.29	3.04	2.72	2.21		1.5	64
560	LCA561434	LCA563434	4	1400	IP55	34°	3.82	3.64	3.44	3.19	2.85	2.32		1.5	64
560	LCA561436	LCA563436	4	1400	IP55	36°	3.99	3.8	3.58	3.32	2.97			1.5	64
560	-	LCA563438	4	1400	IP55	38°	4.16	3.96	3.73	3.45	3.08			2.2	64
560	-	LCA563440	4	1400	IP55	40°	4.34	4.12	3.87	3.57	3.17			2.2	64

Sound Power Level Spectra dB (ref 10⁻¹² Watts)

Dia.	1 Phase		3 Phase		Spectrum	dB											
	Stock Ref	Stock Ref	Poles	rpm		63	125	250	500	1k	2k	4k	8k	dBA @3m			
560	LCA561410	LCA563410	4	1400	Inlet/Outlet	75	75	80	81	81	77	74	64	64			
560	LCA561412	LCA563412	4	1400	Inlet/Outlet	75	75	80	81	81	77	74	64	64			
560	LCA561414	LCA563414	4	1400	Inlet/Outlet	75	75	80	81	81	77	74	64	64			
560	LCA561416	LCA563416	4	1400	Inlet/Outlet	75	75	80	81	81	77	74	64	64			
560	LCA561418	LCA563418	4	1400	Inlet/Outlet	75	75	80	81	81	77	74	64	64			
560	LCA561420	LCA563420	4	1400	Inlet/Outlet	75	75	80	81	81	77	74	64	64			
560	LCA561422	LCA563422	4	1400	Inlet/Outlet	75	75	80	81	81	77	74	64	64			
560	LCA561424	LCA563424	4	1400	Inlet/Outlet	75	75	80	81	81	77	74	64	64			
560	LCA561426	LCA563426	4	1400	Inlet/Outlet	75	75	80	81	81	77	74	64	64			
560	LCA561428	LCA563428	4	1400	Inlet/Outlet	75	75	80	81	81	77	74	64	64			
560	LCA561430	LCA563430	4	1400	Inlet/Outlet	75	75	80	81	81	77	74	64	64			
560	LCA561432	LCA563432	4	1400	Inlet/Outlet	75	75	80	81	81	77	74	64	64			
560	LCA561434	LCA563434	4	1400	Inlet/Outlet	75	75	80	81	81	77	74	64	64			
560	LCA561436	LCA563436	4	1400	Inlet/Outlet	75	75	80	81	81	77	74	64	64			
560	-	LCA563438	4	1400	Inlet/Outlet	75	75	80	81	81	77	74	64	64			
560	-	LCA563440	4	1400	Inlet/Outlet	75	75	80	81	81	77	74	64	64			

Performance Curve

LCA63 - 1 & 3 Phase - 4 Pole



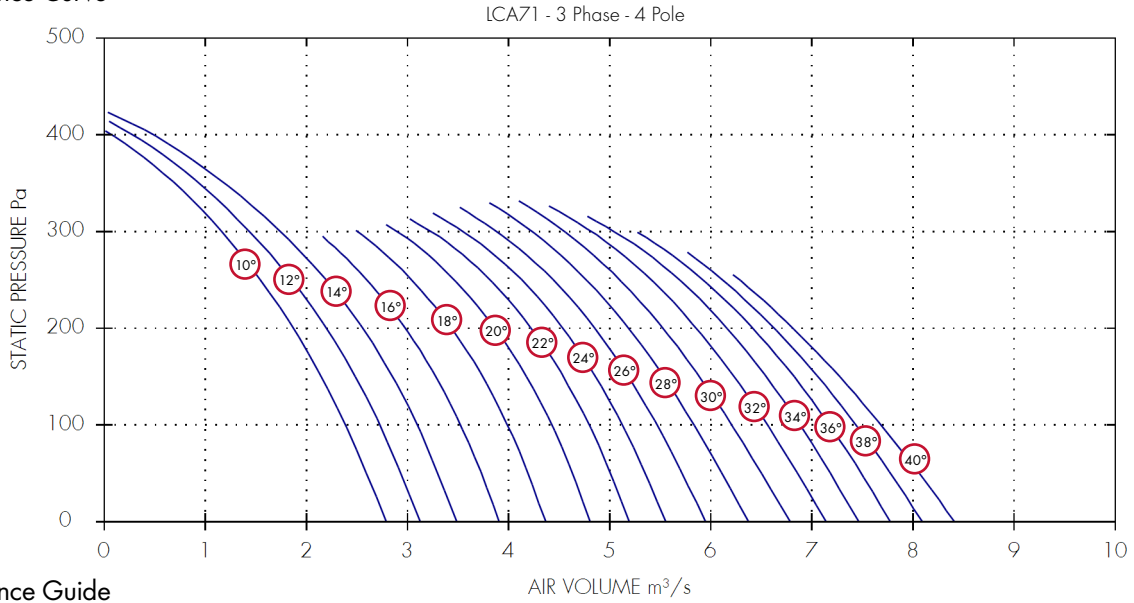
Performance Guide

Dia.	1 Phase		3 Phase		IP	Curve Ref	m³/s at Pa						Motor kW	dBA @3m	
	Stock Ref	Stock Ref	Poles	rpm			Rating	0	50	100	150	200			250
630	LCA631410	LCA633410	4	1400	IP55	10°	2.15	1.99	1.81	1.59	1.33	0.99	0.54	0.55	64
630	LCA631412	LCA633412	4	1400	IP55	12°	2.38	2.22	2.04	1.82	1.55	1.21	0.76	0.75	64
630	LCA631414	LCA633414	4	1400	IP55	14°	2.64	2.47	2.29	2.06	1.79	1.43	0.97	0.75	64
630	LCA631416	LCA633416	4	1400	IP55	16°	2.93	2.76	2.57	2.34	2.05	1.66	1.1	0.75	64
630	LCA631418	LCA633418	4	1400	IP55	18°	3.24	3.08	2.88	2.63	2.32	1.9	1.1	0.75	64
630	LCA631420	LCA633420	4	1400	IP55	20°	3.55	3.37	3.17	2.92	2.59	2.14	1.1	0.75	64
630	LCA631422	LCA633422	4	1400	IP55	22°	3.82	3.63	3.42	3.17	2.85	2.38	1.5	0.75	65
630	LCA631424	LCA633424	4	1400	IP55	24°	4.06	3.87	3.66	3.4	3.08	2.62	1.5	0.75	65
630	LCA631426	LCA633426	4	1400	IP55	26°	4.32	4.12	3.9	3.63	3.3	2.84	1.5	0.75	65
630	-	LCA633428	4	1400	IP55	28°	4.61	4.39	4.15	3.87	3.52	3.06	2.2	0.75	65
630	-	LCA633430	4	1400	IP55	30°	4.88	4.65	4.4	4.1	3.74	3.27	2.2	0.75	65
630	-	LCA633432	4	1400	IP55	32°	5.11	4.89	4.63	4.32	3.96	3.5	2.2	0.75	65
630	-	LCA633434	4	1400	IP55	34°	5.34	5.1	4.84	4.54	4.17	3.7	2.2	0.75	65
630	-	LCA633436	4	1400	IP55	36°	5.57	5.32	5.04	4.73	4.34	3.84	3	0.75	65
630	-	LCA633438	4	1400	IP55	38°	5.82	5.55	5.25	4.9	4.48	3.84	3	0.75	65
630	-	LCA633440	4	1400	IP55	40°	6.09	5.78	5.44	5.06	4.61	3.84	3	0.75	65

Sound Power Level Spectra dB (ref 10⁻¹² Watts)

Dia.	1 Phase		3 Phase		Spectrum	dB										
	Stock Ref	Stock Ref	Poles	rpm		63	125	250	500	1k	2k	4k	8k	dBA @3m		
630	LCA631410	LCA633410	4	1400	Inlet/Outlet	75	71	79	82	81	77	74	66	64		
630	LCA631412	LCA633412	4	1400	Inlet/Outlet	75	71	79	82	81	77	74	66	64		
630	LCA631414	LCA633414	4	1400	Inlet/Outlet	75	71	79	82	81	77	74	66	64		
630	LCA631416	LCA633416	4	1400	Inlet/Outlet	75	71	79	82	81	77	74	66	64		
630	LCA631418	LCA633418	4	1400	Inlet/Outlet	75	71	79	82	81	77	74	66	64		
630	LCA631420	LCA633420	4	1400	Inlet/Outlet	75	71	79	82	81	77	74	66	64		
630	LCA631422	LCA633422	4	1400	Inlet/Outlet	76	72	80	83	82	78	75	67	65		
630	LCA631424	LCA633424	4	1400	Inlet/Outlet	76	72	80	83	82	78	75	67	65		
630	LCA631426	LCA633426	4	1400	Inlet/Outlet	76	72	80	83	82	78	75	67	65		
630	-	LCA633428	4	1400	Inlet/Outlet	76	72	80	83	82	78	75	67	65		
630	-	LCA633430	4	1400	Inlet/Outlet	76	72	80	83	82	78	75	67	65		
630	-	LCA633432	4	1400	Inlet/Outlet	76	72	80	83	82	78	75	67	65		
630	-	LCA633434	4	1400	Inlet/Outlet	76	72	80	83	82	78	75	67	65		
630	-	LCA633436	4	1400	Inlet/Outlet	76	72	80	83	82	78	75	67	65		
630	-	LCA633438	4	1400	Inlet/Outlet	76	72	80	83	82	78	75	67	65		
630	-	LCA633440	4	1400	Inlet/Outlet	76	72	80	83	82	78	75	67	65		

Performance Curve



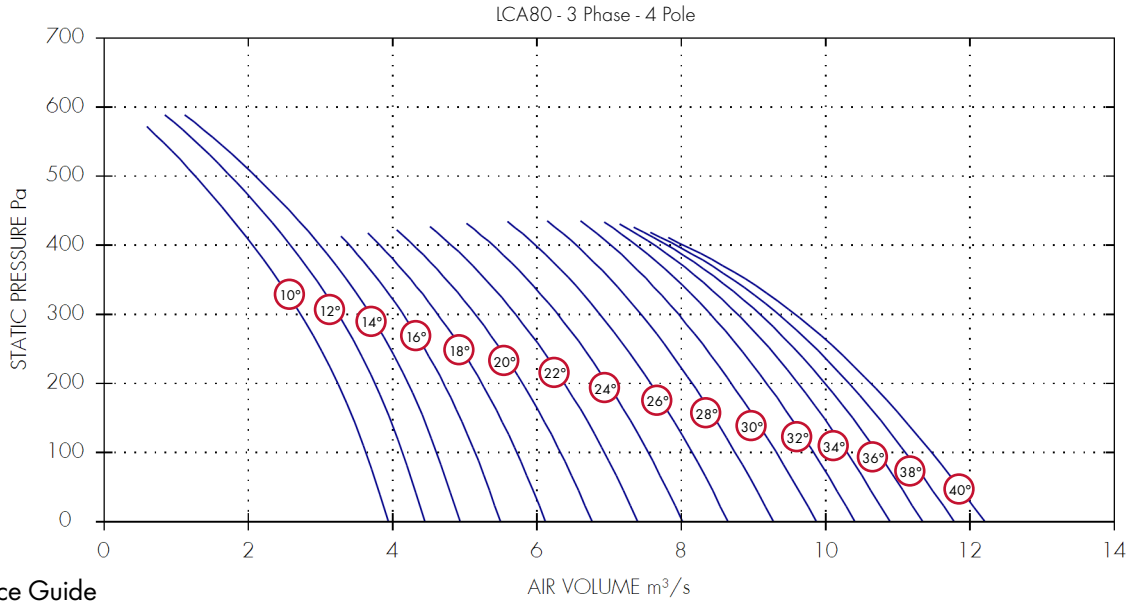
Performance Guide

Dia.	3 Phase		IP	Curve	m³/s at Pa					Motor	dBA @3m	
	Stock Ref	Poles			rpm	Rating	Ref	0	100			200
710	LCA713410	4	1420	IP55	10°	2.79	2.39	1.87	1.16	0.07	0.75	74
710	LCA713412	4	1420	IP55	12°	3.12	2.73	2.2	1.44	0.28	1.1	74
710	LCA713414	4	1420	IP55	14°	3.49	3.1	2.56	1.74	0.48	1.1	74
710	LCA713416	4	1420	IP55	16°	3.91	3.53	2.98			1.5	74
710	LCA713418	4	1420	IP55	18°	4.37	3.99	3.44	2.5		1.5	74
710	LCA713420	4	1420	IP55	20°	4.81	4.43	3.87	2.89		2.2	71
710	LCA713422	4	1420	IP55	22°	5.19	4.8	4.23	3.23		2.2	71
710	LCA713424	4	1420	IP55	24°	5.56	5.13	4.54	3.55		2.2	71
710	LCA713426	4	1420	IP55	26°	5.95	5.47	4.85	3.88		3	71
710	LCA713428	4	1420	IP55	28°	6.37	5.84	5.19	4.23		3	71
710	LCA713430	4	1420	IP55	30°	6.78	6.21	5.53	4.55		3	71
710	LCA713432	4	1420	IP55	32°	7.14	6.56	5.86	4.82		4	71
710	LCA713434	4	1420	IP55	34°	7.46	6.88	6.16	5.04		4	71
710	LCA713436	4	1420	IP55	36°	7.77	7.17	6.42			4	71
710	LCA713438	4	1420	IP55	38°	8.09	7.44	6.63			5.5	71
710	LCA713440	4	1420	IP55	40°	8.41	7.68	6.81			5.5	71

Sound Power Level Spectra dB (ref 10⁻¹² Watts)

Dia.	3 Phase		Spectrum	dB							dBA @3m	
	Stock Ref	Poles		63	125	250	500	1k	2k	4k		8k
710	LCA713410	4	Inlet/Outlet	89	84	92	92	90	85	82	75	74
710	LCA713412	4	Inlet/Outlet	89	84	92	92	90	85	82	75	74
710	LCA713414	4	Inlet/Outlet	89	84	92	92	90	85	82	75	74
710	LCA713416	4	Inlet/Outlet	89	84	92	92	90	85	82	75	74
710	LCA713418	4	Inlet/Outlet	89	84	92	92	90	85	82	75	74
710	LCA713420	4	Inlet/Outlet	86	81	89	89	87	82	79	72	71
710	LCA713422	4	Inlet/Outlet	86	81	89	89	87	82	79	72	71
710	LCA713424	4	Inlet/Outlet	86	81	89	89	87	82	79	72	71
710	LCA713426	4	Inlet/Outlet	86	81	89	89	87	82	79	72	71
710	LCA713428	4	Inlet/Outlet	86	81	89	89	87	82	79	72	71
710	LCA713430	4	Inlet/Outlet	86	81	89	89	87	82	79	72	71
710	LCA713432	4	Inlet/Outlet	86	81	89	89	87	82	79	72	71
710	LCA713434	4	Inlet/Outlet	86	81	89	89	87	82	79	72	71
710	LCA713436	4	Inlet/Outlet	86	81	89	89	87	82	79	72	71
710	LCA713438	4	Inlet/Outlet	86	81	89	89	87	82	79	72	71
710	LCA713440	4	Inlet/Outlet	86	81	89	89	87	82	79	72	71

Performance Curve



Performance Guide

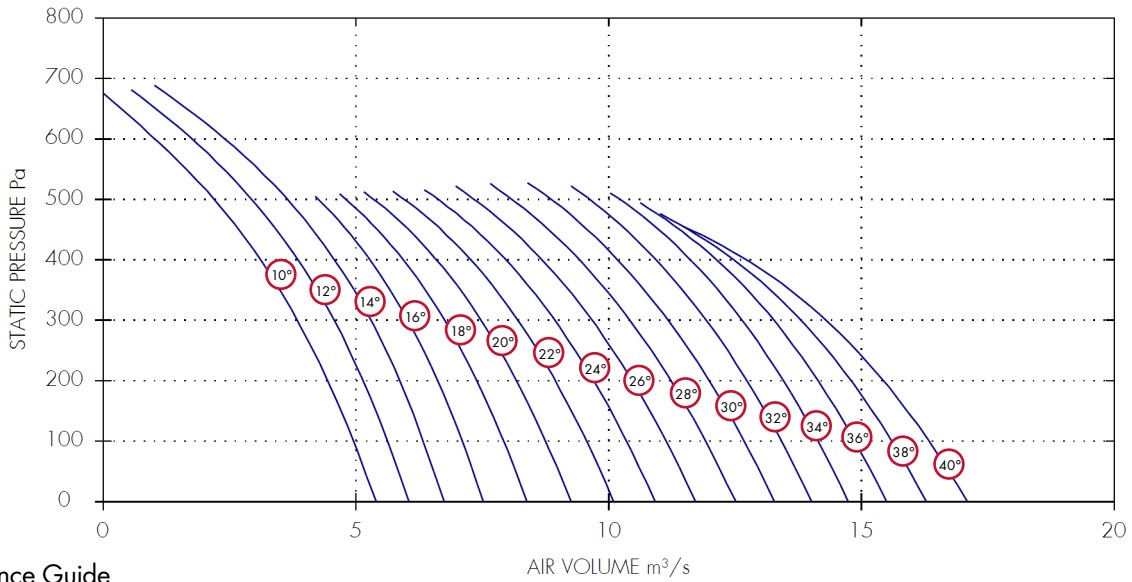
Dia.	3 Phase Stock Ref	Poles	rpm	IP Rating	Curve Ref	m³/s at Pa					Motor kW	dBA @3m	
						0	100	200	300	400			500
800	LCA803410	4	1420	IP55	10°	3.94	3.63	3.24	2.73	2.06	1.27	2.2	80
800	LCA803412	4	1440	IP55	12°	4.45	4.14	3.76	3.25	2.58	1.75	2.2	80
800	LCA803414	4	1440	IP55	14°	4.94	4.61	4.21	3.69	2.99	2.1	3	80
800	LCA803416	4	1440	IP55	16°	5.49	5.14	4.71	4.15	3.4		3	80
800	LCA803418	4	1440	IP55	18°	6.12	5.72	5.24	4.63	3.82		3	80
800	LCA803420	4	1440	IP55	20°	6.77	6.33	5.8	5.14	4.29		3	77
800	LCA803422	4	1440	IP55	22°	7.4	6.94	6.38	5.7	4.82		4	78
800	LCA803424	4	1440	IP55	24°	8.02	7.54	6.98	6.29	5.39		4	78
800	LCA803426	4	1440	IP55	26°	8.65	8.15	7.57	6.88	5.98		5.5	78
800	LCA803428	4	1440	IP55	28°	9.28	8.75	8.15	7.44	6.55		5.5	79
800	LCA803430	4	1440	IP55	30°	9.88	9.32	8.69	7.96	7.03		7.5	79
800	LCA803432	4	1440	IP55	32°	10.41	9.84	9.19	8.41	7.38		7.5	79
800	LCA803434	4	1440	IP55	34°	10.89	10.3	9.62	8.78	7.63		7.5	79
800	LCA803436	4	1440	IP55	36°	11.34	10.72	10	9.09	7.8		11	79
800	LCA803438	4	1440	IP55	38°	11.78	11.11	10.33	9.35	7.93		11	79
800	LCA803440	4	1440	IP55	40°	12.21	11.47	10.63	9.58	8.04		11	79

Sound Power Level Spectra dB (ref 10⁻¹² Watts)

Dia.	3 Phase Stock Ref	Poles	Spectrum	dB								dBA @3m
				63	125	250	500	1k	2k	4k	8k	
800	LCA803410	4	Inlet/Outlet	93	87	93	98	96	93	88	80	80
800	LCA803412	4	Inlet/Outlet	93	87	93	98	96	93	88	80	80
800	LCA803414	4	Inlet/Outlet	93	87	93	98	96	93	88	80	80
800	LCA803416	4	Inlet/Outlet	93	87	93	98	96	93	88	80	80
800	LCA803418	4	Inlet/Outlet	93	87	93	98	96	93	88	80	80
800	LCA803420	4	Inlet/Outlet	90	84	90	95	93	90	85	77	77
800	LCA803422	4	Inlet/Outlet	91	85	91	96	94	91	86	78	78
800	LCA803424	4	Inlet/Outlet	91	85	91	96	94	91	86	78	78
800	LCA803426	4	Inlet/Outlet	91	85	91	96	94	91	86	78	78
800	LCA803428	4	Inlet/Outlet	92	86	92	97	95	92	87	79	79
800	LCA803430	4	Inlet/Outlet	92	86	92	97	95	92	87	79	79
800	LCA803432	4	Inlet/Outlet	92	86	92	97	95	92	87	79	79
800	LCA803434	4	Inlet/Outlet	92	86	92	97	95	92	87	79	79
800	LCA803436	4	Inlet/Outlet	92	86	92	97	95	92	87	79	79
800	LCA803438	4	Inlet/Outlet	92	86	92	97	95	92	87	79	79
800	LCA803440	4	Inlet/Outlet	92	86	92	97	95	92	87	79	79

Performance Curve

LCA90 - 3 Phase - 4 Pole



Performance Guide

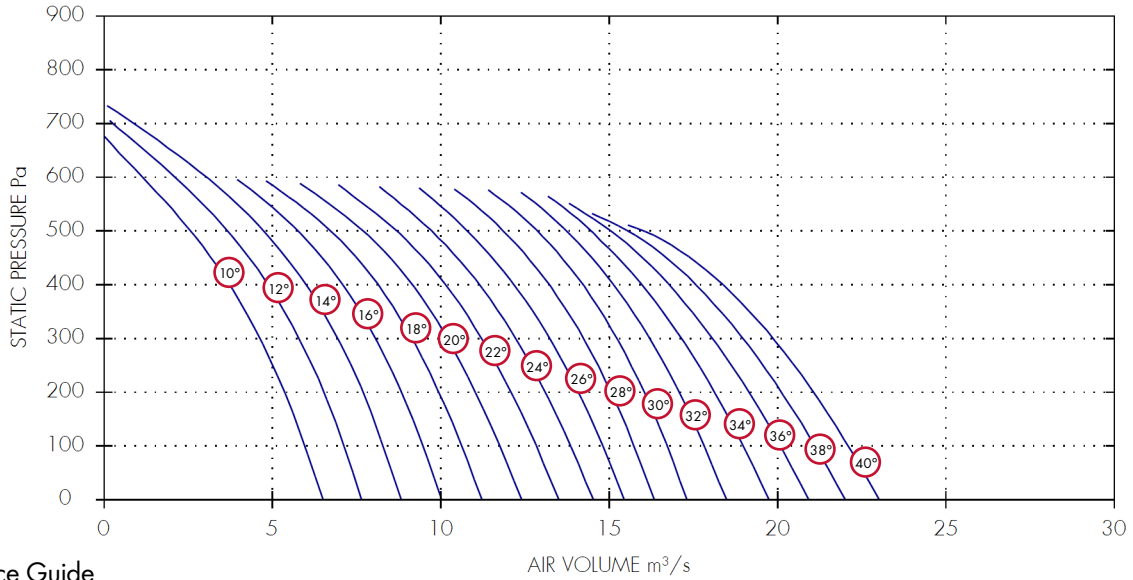
3 Phase		IP Rating	Curve Ref	m³/s at Pa								Motor kW	dBA @3m	
Dia.	Stock Ref			Poles	rpm	0	100	200	300	400	500			600
900	LCA903410	4	1440	IP55	10°	5.4	4.95	4.45	3.84	3.11	2.19	1.02	3	79
900	LCA903412	4	1440	IP55	12°	6.05	5.63	5.15	4.57	3.85	2.94	1.75	4	80
900	LCA903414	4	1440	IP55	14°	6.74	6.34	5.87	5.3	4.58	3.64	2.41	4	80
900	LCA903416	4	1440	IP55	16°	7.52	7.11	6.62	6.03	5.27	4.26		4	80
900	LCA903418	4	1440	IP55	18°	8.38	7.93	7.4	6.75	5.94	4.8		5.5	81
900	LCA903420	4	1440	IP55	20°	9.26	8.76	8.18	7.48	6.6	5.35		5.5	81
900	LCA903422	4	1440	IP55	22°	10.1	9.57	8.95	8.21	7.27	5.96		7.5	81
900	LCA903424	4	1440	IP55	24°	10.92	10.35	9.71	8.94	7.97	6.62		7.5	81
900	LCA903426	4	1440	IP55	26°	11.72	11.14	10.47	9.67	8.68	7.34		7.5	82
900	LCA903428	4	1440	IP55	28°	12.51	11.92	11.23	10.42	9.42	8.09		11	82
900	LCA903430	4	1440	IP55	30°	13.28	12.69	11.99	11.18	10.17	8.86		11	82
900	LCA903432	4	1440	IP55	32°	14.02	13.42	12.74	11.93	10.94	9.62		11	82
900	LCA903434	4	1440	IP55	34°	14.74	14.15	13.46	12.64	11.62	10.22		15	82
900	LCA903436	4	1440	IP55	36°	15.5	14.87	14.14	13.27	12.14			15	82
900	LCA903438	4	1440	IP55	38°	16.29	15.6	14.8	13.81	12.47			15	82
900	LCA903440	4	1440	IP55	40°	17.1	16.34	15.44	14.3	12.72			15	82

Sound Power Level Spectra dB (ref 10⁻¹² Watts)

Dia.	3 Phase Stock Ref	Poles	Spectrum	dB @3m								
				63	125	250	500	1k	2k	4k	8k	
900	LCA903410	4	Inlet/Outlet	89	83	91	97	95	92	87	79	79
900	LCA903412	4	Inlet/Outlet	90	84	92	98	96	93	88	80	80
900	LCA903414	4	Inlet/Outlet	90	84	92	98	96	93	88	80	80
900	LCA903416	4	Inlet/Outlet	90	84	92	98	96	93	88	80	80
900	LCA903418	4	Inlet/Outlet	91	85	93	99	97	94	89	81	81
900	LCA903420	4	Inlet/Outlet	91	85	93	99	97	94	89	81	81
900	LCA903422	4	Inlet/Outlet	91	85	93	99	97	94	89	81	81
900	LCA903424	4	Inlet/Outlet	91	85	93	99	97	94	89	81	81
900	LCA903426	4	Inlet/Outlet	92	86	94	100	98	95	90	82	82
900	LCA903428	4	Inlet/Outlet	92	86	94	100	98	95	90	82	82
900	LCA903430	4	Inlet/Outlet	92	86	94	100	98	95	90	82	82
900	LCA903432	4	Inlet/Outlet	92	86	94	100	98	95	90	82	82
900	LCA903434	4	Inlet/Outlet	92	86	94	100	98	95	90	82	82
900	LCA903436	4	Inlet/Outlet	92	86	94	100	98	95	90	82	82
900	LCA903438	4	Inlet/Outlet	92	86	94	100	98	95	90	82	82
900	LCA903440	4	Inlet/Outlet	92	86	94	100	98	95	90	82	82

Performance Curve

LCA100 - 3 Phase - 4 Pole



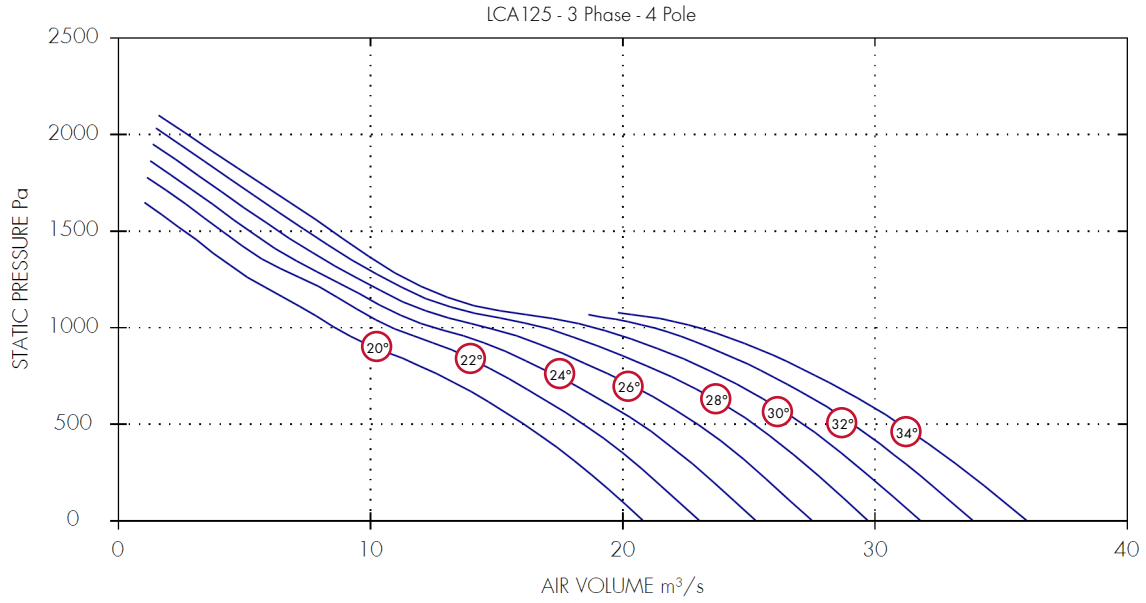
Performance Guide

Dia.	Stock Ref	3 Phase Poles	rpm	IP Rating	Curve Ref	m³/s at Pa					Motor kW	dBA @3m
						0	150	300	450	600		
1000	LCA1003410	4	1440	IP55	10°	6.5	5.68	4.63	3.18	1.14	4	89
1000	LCA1003412	4	1440	IP55	12°	7.66	6.85	5.79	4.31	2.11	4	89
1000	LCA1003414	4	1440	IP55	14°	8.83	8.01	6.94	5.41	3.04	5.5	89
1000	LCA1003416	4	1440	IP55	16°	10.02	9.17	8.06	6.48		5.5	89
1000	LCA1003418	4	1440	IP55	18°	11.23	10.3	9.15	7.51		7.5	89
1000	LCA1003420	4	1440	IP55	20°	12.4	11.41	10.2	8.5		7.5	89
1000	LCA1003422	4	1440	IP55	22°	13.51	12.47	11.22	9.49		7.5	89
1000	LCA1003424	4	1440	IP55	24°	14.53	13.5	12.23	10.49		11	89
1000	LCA1003426	4	1440	IP55	26°	15.45	14.47	13.23	11.53		11	89
1000	LCA1003428	4	1440	IP55	28°	16.33	15.41	14.24	12.6		15	89
1000	LCA1003430	4	1440	IP55	30°	17.31	16.4	15.24	13.6		15	89
1000	LCA1003432	4	1440	IP55	32°	18.48	17.47	16.21	14.48		15	89
1000	LCA1003434	4	1440	IP55	34°	19.74	18.58	17.15	15.26		18.5	89
1000	LCA1003436	4	1440	IP55	36°	20.93	19.64	18.07	16		18.5	89
1000	LCA1003438	4	1440	IP55	38°	22.01	20.64	18.98	16.71		18.5	89
1000	LCA1003440	4	1440	IP55	40°	23.03	21.6	19.87	17.41		22	89

Sound Power Level Spectra dB (ref 10⁻¹² Watts)

Dia.	3 Phase Stock Ref	Poles	Spectrum	dB								dBA @3m
				63	125	250	500	1k	2k	4k	8k	
1000	LCA1003410	4	Inlet/Outlet	99	94	101	106	106	102	97	89	89
1000	LCA1003412	4	Inlet/Outlet	99	94	101	106	106	102	97	89	89
1000	LCA1003414	4	Inlet/Outlet	99	94	101	106	106	102	97	89	89
1000	LCA1003416	4	Inlet/Outlet	99	94	101	106	106	102	97	89	89
1000	LCA1003418	4	Inlet/Outlet	99	94	101	106	106	102	97	89	89
1000	LCA1003420	4	Inlet/Outlet	99	94	101	106	106	102	97	89	89
1000	LCA1003422	4	Inlet/Outlet	99	94	101	106	106	102	97	89	89
1000	LCA1003424	4	Inlet/Outlet	99	94	101	106	106	102	97	89	89
1000	LCA1003426	4	Inlet/Outlet	99	94	101	106	106	102	97	89	89
1000	LCA1003428	4	Inlet/Outlet	99	94	101	106	106	102	97	89	89
1000	LCA1003430	4	Inlet/Outlet	99	94	101	106	106	102	97	89	89
1000	LCA1003432	4	Inlet/Outlet	99	94	101	106	106	102	97	89	89
1000	LCA1003434	4	Inlet/Outlet	99	94	101	106	106	102	97	89	89
1000	LCA1003436	4	Inlet/Outlet	99	94	101	106	106	102	97	89	89
1000	LCA1003438	4	Inlet/Outlet	99	94	101	106	106	102	97	89	89
1000	LCA1003440	4	Inlet/Outlet	99	94	101	106	106	102	97	89	89

Performance Curve



Performance Guide

Dia.	3 Phase			IP Rating	Curve Ref	m³/s at Pa								Motor kW	dBA @3m	
	Stock Ref	Poles	rpm			0	250	500	750	1000	1250	1500	1750			2000
1250	LCA1253420	4	1475	IP55	20°	20.81	18.64	16.07	12.79	8.59	5.26	2.6			22	83
1250	LCA1253422	4	1475	IP55	22°	23.03	20.92	18.43	15.28	10.86	7.33	4.1	1.46		30	84
1250	LCA1253424	4	1475	IP55	24°	25.27	23.16	20.69	17.37	12.55	8.47	5.18	2.51		30	85
1250	LCA1253426	4	1475	IP55	26°	27.51	25.39	22.96	19.57	14.61	9.54	6.33	3.58		37	86
1250	LCA1253428	4	1475	IP55	28°	29.72	27.6	25.18	21.83	16.82	10.6	7.46	4.64	1.84	37	87
1250	LCA1253430	4	1475	IP55	30°	31.81	29.62	27.15	23.86	18.86	11.45	8.46	5.62	2.71	37	87
1250	LCA1253432	4	1475	IP55	32°	33.89	31.63	29.13	25.88	21.13					45	88
1250	LCA1253434	4	1475	IP55	34°	36.01	33.63	30.98	27.66	22.97					45	88

Sound Power Level Spectra dB (ref 10⁻¹² Watts)

Dia.	3 Phase			Spectrum	dB								dBA @3m
	Stock Ref	Poles			63	125	250	500	1k	2k	4k	8k	
1250	LCA1253420	4	Inlet/Outlet	98	105	101	100	98	95	92	89	83	
1250	LCA1253422	4	Inlet/Outlet	99	106	102	101	99	96	93	90	84	
1250	LCA1253424	4	Inlet/Outlet	100	107	103	102	100	97	94	91	85	
1250	LCA1253426	4	Inlet/Outlet	101	108	104	103	101	98	95	92	86	
1250	LCA1253428	4	Inlet/Outlet	102	109	105	104	102	99	96	93	87	
1250	LCA1253430	4	Inlet/Outlet	102	109	105	104	102	99	96	93	87	
1250	LCA1253432	4	Inlet/Outlet	103	110	106	105	103	100	97	94	88	
1250	LCA1253434	4	Inlet/Outlet	103	110	106	105	103	100	97	94	88	

Electrical Details

1 Phase 2 Pole

Stock Ref	rpm	Pitch Angle	Motor kW	S.C. Amps	F.L.C Amps	Starting Method	Starter Ref	Overload Ref	Transform Controller	*eDemand Controller		
										Voltage Control	1/3 Phase Inverter	3 Phase Inverter
LCA25	2800	25°-40°	0.37	8	2.6	D.O.L.	444744	444702	-	-	-	-
LCA31	2800	10°-24°	0.37	8	2.6	D.O.L.	444744	444702	-	-	-	-
LCA31	2800	26°-32°	0.55	14	3.6	D.O.L.	444744	444703	-	-	-	-
LCA31	2800	34°-38°	0.75	16	4.5	D.O.L.	444744	444703	-	-	-	-
LCA35	2800	10°-12°	0.55	14	3.6	D.O.L.	444744	444703	-	-	-	-
LCA35	2800	22°-26°	0.75	16	4.5	D.O.L.	444744	444703	-	-	-	-
LCA35	2800	28°-34°	1.1	23	6.6	D.O.L.	444744	444704	-	-	-	-
LCA35	2800	36°-38°	1.5	31	8.5	D.O.L.	444744	444705	-	-	-	-
LCA40	2800	10°-12°	0.55	14	3.6	D.O.L.	444744	444703	-	-	-	-
LCA40	2800	14°-18°	0.75	16	4.5	D.O.L.	444744	444704	-	-	-	-
LCA40	2800	20°-24°	1.1	23	6.6	D.O.L.	444744	444704	-	-	-	-
LCA40	2800	26°-32°	1.5	31	8.5	D.O.L.	444744	444705	-	-	-	-

*1 phase 2 pole is not speed controllable

3 Phase 2 Pole

Stock Ref	rpm	Pitch Angle	Motor kW	S.C. Amps	F.L.C Amps	Starting Method	Starter Ref	Overload Ref	Transform Controller	eDemand Controller		
										Voltage Control	1/3 Phase Inverter	3 Phase Inverter
LCA25	2800	25°-40°	0.37	5.82	0.97	D.O.L.	444747	444700	-	-	444177	444172
LCA31	2800	10°-24°	0.37	5.82	0.97	D.O.L.	444747	444700	-	-	444177	444172
LCA31	2800	26°-32°	0.55	8.52	1.42	D.O.L.	444747	444701	-	-	444177	444172
LCA31	2800	34°-38°	0.75	10.62	1.77	D.O.L.	444747	444701	-	-	444177	444172
LCA35	2800	10°-12°	0.37	5.82	0.97	D.O.L.	444747	444700	-	-	444177	444172
LCA35	2800	14°-20°	0.55	8.52	1.42	D.O.L.	444747	444701	-	-	444177	444172
LCA35	2800	22°-26°	0.75	10.62	1.77	D.O.L.	444747	444701	-	-	444177	444172
LCA35	2800	28°-34°	1.1	15.06	2.51	D.O.L.	444747	444702	-	-	444177	444173
LCA35	2800	36°-38°	1.5	19.68	3.28	D.O.L.	444747	444702	-	-	444177	444173
LCA35	2800	40°	2.2	27.66	4.61	D.O.L.	444747	444703	-	-	-	444174
LCA40	2800	10°-12°	0.55	8.52	1.42	D.O.L.	444747	444701	-	-	444177	444172
LCA40	2800	14°-18°	0.75	10.62	1.77	D.O.L.	444747	444701	-	-	444177	444172
LCA40	2800	20°-26°	1.1	15.06	2.51	D.O.L.	444747	444702	-	-	444177	444173
LCA40	2800	28°-32°	1.5	19.68	3.28	D.O.L.	444747	444702	-	-	444177	444173
LCA40	2800	34°-38°	2.2	27.66	4.61	D.O.L.	444744	444703	-	-	-	444174
LCA40	2800	40°	3	42.2	6.03	D.O.L.	444747	444704	-	-	-	444174
LCA45	2880	10°-12°	1.1	15.06	2.51	D.O.L.	444747	444702	-	-	444177	444173
LCA45	2880	14°-18°	1.5	19.68	3.28	D.O.L.	444747	444702	-	-	444177	444173
LCA45	2880	20°-26°	2.2	27.66	4.61	D.O.L.	444747	444703	-	-	444177	444173
LCA45	2880	28°-32°	3	42.2	6.03	D.O.L.	444747	444704	-	-	-	444174
LCA50	2880	10°-12°	1.5	19.68	3.28	D.O.L.	444747	444702	-	-	444177	444173
LCA50	2880	14°-18°	2.2	27.66	4.61	D.O.L.	444747	444703	-	-	-	444174
LCA50	2880	20°-24°	3	42.2	6.03	D.O.L.	444747	444704	-	-	-	444174
LCA50	2880	26°-30°	4	59.1	7.88	D.O.L.	444747	444705	-	-	-	444175
LCA50	2880	32°-36°	5.5	78.8	10.5	D.O.L.	444748	444706	-	-	-	444175

Speed Controllers

Used in conjunction with speed controllable fans Vent-Axia offers a choice of speed controllers, the traditional Five-Step Auto Transformer or the Inverter Speed Controller.

The Five-Step-Auto Transformer provides five stepped speed settings without the electronic motor harmonic noise associated with all electronic or solid state type Speed Controllers.

eDemand Speed Controllers & Inverters see Accessories & Controllers Section.

Electrical Details

3 Phase 2 Pole

Stock Ref	rpm	Pitch Angle	Motor kW	S.C. Amps	F.L.C Amps	Starting Method	Starter Ref	Overload Ref	Transform Controller	eDemand Controller		
										Voltage Control	1/3 Phase Inverter	3 Phase Inverter
ICA50	2880	38°-40°	7.5	106	14.1	D.O.L	444748	444707	-	-	-	444176
ICA56	2880	10°-14°	4	59.1	7.88	D.O.L	444747	444705	-	-	-	444175
ICA56	2880	16°-18°	5.5	78.8	10.5	D.O.L	444748	444706	-	-	-	444175
ICA56	2880	20°-24°	7.5	106	14.1	D.O.L	444748	444707	-	-	-	444176
ICA63	2940	10°-12°	5.5	78.8	10.5	D.O.L	444748	444706	-	-	-	444175
ICA63	2940	14°-16°	7.5	106	14.1	D.O.L	444748	444707	-	-	-	444176
ICA63	2940	18°-22°	11	52.3	20.9	Star Delta	444843	444707	-	-	-	-
ICA63	2940	24°-28°	15	75.3	30.1	Star Delta	-	-	-	-	-	-

1 Phase 4 Pole

Stock Ref	rpm	Pitch Angle	Motor kW	S.C. Amps	F.L.C Amps	Starting Method	Starter Ref	Overload Ref	Transform Controller	eDemand Controller		
										Voltage Control	1/3 Phase Inverter	3 Phase Inverter
ICA25	1400	25°-40°	0.25	5	2	D.O.L	444744	444701	10314103	444164	-	-
ICA31	1400	10°-38°	0.25	5	2	D.O.L	444744	444701	10314103	444164	-	-
ICA35	1400	10°-38°	0.25	5	2	D.O.L	444744	444701	10314103	444164	-	-
ICA40	1400	10°-36°	0.25	5	2	D.O.L	444744	444701	10314103	444164	-	-
ICA40	1400	38°-40°	0.37	7	2.9	D.O.L	444744	444702	10314105	444164	-	-
ICA45	1400	10°-24°	0.25	5	2	D.O.L	444744	444701	10314103	444164	-	-
ICA45	1400	26°-32°	0.37	7	2.9	D.O.L	444744	444702	10314105	444164	-	-
ICA45	1400	34°-40°	0.55	11	3.9	D.O.L	444744	444703	10314105	444164	-	-
ICA50	1400	10°-18°	0.25	5	2	D.O.L	444744	444701	10314103	444164	-	-
ICA50	1400	20°-26°	0.37	7	2.9	D.O.L	444744	444702	10314105	444164	-	-
ICA50	1400	28°-34°	0.55	11	3.9	D.O.L	444744	444703	10314105	444164	-	-
ICA50	1400	36°-40°	0.75	15	5.3	D.O.L	444744	444704	10314107	444165	-	-
ICA56	1400	10°-16°	0.55	11	3.9	D.O.L	444744	444703	10314105	444164	-	-
ICA56	1400	18°-22°	0.75	15	5.3	D.O.L	444744	444704	10314107	444165	-	-
ICA56	1400	24°-30°	1.1	22	7	D.O.L	444744	444705	10314120	444165	-	-
ICA56	1400	32°-36°	1.5	32	9.3	D.O.L	444744	444706	10314120	-	-	-
ICA63	1400	10°-12°	0.55	11	3.9	D.O.L	444744	444703	10314105	444164	-	-
ICA63	1400	14°-16°	0.75	15	5.3	D.O.L	444744	444704	10314107	444165	-	-
ICA63	1400	18°-24°	1.1	22	7	D.O.L	444744	444705	10314120	444165	-	-
ICA63	1400	22°-26°	1.5	32	9.3	D.O.L	444744	444706	10314120	-	-	-

3 Phase 4 Pole

Stock Ref	rpm	Pitch Angle	Motor kW	S.C. Amps	F.L.C Amps	Starting Method	Starter Ref	Overload Ref	Transform Controller	eDemand Controller		
										Voltage Control	1/3 Phase Inverter	3 Phase Inverter
ICA25	1400	25°-40°	0.25	4.26	0.71	D.O.L	444747	444699	10314301	444166	444177	444172
ICA31	1400	10°-38°	0.25	5.04	0.84	D.O.L	444747	444699	10314301	444166	444177	444172
ICA35	1400	10°-38°	0.25	5.04	0.84	D.O.L	444747	444699	10314301	444166	444177	444172
ICA40	1400	10°-26°	0.25	5.04	0.84	D.O.L	444747	444699	10314301	444166	444177	444172
ICA40	1400	28°-38°	0.25	5.04	0.84	D.O.L	444747	444699	10314301	444166	444177	444172
ICA40	1400	40°	0.37	6.66	1.11	D.O.L	444747	444700	10314301	444166	444177	444172

Speed Controllers

Used in conjunction with speed controllable fans Vent-Axia offers a choice of speed controllers, the traditional Five-Step Auto Transformer or the Inverter Speed Controller.

The Five-Step-Auto Transformer provides five stepped speed settings without the electronic motor harmonic noise associated with all electronic or solid state type Speed Controllers.

eDemand Speed Controllers & Inverters see Accessories and Controls Section.

Electrical Details

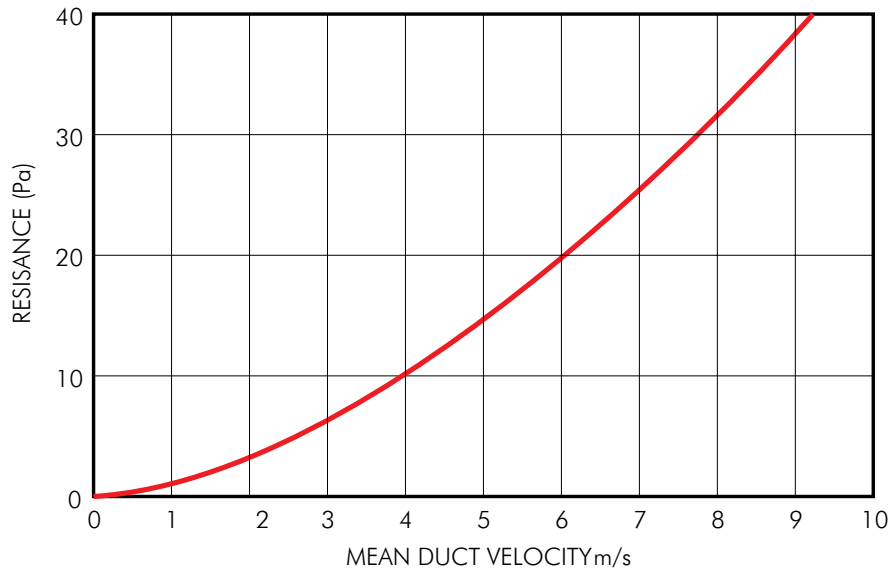
3 Phase 4 Pole

Stock Ref	rpm	Pitch Angle	Motor kW	S.C. Amps	F.L.C Amps	Starting Method	Starter Ref	Overload Ref	Transform Controller	eDemand Controller		
										Voltage Control	1/3 Phase Inverter	3 Phase Inverter
ICA45	1400	10°-24°	0.25	5.04	0.84	D.O.L	444747	444699	10314301	444166	444177	444172
ICA45	1400	26°-32°	0.37	6.66	1.11	D.O.L	444747	444700	10314301	444166	444177	444172
ICA45	1400	34°-40°	0.55	9.48	1.58	D.O.L	444747	444701	10314304	444166	444177	444172
ICA50	1400	10°-18°	0.25	5.04	0.84	D.O.L	444747	444699	10314301	444166	444177	444172
ICA50	1400	20°-26°	0.37	6.66	1.11	D.O.L	444747	444700	10314301	444166	444177	444172
ICA50	1400	28°-34°	0.55	9.48	1.58	D.O.L	444747	444701	10314304	444166	444177	444172
ICA50	1400	36°-40°	0.75	11.58	1.93	D.O.L	444747	444701	10314304	444166	444177	444172
ICA56	1400	10°-16°	0.55	9.48	1.58	D.O.L	444747	444701	10314304	444166	444177	444172
ICA56	1400	18°-22°	0.75	11.58	1.93	D.O.L	444747	444702	10314304	444166	444177	444172
ICA56	1400	24°-30°	1.1	15.84	2.64	D.O.L	444747	444702	10314304	444166	444177	444173
ICA56	1400	32°-36°	1.5	20.7	3.45	D.O.L	444747	444702	10314304	444166	444177	444173
ICA56	1400	38°-40°	2.2	33.9	4.84	D.O.L	444747	444703	10314307	444167	-	444174
ICA63	1400	10°	0.55	9.48	1.58	D.O.L	444747	444701	10314304	444166	444177	444172
ICA63	1400	12°-14°	0.75	11.58	1.93	D.O.L	444747	444701	10314304	444166	444177	444172
ICA63	1400	16°-18°	1.1	15.84	2.64	D.O.L	444747	444702	10314304	444166	444177	444173
ICA63	1400	22°-26°	1.5	20.7	3.45	D.O.L	444747	444702	10314307	444166	444177	444173
ICA63	1400	28°-34°	2.2	33.9	4.84	D.O.L	444747	444703	10314307	444167	-	444174
ICA63	1400	36°-40°	3	45.3	6.47	D.O.L	444747	444704	10314311	444167	-	444174
ICA71	1420	10°	0.75	11.58	1.93	D.O.L	444747	444701	10314304	444166	444177	444172
ICA71	1420	12°-14°	1.1	15.84	2.64	D.O.L	444747	444702	10314304	444166	444177	444173
ICA71	1420	16°-18°	1.5	20.7	3.45	D.O.L	444747	444702	10314304	444166	444177	444173
ICA71	1420	20°-24°	2.2	33.9	4.84	D.O.L	444747	444703	10314307	444167	-	444174
ICA71	1420	26°-30°	3	45.3	6.47	D.O.L	444747	444704	10314311	444167	-	444174
ICA71	1420	32°-36°	4	57.8	8.26	D.O.L	444747	444705	10314311	444167	-	444175
ICA71	1420	38°-40°	5.5	77	11	D.O.L	444748	444706	-	444168	-	444175
ICA80	1420	10°-12°	2.2	33.9	4.84	D.O.L	444747	444703	10314307	444167	-	444174
ICA80	1440	14°-20°	3	45.3	6.47	D.O.L	444747	444704	10314311	444167	-	444174
ICA80	1440	22°-24°	4	57.8	8.26	D.O.L	444747	444705	10314311	444167	-	444175
ICA80	1440	26°-28°	5.5	77	11	D.O.L	444748	444706	-	444168	-	444175
ICA80	1440	30°-34°	7.5	102.2	14.6	D.O.L	444748	444707	-	-	-	444176
ICA80	1440	36°-40°	11	52.3	20.9	Star Delta	444843	444707	-	-	-	-
ICA90	1440	10°	3	45.3	6.47	D.O.L	444747	444704	10314311	444167	-	444174
ICA90	1440	12°-16°	4	57.8	8.26	D.O.L	444747	444705	10314311	444167	-	444175
ICA90	1440	18°-20°	5.5	77	11	D.O.L	444748	444706	-	444168	-	444175
ICA90	1440	22°-26°	7.5	102.2	14.6	D.O.L	444748	444707	-	-	-	444176
ICA90	1440	28°-32°	11	52.3	20.9	Star Delta	444843	444707	-	-	-	-
ICA90	1440	34°-40°	15	75.3	30.1	Star Delta	-	-	-	-	-	-
ICA100	1440	10°-12°	4	57.8	8.26	D.O.L	444747	444705	10314311	444167	-	444175
ICA100	1440	14°-16°	5.5	77	11	D.O.L	444748	444706	-	444168	-	444175
ICA100	1440	18°-22°	7.5	102.2	14.6	D.O.L	444748	444707	-	-	-	444176
ICA100	1440	24°-26°	11	52.3	20.9	Star Delta	444843	444707	-	-	-	-
ICA100	1440	28°-32°	15	75.3	30.1	Star Delta	-	-	-	-	-	-
ICA100	1440	34°-38°	18.5	86	34.3	Star Delta	-	-	-	-	-	-
ICA100	1440	40°	22	102	40.6	Star Delta	-	-	-	-	-	-
ICA125	1475	20°	22	102	40.6	Star Delta	-	-	-	-	-	-
ICA125	1475	22°-24°	30	131	54.7	Star Delta	-	-	-	-	-	-
ICA125	1475	26°-30°	37	159	66.4	Star Delta	-	-	-	-	-	-
ICA125	1475	32°-34°	45	193	80.5	Star Delta	-	-	-	-	-	-

Fan Attenuator Details

An attenuator without Pod offers negligible resistance to air flow, and therefore the pressure loss can be considered to be the same as that for the equivalent length of ducting.

Resistance Graph for Axial Attenuator with Pod



Attenuator Insertion Loss Data

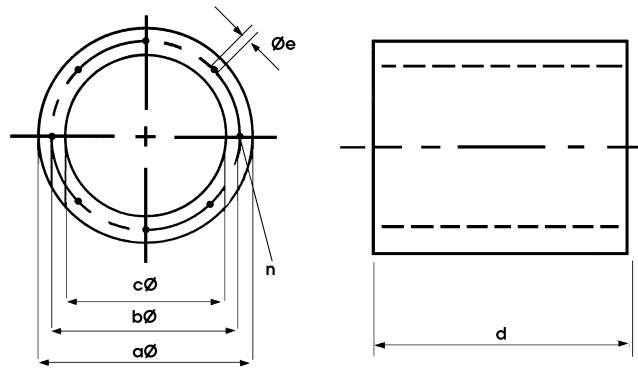
Dia	Stock Ref	63	125	250	500	1k	2k	4k	8k	kg approx
250	10514250	2	3	6	11	16	11	10	6	20
315	10514315	2	3	6	11	16	11	10	6	22
355	10514355	2	3	6	12	16	11	10	6	30
400	10514400	2	3	6	13	16	12	10	6	41
450	10514450	2	4	6	14	17	12	10	6	50
500	10514500	3	4	7	14	17	14	11	7	59
560	10514560	2	4	8	15	18	14	11	7	70
630	10514630	3	4	8	16	18	14	11	7	82
710	10514710	1	2	6	9	12	10	6	2	90
800	10514800	1	2	6	9	12	10	6	2	100
900	10514900	1	2	6	9	12	10	6	2	145
1000	10514000	1	2	6	9	12	10	6	2	184
1250	105141250	1	2	6	9	12	10	6	2	150

Melinex lined attenuators are available on request

Case Axial Attenuator Fitted with Pod Insertion Losses

Dia	Stock Ref	63	125	250	500	1k	2k	4k	8k	kg approx
315	10500315	6	7	12	18	27	25	22	19	32
355	10500355	3	8	12	18	28	26	22	19	44
400	10500400	3	8	12	18	28	26	23	19	60
450	10500450	4	8	14	20	28	26	23	19	73
500	10500500	4	8	14	20	29	26	23	19	87
560	10500560	4	9	14	20	29	26	23	19	102
630	10500630	4	9	14	20	29	26	23	19	120
710	10500710	6	10	20	30	35	28	25	22	134
800	10500800	6	10	20	30	35	28	25	22	149
900	10500900	6	10	20	30	35	28	25	22	211
1000	105001000	6	10	20	30	35	28	25	22	267
1250	105001250	6	10	17	28	27	21	18	17	222

Attenuator Dimensions (mm)

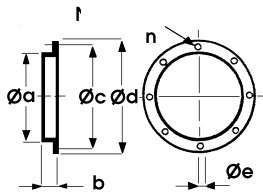


Model	Stock		a Ø	b Ø	c Ø	d	e Ø	n
	Ref							
LCA25	10514250		350	292	254	375	M8	4
LCA31	10514315		415	355	315	475	M8	8
LCA35	10514355		455	395	355	540	M8	8
LCA40	10514400		500	450	400	600	M10	8
LCA45	10514450		550	500	450	675	M10	8
LCA50	10514500		600	560	500	750	M10	12
LCA56	10514560		660	620	560	810	M10	12
LCA63	10514630		730	690	630	940	M10	12
LCA71	10514710		814	700	710	1070	M10	16
LCA80	10514800		900	860	796	1200	M10	16
LCA90	10514900		999	970	893	1350	M10	16
LCA100	105141000		1108	1070	1070	1500	M10	16
LCA125	105141250		1350	1320	1250	1875	M10	20

Accessory Dimensions (mm)

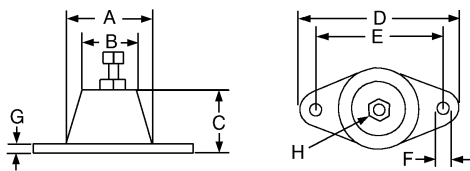
Coupling Flange

Rolled from mild steel. Dimensionally matched to fan flange and fixing holes.



Stock Ref	a Ø	b	c Ø	d Ø	e Ø	n
10506250	335	30	295	250	10	8
10506315	385	30	355	315	10	8
10506355	425	45	395	355	10	8
10506400	480	45	450	400	12	8
10506450	530	60	500	450	12	8
10506500	590	0	560	500	12	12
10506560	650	75	620	560	12	12
10506630	720	75	690	630	12	12
10506710A	800	40	770	710	12	16
10506800A	890	40	860	800	12	16
10506900A	1038	50	970	900	14	16
105061000A	1138	50	1070	1000	14	16
105061250A	1390	83	1320	1250	15	20

Anti-Vibration Mounts



Max. Load

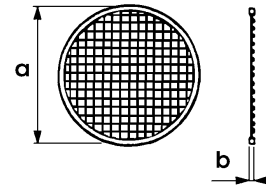
*Stock Ref	A	B	C	D	E	F	G	H	kg
68MP033G	37	26	27	67	54	7	3	M 8	23
68MP055B	37	26	27	67	54	7	3	M8	36
68MP133G	57	46	35	95	76	10.5	4	M12	91
68MP165R	57	46	35	95	76	10.5	4	M12	245

*supplied as a set of 4.

Inlet Wire Guard

'K' factor loss 0.25

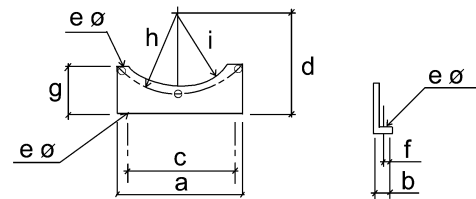
Available for direct fixing to either side of the fan using flange sizing holes. Constructed to meet BS 848 Part 5.



Stock Ref	a	b
10505250	330	3
10505315	380	3
10505355	420	3
10505400	475	3
10505450	525	3
10505500	595	3
10505560	655	3
10505630	725	3
10505710	784	10
10505800	870	10
10505900	970	10
105051000	1090	10
105051250	1370	10

For more information on the 'K' factor, refer to General Information Section

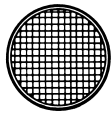
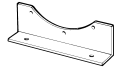
Mounting Feet



*Stock Ref	a	b	c	d	e	f	g	h	i
10503250	232	24	180	240	10	14	115	146	130
10503315	275	24	224	240	10	14	115	177.5	167
10503355	303	24	250	250	10	14	125	197.5	187
10503400	348	24	280	300	12	14	135	225	213
10503450	384	24	315	360	12	14	155	250	238
10503500	425	24	315	360	12	14	135	280	268
10503560	475	24	355	355	12	14	155	310	298
10503630	520	24	400	400	12	14	175	345	333
10503710A	710	40	610	435	13	18	240	385	365
10503800A	800	40	700	480	13	18	262	430	410
10503900A	900	40	800	535	13	18	288	485	460
105031000A	1000	40	900	580	15	18	314	535	510
105031250A	1250	80	1150	868	15	26	366	660	640

*Set of 2 feet

Accessories



Model Ref	Mounting Feet - set of 2 Stock Ref	Inlet Wire Guard Stock Ref	Coupling Flange Stock Ref	*Ancillary Pack Stock Ref	Axial Attenuator Stock Ref	Attenuator inc. Pod Stock Ref	** Anti Vibration Mount Stock Ref
LCA25	10503250	10505250	10506250	10513250	10514250	-	68MP033G
LCA31	10503315	10505315	10506315	10513315	10514315	10500315	68MP033G
LCA35	10503355	10505355	10506355	10513355	10514355	10500355	68MP033G
LCA40	10503400	10505400	10506400	10513400	10514400	10500400	68MP033G
LCA45	10503450	10505450	10506450	10513450	10514450	10500450	68MP033G
LCA50	10503500	10505500	10506500	10513500	10514500	10500500	68MP033G
LCA56	10503560	10505560	10506560	10513560	10514560	10500560	68MP033G
LCA63	10503630	10505630	10506630	10513630	10514630	10500630	68MP033G
LCA71	10503710A	10505710	10506710A	10513710A	10514710A	10500710	68MP055B
LCA80	10503800A	10505800	10506800A	10513800A	10514800A	10500800	68MP055B
LCA90	10503900A	10505900	10506900A	10513900A	10514900A	10500900	68MP133G
LCA100	105031000A	105051000	105061000A	105131000A	105141000A	105001000	68MP133G
LCA125	105031250A	105051250	105061250A	105131250A	105141250A	105001250	68MP165R

*consists of 2 Matching Flanges, 2 Flexible Connectors, 2 Mounting Feet, 4 Anti Vibration Mounts, 4 Worm Drive Clips

Typical Installation

