



**Vent-Axia**<sup>®</sup>

Improving Indoor Air Quality since 1936

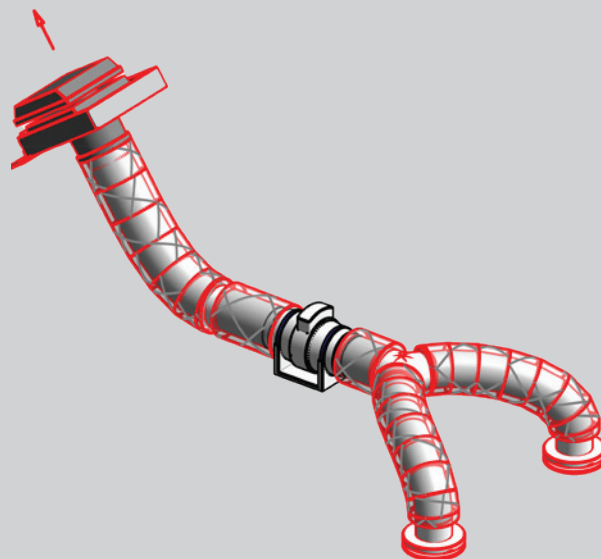
## NBR CoolBox Kits

Edition 1

[www.vent-axia.com](http://www.vent-axia.com)

# NBR CoolBox Kits

- Designed and manufactured in the UK
- Fully boxed solution to help combat overheating in dwellings
- On-demand overheating extraction.
- Sound levels complying with Part F Building Regulations
- 20l/s, 30l/s, and 50 l/s solutions
- Passive supply replacement air option
- Local room control via remote switches or in room temperature sensors (by others)
- Easy to commission with predetermined speeds



## Ducted Ventilation

Vent-Axia has designed a complete all in one boxed solution to help satisfy overheating requirements in dwellings, whilst achieving low sound levels with a range of kits that include energy efficient Mixed Flow In-Line fans that are now quieter, offer two and half times the pressure of conventional axial fans and are dimensionally more compact making them ideal for overheating extraction.

## Motors

The motor speed is selected on installation as per the Installation Guidance Sheet, motors are fitted with Standard Thermal Overload Protection (S.T.O.P.). All sizes with capacitor run motors. All sizes are Class II appliances. Supply voltage 220-240V/1/50Hz.

## Installation

These units have a separate footplate for simple mounting and detachable spigots for simple connection to ducting. The motor body chassis rotates to provide connection in acute spaces. Cleaning the product is simple as all parts can be removed without removing the ducting.

## Models

### Coolbox kits

Coolbox Inline Fan with Acoustic Mat, Insulated Ducting, Acoustic Flexible Duct, Worm Drive Clips, Backdraught Shutter, Y-Piece (30 and 50 Kits only), Extract Diffuser and Roof Termination by others.

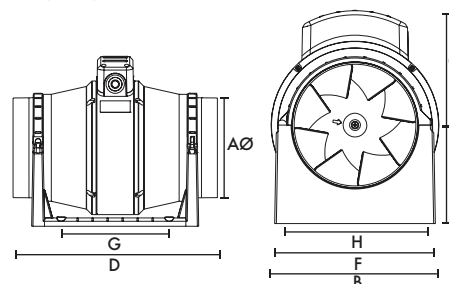
Model	Stock Ref	Airflow
NBR CoolBox 20	<b>412258</b>	20l/s
NBR CoolBox 30	<b>412259</b>	30l/s
NBR CoolBox 50	<b>412260</b>	50l/s

### Passive kit

Insulated Flexible Duct 3m, Backdraught Shutter, Reducer, Supply Diffuser, Worm Drive Clips and Roof Termination by others.

Model	Stock Ref	Airflow
NBR Passive Duct Kit	<b>412261</b>	>60l/s

## Dimensions (mm)



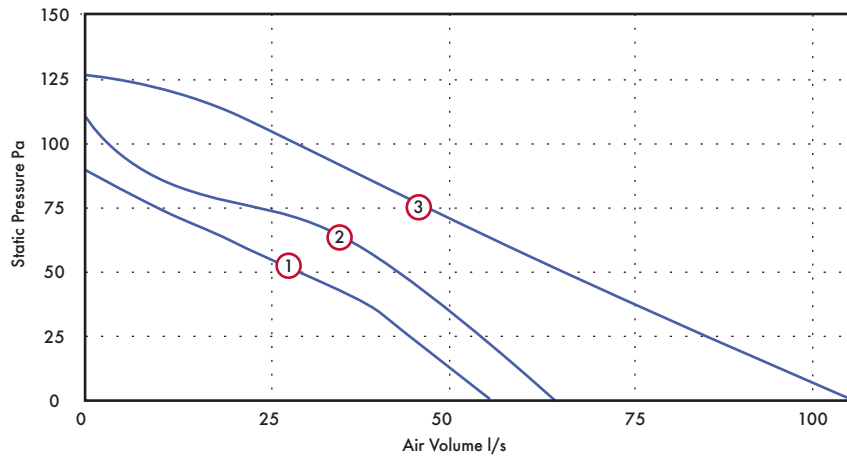
Model	NBR CoolBox	
	20/30	NBR CoolBox 50
AØ	122	147
B	178	200
C	124	138
D	259	350
E	96	118
F	168	192
G (fixing hole)	120	162
H (fixing hole)	153.5	178

## Sound Data and Performance Guide

The sound data is based on the kits provided and an external roof vent supplied by others that conforms to at least 90% effective free area of the size of duct being used.

This equates to  $\geq 15,537\text{mm}^2$  for the NBR CoolBox 50/Passive Duct kit and for the NBR CoolBox 20/30  $\geq 11,039\text{mm}^2$ . The pressure of the roof vent must not exceed more than 5pa for the NBR CoolBox 50/Passive Duct kit and must not exceed more than 5pa for the NBR Coolbox 20/30 to provide the below sound levels and assurances of flow rate at the valve.

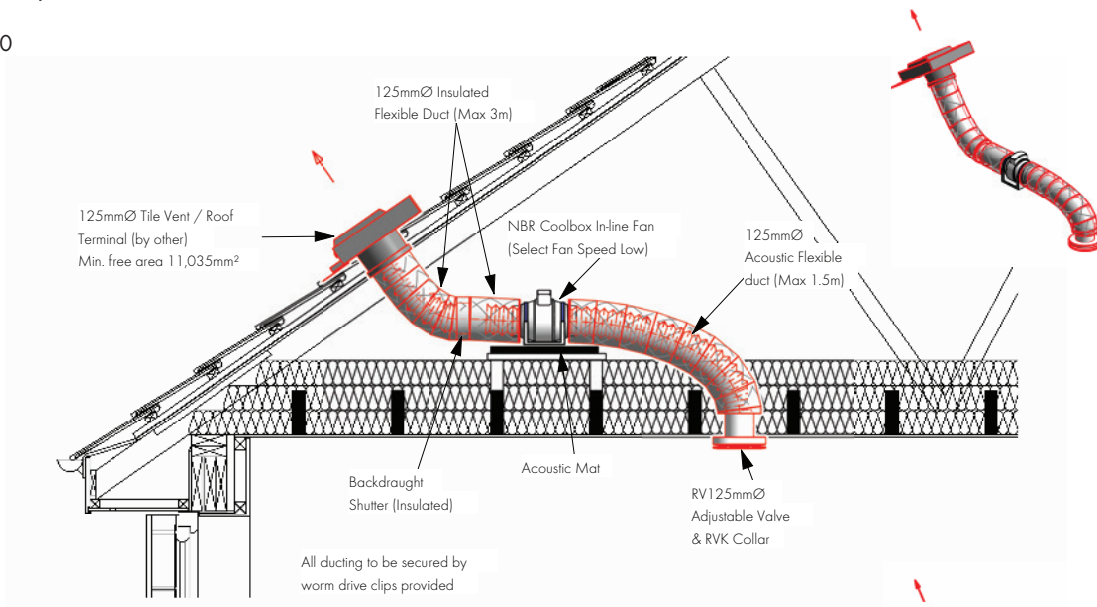
## Sound Data and Performance Guide



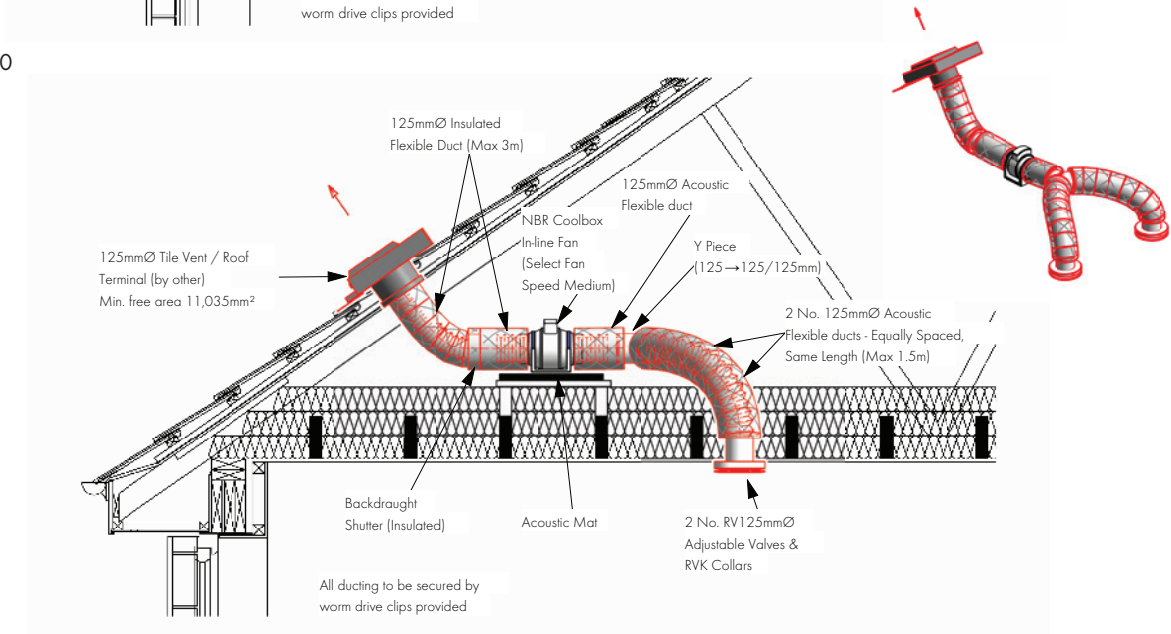
Model	Stock Ref	Flow Rate l/s	Dia mm	Speed	IP Rating	Curve Ref	Motor kW	F.L.C Amps	Estimated noise at 3m valve/s dB(A)
NBR CoolBox 20	412258	20	125	Low	IP44	1	0.03	0.12	25
NBR CoolBox 30	412259	30	125	Medium	IP44	2	0.03	0.12	22
NBR CoolBox 50	412260	50	150	Low	IP44	3	0.05	0.21	30
NBR Passive Duct Kit	412261	>60	150	n/a	n/a	n/a	n/a	n/a	n/a

## Installation Examples

### NBR CoolBox 20

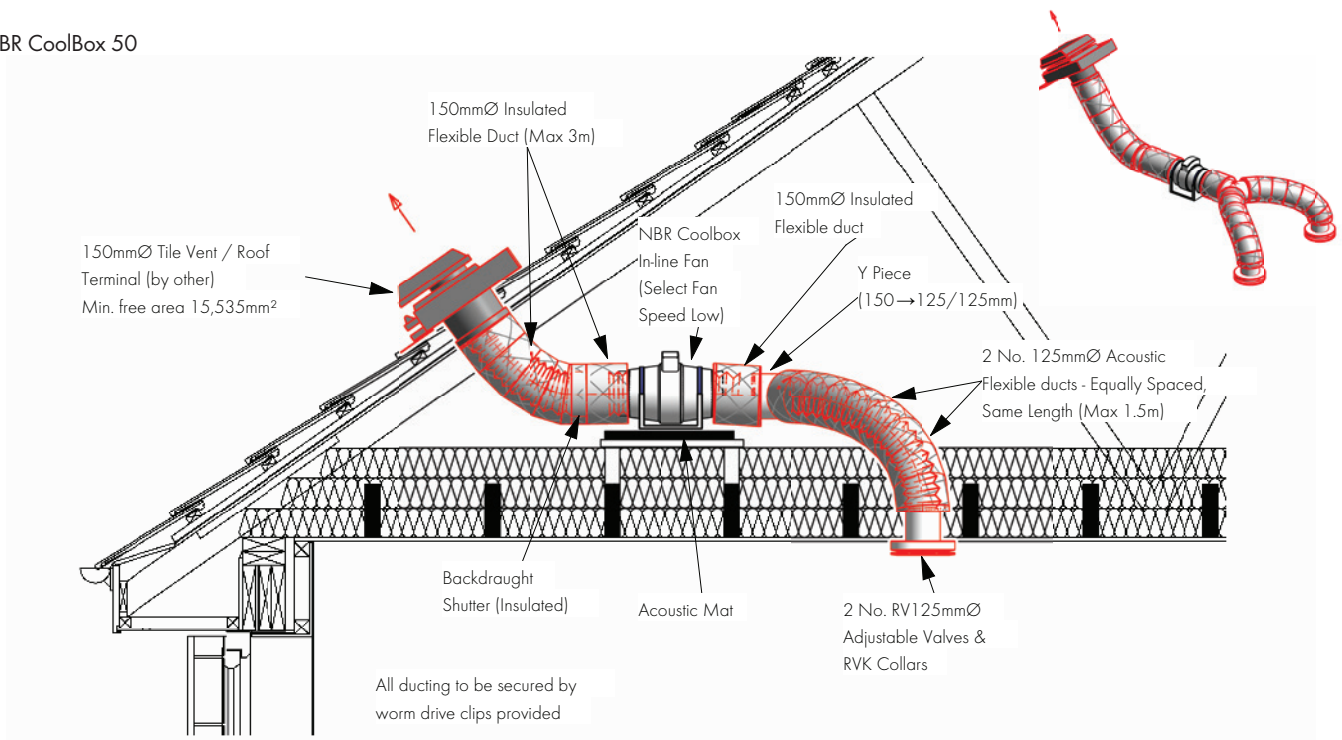


### NBR CoolBox 30

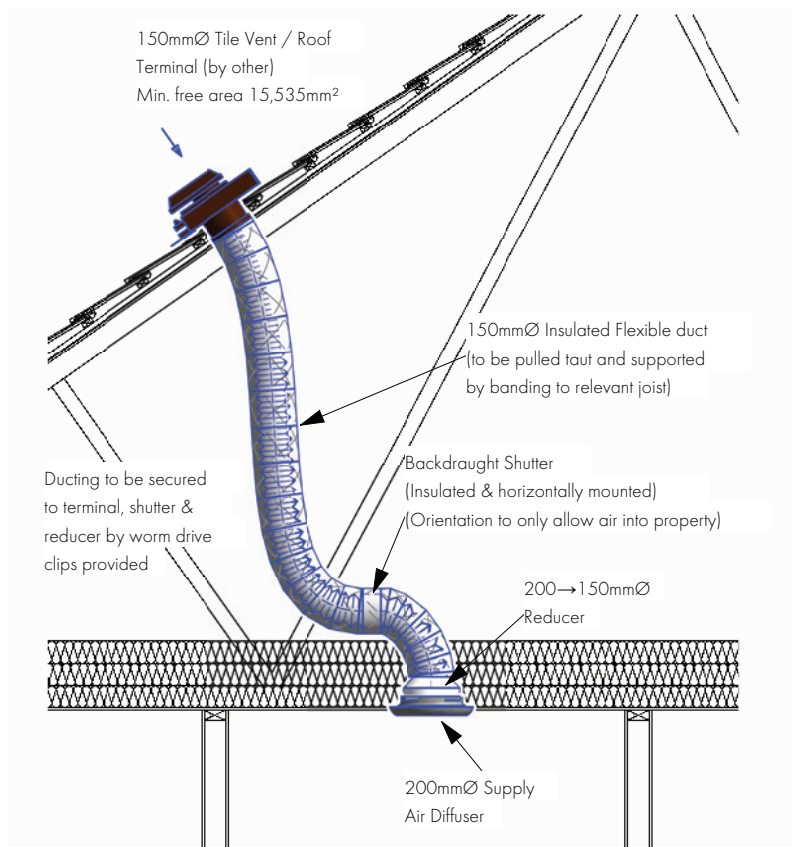


## Installation Examples

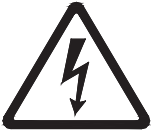
### NBR CoolBox 50




### NBR Passive Duct Kit



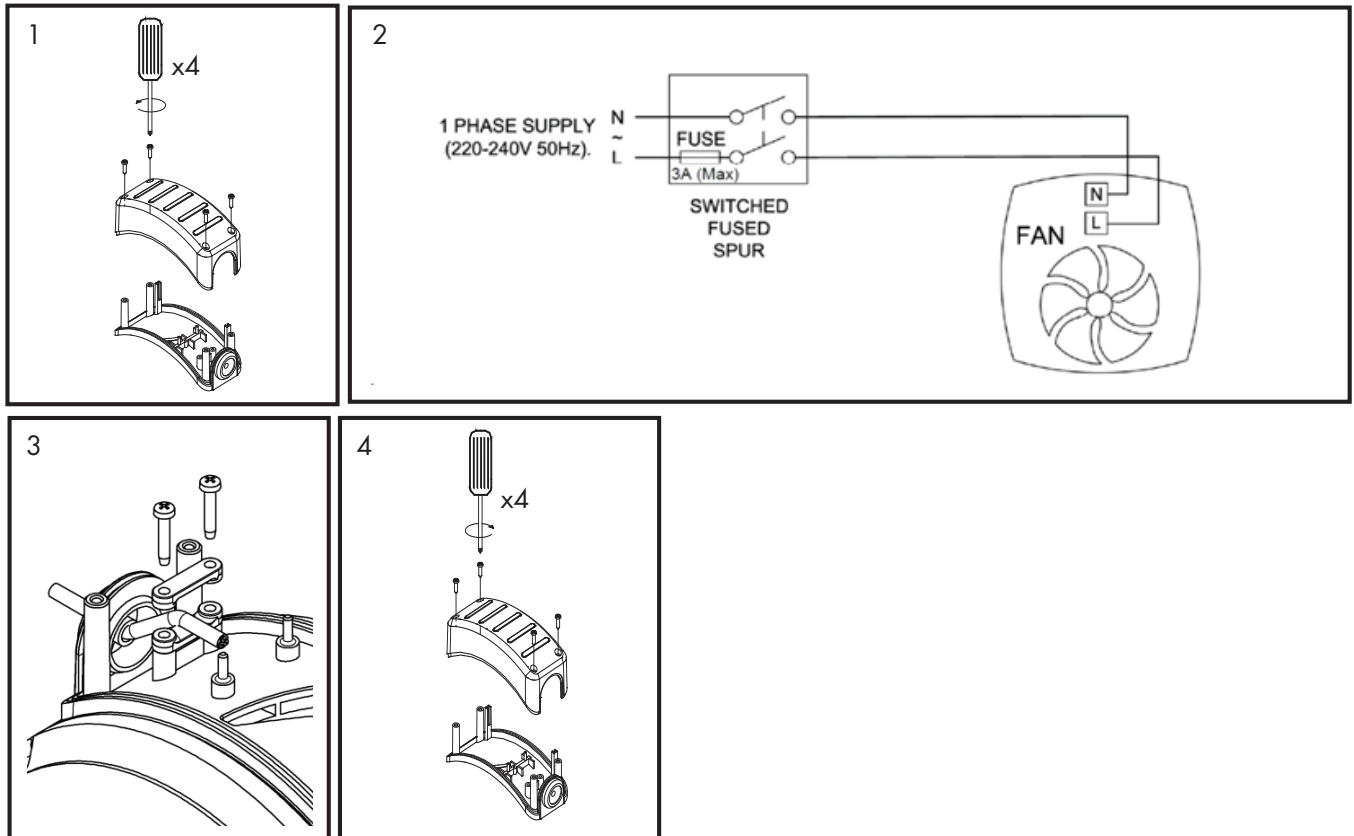
## Wiring Diagram



WARNING: THE FAN AND ANCILLARY CONTROL EQUIPMENT MUST BE ISOLATED FROM THE POWER SUPPLY DURING THE INSTALLATION / OR MAINTENANCE.

THE FANS ARE DOUBLE INSULATED AND CARRY A  MARK. THERE ARE NO EARTH TERMINALS AND THESE FANS MUST NOT BE EARTHED.

1. Remove terminal box cover & screws and put to one side (Fig. 1)
2. Follow the wiring diagram (Fig. 2).
3. Check all connections have been made correctly and ensure all terminal connections and cable clamps are securely fastened. (Fig 3)
4. The cable entry must be made using the cable grommet provided
5. Replace terminal box cover & screws (Fig. 4)
6. Ensure the impeller rotates and is free from obstructions.



## VENT-AXIA CONTACT NUMBERS

Free technical, installation and sales advice is available

Sales Tel:	0344 856 0590
Sales Fax:	01293 565169
Tech Support Tel:	0344 856 0594
Tech Support Fax:	01293 532814
Web:	<a href="http://www.vent-axia.com">www.vent-axia.com</a>
Email:	<a href="mailto:sales@vent-axia.com">sales@vent-axia.com</a>

### Supply & Service

All sales made by Vent-Axia Limited are made only upon the terms of the Company's Conditions of Sale, a copy of which may be obtained on request. As part of the policy of continuous product improvement Vent-Axia reserves the right to alter specifications without notice.



Download our Knowledge Hub app - Your new pocket expert.

Search, View, Share - It's that easy!



Made in Britain