

TOWER TOWER

Product Catalogue
2024/2025



INSTALLATION MATERIALS
PORTABLE POWER | LOW VOLTAGE CABLE

deta^

Introducing Deta Electrical

Deta Electrical is a market leading manufacturer and distributor of wiring, lighting, cable management and electrical installation accessories, with a reputation for unrivalled quality, reliability, service and value for money.

**TOWER
TOWER**

A long established brand, well regarded for its vast range of high quality installation materials, the trusted Tower brand represents an exciting addition to Deta's comprehensive brand portfolio. The Tower offer includes its highly acclaimed range of Installation Materials, including the original Tower Cable Clips, an 18th Edition Fire Rated range, Portable Power and Low Voltage Cable.

Mission & Core Values

Deta's mission is to use its passion and expertise to provide best-in-class products that meet and exceed ever-changing customer needs.

Trusted

A brand trusted by customers, Deta is synonymous with high product quality, extensive product knowledge and exceptional customer service. Robust quality control throughout the development and manufacturing stages are key to delivering quality products.

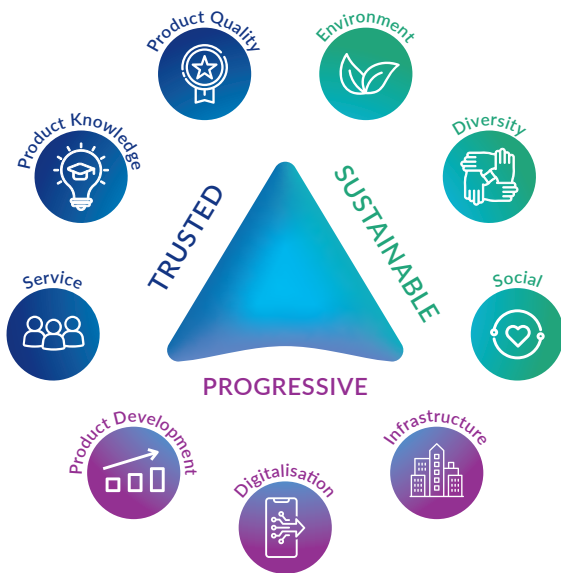
Progressive

Focused on continuous progression, Deta is committed to investment in innovation, product design and ease of installation. Digitalisation is at the heart of Deta's strategy, supporting stakeholder requirements and maximising its value chain.

Sustainable

Deta is committed to protecting the environment for future generations, to building an inclusive community and to ensuring it acts in the best interests of society.

Think electrical, think... deta[▲]



Contents

Introducing Tower	2
Installation Materials	4
18 th Edition Fire Rated	22
Portable Power	28
Low Voltage Cable	40
Index	46

DETA | VIMARK | TTE | TOWER | BRACKENHEATH
BRITICENT | CHANNEL | DETA.E | TIMEGUARD

Continuing the Tower Legacy

Steeped in history and with a pedigree for supplying a vast range of high quality installation materials, the trusted Tower brand represents an exciting addition to Deta's comprehensive brand portfolio, and demonstrates its continued commitment to add value to its wholesale partners.

Gerry Barnett, Managing Director of Deta Electrical, has a longstanding history with Tower dating back to the early 2000s.

“Tower is a long established, highly reputable and well respected brand within the electrical wholesale market. We are excited to re-launch the Tower offer to our customers as the original and the best.”

History

Established in Wales in 1894, Tower began its journey as a nail manufacturer. In the years that followed, the company progressed rapidly to become a market leader in the supply of electrical essentials and cable fixings. With a wealth of knowledge and expertise accumulated over the last 130 years, the Tower name is synonymous with high quality and dependability, and is the brand of choice for the professional electrician.

The return sees the reintroduction of the legacy brand colours, a bold green and striking yellow, a callback to the rich heritage of Tower.



The logo has received a facelift, and the result is a more impactful, modern and fresh take on the original, whilst retaining the main features that have made the brand so recognisable to its customers.

The Tower offer continues to encompass the highly acclaimed range of **Installation Materials**, including the bestselling and original premium range of Tower Cable Clips, Portable Power, and Low Voltage Cable.

Tower Cable Clips: The Original & The Best

Cable clips are indispensable within electrical installations. Employed across residential, commercial, and industrial sectors, these seemingly simple products must withstand rigorous conditions, as well as corrosive environments. This underscores the critical need for cable clips to meet exceptionally high performance standards, which Tower delivers.

Completing the Installation Materials offer are products an electrician carries in their tool bag for every day installations, including the original PVC tape, nylon cable ties, connector boxes and more. Furthermore, the offer includes an 18th Edition Fire Rated range.

The arrival of a new range of Tower Power, including cable reels, extension leads and power accessories, alongside a Low Voltage Cable range further extends the Tower offer.

- ✓ Original Tower Designs
- ✓ Original Tower Tooling
- ✓ Original Tower Manufacturing
- ✓ Original Tower Codes

...Accept No Imitations

Where Quality Matters

Quality is at the heart of everything and remains a core value for Tower; from development, testing and manufacture, to warehousing, logistics and customer service. Continuous investment in innovation and product design, quality assurance and ease of installation remain a key focus in the development of Tower products.

Tower products are manufactured under the most stringent quality control systems in full accordance with the latest requirements, satisfying the demands of the most progressive installations, and reassuring customers that they are specifying products that are built to last.



The background of the entire page is a close-up, high-angle photograph of a large pile of white plastic cable clips. These clips are of a standard U-shaped design, used for organizing and securing cables. They are densely packed together, creating a complex, textured surface. The lighting is bright, casting soft shadows and highlighting the smooth, slightly glossy texture of the plastic.

Installation Materials

Tower offers a comprehensive range of **Installation Materials**, assembled with the professional electrician in mind.

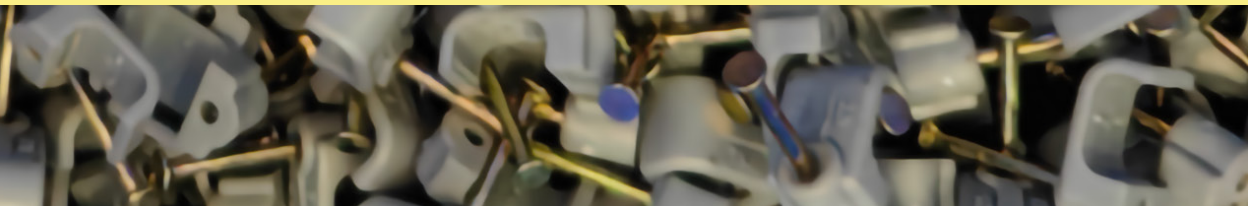
Predominately known for its market leading range of cable clips, the brand has grown to encompass a wide range of best-selling products.

Tower products are synonymous with high-quality and dependability, satisfying the demands of the most progressive installations.



Contents

Cable Clips	6
Tower Tubs	8
Screws & Fixings	8
Cable Ties	10
Self Adhesive Bases	10
Screw Mounted Cradles	10
Connectors	11
Chocbox	12
Glands	14
SWA Cable Cleats	15
Back Boxes	16
Grommets	18
PVC Tape	18
PVC Sleeving	19
Heat Shrink	19
Earthing	20
Fuses	20
Testing Equipment	21



Tower Cable Clips are Back!

The Original and the Best... Accept No Imitations. Tower offers a comprehensive range of premium cable clips to accommodate a wide selection of cable diameters. With hardened steel pins made from high carbon steel, heat treated, then electro zinc-plated, Tower cable clips offer enduring quality.

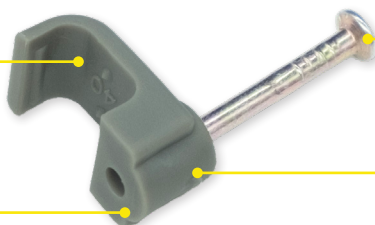
Flat Cable Clips

Internal gripping design safely and securely holds cables in place

Supplied with a premium, zinc-plated hardened steel nail

Manufactured from impact resistant, high-density polyethylene (HDPE) combining strength and elasticity

For use in wood, compressed board and mortar



Twin & Earth – Single

Code	Description	Colour	Pack Qty
70CGKF10	1.0mm T&E Flat Cable Clip	GREY	100
70CGKF15	1.5mm T&E Flat Cable Clip	GREY	100
70CGKF25	2.5mm T&E Flat Cable Clip	GREY	100
70CGKF40	4.0mm T&E Flat Cable Clip	GREY	100
70CGKF60	6.0mm T&E Flat Cable Clip	GREY	100
70CGKF100	10.0mm T&E Flat Cable Clip	GREY	100
70CGKF160	16.0mm T&E Flat Cable Clip	GREY	100

Twin & Earth – Double

Code	Description	Colour	Pack Qty
70CGDKF15	1.5mm T&E Double Flat Cable Clip	GREY	100
70CGDKF25	2.5mm T&E Double Flat Cable Clip	GREY	100

This 'clip with a grip' is ideal for use in computer and communication installations where cables may vary in size

Allows for a flexible but robust design to suit various cable sizes

Manufactured from a specially selected grade of UV stabilised polypropylene which combines strength and elasticity

Plus clips feature a return 'hook' that holds cables tightly and securely



Twin & Earth Plus

Code	Description	Colour	Pack Qty
77CGPF1P	1.0mm/1.5mm Single T&E Cable Clip	GREY	100
77CGPF25P	2.5mm Single T&E Cable Clip	GREY	100
77CGPF4P	4.0mm/6.0mm Single T&E Cable Clip	GREY	100
77CGPF10P	10.0mm Single T&E Cable Clip	GREY	50

Round Cable Clips

This 'clip with a grip' is ideal for use in computer and communication installations where cables may vary in size

Manufactured from a specially selected grade of UV stabilised polypropylene combining strength and elasticity

Allows for a flexible but robust design to suit various cable sizes

Plus clips feature a return 'hook' that holds cables tightly and securely

Round Plus			
Code	Description	Colour	Pack Qty
77CB04P	4-5mm Round Cable Clip	BLACK	200
77CB05P	5-6mm Round Cable Clip	BLACK	100
77CB06P	6-7mm Round Cable Clip	BLACK	100
77CB07P	7-8mm Round Cable Clip	BLACK	100
77CB09P	9-11mm Round Cable Clip	BLACK	100
77CB12P	12-14mm Round Cable Clip	BLACK	100
77CB15P	15-18mm Round Cable Clip	BLACK	100
77CB19P	19-24mm Round Cable Clip	BLACK	50
77CB25P	25-28mm Round Cable Clip	BLACK	50
77CW04P	4-5mm Round Cable Clip	WHITE	200
77CW05P	5-6mm Round Cable Clip	WHITE	100
77CW06P	6-7mm Round Cable Clip	WHITE	100
77CW07P	7-8mm Round Cable Clip	WHITE	100
77CW09P	9-11mm Round Cable Clip	WHITE	100
77CW12P	12-14mm Round Cable Clip	WHITE	100
77CW15P	15-18mm Round Cable Clip	WHITE	100
77CW19P	19-24mm Round Cable Clip	WHITE	50
77CW25P	25-28mm Round Cable Clip	WHITE	50
72CT05P	5-6mm Round Cable Clip	BROWN	100
72CT06P	6-7mm Round Cable Clip	BROWN	100
77CR06P	6-7mm Round Cable Clip	RED	100
77CR07P	7-8mm Round Cable Clip	RED	100
77CR09P	9-11mm Round Cable Clip	RED	100

Tower Tubs

- Resealable lid and handy carry handle offer an efficient way to transport cable clips and fixings
- Wide range of tub options including fixings and cable clips



Tower Tubs		
Code	Description	Pack Qty
05TUB01	400x Brown Plastic Wall Plugs & 400x 10 x 2" Countersunk Screws	800
05TUB02	400x Red Plastic Wall Plugs & 400x 8 x 1.5" Countersunk Screws	1000
05TUB03	200x Cavity Metal Self Drive Plugs & 1.5" Screws	400
05TUB04	400x 1.5mm & 400x 2.5mm T&E Cable Clips	800
05TUB05	400x 1.5mm, 400x 2.5mm T&E Plus Cable Clips & 200 x FR Cable Clips	1000

Screws & Fixings

- Suitable for wood, plastic and nylon wall plugs
- Through hardened and zinc plated finish



Wood Screws - Countersunk, Hardened, Twin Thread, Cross Recess BZP		
Code	Description	Pack Qty
410706	Twin Thread Screw BZP 6 x 0.75"	200
411006	Twin Thread Screw BZP 6 x 1"	200
411206	Twin Thread Screw BZP 6 x 1.25"	200
411506	Twin Thread Screw BZP 6 x 1.5"	200
410708	Twin Thread Screw BZP 8 x 0.75"	200
411008	Twin Thread Screw BZP 8 x 1"	200
411208	Twin Thread Screw BZP 8 x 1.25"	200
411508	Twin Thread Screw BZP 8 x 1.5"	200
411708	Twin Thread Screw BZP 8 x 1.75"	200
412008	Twin Thread Screw BZP 8 x 2"	200
412208	Twin Thread Screw BZP 8 x 2.25"	200
412508	Twin Thread Screw BZP 8 x 2.5"	200
413008	Twin Thread Screw BZP 8 x 3"	200
411010	Twin Thread Screw BZP 10 x 1"	200
411210	Twin Thread Screw BZP 10 x 1.25"	200
411510	Twin Thread Screw BZP 10 x 1.5"	200
411710	Twin Thread Screw BZP 10 x 1.75"	200
412010	Twin Thread Screw BZP 10 x 2"	200
412510	Twin Thread Screw BZP 10 x 2.5"	200
413010	Twin Thread Screw BZP 10 x 3"	200
414010	Twin Thread Screw BZP 10 x 4"	200

- Suitable for socket boxes, switches etc.
- Bright zinc-plated finish



Machine Screws - Raised, Countersunk, Slotted Head BZP

Code	Description	Pack Qty
44S3525	Machine Screw BZP M3.5 x 25mm	100
44S3535	Machine Screw BZP M3.5 x 35mm	100
44S3540	Machine Screw BZP M3.5 x 40mm	100
44S3550	Machine Screw BZP M3.5 x 50mm	100
44S3575	Machine Screw BZP M3.5 x 75mm	100

- Suitable for a variety of electrical installations
- Manufactured from solid brass material



Machine Screws - Brass, Pan Head, Slotted

Code	Description	Pack Qty
44S4006	Machine Screw Brass M4 x 6mm	100
44S4008	Machine Screw Brass M4 x 8mm	100
44S4010	Machine Screw Brass M4 x 10mm	100
44S4012	Machine Screw Brass M4 x 12mm	100
44S4016	Machine Screw Brass M4 x 16mm	100
44S4020	Machine Screw Brass M4 x 20mm	100
44S4025	Machine Screw Brass M4 x 25mm	100
44S4040	Machine Screw Brass M4 x 40mm	100
44S4050	Machine Screw Brass M4 x 50mm	100
44N4	Hexagon Brass Nut M4	100
44W4	Flat Brass Washer M4	100

- Suitable for a variety of electrical installations
- Double slotted head with square nut
- Bright zinc-plated finish



Roofing Nuts & Bolts - Double Slot Head & Nut BZP

Code	Description	Pack Qty
44RNB612	Roofing Nut & Bolt M6 x 12mm	200
44RNB616	Roofing Nut & Bolt M6 x 16mm	200
44RNB620	Roofing Nut & Bolt M6 x 20mm	200
44RNB625	Roofing Nut & Bolt M6 x 25mm	200
44RNB630	Roofing Nut & Bolt M6 x 30mm	200
44RNB640	Roofing Nut & Bolt M6 x 40mm	200
44RNB650	Roofing Nut & Bolt M6 x 50mm	200

- Ideal for fixing PVC or galvanised steel capping
- Supplied with washer that slides along the stem of the head to support installation efficiency
- Available in three lengths

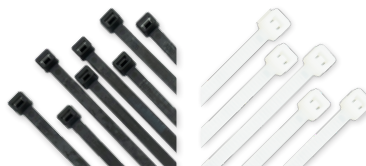


Capping Nails

Code	Description	Pack Qty
12CAP25	Capping Nail 25mm	100
12CAP30	Capping Nail 30mm	100
12CAP35	Capping Nail 35mm	100

Cable Ties

- Self-locking ties for use in a wide range of applications including securing and tidying cables
- Manufactured from Nylon 6.6 and compliant to EN 62275
- Available in both Natural or Black colours
- Carbon black additive to provide enhanced UV resistance (black ties only)
- Flammability of raw material: UL 94 - V2
- Good resistance to bases, oils, greases, oil derivatives, chloride solvents
- Limited resistance to acids
- No resistance to phenols

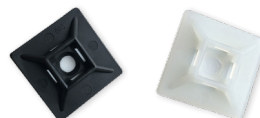


Nylon 6.6 Cable Ties

Code	Description	Colour		Length (mm)	Width (mm)	Tensile Strength (Kg)	Pack Qty
29CT12	2.5x100mm	BLACK	NATURAL	2.5	100	8.1	100
29CT22	3.6x150mm	BLACK	NATURAL	3.6	150	18.2	100
29CT24	3.6x200mm	BLACK	NATURAL	3.6	200	18.2	100
29CT32	4.8x200mm	BLACK	NATURAL	4.8	200	22.2	100
29CT34	4.8x300mm	BLACK	NATURAL	4.8	300	22.2	100
29CT36	4.8x370mm	BLACK	NATURAL	4.8	370	22.2	100
29CT44	7.6x300mm	BLACK	NATURAL	7.6	300	54.4	100
29CT46	7.6x380mm	BLACK	NATURAL	7.6	380	54.4	100
29CT56	8.8x780mm	BLACK	NATURAL	8.8	780	79.4	100

Self Adhesive Bases

- Quick and simple way to secure lighter bundles of cable and wires
- Complete with a high performance 3M self adhesive base
- Screw mounting hole provided for securing heavier bundles
- Manufactured from Nylon 6.6



Self Adhesive Bases

Code	Description	Colour		Length (mm)	Width (mm)	Pack Qty
29CT71	19x19mm	BLACK	NATURAL	19	19	100
29CT73	28x28mm	BLACK	NATURAL	28	28	100

Screw Mounted Cradles

- For securing heavier bundles of cable and wires
- Manufactured from Nylon 6.6



Screw Mounted Cradles

Code	Description	Colour		Length (mm)	Width (mm)	Pack Qty
29CT75	22x16mm	BLACK	NATURAL	22	16	100

Note

Bases must be installed correctly on a suitable contact surface that has been properly cleaned, otherwise load levels may be reduced. Please see website for load level details. Cable ties & accessories are available in black or natural colours. Please add suffix BK or NU to catalogue code e.g. 29CT12BK.

PP Connector Strips

- Manufactured from flame-retardant polypropylene with steel inserts
- The tough yet flexible polypropylene construction allows installers to snap off the desired amount of connector strips, removing the need for time consuming cutting
- Supplied with captive, backed out terminal screws to improve installation efficiency
- Compliant with BS EN 60998-1



PP Connector Strips			
Code	Description	Colour	Pack Qty
23SC03	3A 12 Way Connector Strip	WHITE	10
23SC05	5A 12 Way Connector Strip	WHITE	10
23SC15	15A 12 Way Connector Strip	WHITE	10
23SC30	30A 12 Way Connector Strip	WHITE	10
23SC60	60A 12 Way Connector Strip	WHITE	5

Releasable Lever Connectors

- For maintenance-free, re-usable terminations
- For use with solid and stranded conductors from 0.2mm² to 4.0mm²
- Transparent shell to support clear and visible termination
- Flame retardant VO polycarbonate shell



Releasable Lever Connectors			
Code	Description	Colour	Pack Qty
23LC322	2 Port 32A Releasable Lever Connector	CLEAR	50
23LC323	3 Port 32A Releasable Lever Connector	CLEAR	50
23LC325	5 Port 32A Releasable Lever Connector	CLEAR	30

Push-In Connectors

- Ultra-compact, fast fixing, maintenance-free terminations
- Conductor size from 0.5mm² to 2.5mm²
- Transparent shell supports clear and visible termination
- Flame-retardant VO polycarbonate shell
- Colour-coded with rear testing slot



Push-In Connectors			
Code	Description	Colour	Pack Qty
23PC242	2 Port 24A Push-In Connector	RED-TRANSPARENT	100
23PC243	3 Port 24A Push-In Connector	ORANGE-TRANSPARENT	100
23PC244	4 Port 24A Push-In Connector	YELLOW-TRANSPARENT	100
23PC245	5 Port 24A Push-In Connector	BLACK-TRANSPARENT	50
23PC246	6 Port 24A Push-In Connector	PURPLE-TRANSPARENT	50

The Chocbox Evolution

This versatile product serves as a multi-application solution, functioning as a connector cover, junction box, or data telecom box depending on your requirements. Designed to protect and insulate electrical connections, it accommodates connector sizes ranging from 3A to 30A. Manufactured from flame-retardant material in compliance with BS EN 60695-2-11:2014, it can be easily fitted around a terminal block.

An addition to the original and highly successful Chocbox (23CB1), the Chocbox 2 is an extension to the range, now offering brand-new features. Equipped with 50% more wiring space than the original design, the Chocbox 2 continues to protect and insulate electrical connections, now with a broader range of potential applications than ever before.

Swift Installation

Effortless to install, the Chocbox 2 provides fast hassle-free installation by incorporating an innovative screwless design and features such as push fit cable grips and a self-locking lid.

Cable grips can be used to secure cables with a simple press and provide strain relief to terminals. Once wiring is complete, close the push fit hinged lid to restrict access to live parts, ensuring safety at all times.

Flexible Application

A versatile wiring solution, the Chocbox 2 is ideal for use as either a connector cover, junction box or data telecom box.

Supplied with an 11-way mounting tray for 221 connector (suitable for 32A 2, 3 or 5-way versions), the Chocbox 2 is well suited to handle a variety of applications, such as for use as a lighting connector.

A true multi-purpose electrical installation accessory, the product accommodates a range of sizes from 3A to 30A connector strips, lever connectors and push in connectors.

Chocbox

- The original, safe and simple solution to protect and insulate cables, as seen on BBC's Dragon's Den
- Ideal for use as a connector cover, junction box or data telecom box
- Accommodates a range of connector sizes from 3A to 30A
- Manufactured from flame-retardant material to BS EN 60695-2-11:2014
- Can be fitted around a terminal block after termination
- Fixing holes suitable for surface mounting

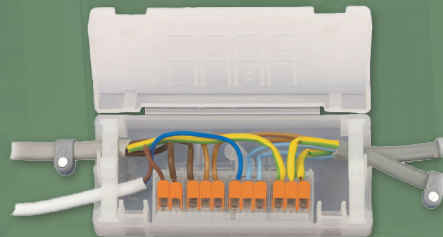
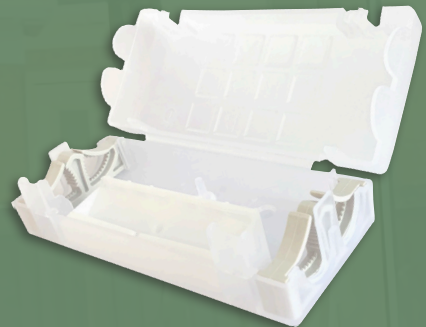


Chocbox

Code	Description
23CB1	Chocbox Connector Box

Chocbox 2

- Screwless design to improve installation efficiency
- Supplied with LIA approved push fit cord grips to secure cables in place
- Hinged lid with dual clips restrict access to live parts which can only be accessed with use of a screwdriver
- Accommodates a range of connector sizes from 3A to 30A
- More than 50% increase in wiring space compared to the original Chocbox
- Manufactured from flame-retardant polypropylene material to BS EN 60695-2-11:2014
- Supplied with mounting tray for 221 lever connectors



Chocbox 2

Code	Description
23CB2	Chocbox 2 Screwless Connector Box

SWA Brass Cable Glands

- Brass Cable Glands with Earth Tags, Locknuts and Shrouds
- Suitable for all types of steel wire armoured cable
- BW Indoor and CW In/Outdoor Glands available with PVC or LSF Shroud



BW Indoor Shroud

Code	Description	Material	Gland Size (mm)	Max Cable Dia. (mm)	Max Cable Dia. (mm)	Pack Qty
62BW20SP	20mm Short	PVC	20	11.8	15.8	2
62BW20P	20mm	PVC	20	13.8	19.5	2
62BW25P	25mm	PVC	25	19.8	27	2
62BW32P	32mm	PVC	32	26.4	33.5	2
62BW40P	40mm	PVC	40	32.4	40.1	1
62BW50P	50mm	PVC	50	44	52.6	1
62BW60P	63mm	PVC	63	56.2	65.5	1
62BW75P	75mm	PVC	75	68	82.9	1
62BW90P	90mm	PVC	90	77	90	1
62BW20SL	20mm Short	LSF	20	11.8	15.8	2
62BW20L	20mm	LSF	20	13.8	19.5	2
62BW25L	25mm	LSF	25	19.8	27	2
62BW32L	32mm	LSF	32	26.4	33.5	2
62BW40L	40mm	LSF	40	32.4	40.1	1
62BW50L	50mm	LSF	50	44	52.6	1
62BW63L	63mm	LSF	63	56.2	65.5	1
62BW75L	75mm	LSF	75	68	82.9	1
62BW90L	90mm	LSF	90	77	90	1

CW Indoor/Outdoor Shroud

Code	Description	Material	Gland Size (mm)	Max Cable Dia. (mm)	Max Cable Dia. (mm)	Pack Qty
62CW20SP	20mm Short	PVC	20	12.5	17	2
62CW20P	20mm	PVC	20	14.4	20.5	2
62CW25P	25mm	PVC	25	20.4	27	2
62CW32P	32mm	PVC	32	26.5	33	2
62CW40P	40mm	PVC	40	32.5	40.8	1
62CW50P	50mm	PVC	50	44	53.5	1
62CW63P	63mm	PVC	63	56.5	65.5	1
62CW20SL	20mm Short	LSF	20	12.5	17	2
62CW20L	20mm	LSF	20	14.4	20.5	2
62CW25L	25mm	LSF	25	20.4	27	2
62CW32L	32mm	LSF	32	26.5	33	2
62CW40L	40mm	LSF	40	32.5	40.8	1
62CW50L	50mm	LSF	50	44	53.5	1
62CW63L	63mm	LSF	63	56.5	65.5	1
62CW75L	75mm	LSF	75	68	82.9	1
62CW90L	90mm	LSF	90	77	90	1
62CW75P	75mm	LSF	75	68	82.9	1
62CW90P	90mm	LSF	90	77	90	1

Nylon Cable Glands

- Provides cable strain relief and protection, providing a tight seal when installing cable into a pre-drilled hole
- IP68 rated, providing cable protection in harsh environments
- Manufactured in nylon with a flammability rating of UL 94 - V2
- Supplied in handy contractor packs with locknuts and entry thread seal



Dome Top Compression Glands

Code	Description	Colour	Cable Size	Pack Qty
62CG20SB	20mm Small	BLACK	6-12mm	10
62CG20SG	20mm Small	GREY	6-12mm	10
62CG20SR	20mm Small	RED	6-12mm	10
62CG20SW	20mm Small	WHITE	6-12mm	10
62CG20LB	20mm	BLACK	10-14mm	10
62CG20LG	20mm	GREY	10-14mm	10
62CG20LR	20mm	RED	10-14mm	10
62CG20LW	20mm	WHITE	10-14mm	10
62CG25B	25mm	BLACK	13-18mm	10
62CG25G	25mm	GREY	13-18mm	10
62CG25W	25mm	WHITE	13-18mm	10

SWA Cable Cleats

- Heavy duty cable cleats, ideal for fixing, clamping and supporting armoured and unarmoured cables
- One part single fixing cleat
- Excellent weathering performance and high resistance to ultraviolet light
- Strong and impact resistant



SWA Cable Cleats

Code	Description	Colour	Pack Qty
63SWA05	10.1mm-12.7mm #5	BLACK	100
63SWA06	12.6mm-15.2mm #6	BLACK	100
63SWA07	15.1mm-17.8mm #7	BLACK	100
63SWA08	17.7mm-20.3mm #8	BLACK	100
63SWA09	20.2mm-22.8mm #9	BLACK	100
63SWA10	22.7mm-25.4mm #10	BLACK	100
63SWA11	25.3mm-27.7mm #11	BLACK	50
63SWA12	27.6mm-30.5mm #12	BLACK	50
63SWA14	30.4mm-35.5mm #14	BLACK	50
63SWA16	35.4mm-40.6mm #16	BLACK	50
63SWA18	40.5mm-45.7mm #18	BLACK	50
63SWA20	45.6mm-50.8mm #20	BLACK	50

Dry Lining Boxes

- Flush mounting
- Suitable for plaster board thickness of 4-20mm
- DB2547 & DB2548 recommended for Vimark Ultra Flatplate and Ultra Screwless
- In compliance with BS 4662



DB2540



DB2541



DB2543



DB2544



DB2545



DB2546



DB2547†



DB2548†

Dry Lining Boxes

Code	Description	Cut Out (mm)	20mm Knockouts
DB2540	1 gang 35mm deep	75x75	1
DB2541	2 gang 35mm deep	135x75	1
DB2542	1 gang 46mm deep	75x75	1
DB2543	2 gang 46mm deep	135x75	1
DB2544	Round 34mm deep, 62mm diameter	63 dia.	2
DB2545	1+1 gang 35mm deep	161x75	2
DB2546	2+1 gang 35mm deep	221x75	2

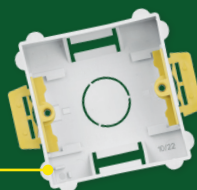
Dry Lining Boxes - Flush Fitting

Code	Description	Cut Out (mm)	20mm Knockouts
DB2547†	1 gang 35mm deep	75x75	1
DB2548†	2 gang 35mm deep	135x75	1

†Unique Product Feature

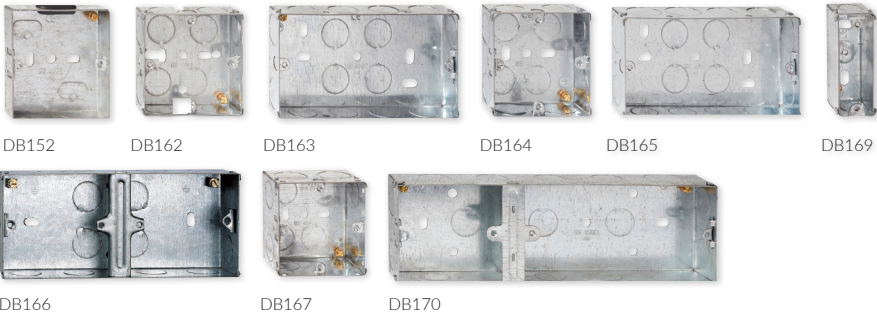
Allows flush fitting of Vimark Wiring Accessories

Unique lipless design



Metal Boxes

- Flush mounting
- Adjustable lug
- DB169 has 16mm knockouts
- 25mm deep boxes have 20mm knockouts
- 35mm and 47mm deep boxes have 20mm and 25mm knockouts
- In compliance with BS 4662



Metal Boxes					
Code	Description	16mm Knockouts	20mm Knockouts	25mm Knockouts	Dimensions (mm)
DB152	1 gang 16mm deep	5 (Oval)	-	-	70x72x16
DB162	1 gang 25mm deep	-	12	-	70x72x26
DB163	2 gang 25mm deep	-	16	-	70x132x26
DB164	1 gang 35mm deep	-	9	3	72x72x35
DB165	2 gang 35mm deep	-	10	6	72x132x35
DB166	1+1 gang 35mm deep	-	16	-	72x159x35
DB167	1 gang 47mm deep	-	10	2	72x72x48
DB168	2 gang 47mm deep	-	10	6	72x130x48
DB169	1 gang 27mm architrave fixed lugs	2	-	-	29x72x28
DB170	2+1 gang 35mm deep		15	2	70x215x35

Grommets

- PVC grommets for general installation use
- Protects cable from rough and sharp edges
- Push fit design allows for quick installation
- Available in open or closed, standard or quick fit
- Operating temperature: -35°C to +70°C



Grommets			
Code	Description	Colour	Pack Qty
66GR20P	20mm Open	BLACK	100
66GR25P	25mm Open	BLACK	50
66GR32P	32mm Open	BLACK	25
66GR20C	20mm Closed	BLACK	100
66GR25C	25mm Closed	BLACK	50
66GR32C	32mm Closed	BLACK	25
66GR20PQ	20mm Open Quick Fit	BLACK	100
66GR25PQ	25mm Open Quick Fit	BLACK	50
66GR32PQ	32mm Open Quick Fit	BLACK	25
66GR20CQ	20mm Closed Quick Fit	BLACK	100
66GR25CQ	25mm Closed Quick Fit	BLACK	50
66GR32CQ	32mm Closed Quick Fit	BLACK	25

PVC Tape

- Manufactured from flame-retardant self-extinguishing PVC to BS EN 60454
- Suitable for electrical insulation, binding, colour coding and identification
- Available in a range of sizes and colours



PVC Tape					
Code	Description	Colour	Length (m)	Width (mm)	Thickness (mm)
22TAPE01	20m x 19mm PVC Insulation Tape	BLACK	20	19	0.13
22TAPE02	20m x 19mm PVC Insulation Tape	RED	20	19	0.13
22TAPE03	20m x 19mm PVC Insulation Tape	BLUE	20	19	0.13
22TAPE04	20m x 19mm PVC Insulation Tape	GREEN/YELLOW	20	19	0.13
22TAPE05	20m x 19mm PVC Insulation Tape	WHITE	20	19	0.13
22TAPE06	20m x 19mm PVC Insulation Tape	YELLOW	20	19	0.13
22TAPE07	20m x 19mm PVC Insulation Tape	BROWN	20	19	0.13
22TAPE08	20m x 19mm PVC Insulation Tape	GREY	20	19	0.13
22TAPE09	20m x 19mm PVC Insulation Tape	GREEN	20	19	0.13
22TAPE21	33m x 19mm PVC Insulation Tape	BLACK	33	19	0.13
22TAPE22	33m x 19mm PVC Insulation Tape	RED	33	19	0.13
22TAPE23	33m x 19mm PVC Insulation Tape	BLUE	33	19	0.13
22TAPE24	33m x 19mm PVC Insulation Tape	GREEN/YELLOW	33	19	0.13
22TAPE25	33m x 19mm PVC Insulation Tape	WHITE	33	19	0.13
22TAPE26	33m x 19mm PVC Insulation Tape	YELLOW	33	19	0.13
22TAPE27	33m x 19mm PVC Insulation Tape	BROWN	33	19	0.13
22TAPE28	33m x 19mm PVC Insulation Tape	GREY	33	19	0.13
22TAPE29	33m x 19mm PVC Insulation Tape	GREEN	33	19	0.13

PVC Sleeving

- Range of sleeving for Earth, Live and Neutral wires
- High-grade PVC construction
- Self-extinguishing in 30 seconds
- Manufactured to BS EN 60684
- Available for a range of cable diameters



PVC Earth Sleeving		
Code	Description	Colour
27GY2	2mm x 100m	GREEN/YELLOW
27GY3	3mm x 100m	GREEN/YELLOW
27GY4	4mm x 100m	GREEN/YELLOW
27GY5	5mm x 100m	GREEN/YELLOW
27GY6	6mm x 100m	GREEN/YELLOW

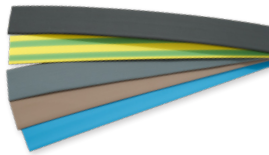
PVC Earth Sleeving – Reels		
Code	Description	Colour
27GY3R	3mm x 100m	GREEN/YELLOW
27GY4R	4mm x 100m	GREEN/YELLOW

PVC Sleeving		
Code	Description	Colour
27BU3	3mm x 100m	BLUE
27BU4	4mm x 100m	BLUE
27BR3	3mm x 100m	BROWN
27BR4	4mm x 100m	BROWN

Multi Reel				
Code	Description	Colours		
27MR3R	3mm x 100m	GREEN/YELLOW	BLUE	BROWN

Heat Shrink

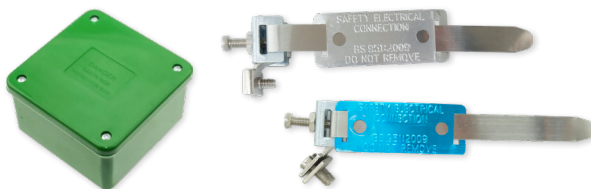
- Used to repair insulation on wires or bundle together, protect wires and create cable entry seals
- Multipack contains 3x 250mm of each colour: Black, Blue, Brown, Grey, Green/Yellow
- 2:1 Shrink Ratio



Heat Shrink							
Code	Description	Colours					Pack Qty
29HSM02	6.4mm x 250mm	BLACK	BLUE	BROWN	GREY	GREEN/YELLOW	15
29HSM03	9.5mm x 250mm	BLACK	BLUE	BROWN	GREY	GREEN/YELLOW	15
29HSM04	12.7mm x 250mm	BLACK	BLUE	BROWN	GREY	GREEN/YELLOW	15
29HSM05	19.1mm x 250mm	BLACK	BLUE	BROWN	GREY	GREEN/YELLOW	15
29HSM06	25.4mm x 250mm	BLACK	BLUE	BROWN	GREY	GREEN/YELLOW	15

Earthing

- High performance earth clamps and box
- For use dry and wet conditions



Earthing Box

Code	Description	Colour
1220	Earthing Box	GREEN

Earth Clamps

Code	Description
21EC4	EC14 150mm Dry Conditions
21EC4/2	EC14/2 200mm Dry Conditions
21EC5	EC15 150mm Wet or Dry Conditions
21EC5/2	EC15/2 200mm Wet or Dry Conditions
21EC5/3	EC15/3 300mm Wet or Dry Conditions
21EC6	EC16 150mm Wet Conditions

Fuses

- Robust protection against overloads and short circuits in household and commercial electrical systems
- Suitable for a wide range of applications, including powering appliances, lighting circuits, and socket outlets



Fuse Wire

Code	Description
32FUW	Fuse Wire

Fuses

Code	Description	Pack Qty
32F3A	3A Fuse	10
32F5A	5A Fuse	10
32F10A	10A Fuse	10
32F13A	13A Fuse	10
32FMP	Mixed Fuses Pack (2x3A, 3x5A, 5x 13A)	10

Testing Equipment

Suitable for testing and inspection of power socket outlets in residential and commercial buildings

LEDs indicate the detected voltage range

CAT III 600V



LED indication to confirm correct wiring

RCD testing function to test 30mA rated RCD

33TM01

Detects AC voltage without making electrical contact

High and low voltage sensitivity range selection

CAT III 1000V

Powered by 2x 1.5V AAA batteries (included)



Audible and LED indication

Integrated white LED flashlight, auto power-off

IP54 rating for sufficient protection from dust and splashes of any direction

33TM02

High performance, full featured digital multimeter suitable for wide range of AC/DC electrical measurements

IEC 61010-1, CAT III 600V

Powered by 2x 1.5V AAA batteries (included)



4-digit (999 count) LCD screen, true RMS

Low battery indication & integral LED flashlight

Overload protection

33TM03

Testing Equipment	
Code	Description
33TM01	BS Socket Tester
33TM02	Non-Contact AC Voltage Detector
33TM03	Digital Multimeter Cat III 600V
RPEWT50	Earth Wire Test Cable Reel 50m



TOWER^{18th} Edition TOWER

As stipulated within Chapter 52 of BS7671 IET Wiring Regulations 18th Edition, 521.10.202 requires cables to be adequately supported against their premature collapse in the event of a fire. This applies throughout the installation and not just in escape routes.

Tower's newly established **18th Edition Fire Rated** range has been created with safety in mind, protecting cables from premature collapse in the event of a fire, and providing reliable, long-lasting protection.



Contents

Fire Rated Cable Clips	24
Stainless Steel Roller Ball Cable Ties	24
LSF Clips and Saddles	25
All Round Banding	26
Fire Rated Spacer Bar Saddles	26



Fire Rated Cable Clips

- Designed to secure cables in a high temperature environment
- Manufactured from mild steel with carbon steel nails and bright zinc-plated finish
- Supplied with a premium zinc-plated hardened steel nail
- Enables installations to comply with the 18th Edition Wiring Regulations



Fire Rated Cable Clips

Code	Description	Pack Qty
70FR15	1.5mm Fire Rated T&E Clip	100
70FR25	2.5mm Fire Rated T&E Clip	100
70FR40	4.0mm Fire Rated T&E Clip	100
70FR60	6.0mm Fire Rated T&E Clip	100

Stainless Steel Roller Ball Cable Ties

- Fire rated cable tie for securing and tidying cables
- Manufactured from 316 Stainless Steel for the most corrosive environments
- Enables installations to comply with the 18th Edition Wiring Regulations
- Operation temperature of -80°C to + 538°C
- Self-locking head design speeds installation and locks into place at any length along tie body



316 Stainless Steel Roller Ball Cable Ties

Code	Description	Length (mm)	Width (mm)	Tensile Strength (Kg)	Pack Qty
29CT80SS	4.6x150mm	150	4.6	90.8	100
29CT81SS	4.6x200mm	200	4.6	90.8	100
29CT83SS	4.6x300mm	300	4.6	90.8	100
29CT84SS	4.6x360mm	360	4.6	90.8	100
29CT85SS	4.6x520mm	520	4.6	90.8	100
29CT88SS	7.9x300mm	300	7.9	163	100
29CT89SS	7.9x360mm	360	7.9	163	100
29CT90SS	7.9x520mm	520	7.9	163	100
29CT92SS	7.9x840mm	840	7.9	163	100

Stainless Steel Mounts

Code	Description	Pack Qty
29CTM4SS	Stainless Steel Cable Tie Mount M4	100
29CTM6SS	Stainless Steel Cable Tie Mount M6	100

LSF Clips & Saddles

- Suitable for securely fixing two fire rated cables
- Low smoke zero halogen
- Corrosion and impact resistant
- Enables installations to comply with the 18th Edition Wiring Regulations
- Fire propagation – Class 0
- Smoke emission – Class 1
- Available in black, red or white



LSF Clips

Code	Description	Colour			Pack Qty
64LSF28	7.0-7.4mm 28	BLACK	RED	WHITE	50
64LSF30	7.5-7.9mm 30	BLACK	RED	WHITE	50
64LSF32	8.0-8.4mm 32	BLACK	RED	WHITE	50
64LSF34	8.5-9.2mm 34	BLACK	RED	WHITE	50
64LSF37	9.3-10.0mm 37	BLACK	RED	WHITE	50
64LSF40	10.1-10.7mm 40	BLACK	RED	WHITE	50
64LSF43	10.8-11.7mm 43	BLACK	RED	WHITE	50

LSF Saddles

Code	Description	Colour			Pack Qty
64LSF302	7.0-7.7mm 302	BLACK	RED	WHITE	50
64LSF342	7.8-9.0mm 342	BLACK	RED	WHITE	50
64LSF382	9.1-10.0mm 382	BLACK	RED	WHITE	50

Note

LSF Clips & Saddles are available in black, red or white. Please add suffix BK, RD or WH to catalogue code e.g. 64LSF28BK

Cable Type	LSF Clips		LSF Saddles	
	MICC	FP200	MICC	FP200
2 core 1mm ²	-	64LSF32	-	64LSF382
3 core 1mm ²	64LSF28	64LSF32	64LSF382	64LSF382
4 core 1mm ²	64LSF30	64LSF32	-	-
2 core 1.5mm ²	64LSF28	64LSF32	64LSF382	64LSF382
3 core 1.5mm ²	64LSF30	64LSF32	-	-
4 core 1.5mm ²	64LSF34	64LSF37	-	-
2 core 2.5mm ²	64LSF32	64LSF37	-	-
3 core 2.5mm ²	64LSF34	64LSF40	-	-
4 core 2.5mm ²	64LSF37	64LSF43	-	-
2 core 4.0mm ²	64LSF37	64LSF43	-	-

This chart is intended as a guide only. Please check the actual cable dimensions against the clip dimensions to ensure the correct selection.

All Round Banding

- For securing, supporting and strapping cable, trunking and ducting
- Easy to cut and bend
- Available in a range of finishes



12mm All Round Banding

Code	Description	Colour	Width (mm)	Length (m)	Dia. (mm)
31ARB12G	12mm All Round Banding	GALV	12	10	5
31ARB12B	12mm All Round Banding	BLACK	12	10	5
31ARB12R	12mm All Round Banding	RED	12	10	5
31ARB12W	12mm All Round Banding	WHITE	12	10	5

17mm All Round Banding

Code	Description	Colour	Width (mm)	Length (m)	Dia. (mm)
31ARB17G	17mm All Round Banding	GALV	17	10	7
31ARB17B	17mm All Round Banding	BLACK	17	10	7

Fire Rated Spacer Bar Saddles

- Manufactured from powder coated steel
- Offers a strong and stable grip on conduit
- Equipped with two screw holes for convenient surface mounting



Steel Powder Coated Spacer Bar Saddles

Code	Description	Colour
64SBS20B	20mm	BLACK
64SBS20W	20mm	WHITE
64SBS25B	25mm	BLACK
64SBS25W	25mm	WHITE





TOWER POWER

The **Tower Power** range offers solutions for everyday power requirements, from cable reels and extension leads to garden solutions and portable power accessories.

A selection of indoor and outdoor cable reels offers flexible power solutions for a range of environments, blending durability with innovative safety features to maximise usage.

A wide range of Extension Leads and USB Chargers, including surge protection and power delivery options, provide enhanced protection and faster charging speeds.



Contents

Reel ¹⁰ Cable Reels	30
Reel ¹³ Cable Reels	30
Reel ^{PRO} Cable Reels	31
Garden ⁺ Cable Reels	32
Extension Leads	34
USB Extension Leads	35
USB Chargers & Adaptors	36
RCD Plugs & Adaptors	38
Heavy Duty Accessories	38
Plug Tops	39
Adaptor Plugs	39

REEL¹⁰ Cable Reels



- Portable power for indoor use
- Thermal cutout prevents overheating if reel is overloaded
- 2400w maximum load unwound
- 10A rated with 1.00mm² cable size
- 4, 8, 12, and 20 metre options available
- In compliance with BS EN 61242, BS EN 1363-2



REEL¹⁰ Cable Reels

Code	Description	Cable Size	Max. Wound Rating	Max. Unwound Rating	Thermal Cutout
TP10412	2 Socket Cassette Reel 4 Metre	4m x 1.00mm ²	3A/720W	10A/2400W	Yes
TP10812	2 Socket Cassette Reel 8 Metre	8m x 1.00mm ²	3A/720W	10A/2400W	Yes
TP11222	2 Socket Case Reel 12 Metre	12m x 1.00mm ²	3A/720W	10A/2400W	Yes
TP12032	2 Socket Drum Reel 20 Metre	20m x 1.00mm ²	3A/720W	10A/2400W	Yes

REEL¹³ Cable Reels



- Portable power for everyday use and demanding requirements
- Thermal cutout prevents overheating if reel is overloaded
- 3120w maximum load unwound
- 13A rated with 1.25mm² cable size
- 4, 10, 15, 20, 25, and 50 metre options available
- In compliance with BS EN 61242, BS EN 1363-2



REEL¹³ Cable Reels

Code	Description	Cable Size	Max. Wound Rating	Max. Unwound Rating	Thermal Cutout
TP20514	4 Socket Cassette Reel 5 Metre	5m x 1.25mm ²	4A/960W	13A/3120W	Yes
TP21014	4 Socket Cassette Reel 10 Metre	10m x 1.25mm ²	4A/960W	13A/3120W	Yes
TP21524	4 Socket Case Reel 15 Metre	15m x 1.25mm ²	5A/1200W	13A/3120W	Yes
TP22024	4 Socket Case Reel 20 Metre	20m x 1.25mm ²	5A/1200W	13A/3120W	Yes
TP22534	4 Socket Drum Reel 25 Metre	25m x 1.25mm ²	5A/1200W	13A/3120W	Yes
TP25034	4 Socket Drum Reel 50 Metre	50m x 1.25mm ²	5A/1200W	13A/3120W	Yes

REEL^{PRO} Cable Reels



This premium cable reel is designed for enhanced usability, featuring a high-visibility cable and patented dual drum technology for smooth, friction-free winding*.

*Limited to TP40514, TP41014 and TP41524 only

- In compliance with BS EN 61242, BS EN 1363-2



REEL^{PRO} Cable Reels

Code	Description	Cable Size	Max. Wound Rating	Max. Unwound Rating	Thermal Cutout
TP40514	4 Socket Cassette Reel 5 Metre	5m x 1.25mm ²	5A/1200W	13A/3120W	Yes
TP41014	4 Socket Cassette Reel 10 Metre	10m x 1.25mm ²	4A/960W	13A/3120W	Yes
TP41524	4 Socket Case Reel 15 Metre	15m x 1.25mm ²	4A/960W	13A/3120W	Yes
TP42594	4 Socket Tri Pro Reel 25 Metre	25m x 1.25mm ²	5A/1200W	13A/3120W	Yes
TP42534	4 Socket Drum Reel 25 Metre	25m x 1.25mm ²	5A/1200W	13A/3120W	Yes
TP45034	4 Socket Drum Reel 50 Metre	50m x 1.25mm ²	5A/1200W	13A/3120W	Yes

Garden+

Perfect for outdoor use, Garden+ features a high-visibility orange cable, IP54 rating, and various socket options. It includes garden-specific items like, H-frame leads, spike sockets and a cable tidy for all needs garden!

IP54 Explained



Ingress Protection (IP) is an indication of how well the product is protected.



Solid

Rating from least to most protected (0 to 6)

0 1 2 3 4 5 6

Dust Protection

Water

Rating from least to most protected (0 to 8)

0 1 2 3 4 5 6 7 8

Splash Protection

Garden+ Cable Reels



- High visibility casing and cable, with easy cable wind
- Thermal cutout prevents overheating if reels are overloaded
- Integrated handle and base for convenient portability
- TP32062 has IP54 protected twin sockets
- In compliance with BS EN 61242, BS EN 1363-2



Cable Reels

Code	Description	Cable Size	Max. Wound Rating	Max. Unwound Rating	Thermal Cutout
TP31014	4 Socket Cassette Reel 10 Metre	10m x 1.25mm ²	4A/960W	13A/3120W	Yes
TP32024	4 Socket Case Reel 20 Metre	20m x 1.25mm ²	5A/1200W	13A/3120W	Yes
TP32062	2 Socket IP54 Case Reel 20 Metre	20m x 1.25mm ²	4A/960W	13A/3120W	Yes

Garden+ Extension Leads



- High visibility cable
- TP31571 has a durable rubber sockets
- TP31581 and TP31592 have IP54 protected sockets
- TP31592 has a tapered spike for easy insertion into grass or soil



H Frame & Spike Extension Leads

Code	Description	Cable Size	Max. Wound Rating	Max. Unwound Rating	Thermal Cutout
TP31571	1 Socket H Frame Lead 15 Metre	15m x 1.25mm ²	5A/1200W	13A/3120W	No
TP31581	1 Socket IP54 H Frame Lead 15 Metre	15m x 1.25mm ²	5A/1200W	13A/3120W	No
TP31592	2 Socket IP54 Spike Lead 20 Metre	15m x 1.25mm ²	5A/1200W	13A/3120W	No

Garden+ Cable Reel Accessory

- Plug slots to hold plugs securely



Accessory

Code	Description
TP3901	H Frame Cable Tidy

Extension Leads



- Switched & unswitched lead
- 3120w maximum load
- 13A rated
- 4 and 6 socket leads includes keyhole slots for wall mounting
- In compliance with BS 1363-2



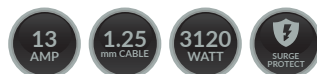
Unswitched Leads

Code	Description	Cable	Rating	Finish
TP5012	1 Socket Lead 2 Metre	2m x 1.25mm ²	13A/3120W	WHITE
TP5015	1 Socket Lead 5 Metre	5m x 1.25mm ²	13A/3120W	WHITE
TP5022	2 Socket Lead 2 Metre	2m x 1.25mm ²	13A/3120W	WHITE
TP5025N	2 Socket Lead 5 Metre with Neon	5m x 1.25mm ²	13A/3120W	WHITE
TP50408	4 Socket Lead 0.75 Metre	0.75m x 1.25mm ²	13A/3120W	WHITE
TP5042	4 Socket Lead 2 Metre	2m x 1.25mm ²	13A/3120W	WHITE
TP5042N	4 Socket Lead 2 Metre with Neon	2m x 1.25mm ²	13A/3120W	WHITE
TP5045	4 Socket Lead 5 Metre	5m x 1.25mm ²	13A/3120W	WHITE
TP5062	6 Socket Lead 2 Metre	2m x 1.25mm ²	13A/3120W	WHITE
TP5065	6 Socket Lead 5 Metre	5m x 1.25mm ²	13A/3120W	WHITE

Switched Leads

Code	Description	Cable	Rating	Finish
TP5142	4 Switched Socket Lead 2 Metre	2m x 1.25mm ²	13A/3120W	WHITE
TP5162	6 Switched Socket Lead 2 Metre	2m x 1.25mm ²	13A/3120W	WHITE

Extension Leads with Surge



- 3120w maximum load
- 13A rated
- 4 and 6 socket leads include keyhole slots for wall mounting
- In compliance with BS 1363-2



Unswitched Leads with Surge

Code	Description	Cable	Rating	Finish
TP5342	4 Socket Lead 2 Metre Surge	2m x 1.25mm ²	13A/3120W	WHITE
TP5362	6 Socket Lead 2 Metre Surge	2m x 1.25mm ²	13A/3120W	WHITE
TP53102TN	10 Socket Tower 2 Metre Surge with Neon	2m x 1.25mm ²	13A/3120W	WHITE

Switched Leads with Surge

Code	Description	Cable	Rating	Finish
TP54408	4 Switched Socket Lead 0.75 Metre Surge	0.75m x 1.25mm ²	13A/3120W	WHITE
TP5442B	4 Switched Socket Lead 2 Metre Surge	2m x 1.25mm ²	13A/3120W	BLACK
TP5445B	4 Switched Socket Lead 5 Metre Surge	5m x 1.25mm ²	13A/3120W	BLACK

Banded Travel UBS Extension Leads

13 AMP

1.25 mm CABLE

3120 WATT

2-YEAR WARRANTY

- 13A rated
- USB-A and USB-C charging outlets for maximum flexibility
- Fast Charger with Power Delivery and Quick Charge protocols
- Banded lead option for easy storage
- In compliance with BS 1363-3



Travel Extension Leads with USB Charging				
Code	Description	Cable	Rating	Finish
TP552230WH	2 Socket Banded Lead 1.4 Metre 20 Watt A+C USB PD	1.4m x 1.25mm ²	13A/3120W	WHITE
TP552230BK	2 Socket Banded Lead 1.4 Metre 20 Watt A+C USB PD	1.4m x 1.25mm ²	13A/3120W	BLACK

Desk Mounted USB Extension Leads

13 AMP

1.25 mm CABLE

3120 WATT

2-YEAR WARRANTY

- 13A rated
- USB-A and USB-C charging outlets for maximum flexibility
- Fast Charger with Power Delivery and Quick Charge protocols
- Spring-loaded clip options for quick and secure installation on a desk
- In compliance with BS 1363-3



Desk Mounted Extension Leads with USB Charging				
Code	Description	Cable	Rating	Finish
TP552240WH	2 Socket Clip On Lead 1.5 Metre 20 Watt A+C USB PD	1.5m x 1.25mm ²	13A/3120W	WHITE
TP552240BK	2 Socket Clip On Lead 1.5 Metre 20 Watt A+C USB PD	1.5m x 1.25mm ²	13A/3120W	BLACK

Travel Extension Leads with USB

13 AMP

1.25 mm CABLE

3120 WATT

- 13A rated
- 4 socket leads include keyhole slots for wall mounting
- In compliance with BS 1363-2



Unswitched Leads with USB Charging & Surge				
Code	Description	Cable	Rating	Finish
TP564210	4 Socket Lead 2 Metre 12 Watt A+A USB & Surge	2m x 1.25mm ²	13A/3120W	WHITE
TP564220	4 Socket Lead 2 Metre 15 Watt A+C USB & Surge	2m x 1.25mm ²	13A/3120W	WHITE

USB Chargers

2-YEAR
GUARANTEE

- PPS Programmable Power Supply technology with 30W/65W options
- Dual USB 1x A + 1x C ports (20W/30W option)
- Triple USB 1x A + 2x C ports (65W option)
- Quick and efficient charging, perfect for:
 - 20W - charging a smartphone or tablet and one other small device
 - 30W - charging a smartphone and a tablet or another device
 - 65W - charging multiple small devices or a single laptop
- Fast Charger with: Power Delivery and Quick Charge Protocols with 20W/30W/65W options
- In compliance with BS 1363-3



USB Chargers

Code	Description	Finish
TP6101	20W A+C Dual USB Charger with PD & QC	WHITE
TP6102	30W A+C Dual USB Charger with PD, QC & PPS	WHITE
TP6103	65W A+2C Triple USB Charger with PD, QC & PPS	WHITE

USB Chargers & Socket Adaptor

2-YEAR
GUARANTEE

- 1 Socket Adaptor
- 13A rated
- Dual USB 20W 1 x A + 1 x C ports
- Quick and efficient charging perfect for:
 - 20W - charging a smartphone or tablet and one other small device
- Fast Charger with Power Delivery and Quick Charge Protocols
- In compliance with BS 1363-3



USB Chargers & Socket Adaptor

Code	Description	Finish
TP6111	Socket Adaptor and 20W Dual A+C USB Charger with PD, QC	WHITE

USB Charging Travel Adaptor

2-YEAR
GUARANTEE

- Dual USB 20W 1 x A + 1 x C ports
- Quick and efficient charging, perfect for: charging a smartphone or tablet and one other device
- Fast Charger with Power Delivery and Quick Charge Protocols
- Suitable for use in USA (type A), UK (type G), EU (type C) and AU (type I) and many other international locations using these socket types
- Includes a handy Travel Bag to keep adaptor components safely together when on the go
- In compliance with BS 1363-3

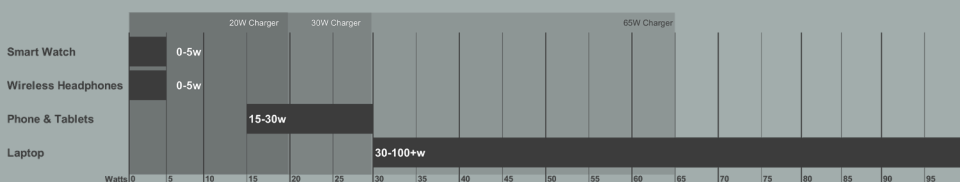


USB Chargers

Code	Description	Finish
TP6121	20W Dual A+C USB Charger for UK, US, EU & AU with PD, QC	WHITE

Know Your Watts!

- Devices charge at different speeds and are typically described in watts
- Small devices with small batteries typically require lower charging watts, whilst larger devices typically require a fast charge
- Devices can charge at a low wattages, but this extends charging time
- Having the right charger is essential for quick and efficient charging
- Chargers with higher ratings (e.g. 65W) can charge larger devices (such as laptops), or multiple devices at once without reducing charging speed



USB Charging Technologies

USB charging accessories include various charging technologies including:

Power Delivery (PD)

A fast-charging technology that delivers up to 100W of power through USB-C cables, allowing devices to optimise charging across various devices.

Quick Charge (QC)

A charging protocol developed by Qualcomm for Android devices to allow for even faster charging on devices with Quick Charge technology.

Programmable Power Supply (PPS)

Varies charging output based on a device's charging status to reduce conversion loss and reduce heat in connected devices to extend battery life.

RCD Plugs & Adaptors

- Non-latching, which requires the product power to be reset after each time a fault is detected and the device is tripped
- Cuts power in 30m/s when an imbalance is detected to prevent electrocution
- Double pole protected
- Essential for use in high risk areas such as construction sites



13A Adaptors		
Code	Description	Finish
RCDPWC	Type AC RCD Plug	WHITE
RCDPBWP	Type AC RCD Plug	BLACK
RCDAWC-BL	Type AC RCD Adaptor Plug	BLACK

Heavy Duty Accessories

- Rubber extension sockets
- Heavy duty 3 pin plugs
- 13A rating
- 1 or 2 socket options
- Black and white options



Heavy Duty Accessories		
Code	Description	Finish
RTS1GW	1g Trailing Socket	WHITE
RTS2GW	2g Trailing Socket	WHITE
RP13AW	13A Fused Plug	WHITE
RTS1GB	1g Trailing Socket	BLACK
RTS2GB	2g Trailing Socket	BLACK
RP13AB	13A Fused Plug	BLACK
RC3PBC	10A 3 Pin Black	BLACK

Plug Tops

- 5A and 13A rating
- 3 pin option
- Black and white options



Plug Tops		
Code	Description	Finish
TW13FP	13A Fused Plug	WHITE
TW05FP	5A Round Pin Fused Plug	WHITE
TB13FP	13A Fused Plug	BLACK

Adaptor Plugs

- 2 or 3 way fused and unfused plug-in adaptors
- Shaver adaptor sockets connect your shaver cable to a standard mains power plug
- Converts 1 socket into 2 or 3
- 3 pin and 13A rating plugs
- 1A rating shaver adaptor



Adaptor Plug		
Code	Description	Finish
TW2UAD	2W Adaptor Socket	WHITE
TW3FAD	3W 13A Fused Adaptor Socket	WHITE
TWSASK	1A Unfused Shaver Sockets Adaptors	WHITE

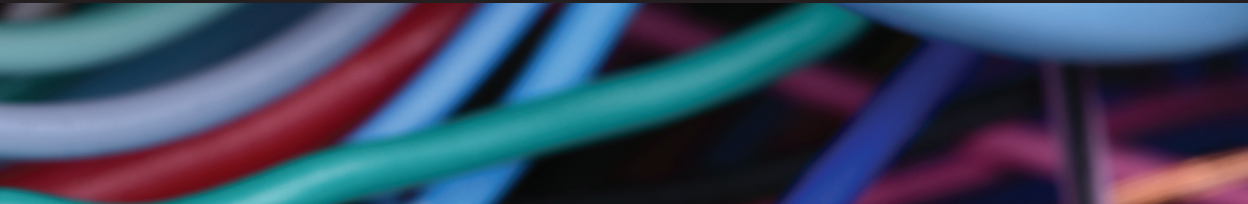
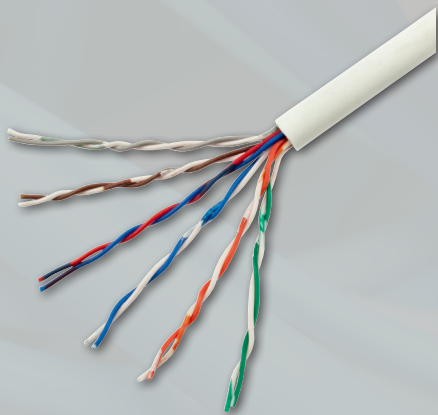
Low Voltage Cable

Tower offers a wide range of **Low Voltage Cable**. Tower's coaxial and satellite cable includes shotgun cable and a range of CT100 cable approved to the CAI benchmark standard. Also available are Alarm, Telephone, and Data Cable.



Contents

Satellite Cable	42
CCTV Coaxial Cable	42
Bell Wire	43
Alarm Cable	43
CW1308 Telephone Cable	43
Data Cable	44
Cable Carrier	45



Satellite Cable

- 100m and 250m reels
- High performance, low loss
- CAI certified
- Black sheath as standard, RG6 also in white
- For digital/satellite connection and high-speed data transfer



532BK



532WH



534BK



534B/250



536BK

RG6 Satellite Cable – 100m

Code	Description
532BK	RG6 75Ω 1/1.0mm conductor low-loss semi-air-spaced satellite down lead
532WH	RG6 75Ω 1/1.0mm conductor low-loss semi-air-spaced satellite down lead

Satellite Cable

Code	Description
534BK	DT100 coaxial cable, for digital/satellite connection and high-speed data transfer (100m)
534B/250	DT100 coaxial cable, for digital/satellite connection and high-speed data transfer (250m)

Satellite Cable – Shotgun

Code	Description
536BK	DT100 shotgun coaxial cable (100m)
536B/250	DT100 shotgun coaxial cable (250m)

CAI Approved Satellite Cable

Code	Description
535BK	CAI Approved CT100 coaxial cable (100m)
535B/250	CAI Approved CT100 coaxial cable (250m)

CCTV Coaxial Cable

- TV down lead and CCTV applications
- 100m reel
- Low-loss



533BK

RG59 CCTV – 100m

Code	Description
533BK	RG59 75Ω CCTV coaxial cable
538BK	RG59 75Ω CCTV coaxial + 2 core power cable

Bell Wire

- 100m reels
- Incorporates pit stripe



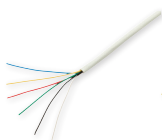
218

Bell Wire – 100m

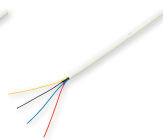
Code	Description
218	Bell wire

Alarm Cable

- 100m reels
- White sheath



630WH



631WH

Alarm Cable – 100m

Code	Description
630WH	4 core alarm cable, colour coded red, blue, yellow, black
631WH	6 core alarm cable, colour coded red, blue, yellow, black, white, green
632WH	8 core alarm cable, colour coded red, blue, yellow, black, white, green, orange, brown

CW1308 Telephone Cable

- 100m reels
- Complies with CW1308
- White sheath



19023



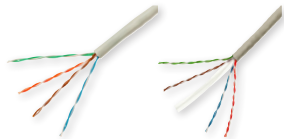
19026

CW1308 Telephone Cables

Code	Description
19023	3 pair
19024	4 pair
19026	6 pair

Data Cable

- 305m pull box
- In compliance with TIA/EIA 568-B
- Copper conductor
- Grey sheath



542

550

Cat 5e - 305m	
Code	Description
542	Cat 5e solid unshielded twisted pair

Cat 5e - 305m	
Code	Description
550	Cat 6 solid unshielded twisted pair

Data Cable Low Smoke Zero Halogen

- 305m pull box
- In compliance with TIA/EIA 568-B
- Copper conductor
- Purple sheath



544

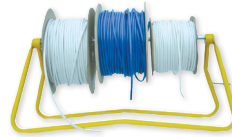
551

Cat 5e - 305m	
Code	Description
544	Cat 5e solid unshielded twisted pair - LSZH

Cat 5e - 305m	
Code	Description
551	Cat 6 solid unshielded twisted pair - LSZH

Cable Carrier

- Capable of carrying weight up to 50kg
- Unit weight up to 2.8kg
- Locking mechanism prevents accidental closure
- Fold away for easy storage
- Size Closed: 380 x 40 x 760mm
- Size Open: 340 x 340 x 760mm



SPAXA

Cable Carrier	
Code	Description
SPAXA	Cable Carrier

Index

Product Code	Page No.	Product Code	Page No.	Product Code	Page No.	Product Code	Page No.
218	43	22TAPE24	18	29HSM02	19	62BW20SP	14
542	44	22TAPE25	18	29HSM03	19	62BW25L	14
544	44	22TAPE26	18	29HSM04	19	62BW25P	14
550	44	22TAPE27	18	29HSM05	19	62BW32L	14
551	44	22TAPE28	18	29HSM06	19	62BW32P	14
1220	20	22TAPE29	18	31ARB12B	26	62BW40L	14
19023	43	23CB1	13	31ARB12G	26	62BW40P	14
19024	43	23CB2	13	31ARB12R	26	62BW50L	14
19026	43	23LC322	11	31ARB12W	26	62BW50P	14
410706	8	23LC323	11	31ARB17B	26	62BW60P	14
410708	8	23LC325	11	31ARB17G	26	62BW63L	14
411006	8	23PC242	11	32F10A	20	62BW75L	14
411008	8	23PC243	11	32F13A	20	62BW75P	14
411010	8	23PC244	11	32F3A	20	62BW90L	14
411206	8	23PC245	11	32F5A	20	62BW90P	14
411208	8	23PC246	11	32FMP	20	62CG20LB	15
411210	8	23SC03	11	32FUW	20	62CG20LG	15
411506	8	23SC05	11	33TM01	21	62CG20LR	15
411508	8	23SC15	11	33TM02	21	62CG20LW	15
411510	8	23SC30	11	33TM03	21	62CG20SB	15
411708	8	23SC60	11	44N4	9	62CG20SG	15
411710	8	27BR3	19	44RNB612	9	62CG20SR	15
412008	8	27BR4	19	44RNB616	9	62CG20SW	15
412010	8	27BU3	19	44RNB620	9	62CG25B	15
412208	8	27BU4	19	44RNB625	9	62CG25G	15
412508	8	27GY2	19	44RNB630	9	62CG25W	15
412510	8	27GY3	19	44RNB640	9	62CW20L	14
413008	8	27GY3R	19	44RNB650	9	62CW20P	14
413010	8	27GY4	19	44S3525	9	62CW20SL	14
414010	8	27GY4R	19	44S3535	9	62CW20SP	14
05TUB01	8	27GY5	19	44S3540	9	62CW25L	14
05TUB02	8	27GY6	19	44S3550	9	62CW25P	14
05TUB03	8	27MR3R	19	44S3575	9	62CW32L	14
05TUB04	8	29CT12	10	44S4006	9	62CW32P	14
05TUB05	8	29CT22	10	44S4008	9	62CW40L	14
12CAP25	9	29CT24	10	44S4010	9	62CW40P	14
12CAP30	9	29CT32	10	44S4012	9	62CW50L	14
12CAP35	9	29CT34	10	44S4016	9	62CW50P	14
21EC4	20	29CT36	10	44S4020	9	62CW63L	14
21EC4/2	20	29CT44	10	44S4025	9	62CW63P	14
21EC5	20	29CT46	10	44S4040	9	62CW75L	14
21EC5/2	20	29CT56	10	44S4050	9	62CW75P	14
21EC5/3	20	29CT71	10	44W4	9	62CW90L	14
21EC6	20	29CT73	10	532BK	42	62CW90P	14
22TAPE01	18	29CT75	10	532WH	42	630WH	43
22TAPE02	18	29CT80SS	24	533BK	42	631WH	43
22TAPE03	18	29CT81SS	24	534B/250	42	632WH	43
22TAPE04	18	29CT83SS	24	534BK	42	63SWA05	15
22TAPE05	18	29CT84SS	24	535B/250	42	63SWA06	15
22TAPE06	18	29CT85SS	24	535BK	42	63SWA07	15
22TAPE07	18	29CT88SS	24	536B/250	42	63SWA08	15
22TAPE08	18	29CT89SS	24	536BK	42	63SWA09	15
22TAPE09	18	29CT90SS	24	538BK	42	63SWA10	15
22TAPE21	18	29CT92SS	24	62BW20L	14	63SWA11	15
22TAPE22	18	29CTM4SS	24	62BW20P	14	63SWA12	15
22TAPE23	18	29CTM6SS	24	62BW20SL	14	63SWA14	15

Index

Product Code	Page No.	Product Code	Page No.	Product Code	Page No.
63SWA16	15	77CGPF4P	6	TP31571	33
63SWA18	15	77CR06P	7	TP31581	33
63SWA20	15	77CR07P	7	TP31592	33
64LSF28	25	77CR09P	7	TP32024	33
64LSF30	25	77CW04P	7	TP32062	33
64LSF302	25	77CW05P	7	TP3901	33
64LSF32	25	77CW06P	7	TP40514	31
64LSF34	25	77CW07P	7	TP41014	31
64LSF342	25	77CW09P	7	TP41524	31
64LSF37	25	77CW12P	7	TP42534	31
64LSF382	25	77CW15P	7	TP42594	31
64LSF40	25	77CW19P	7	TP45034	31
64LSF43	25	77CW25P	7	TP5012	34
64SBS20B	26	DB152	17	TP5015	34
64SBS20W	26	DB162	17	TP5022	34
64SBS25B	26	DB163	17	TP5025N	34
64SBS25W	26	DB164	17	TP50408	34
66GR20C	18	DB165	17	TP5042	34
66GR20CQ	18	DB166	17	TP5042N	34
66GR20P	18	DB167	17	TP5045	34
66GR20PQ	18	DB168	17	TP5062	34
66GR25C	18	DB169	17	TP5065	34
66GR25CQ	18	DB170	17	TP5142	34
66GR25P	18	DB2540	16	TP5162	34
66GR25PQ	18	DB2541	16	TP53102TN	34
66GR32C	18	DB2542	16	TP5342	34
66GR32CQ	18	DB2543	16	TP5362	34
66GR32P	18	DB2544	16	TP54408	34
66GR32PQ	18	DB2545	16	TP5442B	34
70CGDKF15	6	DB2546	16	TP5445B	34
70CGDKF25	6	DB2547	16	TP552230BK	35
70CGKF10	6	DB2548	16	TP552230WH	35
70CGKF100	6	RC3PBC	38	TP552240BK	35
70CGKF15	6	RCDAWC-BL	38	TP552240WH	35
70CGKF160	6	RCDPBWP	38	TP564210	35
70CGKF25	6	RCDPWC	38	TP564220	35
70CGKF40	6	RP13AB	38	TP6101	36
70CGKF60	6	RP13AW	38	TP6102	36
70FR15	24	RPEWT50	21	TP6103	36
70FR25	24	RTS1GB	38	TP6111	36
70FR40	24	RTS1GW	38	TP6121	36
70FR60	24	RTS2GB	38	TW05FP	39
72CT05P	7	RTS2GW	38	TW13FP	39
72CT06P	7	SPAXA	45	TW2UAD	39
77CB04P	7	TB13FP	39	TW3FAD	39
77CB05P	7	TP10412	30	TWSASK	39
77CB06P	7	TP10812	30		
77CB07P	7	TP11222	30		
77CB09P	7	TP12032	30		
77CB12P	7	TP20514	30		
77CB15P	7	TP21014	30		
77CB19P	7	TP21524	30		
77CB25P	7	TP22024	30		
77CGPF10P	6	TP22534	30		
77CGPF1P	6	TP25034	30		
77CGPF25P	6	TP31014	33		





With over 65 years of electrical industry experience, Deta has grown to become a trusted market-leading manufacturer and distributor of wiring, lighting, cable management and electrical installation accessories, with a reputation for unrivalled quality, reliability, service and value for money. As the number one electrical brand of choice amongst new build housing developers, Deta's products are widely specified and installed across the private and social housing sectors, as well as high rise developments, student accommodation and care homes.



Steeped in over 25 years of history, Deta Electrical's long established Vimark brand holds a reputation for the supply of high quality, value for money electrical and wiring accessories. Offering a wide portfolio of products, including wiring accessories, motion sensors, ventilation, hand dryers, back boxes and electrosparcs, Vimark is a long established and trusted brand that supports electrical contractors with their everyday installation requirements.



TTE is a market leading brand of electrical conduit tube and fittings, combining the former Top Tubes Electrical and Stephen Glover businesses. With more than 50 years' experience, TTE has been specified and installed on many high-profile projects, including the London 2012 Olympic site, Wembley Stadium, Westfield Shopping Centre, Dubai International Airport and The Louvre Museum Abu Dhabi. TTE offers a reliable and best in class cable management solution that is fully compliant with British Standards.



Established in 1978, Brackenheath is renowned for supplying high quality and competitively priced domestic and commercial lighting products. Through continuous investment in LED and sensing technologies, Brackenheath pioneered the design of its market leading iSpot® range of slim profile, driverless LED Floodlights and continues to lead the way in bringing to market new and innovative LED lighting solutions.



Since its inception in 1908, Briticent Site Electrics has enjoyed more than 100 years of successful trading with a long-standing customer base. Briticent built its reputation on the Gripper® range of handlamps, and over the years has developed a core range of essential site lighting and power distribution products. Briticent continues to lead the way with new and innovative energy saving products, becoming the site lighting brand of choice amongst electrical installers throughout the UK and Ireland.



Established in 1976, Channel is a leading manufacturer of emergency LED lighting and safety systems and a key distributor of the UK's leading brands for fire detection solutions. Renowned for the breadth and depth of each product range, Channel has gained a loyal customer base driven by an excellence in technical and customer support. Proud to be affiliated with ICEL, LIA and EDA, Channel are registered with BSI and are members of the Apollo Partner Plus programme.



Deta.e offers products that seamlessly combine Deta Electrical's core value of environmental preservation with its long established and trusted reputation for delivering high quality electrical products at competitive prices. Offering a range of smart, safe, and secure EV charge points, Deta.e embraces cutting edge technologies that offer sustainable solutions to assist homeowners and businesses in making an easy transition to a new energy efficient future. (deta-e.co.uk)



A trusted UK industry leader synonymous with quality and innovation, Timeguard has more than 25 years' experience in the manufacture and sale of time, light, safety, wi-fi and climate control electrical products. Continuously delivering energy savings that owners and occupiers are looking for, alongside the creation of new designs that offer easy installation, Timeguard has become a favourite among homeowners and installers. (timeguard.com)

Think electrical, think... deta[▲]



Deta Electrical Company Limited

Panattoni Park, Luton Road, Chalton,
Bedfordshire, LU4 9TT

t: 01582 544 500

e: sales.ce@deta.co.uk

w: deta.co.uk