	IS3N-20AC, IS3N-32AC	3 POLE 20 & 32 AMP AC ISOLATOR SWITCHES
	IS4N-20AC, IS4N-32AC, IS4N-40AC, IS4N-63AC & IS4N-100AC	4 POLE 20, 32, 40, 63 & 100 AMP AC ISOLATOR SWITCHES

Features

- Tough & Durable Thermoplastic
- IP66
- Interlocking front covers, can only be removed when in the 'OFF' position
- Lockable switch prevents tampering

Safety Instructions

- These instructions should be read carefully and retained after installation for future reference and maintenance.
- Ensure that the mains power is isolated before carrying out installation or maintenance.
- Check that the total load on the circuit including this timer does not exceed the rating of the circuit cable, fuse or circuit breaker.
- This product must be installed in accordance with the latest edition of the IET Wiring Regulations (BS7671) and current Building Regulations. If in any doubt, consult a qualified electrician.

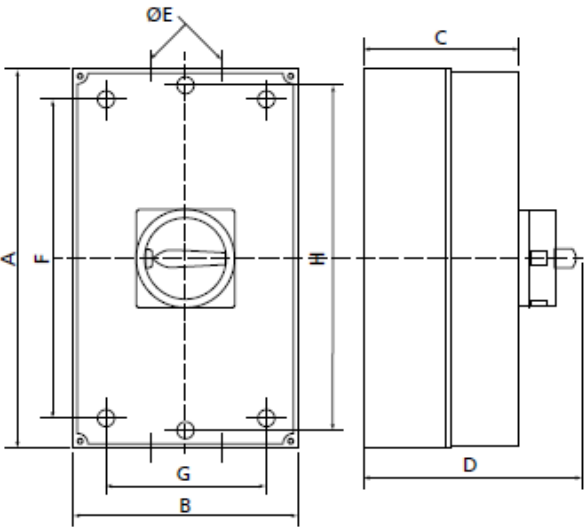
Environmental Instructions

This product may contain substances that can be hazardous to the environment if not disposed of properly. Electrical and electronic equipment should never be disposed of with general household waste but must be separated for its correct treatment and recovery. Where possible recycle your packaging.


Installation Instructions

- The Weathersafe Isolator range must be mounted on a vertical flat surface
- Remove cover (the switch must be in the OFF position)
- Mount the rear box on a vertical surface, using the fixings and wall plugs as necessary
- The fixing dimensions are marked on the back of the rear box
- Route cables either through the through the M25 top and bottom cable entry points, or the relevant drill-out/cut-out entry points; a knife can be used to cutout entry points for M12, M16 & M20 sizes
- A cable gland of IP66 or higher should be used in order to maintain the IP rating
- Terminate cables, tightening to a torque of 1.2Nm to 1.8Nm
- Replace cover ensuring that the gasket is fully in place in order to retain the IP66 rating; do not overtighten screws and do not use an electric screwdriver
- Advice should be sought before installing this product in an environment where it is likely to be subject to chemicals, oils or solvents


Dimensions:





Model	A	B	C	D	E	F	G	H
IS3N-20, IS3N-32, IS4N-20, IS4N-32	190 mm	95 mm	82 mm	110 mm	2x M25	115 mm	75 mm	170 mm
IS4N-40, IS4N-63	200 mm	120 mm	88 mm	117 mm	2x M20, M25, 1x M32	171 mm	105 mm	175 mm
IS4N-100AC	320 mm	206 mm	110 mm	140 mm	2x M20, M25, 1x M32	283 mm	185 mm	290 mm


	IS3N-20AC, IS3N-32AC	3 POLE 20 & 32 AMP AC ISOLATOR SWITCHES
	IS4N-20AC, IS4N-32AC, IS4N-40AC, IS4N-63AC & IS4N-100AC	4 POLE 20, 32, 40, 63 & 100 AMP AC ISOLATOR SWITCHES


Specification

IS3N-32AC and IS4N-32AC						
Manual Motor Controller				EN60947-3		
Motor	120V	240V	415V	50Hz 	220V 415V	
3ph HP	1.5	3	5	lu = lth = AC21A	32A	
1ph HP	0.5	1.5	3	AC-23A 3ph	7.5kW	
32A 415V AC				AC-3 1ph	5.5Kw	

IS3N-20AC and IS4N-20AC						
Manual Motor Controller				EN60947-3		
Motor	120V	240V	415V	50Hz 	220V 415V	
3ph HP	1.5	3	5	lu = lth = AC21A	20A	
1ph HP	0.5	1.5	3	AC-23A 3ph	5.5kW	
20A 415V AC				AC-3 1ph	4.0kW	

IS4N-40AC						
Manual Motor Controller				EN60947-3		
Motor	120V	240V	415V	50Hz 	220V	415V
3ph HP	3	7.5	15	lu = lth = AC21A	40A	
1ph HP	1.5	3	7.5	AC-23A 3ph	7.5kW	15kW
40A 415V AC				AC-3 1ph	7.5kW	11kW

IS4N – 63AC						
Manual Motor Controller				EN60947-3		
Motor	120V	240V	415V	50Hz 	220V	415V
3ph HP	5	10	20	lu = lth = AC21A	63A	
1ph HP	2	5	10	AC-23A 3ph	11kW	22kW
63A 415V AC				AC-3 1ph	11kW	22kW

IS4N-100AC						
Manual Motor Controller				EN60947-3		
Motor	120V	240V	415V	50Hz 	220V	415V
3ph HP	10	25	50	lu = lth = AC21A	100A	
1ph HP	5	15	30	AC-23A 3ph	22kW	37kW
100A 415V AC				AC-3 1ph	18.5kW	30kW

Model:	Terminal Capacity	Cable Entry	
IS3N-20AC, IS3N-32AC, IS4N-20AC, IS4N-32AC	6mm ² max.	Top Bottom: Side: Rear:	2 x M25 2 x M25 Drill Outs Drill Outs
IS4N-40AC, IS4N-63AC	16mm ² max.	Top Bottom: Side: Rear:	2x M20, 2 x M25, 1x M32 2x M20, 2 x M25, 1x M32 Drill Outs Drill Outs
IS4N-100AC	25mm ² max.	Top Bottom: Side: Rear:	2x M25, 2 x M32, 1x M40 2x M25, 2 x M32, 1x M40 Drill Outs Drill Outs

Maintenance Instruction

Care should be taken when cleaning this product.

- Inside the lid should only be wiped with a clean dry cloth.
- The outside can be cleaned with mild detergent.
- Solvent based cleaners should not be used.