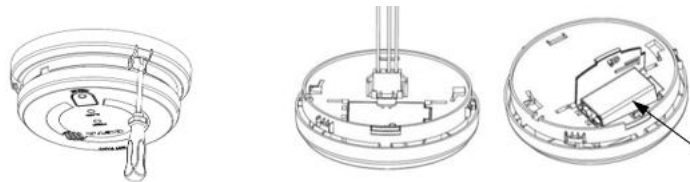


This FAQ covers Deta domestic safety smoke and heat alarms

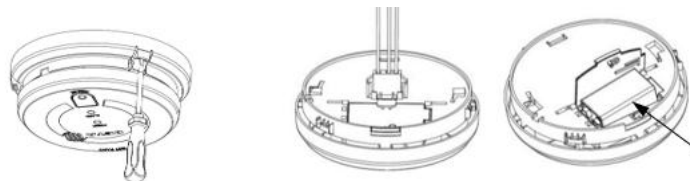
Smoke Alarms

- Q: My alarm keeps going off
- Please give the alarms a vacuum around the front and sides to remove any hair or dust that may be trapped inside the alarm
- Q: I have cleaned the alarms and they are still sounding
- Usually all the alarms in a property are connected together so that they all sound in alarm conditions. When the alarms are in standby, the red LED on each alarm should flash every 30-45 seconds. The red LED will flash rapidly on the alarm that is causing the system to go into alarm mode – please unplug this alarm from the ceiling this will stop the others from sounding.
- Q: My alarm is beeping every minute
- Replace the battery with a good quality 9V alkaline battery
Turn the power off to the alarms and remove the alarm from the ceiling to access the battery compartment



Heat Alarms

- Q: My alarm is beeping every minute
- Replace the battery with a good quality 9V alkaline battery
Turn the power off to the alarms and remove the alarm from the ceiling to access the battery compartment



CO Alarms

- Q: My Alarm is making 3 beeps every minuet
- The alarm has reached the end of life and needs to be replaced

The instructions are available on the website at [Instruction Sheets | DETA Electrical](#)