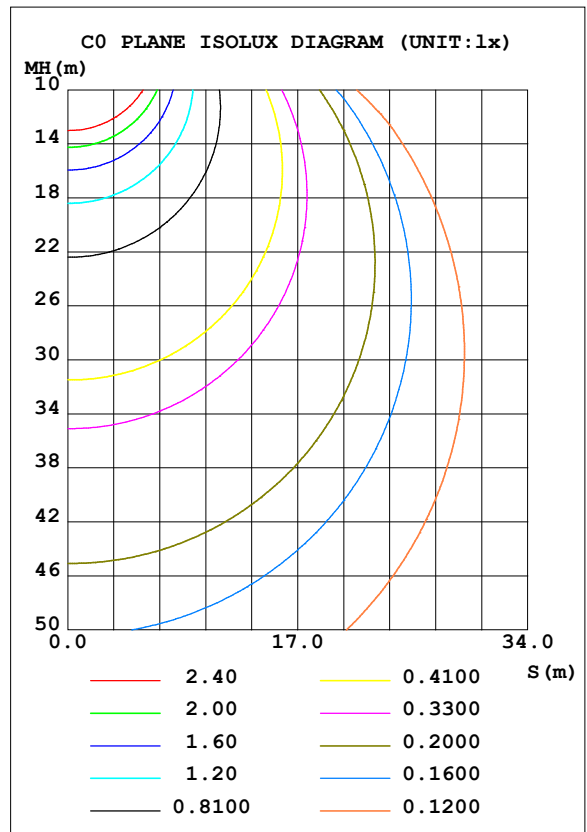
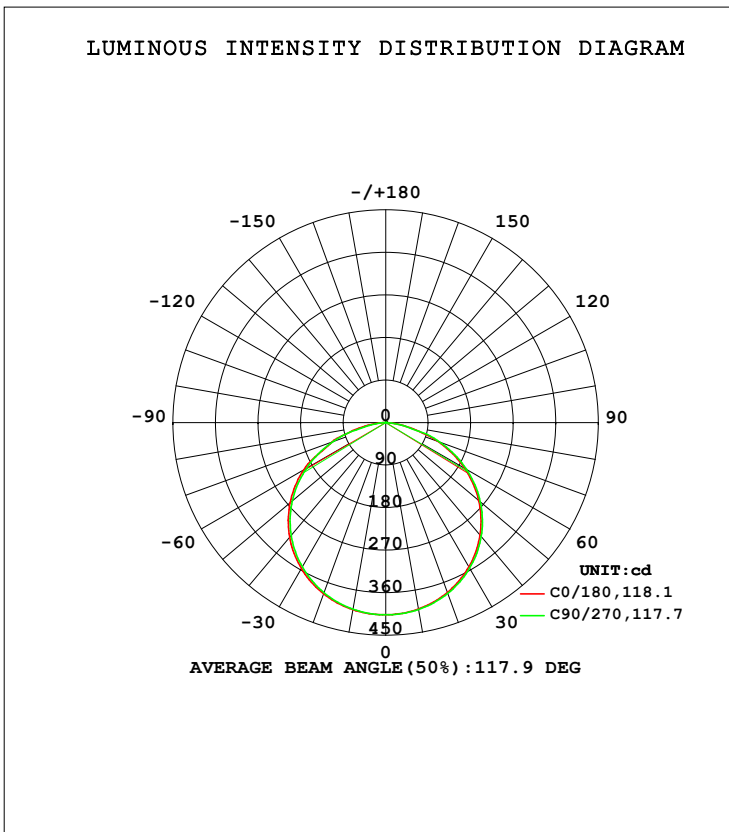


LUMINAIRE PHOTOMETRIC TEST REPORT

Test:U:230.07V I:0.0407A P:8.4610W PF:0.9032 Freq:50.00Hz Lamp Flux:1213.83x1 lm		
NAME: Sensor Light	TYPE:	WEIGHT:
SPEC.:	DIM.:	SERIAL No.:EDG2511100080L003
MFR.: IQ Group (WuNing) Ltd.	SUR.:	Shielding Angle:

DATA OF LAMP		PHOTOMETRIC DATA Eff: 143.46 lm/W			
MODEL	IQ-BR-BH9W-PIR-D-AN	I _{max} (cd)	406.5	S/MH (C0/180)	1.29
NOMINAL POWER (W)		LOR (%)	100.0	S/MH (C90/270)	1.30
RATED VOLTAGE (V)		TOTAL FLUX (lm)	1213.8	η UP, DN (C0-180)	0.1, 49.8
NOMINAL FLUX (lm)	1213.83	CIE CLASS	DIRECT	η UP, DN (C180-360)	0.1, 50.1
LAMPS INSIDE	1	η up (%)	0.1	CIBSE SHR NOM	1.50
TEST VOLTAGE (V)		η down (%)	99.9	CIBSE SHR MAX	1.50



C Range: 0 - 360DEG
 C Interval: 22.5DEG
 Test Speed: HIGH
 Temperature: 25.3DEG
 Operators: SAM
 Test Date: 2025-11-11

γ Range: 0 - 180DEG
 γ Interval: 1.0DEG
 Test System: EVERFINE GO-R5000_V2 SYSTEM V2.0.366
 Humidity: 56%
 Test Distance: 2.604m [K=1.0000]
 Remarks:

Checker:

Assessor:

ZONAL FLUX DIAGRAM

ZONAL FLUX DIAGRAM:

γ	C0	C45	C90	C135	C180	C225	C270	C315	γ	Φ zone	Φ total	%lum,lamp
10	401.9	401.5	400.7	400.2	400.3	400.8	401.5	401.9	0- 10	38.55	38.55	3.18,3.18
20	385.3	384.3	382.8	381.8	382.3	383.3	384.5	385.4	10- 20	111.2	149.8	12.3,12.3
30	356.9	355.5	353.1	351.6	352.3	353.8	355.4	356.8	20- 30	170.8	320.6	26.4,26.4
40	316.6	314.8	311.5	309.5	310.4	312.4	314.4	316.3	30- 40	209.8	530.4	43.7,43.7
50	264.4	262.3	258.2	255.9	256.9	259.1	261.4	263.7	40- 50	222.2	752.6	62,62
60	200.8	198.5	193.8	191.1	192.2	195.1	197.3	200.2	50- 60	204.9	957.5	78.9,78.9
70	121.6	124.8	118.6	117.5	118.4	120.7	123.1	126.3	60- 70	157.2	1115	91.8,91.8
80	44.95	39.13	36.16	32.00	37.94	33.29	36.80	36.37	70- 80	83.36	1198	98.7,98.7
90	0.4004	0.2341	0.0731	0.1569	0.1665	0.1447	0.0654	0.2308	80- 90	14.25	1212	99.9,99.9
100	0.2649	0.2246	0.0993	0.1076	0.0584	0.0672	0.0620	0.1787	90-100	0.1505	1212	99.9,99.9
110	0.2566	0.2503	0.1491	0.1600	0.0951	0.1048	0.0958	0.1888	100-110	0.1559	1213	99.9,99.9
120	0.3271	0.3152	0.2291	0.2300	0.1558	0.1590	0.1566	0.2500	110-120	0.1896	1213	99.9,99.9
130	0.3799	0.3196	0.2984	0.2959	0.2286	0.2317	0.2310	0.2717	120-130	0.2251	1213	99.9,99.9
140	0.3414	0.3036	0.3122	0.3142	0.3149	0.3189	0.3157	0.3160	130-140	0.2321	1213	100,100
150	0.3156	0.3123	0.3153	0.3119	0.3956	0.3959	0.4001	0.3985	140-150	0.2088	1214	100,100
160	0.3425	0.3357	0.3380	0.3398	0.4328	0.4325	0.4371	0.4351	150-160	0.1713	1214	100,100
170	0.3879	0.3853	0.3838	0.3880	0.4782	0.4769	0.4808	0.4812	160-170	0.1155	1214	100,100
180	0.4582	0.4591	0.4635	0.4635	0.4591	0.4607	0.4626	0.4633	170-180	0.0430	1214	100,100
DEG	LUMINOUS INTENSITY:cd									UNIT:lm		

Conical surface Flux(90deg): 641.77 lm

%lum = 52.9%

%lamp = 52.9%

Conical surface Flux(120deg): 957.53 lm

%lum = 78.9%

%lamp = 78.9%

C Range: 0 - 360DEG
C Interval: 22.5DEG
Test Speed: HIGH
Temperature:25.3DEG
Operators:SAM
Test Date:2025-11-11

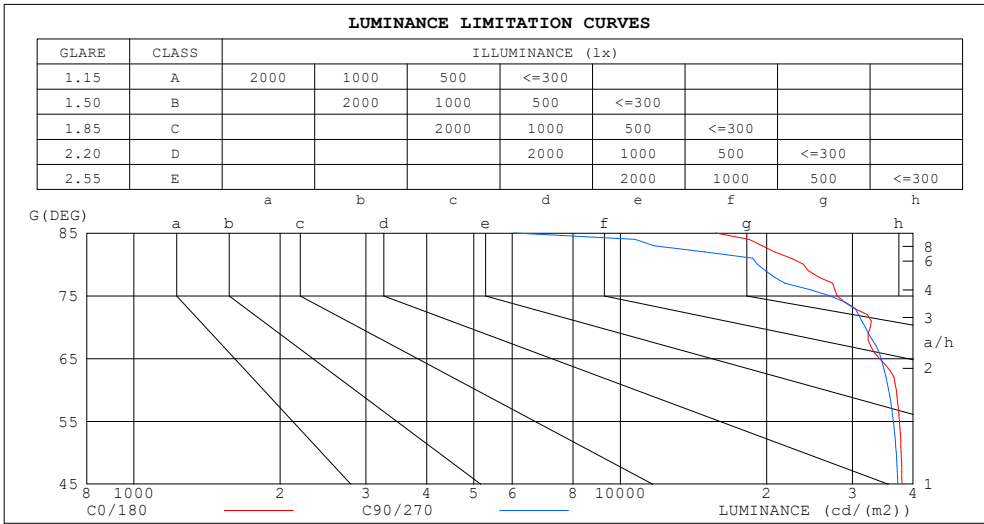
γ Range: 0 - 180DEG
 γ Interval: 1.0DEG
Test System:EVERFINE GO-R5000_V2 SYSTEM V2.0.366
Humidity:56%
Test Distance:2.604m [K=1.0000]
Remarks:

Checker:

Assessor:

LUMINANCE LIMITATION CURVES

Test:U:230.07V I:0.0407A P:8.4610W PF:0.9032 Freq:50.00Hz Lamp Flux:1213.83x1 lm		
NAME: Sensor Light	TYPE:	WEIGHT:
SPEC.:	DIM.:	SERIAL No.:EDG2511100080L003
MFR.: IQ Group (WuNing) Ltd.	SUR.:	Shielding Angle:



LUMINANCE cd/(m2)		
G (DEG)	C0/180	C90/270
85	15704	6043
80	23796	19143
75	27895	26905
70	32675	31881
65	34073	34379
60	36920	35624
55	37504	36423
50	37818	36925
45	37958	37230

C Range: 0 - 360DEG
 C Interval: 22.5DEG
 Test Speed: HIGH
 Temperature:25.3DEG
 Operators:SAM
 Test Date:2025-11-11

γ Range: 0 - 180DEG
 γ Interval: 1.0DEG
 Test System:EVERFINE GO-R5000_V2 SYSTEM V2.0.366
 Humidity:56%
 Test Distance:2.604m [K=1.0000]
 Remarks:

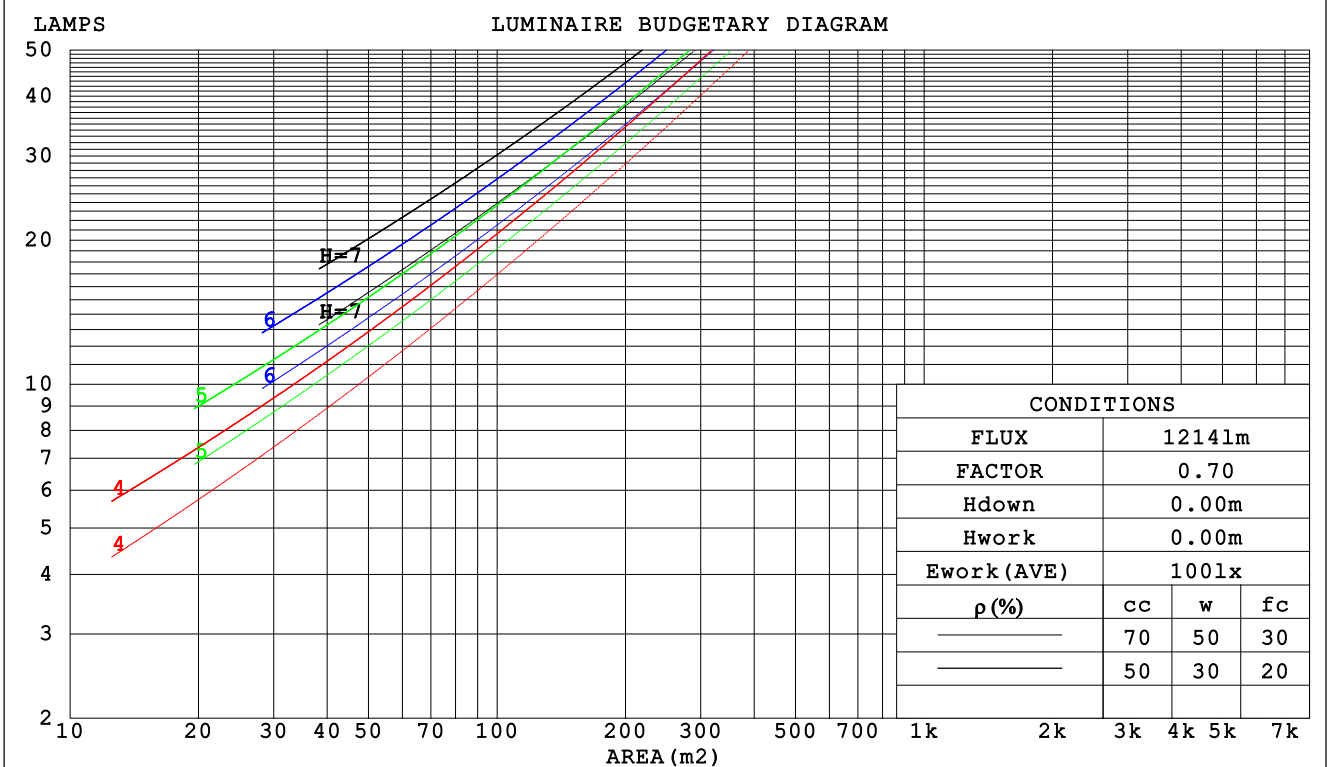
Checker:

Assessor:

CU AND LUMINAIRE BUDGETARY ESTIMATE DIAGRAM

Test:U:230.07V I:0.0407A P:8.4610W PF:0.9032 Freq:50.00Hz Lamp Flux:1213.83x1 lm		
NAME: Sensor Light	TYPE:	WEIGHT:
SPEC.:	DIM.:	SERIAL No.:EDG2511100080L003
MFR.: IQ Group (WuNing) Ltd.	SUR.:	Shielding Angle:

ρ_{cc}	80%			70%			50%			30%			10%			0
ρ_w	50%	30%	10%	50%	30%	10%	50%	30%	10%	50%	30%	10%	50%	30%	10%	0
ρ_{fc}	20%			20%			20%			20%			20%			0
RCR	RCR:Room Cavity Ratio						Coefficients of Utilization(CU)									
0.0	1.19	1.19	1.19	1.16	1.16	1.16	1.11	1.11	1.11	1.06	1.06	1.06	1.02	1.02	1.02	.00
1.0	1.04	.00	.96	1.02	.98	.94	.98	.94	.91	.94	.91	.89	.90	.88	.86	.84
2.0	.91	.84	.78	.89	.82	.77	.85	.80	.75	.82	.77	.73	.79	.75	.72	.70
3.0	.79	.71	.65	.78	.70	.64	.75	.68	.63	.72	.66	.62	.69	.65	.61	.58
4.0	.70	.61	.54	.69	.60	.54	.66	.59	.53	.64	.58	.53	.62	.56	.52	.50
5.0	.62	.53	.47	.61	.53	.46	.59	.52	.46	.57	.51	.45	.55	.50	.45	.43
6.0	.56	.47	.41	.55	.47	.40	.53	.46	.40	.52	.45	.40	.50	.44	.39	.37
7.0	.51	.42	.36	.50	.42	.36	.48	.41	.35	.47	.40	.35	.46	.39	.35	.33
8.0	.46	.38	.32	.46	.37	.32	.44	.37	.31	.43	.36	.31	.42	.36	.31	.29
9.0	.42	.34	.29	.42	.34	.28	.41	.33	.28	.40	.33	.28	.39	.32	.28	.26
10.0	.39	.31	.26	.39	.31	.26	.38	.30	.26	.37	.30	.25	.36	.30	.25	.24



C Range: 0 - 360DEG
 C Interval: 22.5DEG
 Test Speed: HIGH
 Temperature:25.3DEG
 Operators:SAM
 Test Date:2025-11-11

γ Range: 0 - 180DEG
 γ Interval: 1.0DEG
 Test System:EVERFINE GO-R5000_V2 SYSTEM V2.0.366
 Humidity:56%
 Test Distance:2.604m [K=1.0000]
 Remarks:

Checker:

Assessor:

WEC AND CCEC

Test:U:230.07V I:0.0407A P:8.4610W PF:0.9032 Freq:50.00Hz Lamp Flux:1213.83x1 lm		
NAME: Sensor Light	TYPE:	WEIGHT:
SPEC.:	DIM.:	SERIAL No.:EDG2511100080L003
MFR.: IQ Group (WuNing) Ltd.	SUR.:	Shielding Angle:

ρcc	80%			70%			50%			30%			10%			0
ρw	50%	30%	10%	50%	30%	10%	50%	30%	10%	50%	30%	10%	50%	30%	10%	0
ρfc	20%			20%			20%			20%			20%			0
RCR	RCR:Room Cavity Ratio						Wall Exitance Coefficients (WEC)									
0.0																
1.0	.305	.173	.055	.298	.170	.054	.284	.163	.052	.272	.157	.050	.261	.151	.049	
2.0	.290	.159	.049	.284	.156	.048	.272	.151	.047	.262	.147	.046	.251	.142	.045	
3.0	.270	.144	.043	.265	.142	.043	.254	.138	.042	.244	.134	.041	.236	.130	.040	
4.0	.250	.130	.038	.245	.128	.038	.236	.125	.037	.227	.122	.037	.219	.119	.036	
5.0	.231	.118	.034	.227	.116	.034	.219	.114	.034	.211	.111	.033	.204	.109	.033	
6.0	.215	.108	.031	.211	.106	.031	.203	.104	.030	.197	.102	.030	.190	.100	.030	
7.0	.200	.099	.028	.196	.098	.028	.190	.096	.028	.184	.094	.027	.178	.092	.027	
8.0	.187	.091	.026	.184	.090	.026	.178	.089	.025	.172	.087	.025	.167	.086	.025	
9.0	.175	.085	.024	.172	.084	.024	.167	.082	.023	.162	.081	.023	.157	.080	.023	
10.0	.164	.079	.022	.162	.078	.022	.157	.077	.022	.153	.076	.022	.148	.075	.021	

ρcc	80%			70%			50%			30%			10%			0
ρw	50%	30%	10%	50%	30%	10%	50%	30%	10%	50%	30%	10%	50%	30%	10%	0
ρfc	20%			20%			20%			20%			20%			0
RCR	RCR:Room Cavity Ratio						Ceiling Cavity Exitance Coefficients (CCEC)									
0.0	.191	.191	.191	.164	.164	.164	.112	.112	.112	.064	.064	.064	.021	.021	.021	
1.0	.181	.157	.136	.155	.135	.117	.106	.093	.081	.061	.054	.047	.020	.017	.015	
2.0	.173	.133	.099	.148	.114	.086	.102	.079	.060	.059	.046	.035	.019	.015	.011	
3.0	.165	.115	.075	.142	.099	.065	.097	.069	.046	.056	.040	.027	.018	.013	.009	
4.0	.158	.102	.059	.136	.088	.051	.093	.061	.036	.054	.036	.021	.017	.012	.007	
5.0	.151	.092	.048	.129	.079	.042	.089	.055	.029	.052	.032	.017	.017	.011	.006	
6.0	.144	.083	.040	.123	.072	.035	.085	.050	.025	.049	.030	.015	.016	.010	.005	
7.0	.137	.076	.034	.118	.066	.030	.081	.046	.021	.047	.027	.013	.015	.009	.004	
8.0	.130	.071	.030	.112	.061	.026	.078	.043	.018	.045	.025	.011	.015	.008	.004	
9.0	.124	.066	.026	.107	.057	.023	.074	.040	.016	.043	.024	.010	.014	.008	.003	
10.0	.119	.061	.023	.102	.053	.020	.071	.037	.014	.041	.022	.009	.013	.007	.003	

C Range: 0 - 360DEG
 C Interval: 22.5DEG
 Test Speed: HIGH
 Temperature:25.3DEG
 Operators:SAM
 Test Date:2025-11-11

γ Range: 0 - 180DEG
 γ Interval: 1.0DEG
 Test System:EVERFINE GO-R5000_V2 SYSTEM V2.0.366
 Humidity:56%
 Test Distance:2.604m [K=1.0000]
 Remarks:

Checker:

Assessor:

UGR(Unified Glare Rating) Table

Test:U:230.07V I:0.0407A P:8.4610W PF:0.9032 Freq:50.00Hz Lamp Flux:1213.83x1 lm										
NAME: Sensor Light					TYPE:			WEIGHT:		
SPEC.:					DIM.:			SERIAL No.:EDG2511100080L003		
MFR.: IQ Group (WuNing) Ltd.					SUR.:			Shielding Angle:		
ceiling/cavity	0.7	0.7	0.5	0.5	0.3	0.7	0.7	0.5	0.5	0.3
walls	0.5	0.3	0.5	0.3	0.3	0.5	0.3	0.5	0.3	0.3
working plane	0.2	0.2	0.2	0.2	0.2	0.2	0.2	0.2	0.2	0.2
Room dimensions	Viewed crosswise					Viewed endwise				
x = 2H y = 2H	25.7	27.2	25.9	27.4	27.6	25.5	27.0	25.8	27.3	27.5
3H	27.1	28.5	27.4	28.7	29.0	27.0	28.5	27.3	28.7	28.9
4H	27.6	29.0	28.0	29.2	29.5	27.6	28.9	27.9	29.2	29.5
6H	28.0	29.3	28.3	29.5	29.8	27.8	29.1	28.1	29.3	29.6
8H	28.1	29.3	28.4	29.6	29.9	27.8	29.0	28.2	29.3	29.6
12H	28.1	29.3	28.5	29.6	29.9	27.8	29.0	28.2	29.3	29.6
4H 2H	26.3	27.6	26.6	27.9	28.1	26.2	27.5	26.5	27.8	28.0
3H	27.9	29.1	28.3	29.4	29.7	27.9	29.1	28.2	29.3	29.7
4H	28.6	29.6	28.9	30.0	30.3	28.5	29.6	28.9	29.9	30.3
6H	29.0	30.0	29.4	30.3	30.7	28.8	29.8	29.2	30.1	30.5
8H	29.1	30.0	29.6	30.4	30.8	28.9	29.8	29.3	30.1	30.5
12H	29.2	30.0	29.6	30.4	30.8	28.9	29.7	29.3	30.1	30.5
8H 4H	28.8	29.7	29.2	30.1	30.4	28.8	29.7	29.2	30.0	30.4
6H	29.4	30.1	29.8	30.5	30.9	29.2	29.9	29.6	30.3	30.7
8H	29.6	30.2	30.0	30.6	31.1	29.3	29.9	29.7	30.3	30.8
12H	29.7	30.2	30.1	30.7	31.2	29.3	29.8	29.8	30.3	30.8
12H 4H	28.8	29.6	29.2	30.0	30.4	28.8	29.6	29.2	30.0	30.4
6H	29.4	30.0	29.8	30.5	30.9	29.2	29.8	29.7	30.3	30.7
8H	29.6	30.2	30.1	30.6	31.1	29.3	29.9	29.8	30.3	30.8
Variations with the observer position at spacings:										
S = 1.0H	+ 0.2 / - 0.3					+ 0.2 / - 0.2				
1.5H	+ 0.3 / - 0.4					+ 0.2 / - 0.3				
2.0H	+ 0.2 / - 0.3					+ 0.2 / - 0.4				

CIE Pub.117, 1214 lm Total Lamp Luminous Flux Corrected ($8\log(F/F_0) = 0.7$)

C Range: 0 - 360DEG
C Interval: 22.5DEG
Test Speed: HIGH
Temperature:25.3DEG
Operators:SAM
Test Date:2025-11-11

γ Range: 0 - 180DEG
 γ Interval: 1.0DEG
Test System:EVERFINE GO-R5000_V2 SYSTEM V2.0.366
Humidity:56%
Test Distance:2.604m [K=1.0000]
Remarks:

Checker:

Assessor:

UTILIZATION FACTORS TABLE

Test:U:230.07V I:0.0407A P:8.4610W PF:0.9032 Freq:50.00Hz Lamp Flux:1213.83x1 lm		
NAME: Sensor Light	TYPE:	WEIGHT:
SPEC.:	DIM.:	SERIAL No.:EDG2511100080L003
MFR.: IQ Group (WuNing) Ltd.	SUR.:	Shielding Angle:

REFLECTANCE										
Ceiling	0.8	0.8	0.8	0.7	0.7	0.7	0.5	0.5	0.5	0
Walls	0.7	0.5	0.3	0.7	0.5	0.3	0.7	0.5	0.3	0
Working plane	0.2	0.2	0.2	0.2	0.2	0.2	0.2	0.2	0.2	0
ROOM INDEX	UTILIZATION FACTORS (PERCENT) $k(RI) \times RCR = 5$									
$k = 0.60$	57	45	38	56	45	38	55	44	38	31
0.80	67	55	48	66	55	48	64	54	47	40
1.00	76	64	57	74	64	57	72	65	56	49
1.25	83	72	65	81	72	65	79	70	64	56
1.50	88	78	71	86	77	70	83	75	69	62
2.00	95	86	80	93	85	79	90	83	78	70
2.50	99	91	85	97	90	84	93	87	82	74
3.00	102	95	90	100	94	89	96	91	87	78
4.00	106	101	96	104	99	95	100	96	92	83
5.00	109	104	100	106	102	98	102	98	95	86
ROOM INDEX	UF(total)									Direct
According to DIN EN 13032-2 2004			Suspended				SHRNOM = 1.25			

C Range: 0 - 360DEG
C Interval: 22.5DEG
Test Speed: HIGH
Temperature:25.3DEG
Operators:SAM
Test Date:2025-11-11

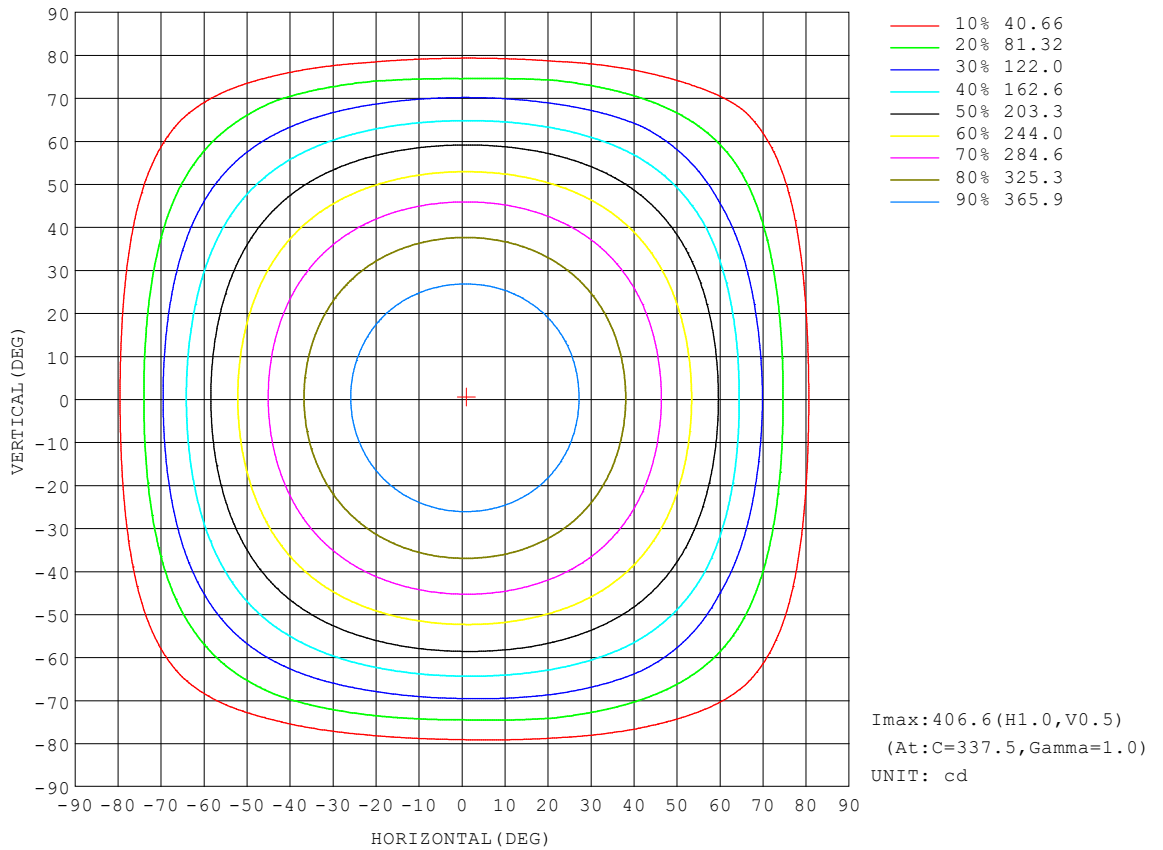
γ Range: 0 - 180DEG
 γ Interval: 1.0DEG
Test System:EVERFINE GO-R5000_V2 SYSTEM V2.0.366
Humidity:56%
Test Distance:2.604m [K=1.0000]
Remarks:

Checker:

Assessor:

ISOCANDELA DIAGRAM

Test:U:230.07V I:0.0407A P:8.4610W PF:0.9032 Freq:50.00Hz Lamp Flux:1213.83x1 lm		
NAME: Sensor Light	TYPE:	WEIGHT:
SPEC.:	DIM.:	SERIAL No.:EDG2511100080L003
MFR.: IQ Group (WuNing) Ltd.	SUR.:	Shielding Angle:



C Range: 0 - 360DEG
 C Interval: 22.5DEG
 Test Speed: HIGH
 Temperature: 25.3DEG
 Operators: SAM
 Test Date: 2025-11-11

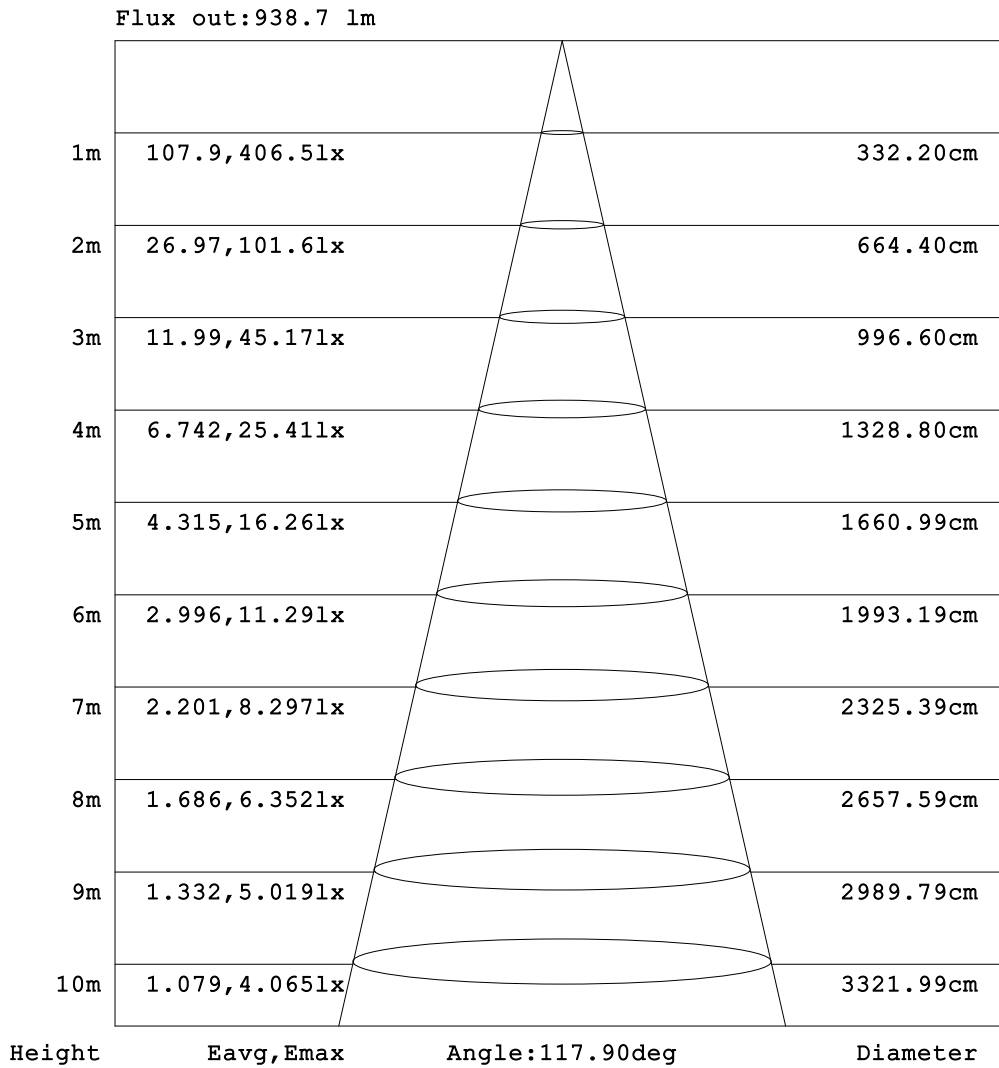
γ Range: 0 - 180DEG
 γ Interval: 1.0DEG
 Test System: EVERFINE GO-R5000_V2 SYSTEM V2.0.366
 Humidity: 56%
 Test Distance: 2.604m [K=1.0000]
 Remarks:

Checker:

Assessor:

AAI Figure

Test:U:230.07V I:0.0407A P:8.4610W PF:0.9032 Freq:50.00Hz Lamp Flux:1213.83x1 lm		
NAME: Sensor Light	TYPE:	WEIGHT:
SPEC.:	DIM.:	SERIAL No.:EDG2511100080L003
MFR.: IQ Group (WuNing) Ltd.	SUR.:	Shielding Angle:



Note: The Curves indicate the illuminated area and the average illumination when the luminaire is at different distance.

C Range: 0 - 360DEG
 C Interval: 22.5DEG
 Test Speed: HIGH
 Temperature: 25.3DEG
 Operators: SAM
 Test Date: 2025-11-11

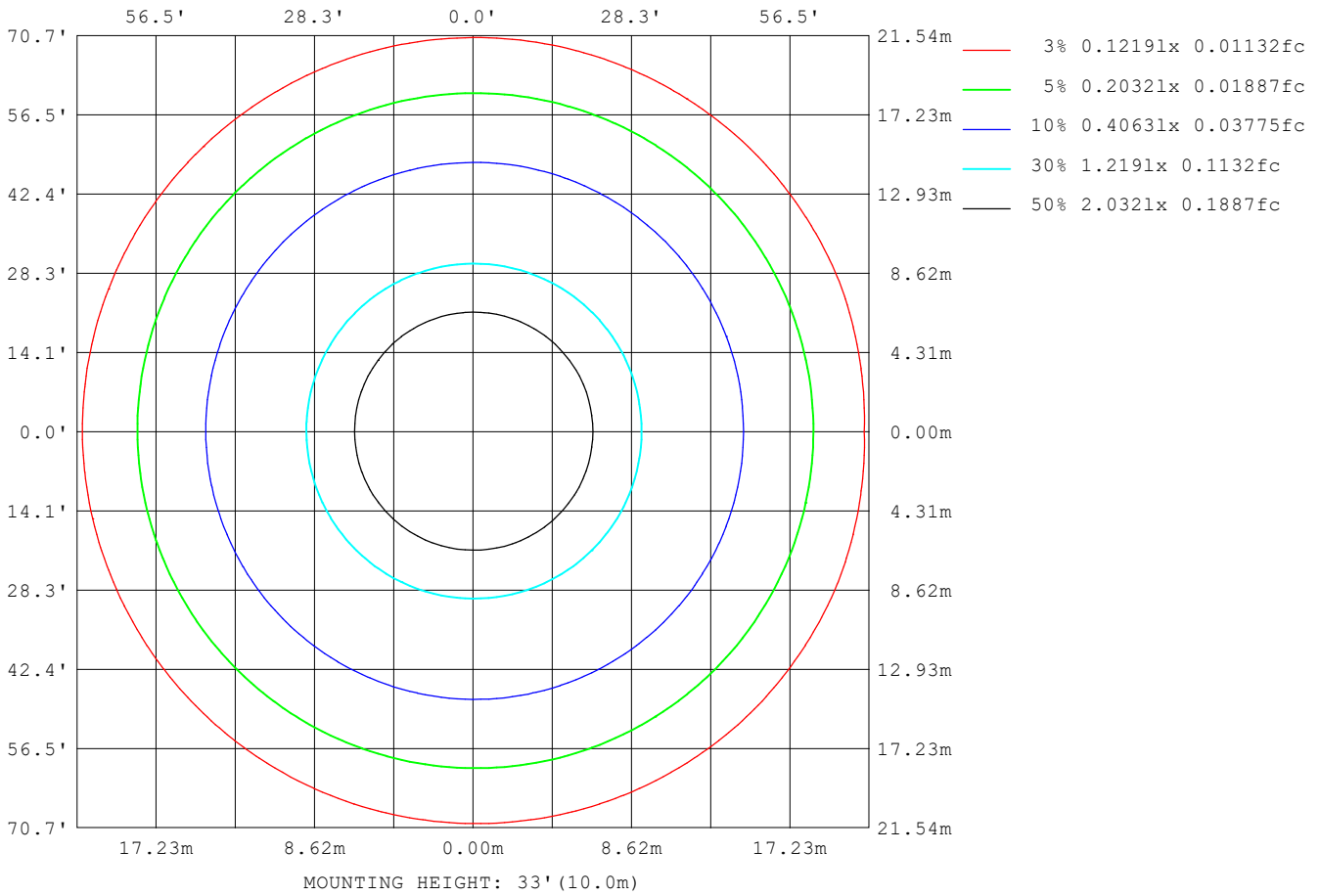
γ Range: 0 - 180DEG
 γ Interval: 1.0DEG
 Test System: EVERFINE GO-R5000_V2 SYSTEM V2.0.366
 Humidity: 56%
 Test Distance: 2.604m [K=1.0000]
 Remarks:

Checker:

Assessor:

ISOLUX DIAGRAM

Test:U:230.07V I:0.0407A P:8.4610W PF:0.9032 Freq:50.00Hz Lamp Flux:1213.83x1 lm		
NAME: Sensor Light	TYPE:	WEIGHT:
SPEC.:	DIM.:	SERIAL No.:EDG2511100080L003
MFR.: IQ Group (WuNing) Ltd.	SUR.:	Shielding Angle:



C Range: 0 - 360DEG
 C Interval: 22.5DEG
 Test Speed: HIGH
 Temperature:25.3DEG
 Operators:SAM
 Test Date:2025-11-11

γ Range: 0 - 180DEG
 γ Interval: 1.0DEG
 Test System:EVERFINE GO-R5000_V2 SYSTEM V2.0.366
 Humidity:56%
 Test Distance:2.604m [K=1.0000]
 Remarks:

Checker:

Assessor:

LED Avg.L Report

Test:U:230.07V I:0.0407A P:8.4610W PF:0.9032 Freq:50.00Hz Lamp Flux:1213.83x1 lm		
NAME: Sensor Light	TYPE:	WEIGHT:
SPEC.:	DIM.:	SERIAL No.:EDG2511100080L003
MFR.: IQ Group (WuNing) Ltd.	SUR.:	Shielding Angle:

AvgL	cd/m2
L_0~180 (65) av	34041
L_0~180 (75) av	27145
L_0~180 (85) av	12730
L_90~270 (65) av	34705
L_90~270 (75) av	26357
L_90~270 (85) av	7765
L_45 (65) av	34851
L_45 (75) av	28927
L_45 (85) av	9289

Standard: GB/T 29293-2012

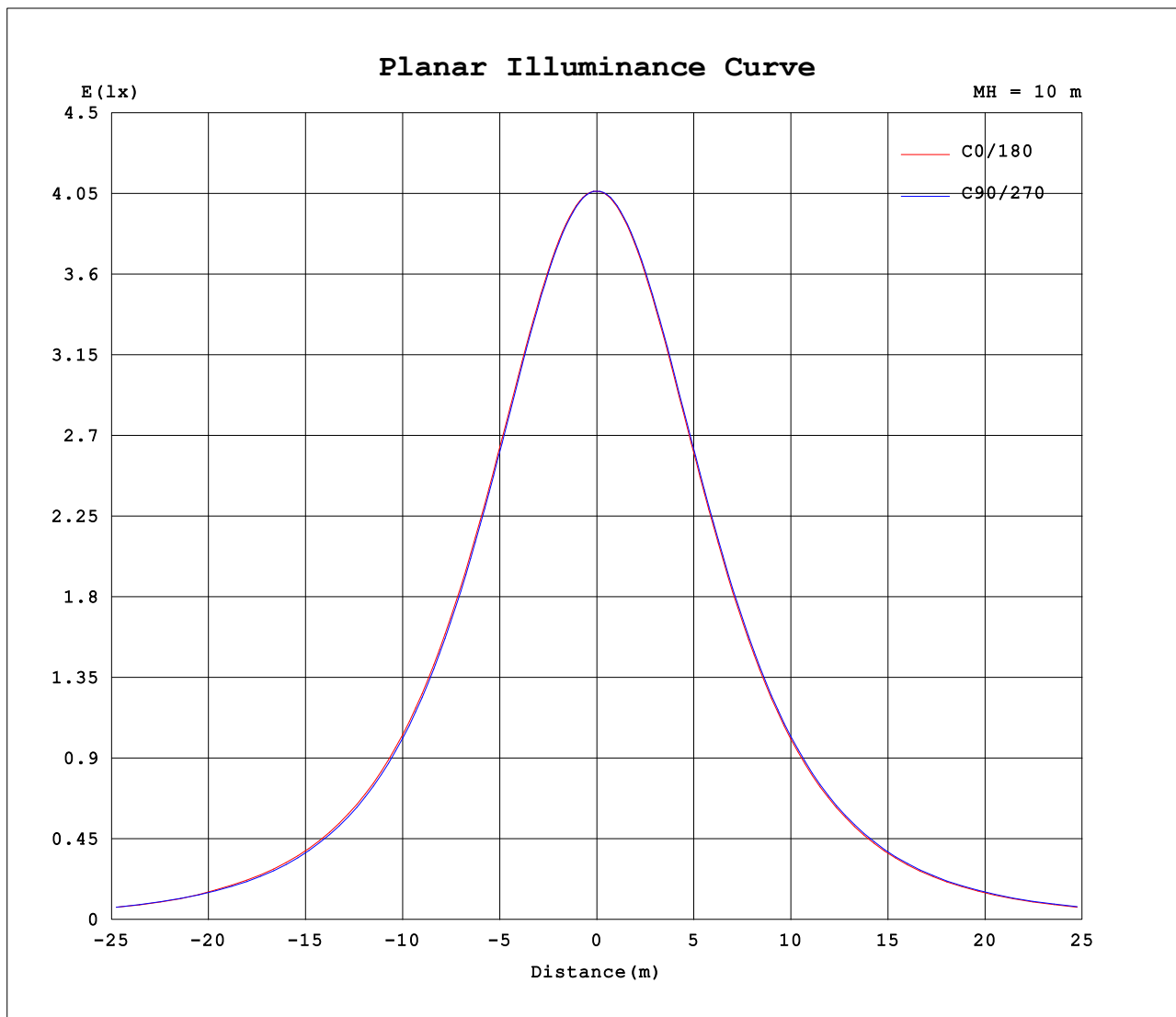
C Range: 0 - 360DEG
 C Interval: 22.5DEG
 Test Speed: HIGH
 Temperature:25.3DEG
 Operators:SAM
 Test Date:2025-11-11

γ Range: 0 - 180DEG
 γ Interval: 1.0DEG
 Test System:EVERFINE GO-R5000_V2 SYSTEM V2.0.366
 Humidity:56%
 Test Distance:2.604m [K=1.0000]
 Remarks:

Checker:

Assessor:

Planar Illuminance Curve



C Range: 0 - 360DEG
 C Interval: 22.5DEG
 Test Speed: HIGH
 Temperature: 25.3DEG
 Operators: SAM
 Test Date: 2025-11-11

γ Range: 0 - 180DEG
 γ Interval: 1.0DEG
 Test System: EVERFINE GO-R5000_V2 SYSTEM V2.0.366
 Humidity: 56%
 Test Distance: 2.604m [K=1.0000]
 Remarks:

Checker:

Assessor:

LUMINOUS DISTRIBUTION INTENSITY DATA

Test:U:230.07V I:0.0407A P:8.4610W PF:0.9032 Freq:50.00Hz Lamp Flux:1213.83x1 lm		
NAME: Sensor Light	TYPE:	WEIGHT:
SPEC.:	DIM.:	SERIAL No.:EDG2511100080L003
MFR.: IQ Group (WuNing) Ltd.	SUR.:	Shielding Angle:

Table--1

UNIT: cd

C (DEG) \ γ (DEG)	0	22.5	45	67.5	90	112.5	135	157.5	180	202.5	225	247.5	270	292.5	315	337.5			
0	406	406	406	406	406	406	406	406	406	406	406	406	406	406	406	406			
5	406	406	405	405	405	405	405	405	405	405	405	405	405	406	406	406			
10	402	402	401	401	401	400	400	400	400	400	401	401	402	402	402	402			
15	395	395	394	394	393	393	392	392	393	393	394	394	395	395	395	395			
20	385	385	384	383	383	382	382	382	382	383	383	384	385	385	385	386			
25	373	372	371	370	369	369	368	368	369	369	370	371	371	372	373	373			
30	357	356	355	354	353	352	352	352	352	353	354	354	355	356	357	357			
35	338	338	337	335	334	333	332	332	333	334	335	335	336	337	338	338			
40	317	316	315	313	311	310	310	310	310	311	312	313	314	315	316	317			
45	292	291	290	288	286	285	284	284	285	286	287	288	289	290	291	292			
50	264	264	262	260	258	257	256	256	257	258	259	260	261	263	264	265			
55	234	233	232	229	227	226	225	225	226	227	228	229	231	232	233	234			
60	201	200	199	196	194	192	191	191	192	193	195	196	197	199	200	201			
65	157	163	163	160	158	156	155	155	156	157	159	160	161	163	164	164			
70	122	117	125	123	119	117	117	117	118	120	121	122	123	124	126	118			
75	78.5	80.3	81.8	83.8	75.7	76.8	78.7	74.6	74.3	75.5	82.6	81.9	72.6	85.0	82.6	82.7			
80	44.9	44.4	39.1	37.5	36.2	34.8	32.0	37.3	37.9	38.8	33.3	35.4	36.8	36.7	36.4	45.2			
85	14.9	14.6	9.91	9.66	5.73	7.49	6.99	8.13	9.24	8.33	7.10	8.30	8.99	9.25	11.2	15.4			
90	0.40	0.33	0.23	0.13	0.07	0.13	0.16	0.16	0.17	0.16	0.14	0.11	0.07	0.13	0.23	0.32			
95	0.23	0.27	0.21	0.13	0.08	0.10	0.10	0.09	0.05	0.06	0.07	0.08	0.06	0.11	0.18	0.25			
100	0.26	0.30	0.22	0.14	0.10	0.11	0.11	0.10	0.06	0.06	0.07	0.07	0.06	0.09	0.18	0.25			
105	0.26	0.28	0.22	0.15	0.12	0.13	0.13	0.12	0.07	0.07	0.08	0.08	0.07	0.10	0.18	0.25			
110	0.26	0.28	0.25	0.17	0.15	0.16	0.16	0.15	0.10	0.10	0.10	0.10	0.10	0.12	0.19	0.24			
115	0.28	0.29	0.29	0.19	0.19	0.19	0.19	0.19	0.12	0.13	0.13	0.14	0.13	0.13	0.22	0.24			
120	0.33	0.31	0.32	0.22	0.23	0.23	0.23	0.23	0.16	0.16	0.16	0.17	0.16	0.16	0.25	0.25			
125	0.36	0.33	0.33	0.26	0.27	0.26	0.27	0.27	0.19	0.19	0.20	0.20	0.19	0.19	0.26	0.28			
130	0.38	0.34	0.32	0.28	0.30	0.29	0.30	0.29	0.23	0.23	0.23	0.23	0.23	0.23	0.27	0.30			
135	0.38	0.34	0.30	0.30	0.32	0.31	0.32	0.31	0.27	0.27	0.29	0.28	0.28	0.27	0.28	0.32			
140	0.34	0.31	0.30	0.30	0.31	0.31	0.31	0.31	0.31	0.32	0.32	0.32	0.32	0.32	0.32	0.32			
145	0.30	0.30	0.31	0.30	0.31	0.30	0.31	0.31	0.36	0.36	0.36	0.36	0.37	0.36	0.36	0.35			
150	0.32	0.30	0.31	0.31	0.32	0.31	0.31	0.31	0.40	0.40	0.40	0.40	0.40	0.40	0.40	0.39			
155	0.33	0.32	0.32	0.32	0.33	0.32	0.33	0.33	0.42	0.42	0.42	0.42	0.42	0.42	0.42	0.42			
160	0.34	0.34	0.34	0.34	0.34	0.34	0.34	0.34	0.43	0.43	0.43	0.43	0.44	0.43	0.44	0.43			
165	0.37	0.37	0.37	0.37	0.37	0.37	0.37	0.37	0.45	0.45	0.45	0.45	0.46	0.45	0.45	0.46			
170	0.39	0.39	0.39	0.38	0.38	0.39	0.39	0.39	0.48	0.48	0.48	0.48	0.48	0.48	0.48	0.48			
175	0.44	0.44	0.44	0.44	0.44	0.44	0.44	0.44	0.48	0.48	0.48	0.48	0.48	0.48	0.48	0.48			
180	0.46	0.46	0.46	0.46	0.46	0.46	0.46	0.46	0.46	0.46	0.46	0.46	0.46	0.46	0.46	0.46			

C Range: 0 - 360DEG
 C Interval: 22.5DEG
 Test Speed: HIGH
 Temperature:25.3DEG
 Operators:SAM
 Test Date:2025-11-11

γ Range: 0 - 180DEG
 γ Interval: 1.0DEG
 Test System:EVERFINE GO-R5000_V2 SYSTEM V2.0.366
 Humidity:56%
 Test Distance:2.604m [K=1.0000]
 Remarks:

Checker:

Assessor: