

PRODUCT KEY: 84100 (x1) - 84101 (x2)

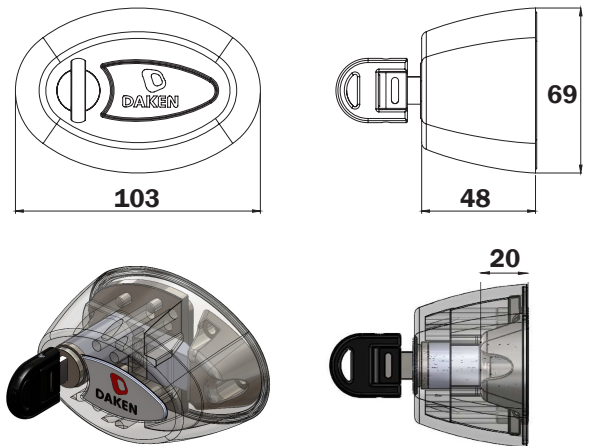
ATTENTION!
PLEASE WRITE HERE THE KEY CODE AND KEEP IT IN A SAFE PLACE

NOVAL
VAN LOCK

Daken s.r.l.
Zona Industriale Jesce
75100 - Matera (MT)
Tel. 0835/292811 Fax. 0835/292834
E-mail: info@daken.it
Web: www.daken.it



Dimensions:



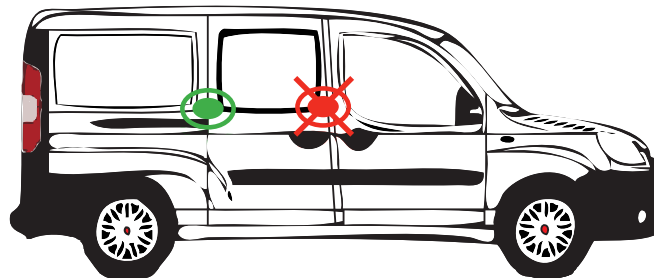
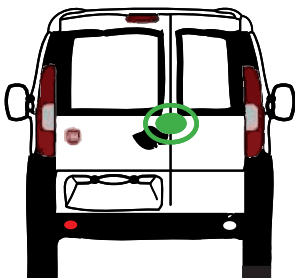
How it works:

The lock is composed of an external shell and a locking bracket. When the key turns, it moves the locking lever into the bracket compartment allowing the opening/closing of the device.

Opening: When the key is inserted and turned clockwise, the lever is released from the locking bracket.

Closing: When the key is turned counterclockwise, the lever moves into the locking bracket compartment closing the device; therefore, in order to lock the cargo van it is sufficient to close the door.

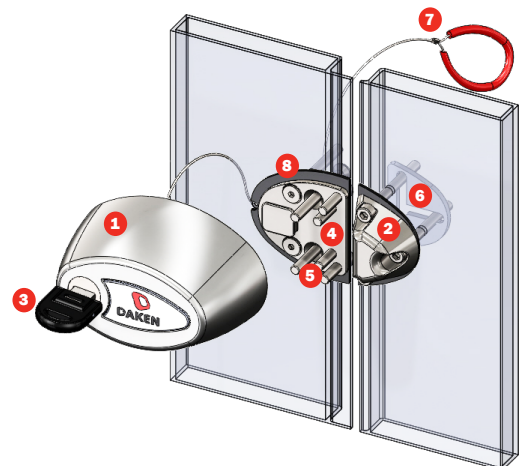
Where you can install it: The device can be installed both on the rear and on the side door of the van.



Caution: do not install the device on the forepart of the side door.

Installation kit:

- | | |
|--|--|
| 1 EXTERNAL SHELL IN STAINLESS STEEL AISI 304 | 6 LOCKING BRACKET COUNTERPLATE; |
| 2 LOCKING BRACKET | 7 CABLE-STOPPER AND CASE FOR EMERGENCY OPENING SYSTEM |
| 3 KEYS; | 8 RUBBER PROTECTION FOR THE VAN BODY; |
| 4 FIXING PLATE WITH QUICK-COUPLING SYSTEM | 9 PLASTIC SHIMS; |
| 5 FIXING KIT :
3 LONG M5 CYLINDER HEAD SCREWS
4 LONG M5 COUNTERSUNK SCREWS
4 SHORT M5 CYLINDER HEAD SCREWS
11 LOW PROFILE LOCKNUTS
11 KNURLED WASHERS
4 WASHERS
7 M4 RIVETS
7 SHORT M4 COUNTERSUNK SCREWS | 10 DRILL TEMPLATE; |
| | 11 INSTRUCTIONS; |



MOUNTING INSTRUCTIONS



- Before installing the device, check that the doors are perfectly aligned;
- Prefer smooth surfaces to areas where the van body is irregular.
- If necessary, use the plastic shims to level and/or align the surfaces.

STEP 1

Use the adhesive drill template to mark the holes needed to install the device, using the axes as a reference point.

- **3 holes ø 5** **A B C** for the locking bracket;
- **2 holes ø 5** **L M** for the fixing plate with fast-coupling system;
- **2 holes ø 5** **D E** + **F G** to fix the external shell to the van door;
- **1 hole ø 4** **N** for the emergency cable;
- **2 holes ø 5** **H I** (discretionary) for the fixing plate with fast-coupling system or to fix the external shell to the van door.

Fixing parts needed for the holes:

- A B C**: M5 long hexagon head cap screw, fixed from the outside;
- D E F G**: M5 short hexagon head cap screw, fixed from the inside;
- H I**: M5 long hexagon socket countersunk head cap screw, fixed from the outside or M5 long hexagon head cap screw, fixed from the inside;
- L M**: M5 long hexagon socket countersunk head cap screw, fixed from the outside.

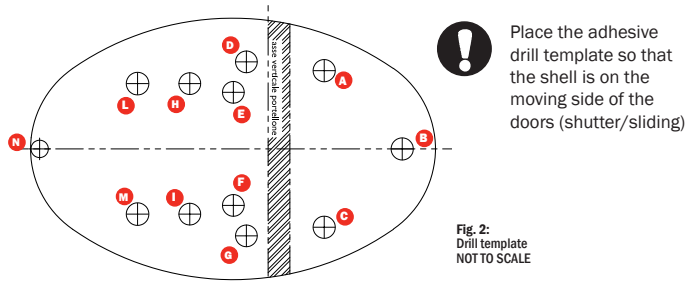


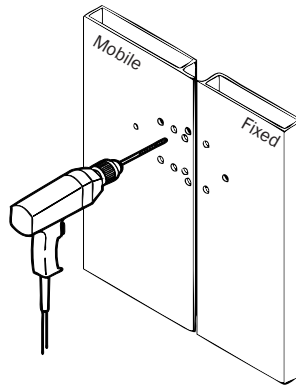
Fig. 2:
Drill template
NOT TO SCALE

STEP 2

Drill

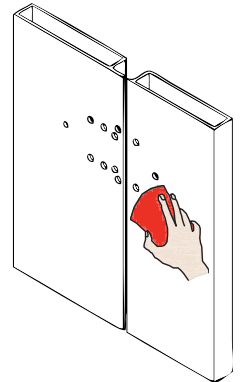


Before drilling, check that the drilling template is in the right position.



STEP 3

After drilling, clean the door surface and remove any imperfection.



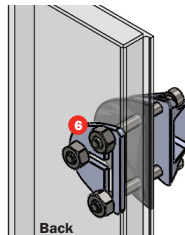
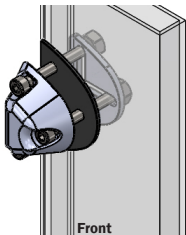
Better treat the drilled surface with spray paint

STEP 4

Place the rubber protection in correspondence to the holes and fix the locking bracket, as shown in the picture below.

Fixing parts needed:

- 3 M5 long hexagon head cap screws;
- 3 M5 locknuts;
- Counterplate **G**.



- Tighten up only after aligning the locking bracket with the external shell has been checked;
- Use the plastic shims in the kit in case the van doors surface is not perfectly flat.

STEP 5

Place the rubber protection in correspondence to the holes, then fix the fast-coupling system plate, as shown in the picture below. You can use 2 or 4 screws to fix the plate.

Fixing parts needed:

- 2 or 4 M5 long hexagon socket countersunk head cap screws;
- 2 or 4 locknuts;
- 2 or 4 washers.

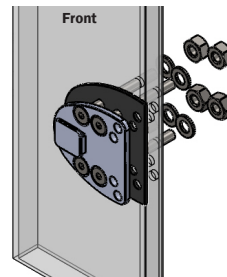


Fig. 3:
4 screws assembly

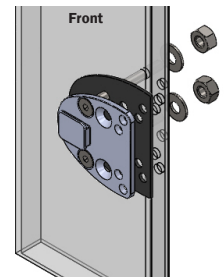


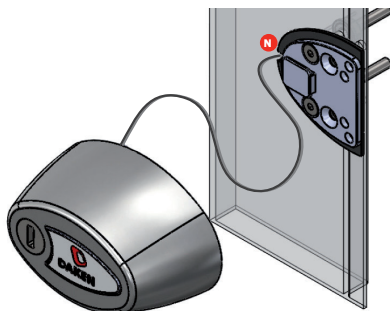
Fig. 4:
2 screws assembly

Step 4 and 5: in the fixing kit you will find the rivets suitable for van doors with sheet thickness over 2,5mm.

For this kind of installation, you need a rivet plier. Avoid installation on van doors with sheet thickness over 2,5mm.

STEP 6

Match the external shell with the plate, but first don't forget to let the emergency cable into the hole **N**.

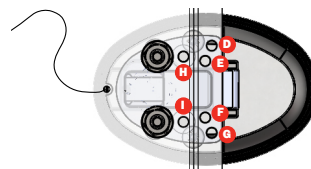


To match the external shell with the fast-coupling system plate, insert the plate coupling into the cavity of the shell, then make it run along the horizontal axis, until its limit.

In this way the external shell will be stable and it will be easier to fix the device to the van door through the holes **H+I** and **E+F** or **D+G**.

Fixing kit parts needed:

- 4 short M5 cylinder head screws
- 2 long M5 cylinder head screws
- 6 locknuts
- 6 knurled washers



Check the right functioning of the emergency cable

STEP 7

Check the steadiness of the device and lubricate the lever and the locking bracket compartment; then you can start using your NOVAL!



- Lubricate the lock at least every 3 months with a specific product. A silicone lubricant (according to the law VW G052 778 A2) is recommended.
- When washing the vehicle, avoid to point the water jet directly on the device.