



300 kg DUMPER

- Capable of transporting up to 300 kg of solid or bulk material
- Air-filled tyres and four wheel drive for maximum traction
- Quick response, easy manoeuvrable
- The large tipping container is perfect for hauling earth, gravel, stone, rubble, bricks and anything else you wish to transport
- The lever located on the handlebar controls the direction of travel
- Transmission – 3 forward gears and 1 reverse gear
- Tipping container – 912 x 650 x 560 mm
- Large, air-filled wheels for easy operation



OPTIONAL ACCESSORIES

SNOW PLOW
100 x 50 cm



Article number: 7908800001
Barcode: 4046664042563



Large tipping container

3 x forward &
1 x reverse gear

easy manoeuvrable

196 cm³
5,6 PS
4-stroke motor

Solid design

4x4 drive

Large,
air-filled wheels

LOADING CAPACITY
MAX.



300 kg

SPECIFICATIONS - ENGINE

Model	Single-cylinder; 4 stroke petrol engine
Input max.	5.6 HP
Displacement	196 cc

SPECIFICATIONS

Dimensions L x W x H	1380 x 760 x 1000 mm
Dimension container	910 x 650 x 575 mm
Loading capacity max.	300 kg
Tipping	hand
Transmission	gear
Forward speed max.	2.5 / 4.8 / 6.4 km/h
Reverse speed max.	2 km/h

LOGISTICAL DATA

Weight net / gross	143 / 167 kg
Packaging dimensions	1150 x 735 x 850 mm
Article number	5908802903
Barcode	4046664037989
20 Container	30 pcs
40 Container	64 pcs
40 HQ Container	96 pcs



EXAMPLES OF USE

Garden



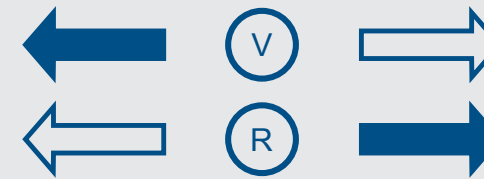
Wood



Construction site



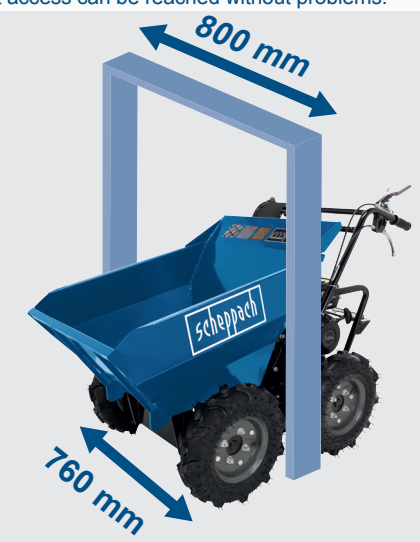
Three forwards gears 2.5 - 4.8 - 6.4 km/h
and one reverse gear 2 km/h.



The Dumper 3000 is ideal for loose
and solid transported materials.



Thanks to the narrow clearance width of 760 mm, even areas
with difficult access can be reached without problems.



PRODUCT DETAILS

Loading capacity max.



300 kg

4x4 drive



Large tipping container



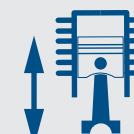
910 x 650 x 575 mm

Compact design



760 mm

196 cm³



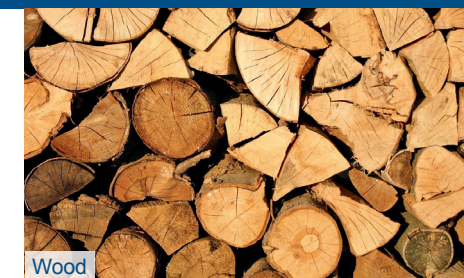
Powerful 5,6 PS motor



SUITABLE FOR DIFFERENT MATERIALS



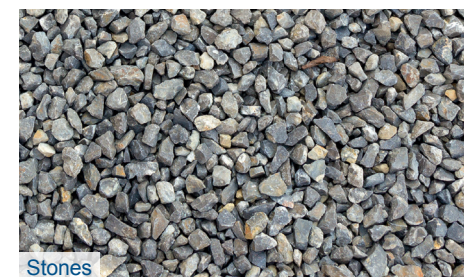
Gravel



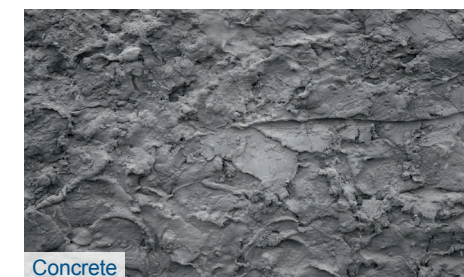
Wood



Soil



Stones



Concrete



Bagged goods