

3IN1

- ✓ Hammer drilling
- ✓ Drilling
- ✓ Screwing

PLUS X AWARD

2024 | Achieved for:

High Quality

Design

Ease of Use

Functionality

www.plusxaward.com

Part of the battery platform
20V IXES
ONE BATTERY FOR ALL DEVICES

CORDLESS HAMMER DRILL

- Powerful cordless hammer drill for drilling, hammer drilling and screwing – ideal for the workshop, house or construction site
- Cordless work with the Scheppach IXES 20 Volt series – all batteries and chargers belonging to this system series can be combined with the cordless hammer drill
- Powerful 1.3 J impact, up to 6000 bpm
- Attachable quick-release chuck with SDS-Plus mount
- The SDS-Plus chuck allows tool-free switching of drills
- Central selection switch for quick changing between functions without the need for tools
- Clockwise and anti-clockwise operation to allow easy insertion and removal of screws
- High-quality, durable metal gear box
- Ergonomic and compact design with soft-grip handle ensures comfortable operation
- Integrated LED work light ensures perfect illumination of the working environment
- Battery and charger available separately
- Includes convenient transport case, 1 quick-release chuck, 8 bits, 3 SDS-Plus twist drills (6, 8, 10 mm), 3 HSS twist drills (5, 6, 8 mm), 1 magnetic bit holder, 50 g drill grease

Attachable quick-release chuck

SDS-Plus chuck

Metal gear box

Selector switch

LED

Ergonomic design with soft-grip handle

INCLUDED

Battery and charger available separately

SPECIFICATIONS

Dimensions L x W x H	244 x 228 x 74 mm
Motor type	Brush motor
Impact force	1.3 J
Impact rating	6000 bpm
Max. idle speed	0 – 1100 rpm
Max. drill hole diameter	10 mm (concrete and stone), 8 mm (metal), 16 mm (timber)
Battery voltage	20 V

LOGISTICAL DATA

Weight net / gross	2.9 / 3.5 kg
Packaging dimensions	365 x 125 x 300 mm
Article number	5909249900
Barcode	4046664226789
20 Container	1660 pcs
40 Container	3500 pcs
40 HQ Container	4100 pcs



EXAMPLES OF USE
SUITABLE FOR

Workshop



Construction site

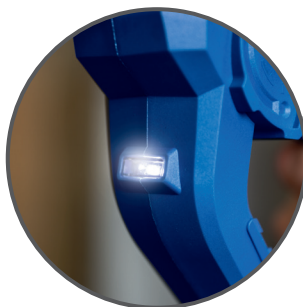


House



Selector switch

for quick switching between functions without the need for tools



LED work light

ensures perfect illumination even in poor lighting conditions



Attachable quick-release chuck with SDS-Plus mount.

Speed
0 – 1100 rpm

1.3 J impact
6000 bpm

SDS-Plus

20 V

LED work light

Attachable quick-release chuck

ONE CASE – MANY USES

- 1x quick-release chuck
- 8x bits
- 3x SDS-Plus twist drills (6, 8, 10 mm)
- 3x HSS twist drills (5, 6, 8 mm)
- 1x magnetic bit holder
- 1x cordless hammer drill
- 1x 50 g drill grease
- 1x transport case provides space for 2 batteries and 1 battery charger (Battery and charger available separately)



Tool-free drill bit replacement, thanks to SDS-Plus chuck



With clockwise and anti-clockwise function.

UNIVERSAL USE



HAMMER DRILLING



DRILLING



SCREWING