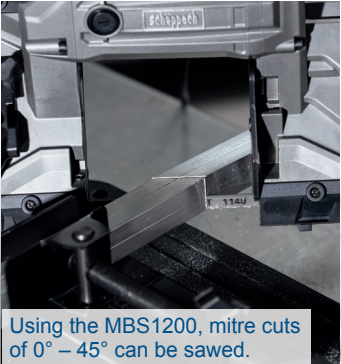


METAL BAND SAW

- Powerful 1100 W motor with consistent power
- Suitable for both stationary and flexible use with both hands
- Can be used from PVC to stainless steel with material thicknesses up to 127 x 127 mm
- Two insulated handles, one of which is adjustable, so that the saw always lies comfortably in the hand
- Variable cutting speeds from 0 to 2.4 m/s for different materials
- Light and handy for universal use
- Heavy-duty work table for reliable stability with new fixing mechanism
- Includes second saw blade and work light (MBS1200xts)



- ✓ Hand-guided
- ✓ Stationary



VARIABLE CUTTING SPEEDS FOR DIFFERENT MATERIALS



PRODUCT DETAILS

Saw band length 1140 mm	Cutting-Ø max. max. 80 mm
LED 	Powerful 1100 W motor
Cutting height / width: 90° / 90° 127 / 127 mm	Cutting height / width: 45° / 45° 127 / 40 mm
Variable saw band speed 0 – 2,4 m/s	2 in 1 Hand-guided Stationary

SPECIFICATIONS	
Dimensions L x W x H	560 x 290 x 570 mm
Swivel range	0° – 45°
Saw blade length	1140 mm
Cutting speed	0 – 2,4 m/s
Cutting-Ø max.	80 mm
Cutting height / width: 90° / 90°	127 / 127 mm
Cutting height / width: 45° / 45°	127 / 40 mm
Motor	230 V~ / 50 Hz
Engine power	1100 W

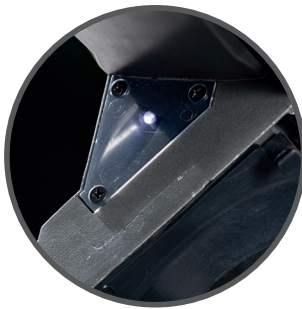
LOGISTICAL DATA		
	MBS1200xt	MBS1200xts
Weight net / gross	11,8 / 13,5 kg	
Packaging dimensions	555 x 290 x 360 mm	
Article number	5901511901	5901511904
Barcode	4046664151906	4046664151913
20 Container	440 pcs	
40 Container	910 pcs	
40 HQ Container	1067 pcs	



Adjustable handle allows perfect adaptation to the application



Adjustable speed allows work to suit the material



LED work light ensures perfect visibility even in poor lighting conditions



Guides with ball bearings ensure smooth running of the blade