

2IN1

- ✓ Mortar mixer
- ✓ Paint mixer

PAINT AND MORTAR STIRRER
INCLUDING 2ND PADDLE

- Powerful 1200 Watt motor
- Variable speed 0 – 700 rpm
- Sturdy M14 thread
- Quick and easy paddle changes
- Ideal for mixing mortar, roughcast, paint, etc.
- Soft-grip ergonomic D-handle for a comfortable and firm grasp
- Included paint and mortar mixer

OPTIONAL ACCESSORY

MIXING PADDLE
REPLACEMENT



Article number: 3907801009
Barcode: 4046664042372

Ergonomic handle

M14 Thread

INCLUDED

SPECIFICATIONS

Dimensions L x W x H	315 x 200 x 875 mm
Motor	220 – 240 V~
Power	1200 W
No load speed	0 – 700 min ⁻¹
Shaft length	K2: 580 mm; K5: 590 mm
Tool connection thread	M14

LOGISTICAL DATA

Weight net / gross	5,7 / 6,6 kg
Packaging dimensions	340 x 230 x 290 mm
Article number	5907801901
Barcode	4046664042198
20 Container	1050 pcs
40 Container	2150 pcs
40 HQ Container	2550 pcs



EXAMPLES OF USE

Interior fittings



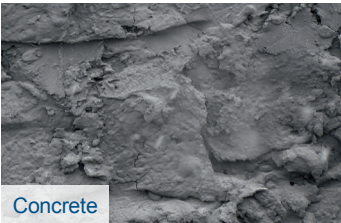
Exterior-
renovation



Garden



Construction site



Concrete



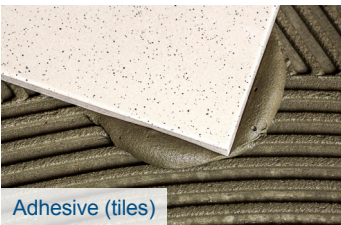
Plaster



Mortar



Roughcast



Adhesive (tiles)



Paint

PRODUCT-DETAILS

1200 W



230 V connection



Variable speed
0 – 700 U/min



M14 Thread



Mortar mixing paddle



580 mm

Paint mixing paddle



590 mm

Thanks to its comprehensive accessories, the PM1200 is able to process paint, mortar and concrete.



Ergonomic handle ensures fatigue-free working

Adjustable speed
ensures mixing without
splashing

