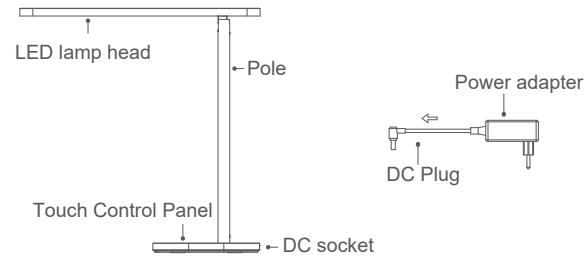


Table Lamp Sparrow

## Assemble

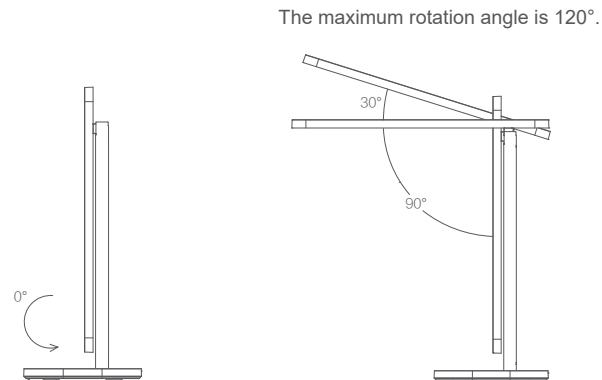
**Warning:**  
Do not connect to power until assembly is complete.

### Product Accessories



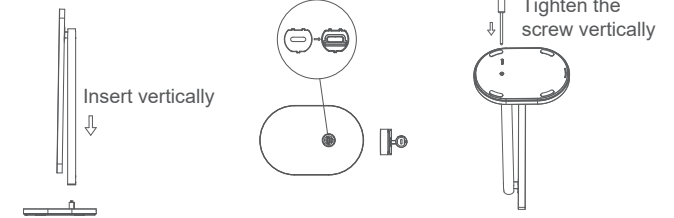
Packing List: User's manual 1PC, Power adapter 1PC, Lamp base 1PC, Lamp holder & Lamp Pole 1 PC, Screw 1PC.

### Rotation Angle Diagram

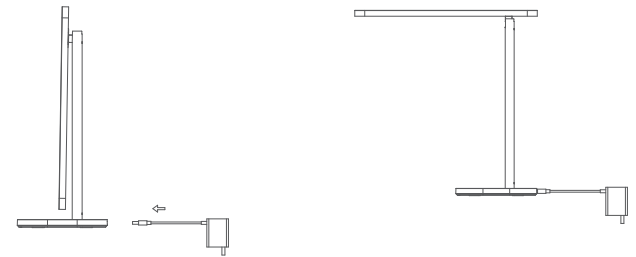


## Assemble Steps

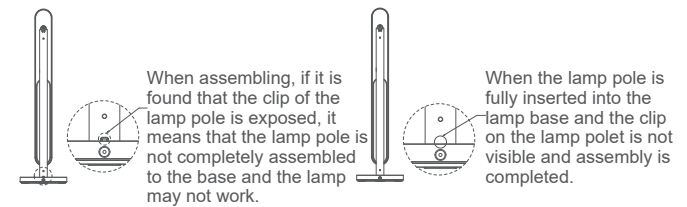
1. Insert the light pole vertically the base of the lamp.
2. Pay attention to the alignment of the port.
3. Tighten a screw with a screwdriver.



4. Connect to the power adapter.
5. Plug the adapter into a power outlet and it's ready to use.



**Note:** The lamp pole should be fully inserted into the lamp base as shown in the following figure.



## Instructions for use



Function description: Touch control

Icon	Function	Function description
	ON/OFF	Short touch to turn on/off the light. The indicator light keeps on by default. Hold touch for 5 seconds to switch the indicator light on and off with the lamp.
	Color Temperature switch button	Touch this button to change color temperature of table lamp, there are warm light, neutral light and cool light
	Delay light off Mode	Touch this button to turn on the 60-second delay light -off mode (the indicator light is on, the brightness is reduced to 20% or remains below 20%, the light will be turned off after 60 seconds).
	Backlight	Touch this button, the backlight and indicator light are turned on. Touch this button again, the backlight and indicator light are turned off, and the lamp restores the original brightness.
	Touch Dimming	Touch the sliding bar to adjust the brightness.

## Features

1. Main functions: LED lighting technology, touch dimming.
2. Health and safety light source, flicker free, RG0 level blue light hazard.
3. The unique patented honeycomb anti-glare design provides.
4. Color temperature: 3000K/4000K/5000K.

## For luminaire

### With Power Adapter:

Product code: 523003011600  
 Product Description: LED Sparrow-E 15W-DIM-830/840/850  
 Model name: LED HTL405-15W-Dim  
 Rated Voltage: 220-240V~ 50/60 Hz  
 Rated Wattage: 15W  
 Rated Current: 0.075A  
 Power Factor: 0.8  
 CCT: 3000K/ 4000K/ 5000K  
 CRI: 80  
 Safety Class: Class II  
 Dimension: 405×120×410mm


### Without Power Adapter:

Model name: LED HTL405-15W-Dim-1  
 Rated Voltage: 12V DC  
 Rated Wattage: 12W  
 Safety Class: Class III

### Light Source


Product Code	Product Description	N	Light source code	QR Code	Energy Label
523003011600	LED Sparrow-E 15W-DIM-830/840/850	1	LS079001132		
			LS079000215		

## Safety Warning

 In order to prevent accidents such as lamp damage, falling, electric shock, fire and so on, please install and use it in strict accordance with the instructions, and do not replace parts by non-professional persons.

- Don't employ the power supply exceeding rated voltage range (rated voltage: AC 220-240V±10%, frequency: 50/60Hz). (Long-time use of power supply exceeding rated voltage range may damage lamps).
- Do not use on slopes greater than 6°.
- Don't install lamp above the high temperature objects or in moisture area. (The lamp cannot be installed above oven, gas and exhaust funnel, etc., in order to avoid damage).
- Inspection and maintenance of lamps should be performed by professionals. Operation by non-professionals may cause danger.
- Immediately cut off power when abnormal conditions of lamps occur, and contact with the sales store. (It's necessary to show the corresponding model when maintaining, and refer to the label attached to the lamp).
- If the external flexible cable or cord of this lamp is damaged, it shall be exclusively replaced by the manufacturer or his service agent or a similar qualified person in order to avoid a hazard.
- Note: If the lamp does not work after connecting the power, please check whether the installation and wiring of the lamp are correct, and whether the power switch is turned on.
- The light source of the lamp is not replaceable. When it needs replacement (e.g. the light source exceeds its durability), the whole luminaire should be replaced.
- Tip: The surface will generate a certain amount of heat when the lamp is working, this is a normal phenomenon. The lamp has been strictly tested before leaving the factory, please use it with confidence.

## Care and Maintenance

 Warning: Before servicing and maintaining the lamp, the power must be cut off to prevent electric shock.

In order to use this product safely and efficiently, please clean and inspect it regularly (once every six months). When cleaning the lamp, please cut off the power, use a soft wet cloth and then wipe it with a dry cloth. Do not clean with reagents, otherwise it will cause discoloration or damage to the lamp.

Note: the same product model appearance may be different, but the instructions for use the same (the appearance of the lamp body in kind shall prevail).



Opplé Lighting B.V.  
Meerenakkerweg 1-07  
5652 AR Eindhoven  
The Netherlands  
service@opple.com  
www.opple.com

Opplé Lighting Electronic (Zhongshan) Co., Ltd.  
Building A, No. 275 Dongan Bei Road, Haizhou District,  
Guzhen Town, Zhongshan City, Guangdong Province,  
P.R. China