

LED Wall Mounted EcoMax

Model	CCT	kg	
LED WM E2 R275-22W-BLE2	3000K / 4000K	0.76kg	
LED WM E2 R275-22W-BLE2-EM3	3000K / 4000K	0.86kg	

Model	Ø(mm)	H(mm)	Rated Voltage (V~)	Frequency(Hz)	Power Factor	Current(A)	Rated Power (W)
LED WM E2 R275-22W-BLE2	275	71	220-240	50/60	0.92	0.12	22
LED WM E2 R275-22W-BLE2-EM3	275	71	220-240	50/60	0.92	0.12	22

Light Source

Product Code	Product Description	N	Energy Label	Light source code	QR Code
715000008700	LEDWall-Mounted-E2 Rd275-22W-BLE2	1		LS066002215	
715000008800	LEDWall-Mounted-E2 Rd275-22W-BLE2-EM3				

Mounting

1

2

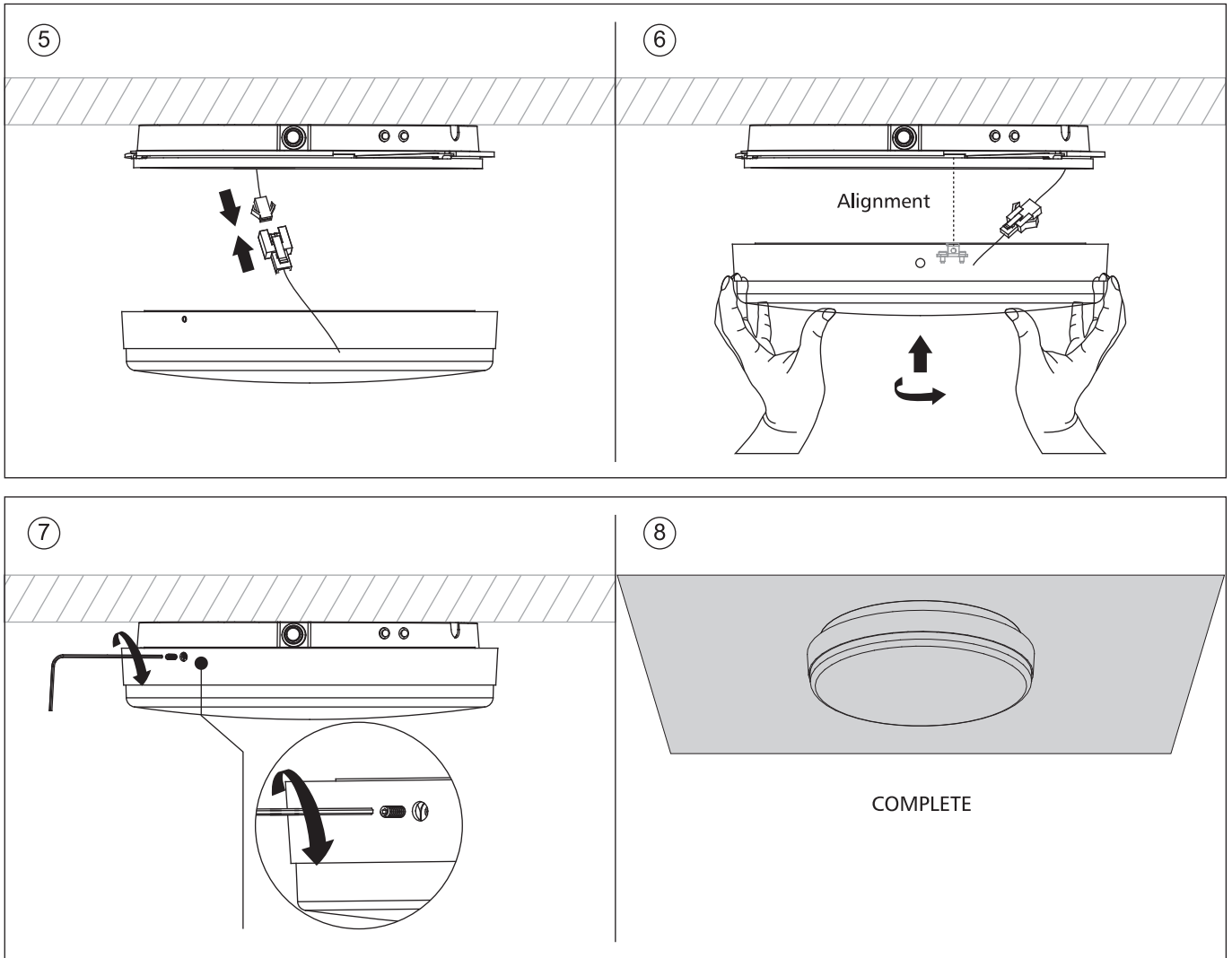
3

4 L' is only required for emergency versions

- L' Switched
- L Unswitched
- N Neutral

CCT changeable

WW NW



Caution: Any operation on LED module is forbidden while power-on.

Achtung: In betrieb ist keine Arbeit am LED-Modul erlaubt.

Zur Vermeidung von Risiken müssen defekte Leitungen ausschließlich vom Hersteller, Inverkehrbringer oder Fachmann ausgetauscht werden.



If the external flexible cable or cord of this luminaire is damaged, it shall be exclusively replaced by the manufacturer or his service agent or a similar qualified person in order to avoid a hazard.

Wenn das externe flexible Kabel oder die Leitung dieser Leuchte beschädigt ist, darf es ausschließlich vom Hersteller oder dem Kundendienst oder einer ähnlich qualifizierten Person ersetzt werden, um Gefahren zu vermeiden.

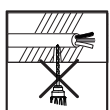
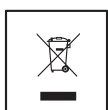
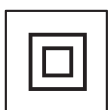
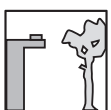


For non-user replaceable light sources: The light source contained in this luminaire shall only be replaced by the manufacturer or his service agent or a similar qualified person.

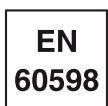
Für nicht vom Benutzer austauschbare Lichtquellen: Die in dieser Leuchte enthaltene Lichtquelle darf nur vom Hersteller oder seinem Servicevertreter oder einer ähnlich qualifizierten Person ausgetauscht werden.



For use in environments where normal non-conductive/conductive dust accumulation may be expected, not for use in environments with expected high/unusual dust accumulation.



Bluetooth Operating frequency: 2402-2480MHz
Bluetooth Max. Transmission Power: <20dBm.



Data subject to change
Les données sont sujettes à modifications
Änderungen vorbehalten

Oppla Lighting Electronic (Zhongshan) Co.,Ltd.
Building A, No.275 Dongan Bei Road, Haizhou District,
Guzhen Town, Zhongshan City, Guangdong Province, P.R.China

Oppla Lighting B.V.
Meerenakkerweg 1-07
5652 AR Eindhoven
The Netherlands
service@oppla.com
www.oppla.com

Emergency versions

RECOMMENDED ROUTINE TEST PROCEDURE

The following test is designed to ensure the continued protection of your premises and occupants. Because of the possibility of a failure of the normal lighting supply occurring shortly after a period of testing, all tests should whenever possible, be undertaken at times of least risk, e.g. during daylight hours.

ONCE A DAY	ONCE A MONTH	ONCE A YEAR
Visual inspection of battery charge LED.	Each unit should be energized from its battery for about 15 minutes by simulation of a failure of the normal lighting supply to ensure the LED's operate in the emergency condition.	Each unit should be energized from its battery for the full rated duration. Inspect the LED's and if any of them have failed the whole unit will need to be replaced. The LED's will probably continue to operate for approximately 10 years but batteries will require replacement every five years.

SPECIFICATION

1. Working temperature: 0°C - 25°C
2. Supply: AC220-240V, 50/60Hz, 0.04A, PF=0.7
3. Replaceable fuse: 250V, 1A
4. IP Rating: IP54, suitable for indoor use or outdoor use
5. Battery: rechargeable Li-ion battery, 6.4V 1500mAh
6. Emergency duration: 3 hours
7. Emergency mode: Lamp intensity after 3h: >90% of max value in emergency mode
8. Color rendering index: >80 for all mode.


RED Operating frequency: 5.8G±75MHz RED Max. Transmission Power: <2mW.

RADIO FREQUENCY INTERFACE REQUIREMENTS – RELATED TO EUROPEAN INSTALLATION

Note:

This equipment has been tested and found to comply with the limits for a EN 300 440 v2.1.1 receiver Category 3. These limits are designed to provide reasonable protection against harmful interference in a residential installation. When placed in the vicinity of other device(s) radiating in the 5.8GHz ISM band this device may inadvertently trigger on. Please take appropriate measure to mitigate this eventuality.

WARNING

1. L terminal should be permanently connected to the supply, otherwise the battery cannot be charged and the product will be unable to change to emergency mode.
2. L' can be disconnected if maintained function is unexpected.
3. The input cable should be H05RN-F 2x1.0mm², or having at least equivalent characteristic.
4. If the rated duration of emergency mode is no longer meet after few years, please contact our service agent to replace the battery or LED module.
5. The fuse, light source and battery contained in this luminaires shall only be replaced by a certified electrician or our service agent.
Please contact us if you have any problem.
6.  Do not dispose of electrical appliances as unsorted municipal waste, use separate collection facilities contact your local government for information regarding the collection systems available. If electrical appliances are disposed of in landfills or dumps, hazardous substances can leak into the ground and water then get into the food chain, damaging your health and well-being.

EMERGENCY OPERATION

NON-MAINTAINED (Disconnect L')

LED source normally off and battery on automatic charge (green LED 'on') when the A.C. supply is healthy. Solid state circuitry automatically switches the lamp on when the A.C. supply is interrupted.

MAINTAINED

LED light source is normally on. The battery is on automatic charge (green LED 'on'). Light source will switch on or remain on if A.C. supply is interrupted.

MONITORING

Green indicator lamp (LED) normally continuously 'on'. Indicator goes out if A.C. supply or charger fails.

FAULT FINDING AND CORRECTIVE ACTIONN

MONITORING LED NOT ILLUMINATED

A.C. supply not healthy. Battery not connected. Charger failed.

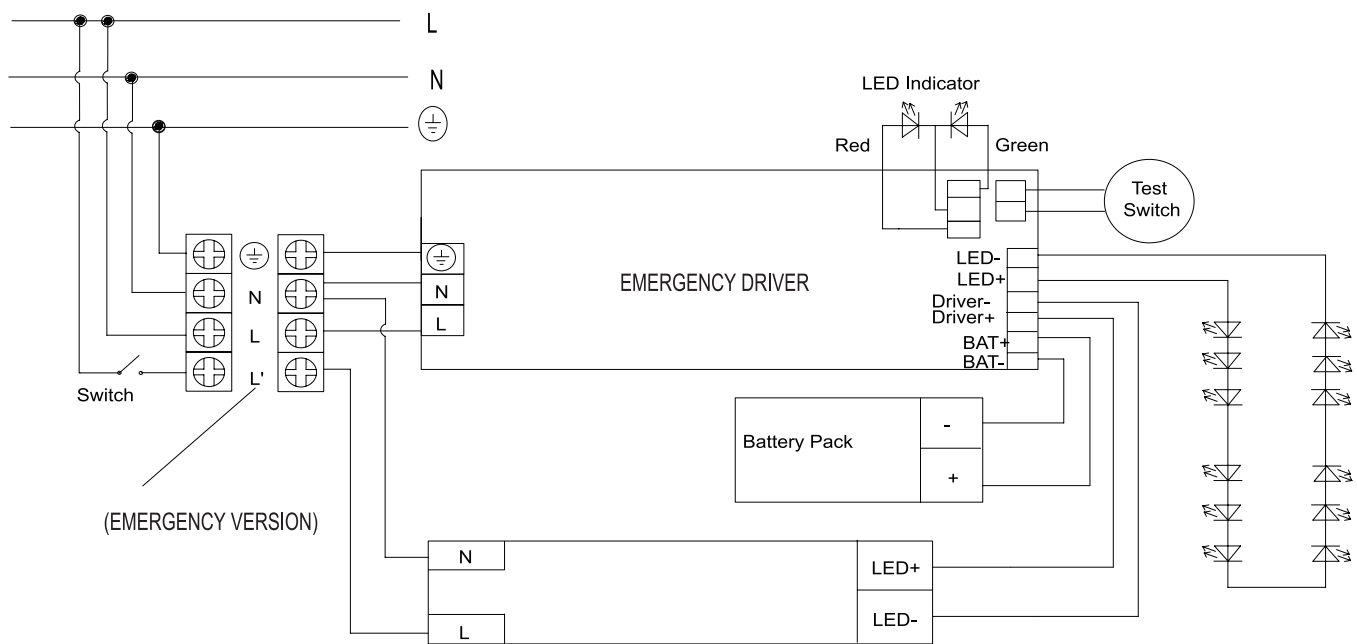
UNIT NOT MEETING REQUIRED EMERGENCY PERIOD

May need cycling: discharge then recharge for full 24 hours. Retest. Battery pack may need replacing if emergency duration still not met.

LIGHT SOURCE NOT FULLY ILLUMINATED

If LED module is broken or the illumination is hesitant and of a low level, please contact us to replace the components.

WIRING DIAGRAM



INSTRUCTIONS FOR AUTOMATIC TEST OPTION (EMERGENCY VERSION)

1. Once the unit is powered up it will automatically initiate a self test and diagnostics as follows:

- Every 4seconds: Check for battery disconnection, charger board fault, lamp failure and transformer failure.
- Every month: Perform a 3minute duration test.
- Every year: Perform a 1 Hour or 3 Hours duration test.

All test functions are factory preset and do not need field adjustment.

2. Dual Colour Indicator LED Status Meanings

- Green solid on: ready/normal operation
- Red: requires service

•	One flash, 4 second pause	Battery not connected
••	Two flashes, 4 second pause	Low battery voltage
•••	Three flashes, 4 second pause	Charger board fault
••••	Four flashes, 4 second pause	Transformer fault
•••••	Five flashes, 4 second pause	LED lamp fault

NOTE: After repairing a service fault, press and hold the test button for 2 seconds to reset the flashing indicator light to green.

3. Manual Test

Press test button once	30 second duration test
Press test button twice within 2 seconds	3 minute duration test
Press test button 3 times within 2 seconds	30 minutes duration test
Press test button 4 times within 2 seconds	1 or 3 hours duration test