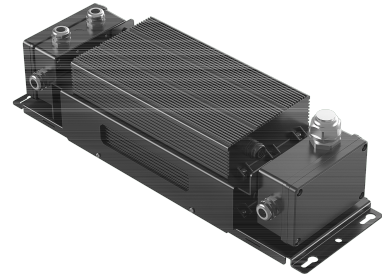


**EAN/GTIN**



6931783016459

**Product** 709098001400  
**Description** Accessory Flood Olympus - Driver - Inner pole mounting - 1000 W - DALI



Driver set of 1000W Floodlight Olympus for inner pole/cabinet mounting method.

**Technical Specifications**

Suitable for outdoor use	✓	Output power	1000 1000 Watt
Dimming 0-10 V	✗	Power consumption	1000 Watt
Dimming 1-10 V	✗	Length	500 Millimetre
Dimming DALI	✓	Width	159 Millimetre
Dimming DSI	✗	Height	139.5 Millimetre
Dimming DMX	✗		
Dimming potentiometer (integrated)	✗		
Dimming LineSwitch	✗		
Dimming manufacturer's proprietary system	✗		
Dimming mains voltage modulation	✗		
Dimming phase cut-off	✗		
Dimming phase cut-on	✗		
Dimming programmable	✗		
Dimming RF	✗		
Dimming Sine Wave Reduction	✗		
Dimming Touch and Dim	✗		
Dimming Zigbee	✗		
Dimming with push-button	✗		
Constant light output (CLO)	✗		
No dim function	✗		
Suitable for DC-voltage (primary side)	✓		
Degree of protection (IP)	IP66		
Protection class	I		
Operation by Bluetooth	✗		
Compatible with Apple HomeKit	✗		
Compatible with Google Assistant	✗		
Compatible with Amazon Alexa	✗		
Compatible with Casambi	✗		
IFTTT support available	✗		
Type of driver	LED Driver for Inner Pole/Cabinet Mounting		
Type of accessory/spare part	LED Driver		

**Item Information**

Product code	Description	EAN/GTIN	Net Weight	Gross Weight	Length Inner Box	Width Inner Box	Height Inner Box
709098001400	FloodOly-P Driver-Box-In-1000W-DALI	6931783016459	9.10 kg	9.80 kg	580 mm	225 mm	190 mm

