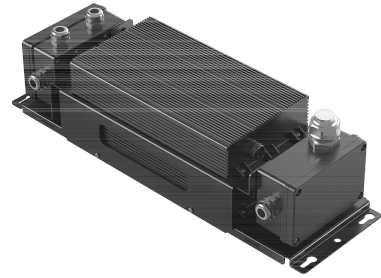


EAN/GTIN



6931783016459

Article 709098001400
Désignation Accessoire Flood Olympus - Driver - Montage poteau intérieur - 1000 W - DALI



Kit de commande du projecteur Olympus 1000W pour montage sur poteau intérieur/armoire.

Caractéristiques

Suitable for outdoor use	✓	Output power	1000 1000 Watt
Dimming 0-10 V	✗	Consommation d'énergie	1000 Watt
Dimming 1-10 V	✗	Longueur	500 Millimètre
Dimming DALI	✓	Largeur	159 Millimètre
Dimming DSI	✗	Hauteur	139,5 Millimètre
Dimming DMX	✗		
Dimming potentiometer (integrated)	✗		
Dimming LineSwitch	✗		
Dimming manufacturer's proprietary system	✗		
Dimming mains voltage modulation	✗		
Dimming phase cut-off	✗		
Dimming phase cut-on	✗		
Dimming programmable	✗		
Dimming RF	✗		
Dimming Sine Wave Reduction	✗		
Dimming Touch and Dim	✗		
Dimming Zigbee	✗		
Dimming with push-button	✗		
Constant light output (CLO)	✗		
No dim function	✗		
Suitable for DC-voltage (primary side)	✓		
IP	IP66		
Classe de protection	I		
Operation by Bluetooth	✗		
Compatible with Apple HomeKit	✗		
Compatible with Google Assistant	✗		
Compatible with Amazon Alexa	✗		
Compatible with Casambi	✗		
IFTTT support available	✗		
Type of driver	Driver de LED pour montage sur poteau intérieur/armoire		
Type of accessory/spare part	LED Driver		

Info d'article

Code d'article	Désignation d'article	EAN/GTIN	Poids brut (kg/pc)	Poids brut (kg)	Longueur boîte intérieure	Largeur boîte intérieure	Hauteur boîte intérieure
709098001400	FloodOly-P Driver-Box-In-1000W-DALI	6931783016459	9,10 kg	9,80 kg	580 mm	225 mm	190 mm

