



- Single-ended full IEC compliant LED Tube with patented driver
- Retrofit existing T8 lamps with EM ballast installations ONLY!
- No warm-up time, 100% light instantly when switched on
- Full glass body



SAFE AND EASY INSTALLATION: ONLY USE WITH LED DUMMY STARTER.  
Tubes are NOT suitable for serial installation.

## Specifications

Item Code	Item Description	Equivalent to (W)	Power (W)	Lumen	Efficacy (lm/W)	CCT (K)	Weight (kg/pc)
On-Off							
140062612	LED P T8 glass 600 8W 100pct 6500K CT	TL 1x18W		1050	131	6500	0.11

Single-ended connection



## Packaging Information

Item			Box			
Item Code	Item Description	EU HS Code	Dimensions (mm) (LxWxH)	Gross Weight (kg)	EAN	pc/box
140062612	LED P T8 glass 600 8W 100pct 6500K CT	85395200	700x28x28	0.19	6945730453075	1

Technical Specifications	
Lifetime (L70)	50,000 h
On-/Off-cycles	100,000
Dimmability	On-Off
Beam angle	220°
Finishing	White
Colour rendering index (CRI)	> 80
Fitting	G13

Electrical Supply	
Frequency	50/60 Hz
Nominal voltage	220-240 V
DC input voltage	No
Ambient Conditions	
Operating temperature	-25-+45°C
Application temperature	+25°C
Storage environment	-25-+50°C



**ENERGY**

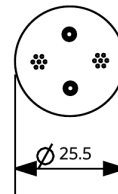
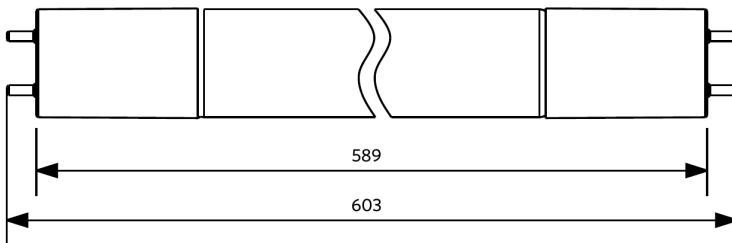
OPPLE Lighting  
140062612

**8**  
kWh/1000h

2019/2015

## Dimensional Drawing (mm)

LED P T8 glass 600



## Photometric Data

