



Smart Sensor (Microwave)

- NEW: Wireless communication based on future-proof, standardized Bluetooth SIG Mesh protocol
- Compact Bluetooth® presence detector for use in OPPLE Smart Lighting System
- Large detection area of Ø 20m
- Suitable for the OPPLE Smart Daylight regulation
- Very easy to set up with the OPPLE Smart Lighting App, or Smart Connect Box through the web user interface
- Suitable for high ceiling applications (max detection height of 13m)
- Adjustable detection area for low/high ceiling applications
- Complete wireless communication via standardized Bluetooth® Low Energy (BLE) SIG Mesh protocol



Specifications

Item Code	Item Description	Sensor range
821006001800	LEDSmart-BLE2-Rc-MW-Sensor	20 m

Accessories



IP20

560098000600
LEDSmart-Sensor Surface-Module-WH



IP65

IK07

560006000900
LEDSmart-Sensor IP65-Base-Module
Excluding sensor



IP65

IK07

560006001000
LEDSmart-Sensor IP65-Module
Excluding sensor

Technical Specifications	
IP-class	IP20 / IP65*
IK-class	IK02 / IK07*
Finishing	White RAL9003
Communication	Opplé Bluetooth® Low Energy Mesh (BLE2)
Protection Class	II
Detection diameter (when installed at 2.5-13m height)	Max Ø 20m
Detection angle	360°
Detection technology	Microwave (MW)
Switch-off delay time	1min-60min
Daylight balance	Yes
Temperature sensor	No
Humidity sensor	No

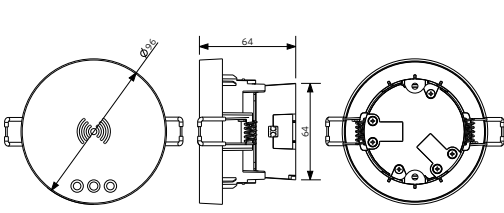
Electrical Supply	
Power consumption	2.2W
Nominal voltage	220-240 V AC
Frequency	50/60 Hz
Mechanical Properties	
Material housing	PC
Ambient conditions	
Operating Temperature	-30~+55°C

5 YEARS WARRANTY

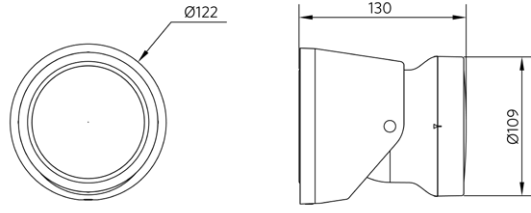


* Only in combination with IP65 accessory modules

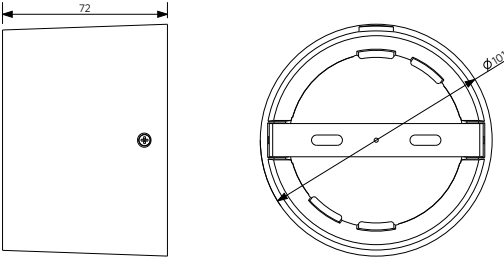
Dimensional drawing (mm)



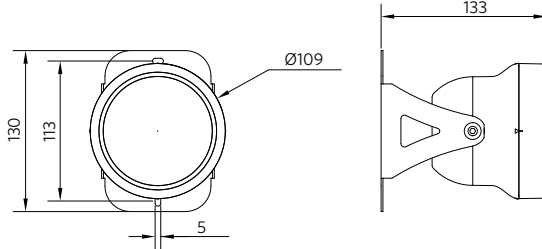
821006001800 - LEDSmart-BLE2-Rc-MW-Sensor



560006000900 - LEDSmart-Sensor IP65-Base-Module

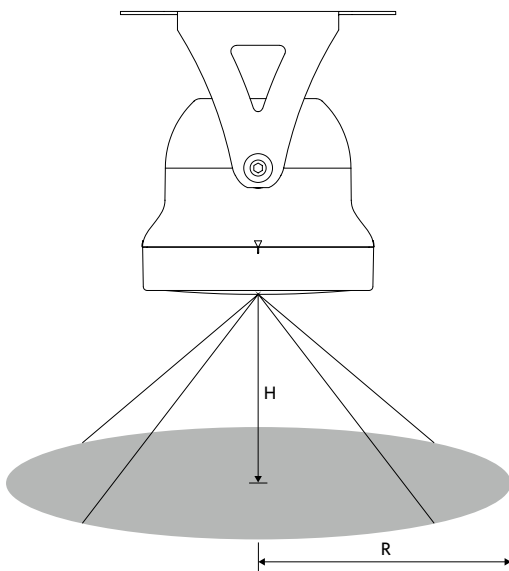


560098000600 - LEDSmart-Sensor Surface-Module-WH

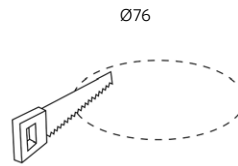


560006001000 - LEDSmart-Sensor IP65-Module

Detection range

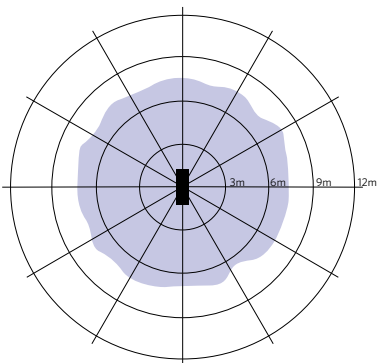


Installation opening drawing (mm)

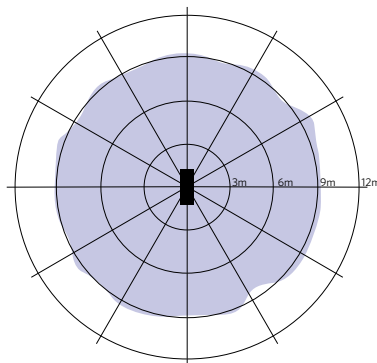


821006001800 - LEDSmart-BLE2-Rc-MW-Sensor

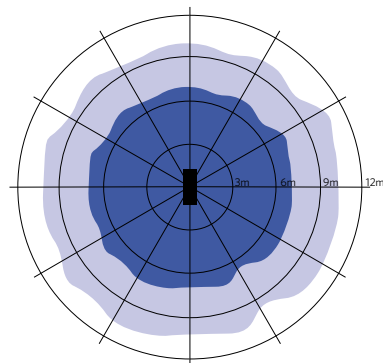
Recommended Height (m)	Sensitivity Setting	Detection Radius (m)
3	Low	7
8	Middle	9
9	High	10
12	High	7



Installation - Low Ceiling
Suggested installation height 3m



Installation - Medium Ceiling
Suggested installation height 8m



Installation - High Ceiling
Suggested installation height 9-12m

