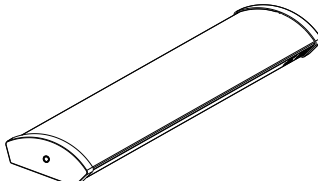
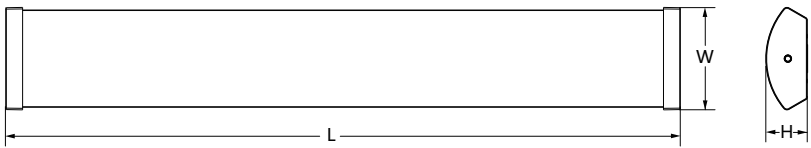


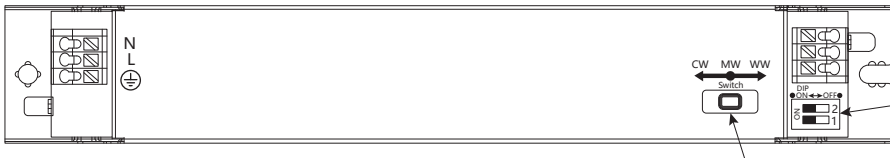
# LED Linear Ecomax

Item Code	Luminaire Description	CCT	kg
531000018900	LEDLinear-E2 L06-10/18W-830/840	3000K/4000K	1.80kg
531000019000	LEDLinear-E2 L12-22/36W-830/840	3000K/4000K	2.80kg
531000019100	LEDLinear-E2 L15-30/50W-830/840	3000K/4000K	3.30kg





Model	L(mm)	W(mm)	H(mm)
LEDLinear-E2 L06 10/18W	600	182	74
LEDLinear-E2 L12 22/36W	1200	182	74
LEDLinear-E2 L15 30/50W	1500	182	74



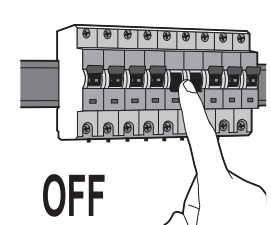
CCT	Toggle Switch
3000K	WW
4000K	CW

Power	Toggle Switch	
	1	2
10W	OFF	OFF
18W	ON	ON
22W	OFF	OFF
36W	ON	ON
30W	OFF	OFF
50W	ON	ON

### Light Source

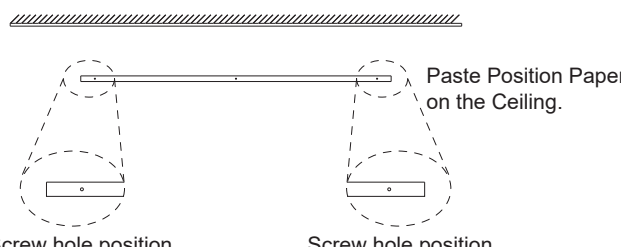
Item Code	Product Description	N	Light source code	QR Code	Energy Label
531000018900	LEDLinear-E2 L06-10/18W-830/840	1	LS105001832		
531000019000	LEDLinear-E2 L12-22/36W-830/840	1	LS105003632		
531000019100	LEDLinear-E2 L15-30/50W-830/840	1	LS105005032		

①



**OFF**

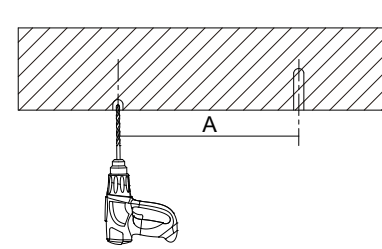
②



Screw hole position      Screw hole position

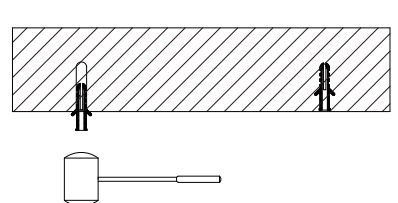
---

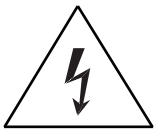
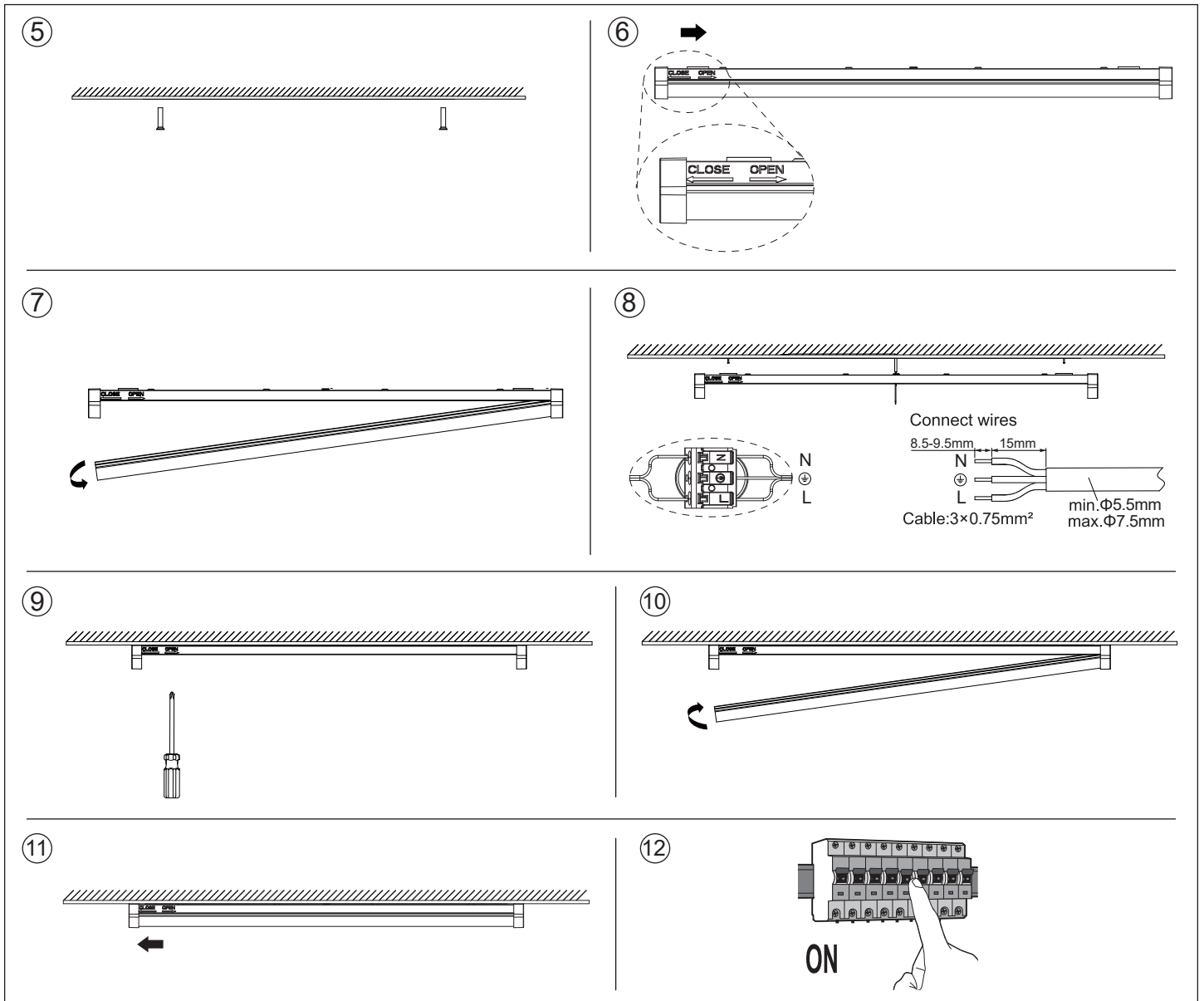
③



Model	A(mm)
LEDLinear-E2 L06 10/18W	431±1
LEDLinear-E2 L12 22/36W	998±1
LEDLinear-E2 L15 30/50W	998±1

④





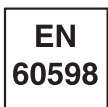
For non-user replaceable light sources.  
The light source contained in this luminaire shall only be replaced by the manufacturer or his service agent or a similar qualified person.



Caution :Any operation is forbidden while power is on.  
Indoor use only



For use in environments where normal non-conductive/conductive dust accumulation may be expected, not for use in environments with expected high/unusual dust accumulation.



Data subject to change  
Les données sont sujettes à modifications  
Änderungen vorbehalten

OPPLE Lighting Co., Ltd.  
Room 411, Building 1 No. 6111,  
Longdong Avenue, Pudong New District,  
Shanghai City 201201, P. R. China  
www.opple.com

Opplé Lighting B.V.  
Meerenakkerweg 1-07  
5652 AR Eindhoven  
The Netherlands  
service@opple.com