

# Surface Panel Performer

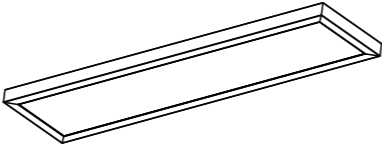
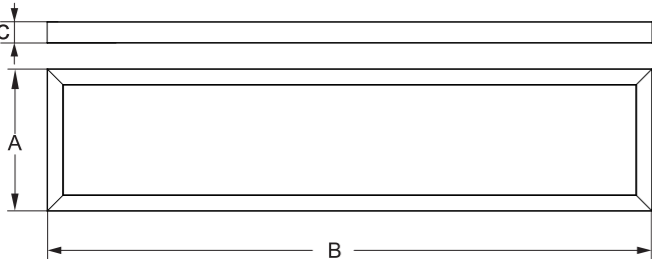
# OPPLE

Version date 17-01-2024  
www.opple.com

# OPPLE

Item Code	Luminaire Description	CCT	kg
542003155900	LEDPanelS-Sf-P L12-40W-830/840	3000K/4000K	4.1kg
542003156000	LEDPanelS-Sf-P L12-40W-DALI-830/840	3000K/4000K	4.1kg
542003156100	LEDPanelS-Sf-P L12-40W-BLE2-830/840	3000K/4000K	4.1kg
542003156200	LEDPanelS-Sf-P L15-50W-830/840	3000K/4000K	4.8kg
542003156300	LEDPanelS-Sf-P L15-50W-DALI-830/840	3000K/4000K	4.8kg
542003156400	LEDPanelS-Sf-P L15-50W-BLE2-830/840	3000K/4000K	4.8kg
542098045500*	LEDPanelS-P Suspension-Kit-G6	/	0.16kg

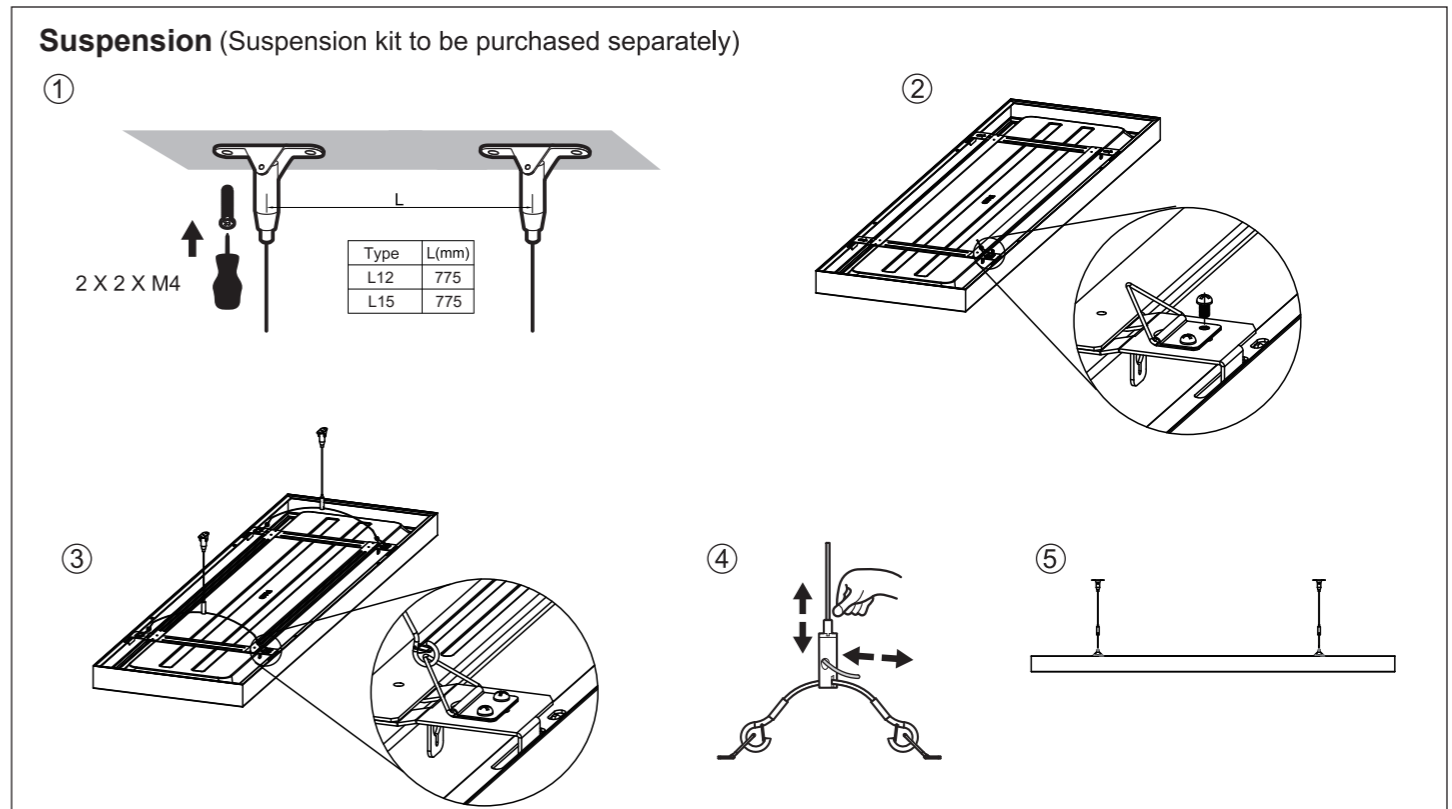
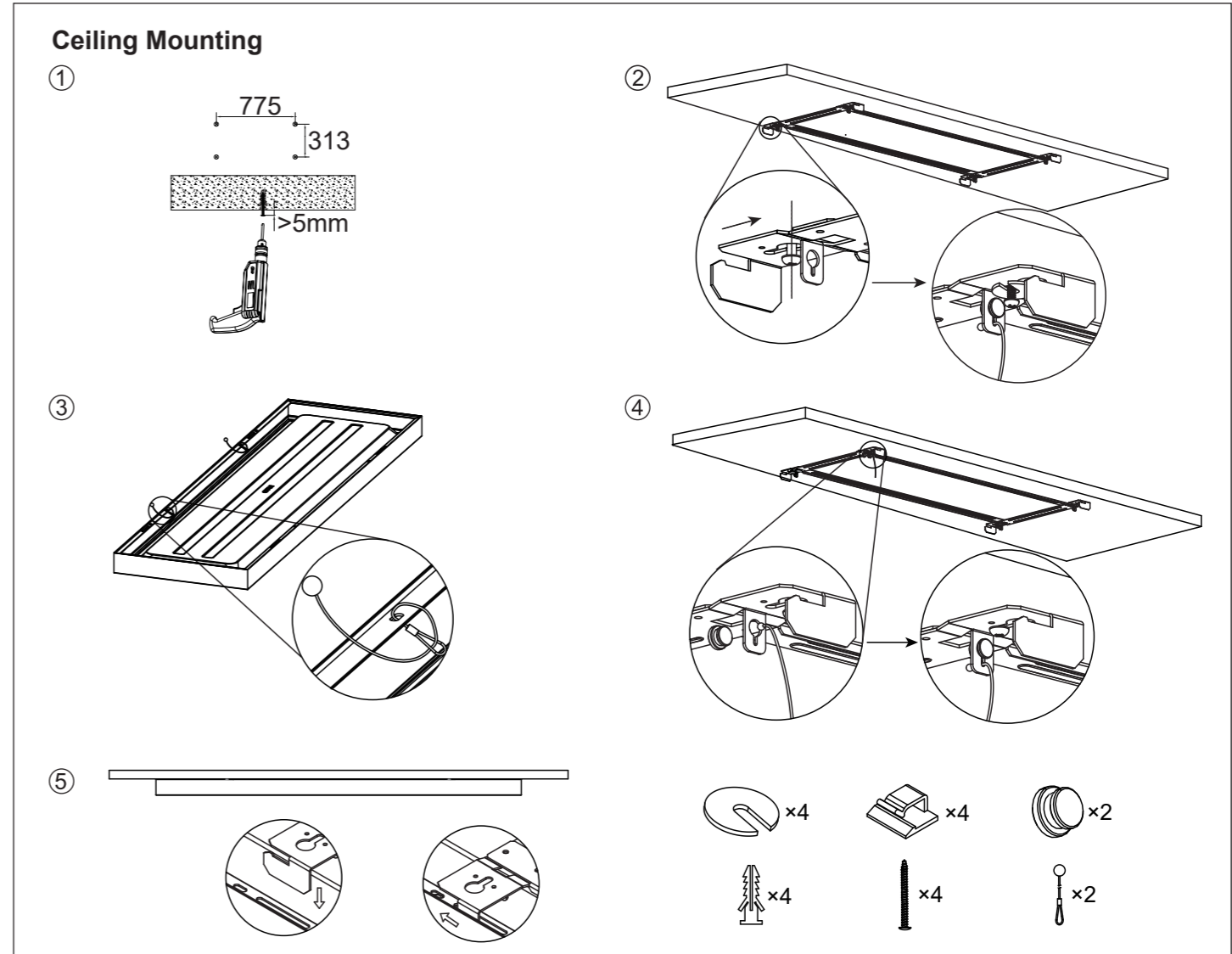
\* Accessories should be purchased separately

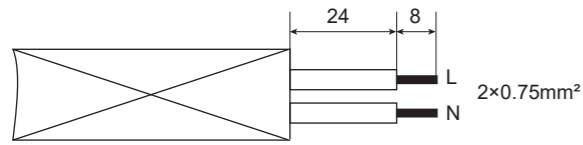
Model Name	A (mm)	B (mm)	C (mm)
LED PL-SF-P L12-40W	370	1274	55
LED PL-SF-P L12-40W-DALI	370	1274	55
LED PL-SF-P L12-40W-BLE2	370	1274	55
LED PL-SF-P L15-50W	370	1574	55
LED PL-SF-P L15-50W-DALI	370	1574	55
LED PL-SF-P L15-50W-BLE2	370	1574	55

### Light Source

Product Code	Product Description	N	Light source code	QR Code	Energy Label
542003155900	LEDPanelS-Sf-P L12-40W-830/840	3	LS081001232		
542003156000	LEDPanelS-Sf-P L12-40W-DALI-830/840				
542003156100	LEDPanelS-Sf-P L12-40W-BLE2-830/840				
542003156200	LEDPanelS-Sf-P L15-50W-830/840	6	LS081000832		
542003156300	LEDPanelS-Sf-P L15-50W-DALI-830/840				
542003156400	LEDPanelS-Sf-P L15-50W-BLE2-830/840				

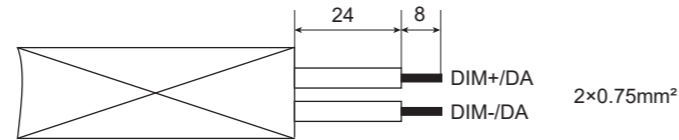
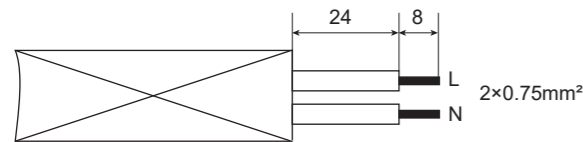


### For On-off/ BLE



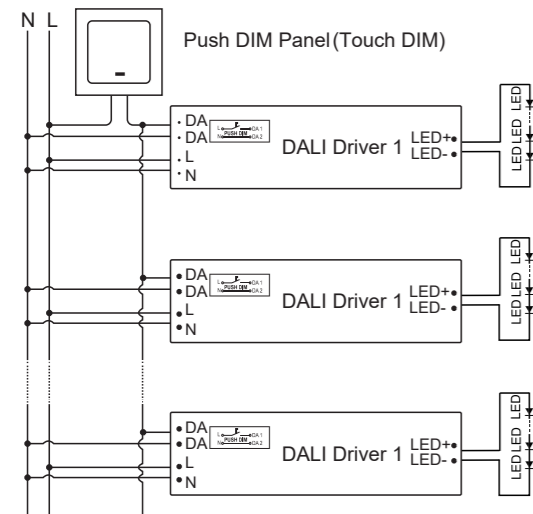
Bluetooth Operating Frequency:2402-2480MHz  
Bluetooth Max Transmission Power:<20dBm

### For Dali



For TOUCH DIM FUNCTIONALITY (For DALI2 System)

Touch DIM(Push DIM) Diagram



Function	Contact Duration	Reaction
Short Push	<0.5 s	Turn on or off
Long Push	<0.5 s	Dimming up or down
Double Push	<0.3 s	Maximum brightness

Note:

- a. Dim level: 1-100%;
- b. With the Power off memory function, the power-down state will be recovered when power on again.

Remark: Only use open push button without indicator light.  
Maximum cable length between each Unit: 20 meters.

### Caution

Terminal block not included. Installation may require advice from a qualified person. Only use suitable connection boxes with internal terminal blocks conform to EN60998-2-1 or EN60998-2-2. Terminal should be capable for at least 450V 16A, 0.75mm<sup>2</sup> wiring.

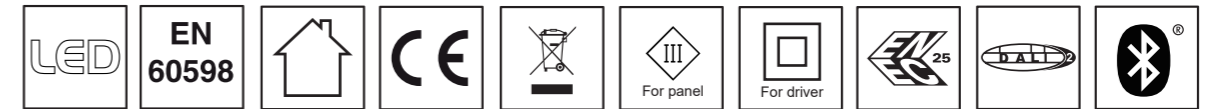
The luminaire is only suitable for safety extra low voltage supply (<50V a.c.; <120V d.c.). The controlgear for the connection panel should be SELV. It must be basic insulation between FELV and SELV, as is FELV and LV supply for 1-10V and DALI type.

For non-user replaceable light sources:  
The light source contained in this luminaire shall only be replaced by the manufacturer or his service agent or a similar qualified person.



Caution: Any operation on LED module is forbidden while power-on.  
Zur Vermeidung von Risiken müssen defekte Leitungen ausschließlich vom Hersteller, Inverkehrbringer oder Fachmann ausgetauscht werden.  
Achtung: In Betrieb ist keine Arbeit am LED-Modul erlaubt.

In case of damage to the wire, it has to be replaced only by the manufacturer, distributor or by an expert, to avoid risks.



Data subject to change  
Les données sont sujettes à modifications  
Änderungen vorbehalten

OPPLE Lighting Co., Ltd.  
Room 411, Building 1 No. 6111,  
Longdong Avenue,  
Pudong New District,  
Shanghai City 201201,  
P. R. China

Opplé Lighting B.V.  
Meerenakkerweg 1-07  
5652 AR Eindhoven  
The Netherlands  
service@opple.com  
www.opple.com