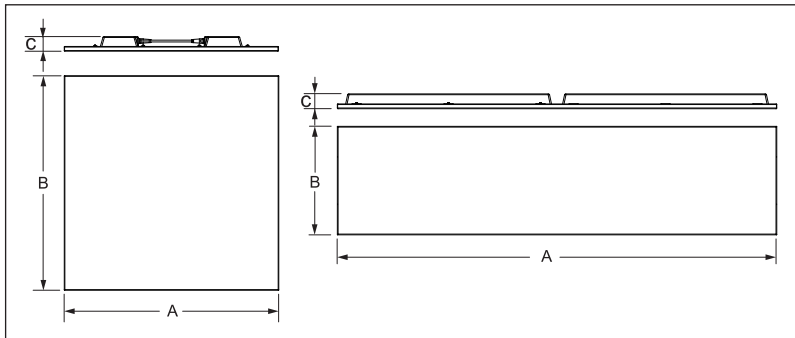
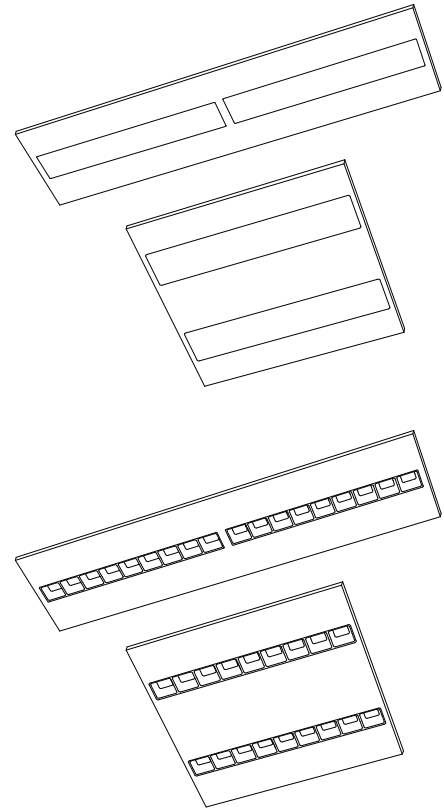


LED Panel Torino&Lugano

Item Code	Luminaire Description	CCT	kg
542003171500	LEDTorino-P Re295-32W-930/940-U19	3000K/4000K	4.21kg
542003171600	LEDTorino-P Sq595-32W-930/940-U19	3000K/4000K	4.06kg
542003171700	LEDTorino-P Re295-32W-BLE2-930/940-U19	3000K/4000K	4.32kg
542003171800	LEDTorino-P Sq595-32W-BLE2-930/940-U19	3000K/4000K	4.17kg
542003171900	LEDTorino-P Re295-32W-DALI-930/940-U19	3000K/4000K	4.32kg
542003172000	LEDTorino-P Sq595-32W-DALI-930/940-U19	3000K/4000K	4.17kg
542003172100	LEDTorino-P Re295-32W-BLE2-TW-U19	2700K-6500K	4.28kg
542003172200	LEDTorino-P Sq595-32W-BLE2-TW-U19	2700K-6500K	4.14kg
542003172300	LEDTorino-P Re295-32W-DALI-TW-U19	2700K-6500K	4.32kg
542003172400	LEDTorino-P Sq595-32W-DALI-TW-U19	2700K-6500K	4.15kg
542003174900	LEDTorino-P Re295-32W-930/940-U19-PL	3000K/4000K	3.48kg
542003175000	LEDTorino-P Sq595-32W-930/940-U19-PL	3000K/4000K	3.37kg
542003175100	LEDTorino-P Re295-32W-TW-U19-PL	2700K-6500K	3.48kg
542003175200	LEDTorino-P Sq595-32W-TW-U19-PL	2700K-6500K	3.37kg
542003172500	LEDLugano-P Re295-32W-930/940-U16	3000K/4000K	4.21kg
542003172600	LEDLugano-P Sq595-32W-930/940-U16	3000K/4000K	4.06kg
542003172700	LEDLugano-P Re295-32W-BLE2-930/940-U16	3000K/4000K	4.32kg
542003172800	LEDLugano-P Sq595-32W-BLE2-930/940-U16	3000K/4000K	4.17kg
542003172900	LEDLugano-P Re295-32W-DALI-930/940-U16	3000K/4000K	4.32kg
542003173000	LEDLugano-P Sq595-32W-DALI-930/940-U16	3000K/4000K	4.17kg
542003173100	LEDLugano-P Re295-32W-BLE2-TW-U16	2700K-6500K	4.28kg
542003173200	LEDLugano-P Sq595-32W-BLE2-TW-U16	2700K-6500K	4.14kg
542003173300	LEDLugano-P Re295-32W-DALI-TW-U16	2700K-6500K	4.32kg
542003173400	LEDLugano-P Sq595-32W-DALI-TW-U16	2700K-6500K	4.15kg
542003175300	LEDLugano-P Re295-32W-930/940-U16-PL	3000K/4000K	3.48kg
542003175400	LEDLugano-P Sq595-32W-930/940-U16-PL	3000K/4000K	3.37kg
542003175500	LEDLugano-P Re295-32W-TW-U16-PL	2700K-6500K	3.48kg
542003175600	LEDLugano-P Sq595-32W-TW-U16-PL	2700K-6500K	3.37kg
542003021800*	LEDPanelRc-S-B2 Mounting-Springs	/	0.11kg
542098033000*	LEDPanelRc-S-B2 Re298 Mounting-Springs	/	0.13kg
542098045500*	LEDPanelS-P Suspension-Kit-G6	/	0.16kg

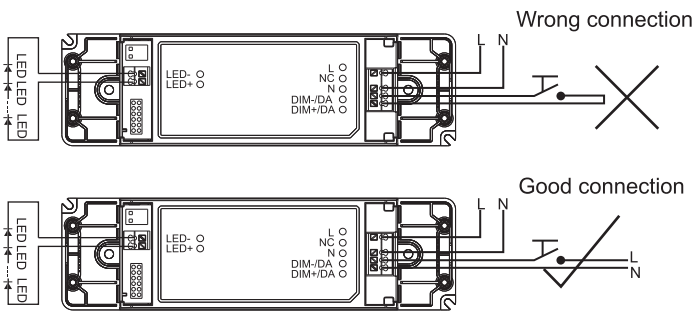
* Accessories should be purchased separately.



Model	A(mm)	B(mm)	C(mm)
LED PL-TO-P RE295-32W-U19-PL	1195	295	40
LED PL-TO-P SQ595-32W-U19-PL	595	595	40
LED PL-TO-P RE295-32W-TW-U19-PL	1195	295	40
LED PL-TO-P SQ595-32W-TW-U19-PL	595	595	40
LED PL-LU-P RE295-32W-U16-PL	1195	295	40
LED PL-LU-P SQ595-32W-U16-PL	595	595	40
LED PL-LU-P RE295-32W-TW-U16-PL	1195	295	40
LED PL-LU-P SQ595-32W-TW-U16-PL	595	595	40

Light Source	Model	N	Light source code	QR Code	Energy Label
	LED PL-TO-P RE295-32W-U19	2	LS107001633		
LED PL-TO-P SQ595-32W-U19	2				
LED PL-TO-P RE295-32W-TW-U19	2	LS107001635			
LED PL-TO-P SQ595-32W-TW-U19	2				
LED PL-LU-P RE295-32W-U16	2	LS108001633			
LED PL-LU-P SQ595-32W-U16	2				
LED PL-LU-P RE295-32W-TW-U16	2	LS108001635			
LED PL-LU-P SQ595-32W-TW-U16	2				

TOUCH DIM FUNCTIONALITY (For DALI2 System)



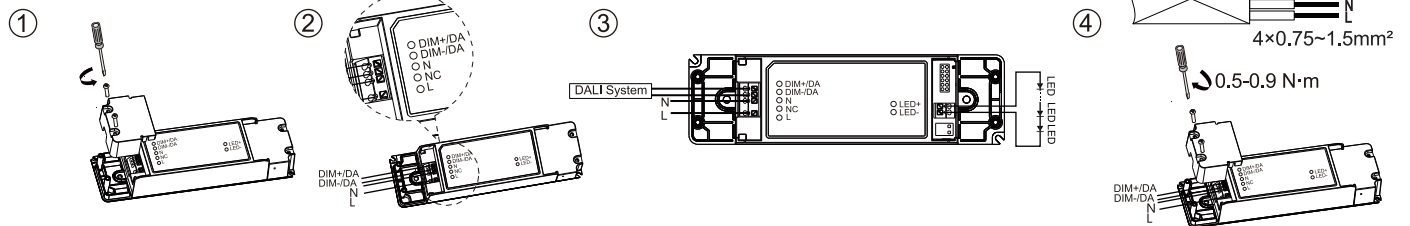
Function	Contact Duration	Reaction
Ignore	< 50ms	Nothing
Short Push	50-500ms	Turn on or off
Long Push	> 500ms	Dimming up or down
Synchronisation	10s	Go to SYNC level, 50%
	20s	Go to SYNC level, 100%

Touch Dim Terminal Consumption: Typical 3mA(220V).

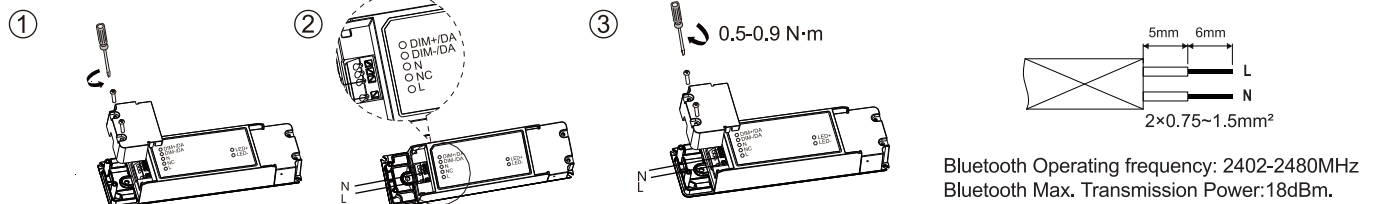
Warning: TD function and DALI function can't be used at the same time, avoid damaging the DALI system by high voltage.

Driver Mounting (Lay-in)

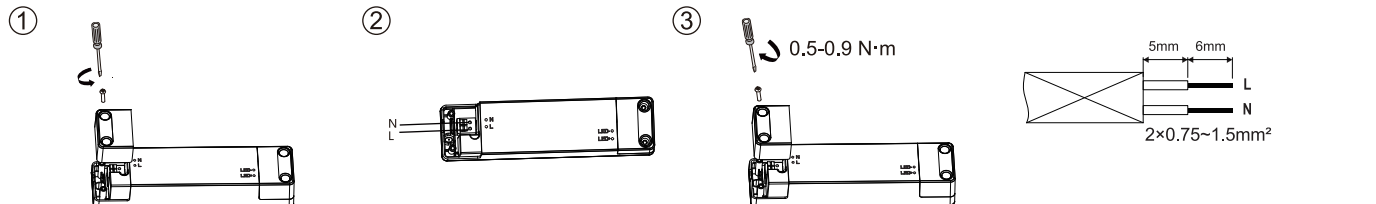
For DALI



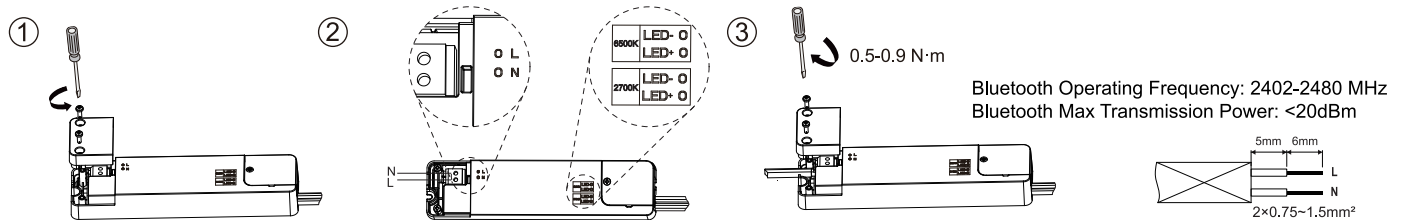
For BLE2



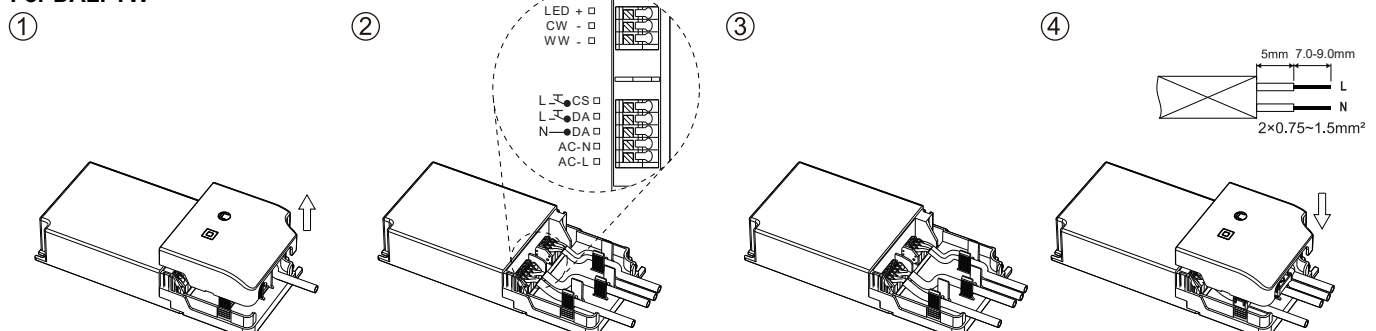
For Static



For BLE2-TW

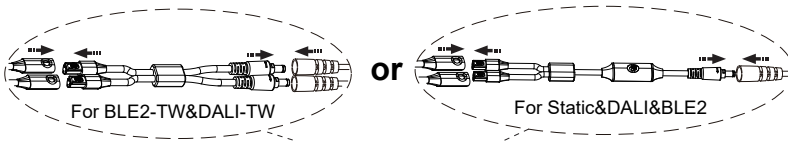


For DALI-TW

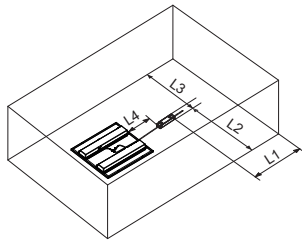
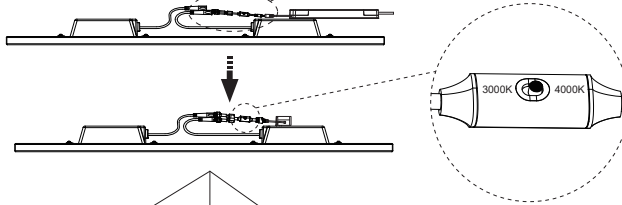
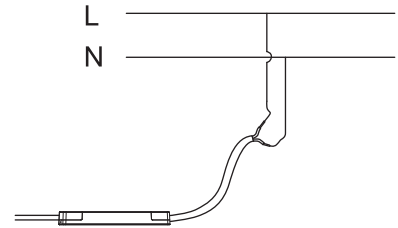


Wire Connection

①



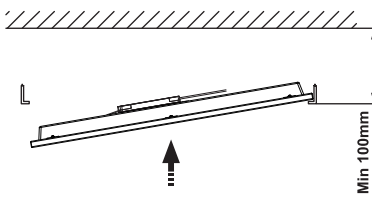
②



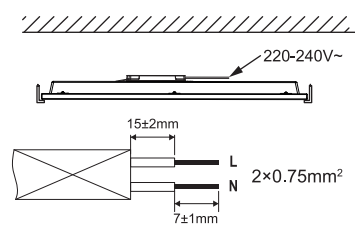
Type	L1(mm)	L2(mm)	L3(mm)	L4(mm)
SQ595	≥500	≥500	≥500	≤450
RE295				

Recessed Installation

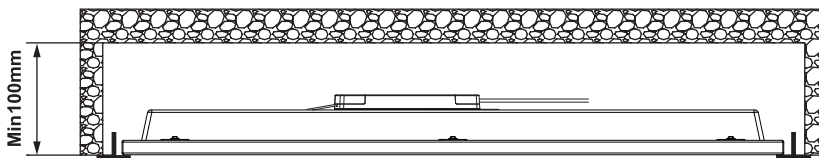
①



②

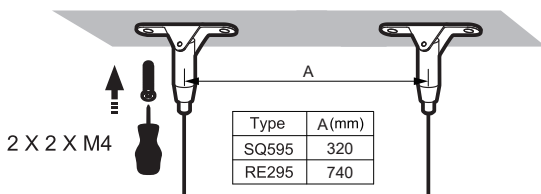


Terminal block not included. Installation may require advice from a qualified person. Only use suitable connection boxes with internal terminal blocks conform to EN60998-2-1 or EN60998-2-2 Terminal should be capable for at least 450V 16A, 0.75mm² wiring.



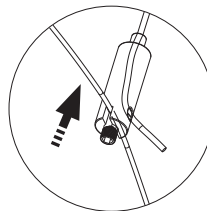
Suspended Installation (Suspension kit)

①

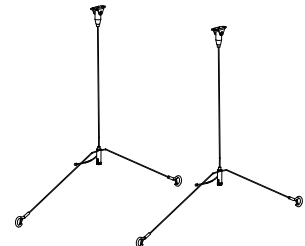


Type	A(mm)
SQ595	320
RE295	740

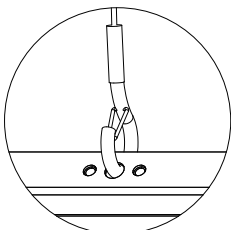
②



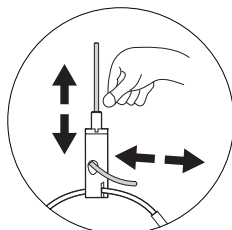
③



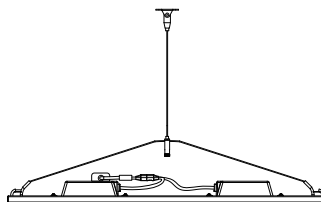
④



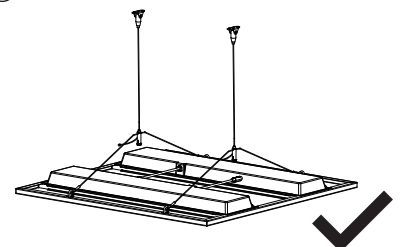
⑤



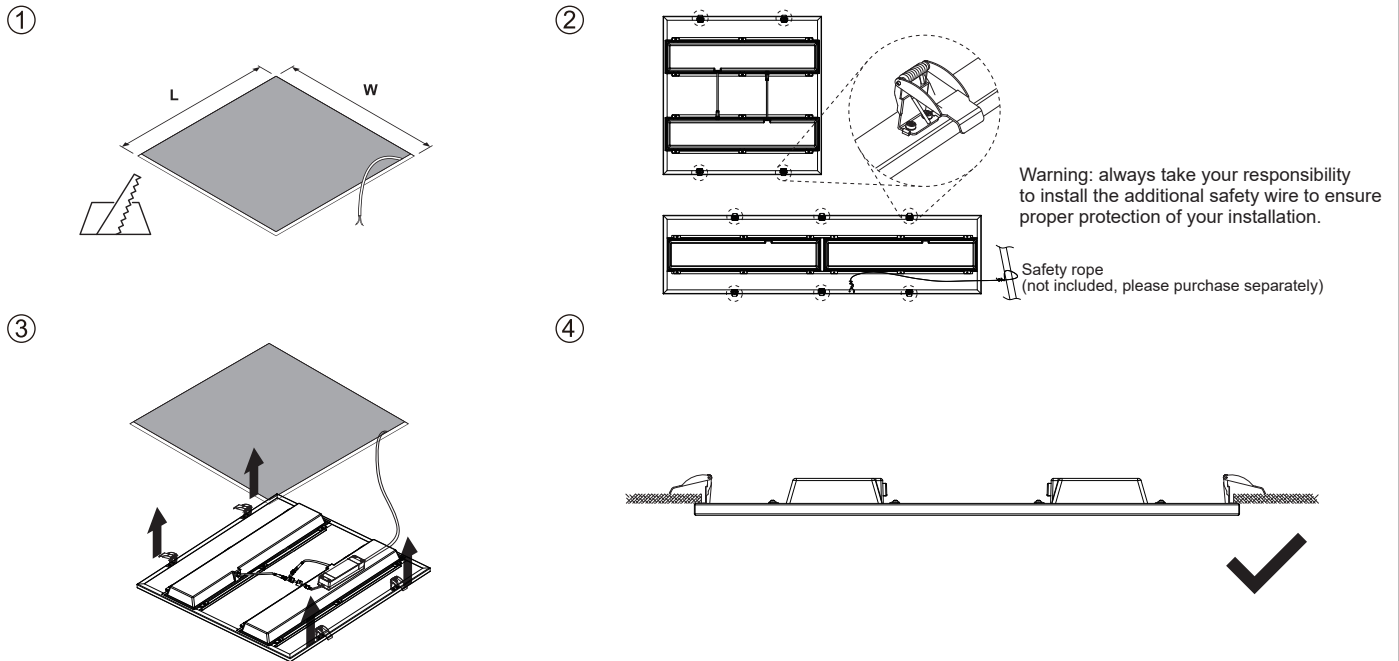
⑥



⑦



Recessed Mounting (Mounting Springs)



Panel LED	L	W		x4		x8
595×595	584mm	584mm				

Panel LED	L	W		x6		x12
295×1195	284mm	1174mm				

The luminaire is only suitable for safety extra low voltage supply (<50Va.c.; <120Vd.c.).

The controlgear for the connection panel should be SELV.
It must be basic insulation between FELV and SELV, as is FELV and LV supply for 1-10V and DALI type.

To reduce the risk of strangulation the flexible wiring connected to this luminaire shall be effectively fixed to the wall if the wiring is within arm's reach.

For non-user replaceable light sources.

The light source contained in this luminaire shall only be replaced by the manufacturer or his service agent or a similar qualified person.

Caution :Any operation is forbidden while power is on.

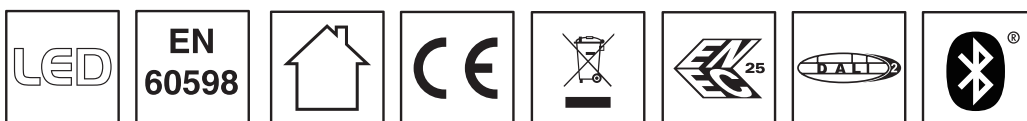
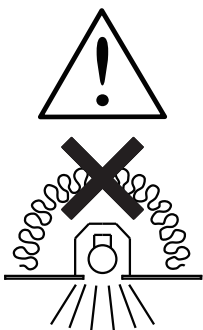
Indoor use only.

In case of damage to the wire, it must be replaced only by the manufacturer, distributor or by an expert, to avoid risks.

Zur Vermeidung von Risiken müssen defekte Leitungen ausschließlich vom Hersteller, Inverkehrbringer oder Fachmann ausgetauscht werden.

Luminaires not suitable for covering with thermally insulating material.

Leuchten sind nicht mit thermisch isolierenden Materialien abzudecken.



Data subject to change
Les données sont sujettes à modifications
Änderungen vorbehalten

OPPLE Lighting Co., Ltd.
Room 411, Building 1 No. 6111,
Longdong Avenue, Pudong New District,
Shanghai City 201201, P. R. China
www.opple.com

Opplé Lighting B.V.
Meerenakkerweg 1-07
5652 AR Eindhoven
The Netherlands
service@opple.com