



## Suspended Linear Tallinn

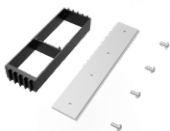
- Modern direct/indirect suspended LED linear
- Low glare UGR < 10, suitable for office spaces
- Magnetic connection possible for flexible mounting of multiple fixtures
- Stylish black reflector
- Flexible due to 2700-6500K Tunable White (TW)
- Professional finishing in adonized black or matt white
- Available in DALI and Smart (BLE2)
- DALI2 driver compatible with 230V push dimming



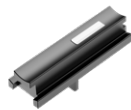
## Specifications

Item Code	Item Description	Equivalent to (W)	Power (W)	Lumen	Efficacy (lm/W)	UGR	CCT (K)	RAL	Gross Weight (kg)
<b>Tunable White/DALI2</b>									
529000105800	LEDTallinn-P L15-45W-DALI-TW-D/I-U10-WH	TL 1x80W	45	4050	90	≤ 10	2.7K-6.5K	○	2.7
529000105900	LEDTallinn-P L15-45W-DALI-TW-D/I-U10-BL	TL 1x80W	45	4050	90	≤ 10	2.7K-6.5K	●	2.7
<b>Tunable White/Smart</b>									
529000106000	LEDTallinn-P L15-45W-BLE2-TW-D/I-U10-WH	TL 1x80W	45	4050	90	≤ 10	2.7K-6.5K	○	2.7
529000106100	LEDTallinn-P L15-45W-BLE2-TW-D/I-U10-BL	TL 1x80W	45	4050	90	≤ 10	2.7K-6.5K	●	2.7

## Accessories



529098030800  
LEDTallinn-P-Connecti-  
on-Kit



529098031100  
LEDTallinn-P-Magnet-  
End-Cap



529098031000  
LEDTallinn-P-Magnet-Hub

Connection kit needed for linear connection of 2 Tallinn fixtures. Magnet end-cap needed for every Tallinn that is connected to a magnet hub.

### Technical Specifications

Lifetime (L70)	70,000 h
Lifetime (L80)	50,000 h
On-/Off-cycles	100,000
Dimmability	DALI2 / BLE2
Finishing	White RAL9003 / Black RAL 9004
Beam angle	120° up (50%) / 50° down (50%)
Colour rendering index (CRI)	> 90
Ingress Protection (IP)	IP20
Impact strength (IK)	IK02
Protection class	I
Risk group (EN 62471)	RG0
With control gear	Yes
Glow wire test	650°C
Driver failure rate (at 5,000 hrs)	< 1%
Power factor	> 0.9

### Electrical Supply

Frequency	50 - 60 Hz
Nominal voltage	220 - 240 V
DC input voltage	See catalogue appendix Connection Specifications

### Mechanical Properties

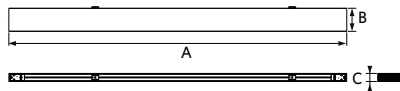
Housing material	Aluminium
Optical material	Polycarbonate

### Ambient Conditions

Operating temperature	-10 ~ 45°C
Application temperature	25°C
Storage environment	-25 ~ 50°C



## Dimensional Drawing (mm)



Type	A	B	C
L15	1465	100	35