



Fita LED - IP67

- Gama completa de fitas LED
- Ampla gama de perfis com várias opções de cores



Especificações

Código item	Descrição do item	Eficácia (lm/W)	CCT (K)	LEDs por metro	Comprimento mínimo de corte (mm)	Potência por metro (W/m)	Lúmen por metro (lm/M)	Peso Líquido (kg/peça)
IP67								
806001007400	LEDStrip-E 4.8W-930-600-IP67	110	3000	120	50	4.8	600	0.25

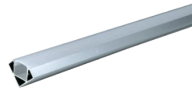
Acessórios



806098002000
LEDStrip Profile-SF-15x15-AL



806098002500
LEDStrip Profile-RC-15x15-AL



806098002600
LEDStrip Profile-Corner-18x18-AL



820002006500
LEDDriver 24V-75W-DALI-IP67



820002006600
LEDDriver 24V-150W-DALI-IP67



820002006700
LEDDriver 24V-240W-DALI-IP67



820003003900
LEDDriver 24V-75W-10V/PWM-IP67



820003004000
LEDDriver 24V-150W-10V/PWM-IP67



820003004100
LEDDriver 24V-240W-10V/PWM-IP67



806098004600
LEDStrip Silicone-Kit-IP67



806098004700
LEDStrip Mounting-Kit-10-IP67

Informações sobre produtos e embalagens

Item			Caixa			
Código item	Descrição do item	Código HS da UE	Dimensões (mm) (CxLxA)	Peso Bruto (kg/peça)	EAN	pc/caixa
806001007400	LEDStrip-E 4.8W-930-600-IP67	94054239	240x220x14	0.34	6941491788579	1
806098002000	LEDStrip Profile-SF-15x15-AL	94059900	2050x33x33	0.20	6931783054406	1
806098002100	LEDStrip Profile-SF-15x15-BL	94059900	2050x33x33	0.20	6931783054413	1
806098002500	LEDStrip Profile-RC-15x15-AL	94059900	2050x33x33	0.20	6931783054451	1
806098002600	LEDStrip Profile-Corner-18x18-AL	94059900	2050x33x33	0.20	6931783054468	1
820009007900	LEDDriver 24V-36W	85369010	200x50x38	0.17	6941491787428	1
820009008000	LEDDriver 24V-60W	85369010	237x50x38	0.23	6941491787435	1
820009008100	LEDDriver 24V-120W	85369010	298x50x38	0.23	6941491787398	1
820009008200	LEDDriver 24V-160W	85369010	298x50x38	0.28	6941491787404	1
820009008300	LEDDriver 24V-240W	85369010	335x51x38	0.28	6941491787411	1
820002006100	LEDDriver 24V-40W-DALI/10V/PWM	85369010	188x45x32	0.21	6941491788197	1
820002006200	LEDDriver 24V-75W-DALI/10V/PWM	85369010	301x46x37	0.44	6941491788203	1
820002006300	LEDDriver 24V-150W-DALI/10V/PWM	85369010	301x46x37	0.44	6941491788210	1
820002006400	LEDDriver 24V-240W-DALI/10V/PWM	85369010	366x46x37	0.63	6941491788227	1
820002006500	LEDDriver 24V-75W-DALI-IP67	85369010	310x82x27	0.84	6941491788234	1
820002006600	LEDDriver 24V-150W-DALI-IP67	85369010	310x82x27	0.83	6941491788241	1
820002006700	LEDDriver 24V-240W-DALI-IP67	85369010	290x85x31	1.08	6941491788258	1
820003003900	LEDDriver 24V-75W-10V/PWM-IP67	85369010	310x82x27	0.81	6941491788265	1
820003004000	LEDDriver 24V-150W-10V/PWM-IP67	85369010	310x82x27	0.85	6941491788272	1
820003004100	LEDDriver 24V-240W-10V/PWM-IP67	85369010	290x85x31	1.08	6941491788289	1
806098004600	LEDStrip Silicone-Kit-IP67	32141010	61x12x11	0.04	6931783054369	1
806098004700	LEDStrip Mounting-Kit-10-IP67	39174000	21x12x9	0.04	6931783054376	1
822010000700	LEDStrip RGBW/TW/DIM-BLE2-Controller	94059200	120x57x31	0.09	6937209623362	1

Especificações Técnicas

Vida útil (L70)	50 000
Regulação	DALI2 / 1-10V / PWM
IRC	> 90
Grau de proteção (IP)	IP67
Grupo de risco (EN 62471)	RG0
Com equipamento de controle	False

Alimentação elétrica

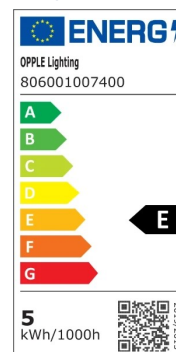
Frequência	50 - 60
Tensão nominal AC	220 - 240

Alimentação elétrica

Comprimento	5000
-------------	------

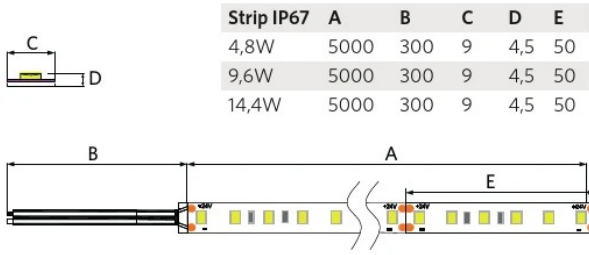
Condições de aplicação

Temperatura de funcionamento	-10 - 45 °C
Temperatura de aplicação	25 °C
Temperatura de armazenamento	-25 - 50 °C



Dimensões (mm)

Strip IP67	A	B	C	D	E
4,8W	5000	300	9	4,5	50
9,6W	5000	300	9	4,5	50
14,4W	5000	300	9	4,5	50



The image contains two technical drawings of a strip light. The top drawing is a cross-section showing a rectangular profile with a yellow LED chip on top. Dimension 'C' is the width of the chip, and 'D' is the height of the profile. The bottom drawing is a side view of the strip light, showing a long, thin profile with a series of yellow LED chips. Dimension 'B' is the length of the mounting tab on the left. Dimension 'A' is the total length of the strip. Dimension 'E' is the length of a section containing several LED chips. The strip is shown with a break in the middle to indicate its length.