



Fita LED - IP67

- Gama completa de fitas LED
- Ampla gama de perfis com várias opções de cores



Especificações

Código item	Descrição do item	Eficácia (lm/W)	CCT (K)	LEDs por metro	Comprimento mínimo de corte (mm)	Potência por metro (W/m)	Lúmen por metro (lm/M)	Peso Líquido (kg/peça)
IP67								
806001007500	LEDStrip-E 4.8W-940-600-IP67	120	4000	120	50	4.8	600	0.25

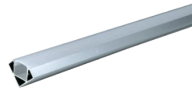
Acessórios



806098002000
LEDStrip Profile-SF-15x15-AL



806098002500
LEDStrip Profile-RC-15x15-AL



806098002600
LEDStrip Profile-Corner-18x18-AL



820002006500
LEDDriver 24V-75W-DALI-IP67



820002006600
LEDDriver 24V-150W-DALI-IP67



820002006700
LEDDriver 24V-240W-DALI-IP67



820003003900
LEDDriver 24V-75W-10V/PWM-IP67



820003004000
LEDDriver 24V-150W-10V/PWM-IP67



820003004100
LEDDriver 24V-240W-10V/PWM-IP67



806098004600
LEDStrip Silicone-Kit-IP67



806098004700
LEDStrip Mounting-Kit-10-IP67

Informações sobre produtos e embalagens

Item			Caixa			
Código item	Descrição do item	Código HS da UE	Dimensões (mm) (CxLxA)	Peso Bruto (kg/peça)	EAN	pc/caixa
806001007500	LEDStrip-E 4.8W-940-600-IP67	94054239	240x220x14	0.34	6941491788586	1
806098002000	LEDStrip Profile-SF-15x15-AL	94059900	2050x33x33	0.20	6931783054406	1
806098002100	LEDStrip Profile-SF-15x15-BL	94059900	2050x33x33	0.20	6931783054413	1
806098002500	LEDStrip Profile-RC-15x15-AL	94059900	2050x33x33	0.20	6931783054451	1
806098002600	LEDStrip Profile-Corner-18x18-AL	94059900	2050x33x33	0.20	6931783054468	1
820009007900	LEDDriver 24V-36W	85369010	200x50x38	0.17	6941491787428	1
820009008000	LEDDriver 24V-60W	85369010	237x50x38	0.23	6941491787435	1
820009008100	LEDDriver 24V-120W	85369010	298x50x38	0.23	6941491787398	1
820009008200	LEDDriver 24V-160W	85369010	298x50x38	0.28	6941491787404	1
820009008300	LEDDriver 24V-240W	85369010	335x51x38	0.28	6941491787411	1
820002006100	LEDDriver 24V-40W-DALI/10V/PWM	85369010	188x45x32	0.21	6941491788197	1
820002006200	LEDDriver 24V-75W-DALI/10V/PWM	85369010	301x46x37	0.44	6941491788203	1
820002006300	LEDDriver 24V-150W-DALI/10V/PWM	85369010	301x46x37	0.44	6941491788210	1
820002006400	LEDDriver 24V-240W-DALI/10V/PWM	85369010	366x46x37	0.63	6941491788227	1
820002006500	LEDDriver 24V-75W-DALI-IP67	85369010	310x82x27	0.84	6941491788234	1
820002006600	LEDDriver 24V-150W-DALI-IP67	85369010	310x82x27	0.83	6941491788241	1
820002006700	LEDDriver 24V-240W-DALI-IP67	85369010	290x85x31	1.08	6941491788258	1
820003003900	LEDDriver 24V-75W-10V/PWM-IP67	85369010	310x82x27	0.81	6941491788265	1
820003004000	LEDDriver 24V-150W-10V/PWM-IP67	85369010	310x82x27	0.85	6941491788272	1
820003004100	LEDDriver 24V-240W-10V/PWM-IP67	85369010	290x85x31	1.08	6941491788289	1
806098004600	LEDStrip Silicone-Kit-IP67	32141010	61x12x11	0.04	6931783054369	1
806098004700	LEDStrip Mounting-Kit-10-IP67	39174000	21x12x9	0.04	6931783054376	1
822010000700	LEDStrip RGBW/TW/DIM-BLE2-Controller	94059200	120x57x31	0.09	6937209623362	1

Especificações Técnicas

Vida útil (L70)	50 000
Regulação	DALI2 / 1-10V / PWM
IRC	> 90
Grau de proteção (IP)	IP67
Grupo de risco (EN 62471)	RG0
Com equipamento de controle	False

Alimentação elétrica

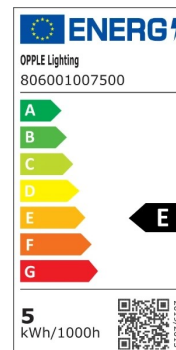
Frequência	50 - 60
Tensão nominal AC	220 - 240

Alimentação elétrica

Comprimento	5000
-------------	------

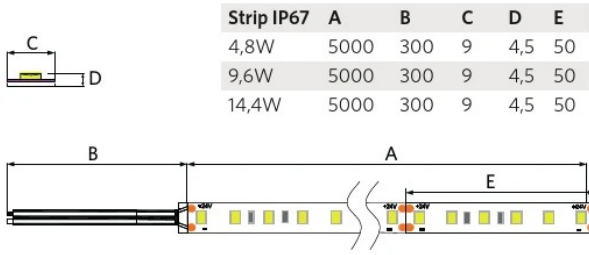
Condições de aplicação

Temperatura de funcionamento	-10 - 45 °C
Temperatura de aplicação	25 °C
Temperatura de armazenamento	-25 - 50 °C



Dimensões (mm)

Strip IP67	A	B	C	D	E
4,8W	5000	300	9	4,5	50
9,6W	5000	300	9	4,5	50
14,4W	5000	300	9	4,5	50



The technical drawing illustrates the dimensions of the Strip IP67. The top-left diagram shows a cross-section with dimension C representing the width of the LED chip and dimension D representing the height of the chip. The bottom diagram shows a side view of the strip with dimension B representing the length of the mounting section, dimension A representing the total length of the strip, and dimension E representing the length of the LED section.