



Linear Sport

- Premium linear luminaire designed for indoor sports lighting, delivering comfortable illumination with UGR < 21
- Robust housing with IK10 and certified ball-proof protection
- Standard D4i driver enables advanced energy monitoring and smart-ready functionality
- Through-wiring on both ends ensures quick and efficient installation
- Supports multiple mounting options, including surface, suspended, and recessed installation



Specifications

Item Code	Item Description	Equivalent to (W)	Power (W)	Lumen (lm)	CCT (K)	Beam angle	Net Weight (kg/pc)
DALI2/D4i							
545007006400	LEDLinear-Sport-P L15-90W-D4i-840	TL 1x80W	90	16200	4000	90°	3.3

Accessories



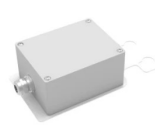
545007006700
LEDLinear-Sport-P
Suspension-Kit



545007005900
LEDLinear-Sport-P Rotate-
Bracket



545007006500
LEDLinear-Sport-P
Recessed-Kit



545007006300
LEDLinear-Sport-P BLE2-
Converter

Packaging information

Item			Box			
Item Code	Item Description	EU HS Code	Dimensions (mm) (LxWxH)	Gross Weight (kg/pc)	EAN	pc/box
545007006400	LEDLinear-Sport-P L15-90W-D4i-840	94051190	1540x137x110	3.55	6937209634122	1
545007006700	LEDLinear-Sport-P Suspension-Kit	94059900	2040x90x90	0.37	6937209634160	1
545007005900	LEDLinear-Sport-P Rotate-Bracket	94059900	130x120x124	0.75	6937209634177	1
545007006500	LEDLinear-Sport-P Recessed-Kit	94059900	144x70x90	0.23	6937209634184	1
545007006300	LEDLinear-Sport-P BLE2-Converter	94059900	240x140x99	0.74	6937209634191	1

Technical Specifications

Lifetime (L70)	100,000 h
Lifetime (L80)	70,000 h
On-/Off-cycles	100,000
Colour consistency (SDCM)	4
Dimmability	D4i
Finishing	White RAL9016
RAL-Number	9016
Colour rendering index (CRI)	> 80
UGR	21
Ingress protection (IP)	IP23
Impact strength (IK)	IK10
Protection class	I
Risk group (EN 62471)	RG0
With control gear	True
Glow wire test	650 °C
Driver failure rate (at 5,000 hrs)	≤ 1 %
Power factor	≥ 0.96
Surge protection (kV)	2 kV

Electrical Supply

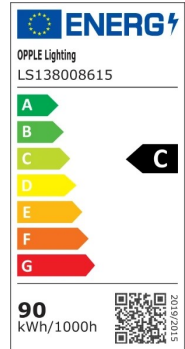
Frequency	50 - 60 Hz
Nominal voltage	220 - 240 V
DC input voltage	See catalogue appendix Connection Specifications
[Connectable conductor cross section]	1 - 2.5

Mechanical Properties

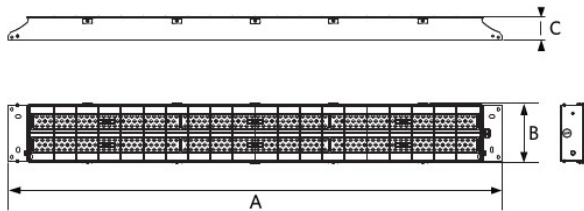
Housing material	Steel
------------------	-------

Ambient Conditions

Operating temperature	-30 - 50 °C
Application temperature	25 °C
Storage environment	-30 - 60 °C



Dimensional Drawing (mm)



Type	A	B	C
90W	1500	97	70
180W	1500	181	70

Photometric Data

