



Linear Sport

- Premium linear luminaire designed for indoor sports lighting, delivering comfortable illumination with UGR < 21.
- Robust housing with IK10 and certified ball-proof protection.
- Standard D4i driver enables advanced energy monitoring and smart-ready functionality.
- Optional BLE2 converter kit provides effortless upgrade to wireless lighting control in the Opple smart system
- Through-wiring on both ends ensures quick and efficient installation.
- Supports multiple mounting options, including surface, suspended, and recessed installation.



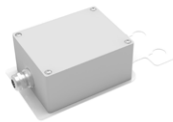
Specifications

Item Code	Item Description	Equivalent to (W)	Power (W)	Lumen	CCT (K)	Beam angle	Net Weight (kg/pc)
DALI2/D4i							
545007006400	LEDLinear-Sport-P L15-90W-D4i-840	TL 1x80W	90	16200	4000	90°	3.3
545007006900	LEDLinear-Sport-P L15-180W-D4i-840	TL 2x80W	180	32400	4000	90°	5.4

Accessories



545007005900
LEDLinear-Sport-P Rotate-Bracket



545007006300
LEDLinear-Sport-P BLE2-Converter



545007006500
LEDLinear-Sport-P Recessed-Kit



545007006700
LEDLinear-Sport-P Suspension-Kit

Technical Specifications	
Lifetime (L70)	100,000 h
Lifetime (L80)	70,000 h
On-/Off-cycles	100,000
Colour consistency (SDCM)	4
Dimmability	D4i
Finishing	White RAL9016
RAL-Number	9016
Colour rendering index (CRI)	> 80
UGR	21
Ingress Protection (IP)	IP23
Impact strength (IK)	IK10
Protection class	I
Risk group (EN 62471)	RG0
With control gear	Yes
Glow wire test	650°C
Driver failure rate (at 5,000 hrs)	< 1%
Power factor	> 0.96 / 0.97
Surge protection (kV)	2kV

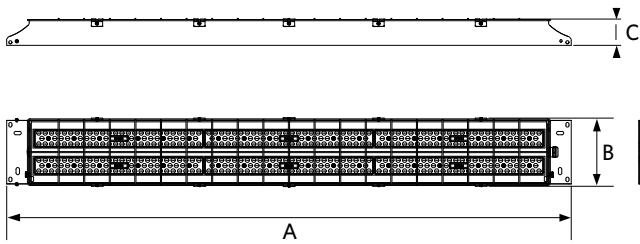
Electrical Supply	
Frequency	50 - 60 Hz
Nominal voltage	220 - 240 V
DC input voltage	See catalogue appendix Connection Specifications

Mechanical Properties	
Housing material	Steel

Ambient Conditions	
Operating temperature	-30 - 50°C
Application temperature	25°C
Storage environment	-30 - 60°C



Dimensional Drawing (mm)



Type	A	B	C
90W	1500	97	70
180W	1500	181	70