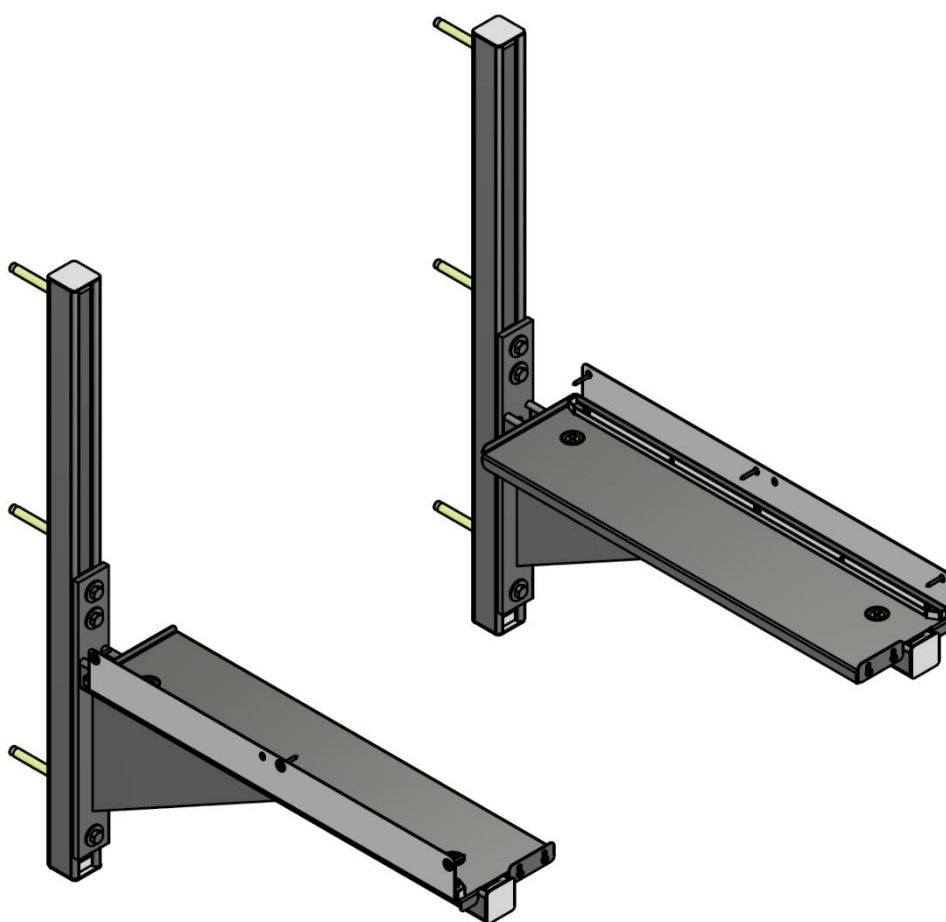


# **Vent-Axia®**

## Econiq Cool-Flow Wall Mounting kit

Original instruction, Installation



**Stock Ref. N°**

414291 - Wall Mount Kit

**Part of Sentinel Econiq Cool-Flow Wall Mounted**

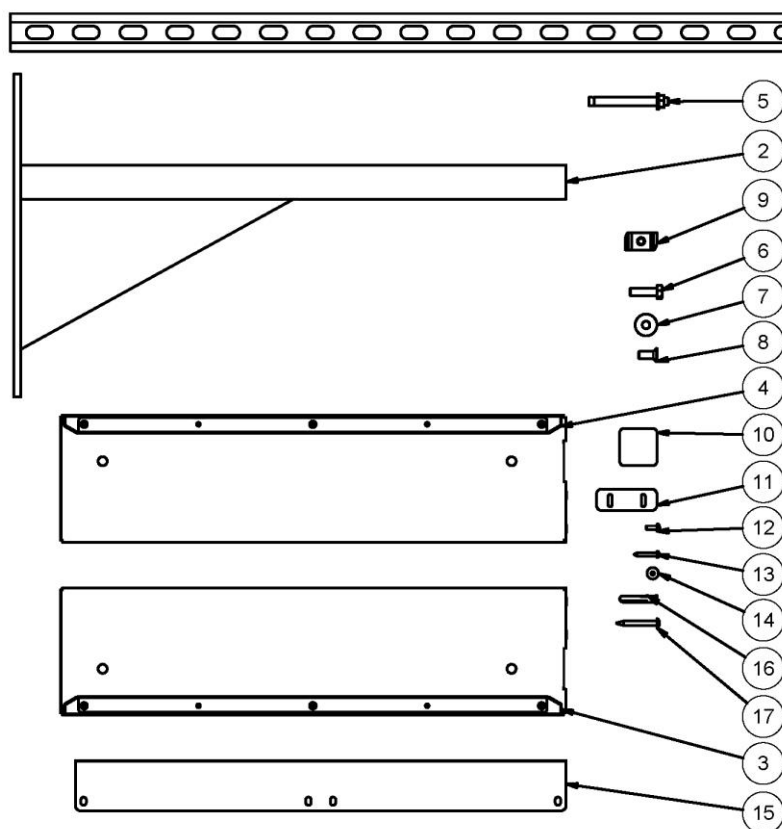


**PLEASE READ THESE INSTRUCTIONS CAREFULLY  
BEFORE COMMENCING INSTALLATION.**

**PLEASE REFER TO ACCOMPANYING DOCUMENTATION  
FOR INFORMATION SPECIFIC TO YOUR UNIT.  
PLEASE RETAIN THESE INSTRUCTIONS WITH THE  
PRODUCT.**

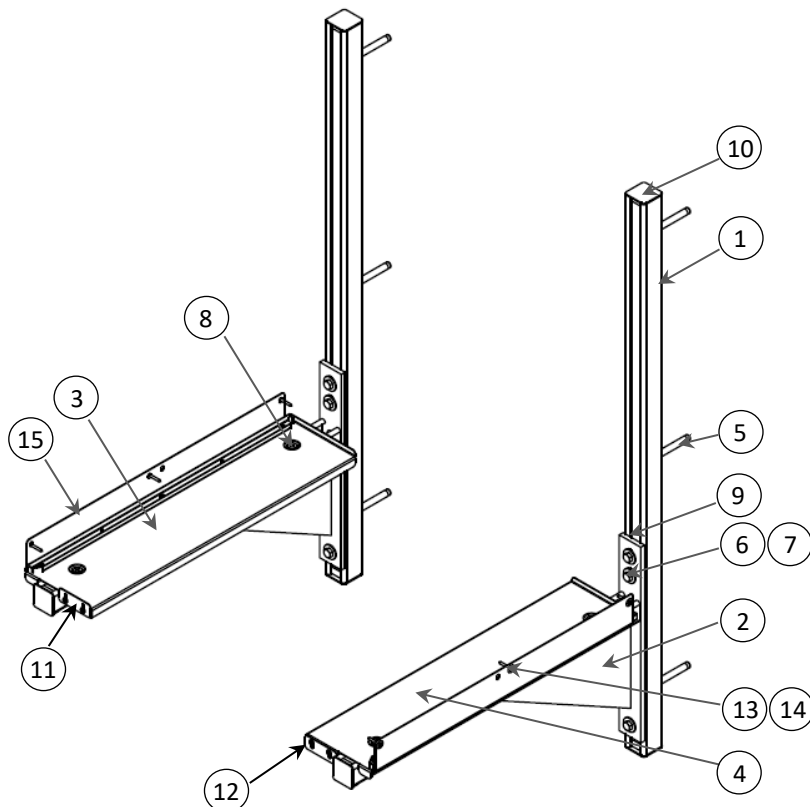


## Kit Contents

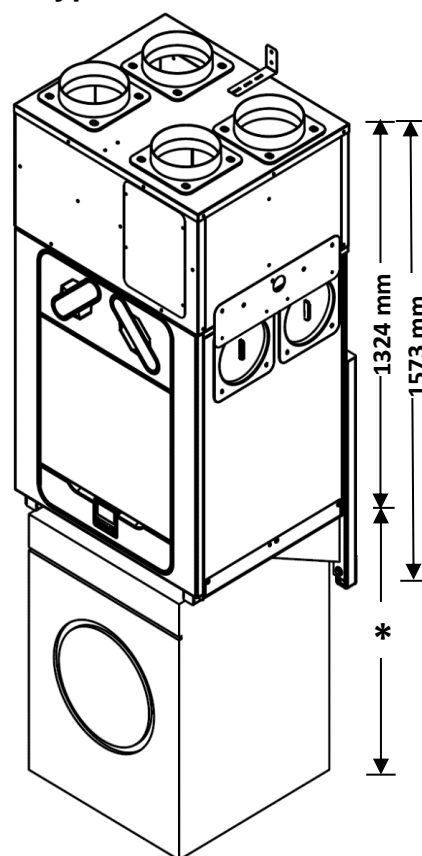


Item	Qty	Description
1	2	CHANNEL
2	2	CANTILEVER ARM
3	1	BRACKET PLATE LH
4	1	BRACKET PLATE RH
5	6	WALL BOLT
6	6	HEX BOLT M8 X 30
7	12	WASHER M8
8	4	SCREW M8 X 20
9	10	CHANNEL NUT
10	6	END CAP
11	2	BRACKET END PLATE
12	10	SCREW M4 X 12
13	6	SCREW SELF TAP SHORT
14	12	WASHER M4
15	2	SIDE CLAMP
16	2	WALL PLUG
17	2	SCREW SELF TAP LONG

## Bracket Set Assembled

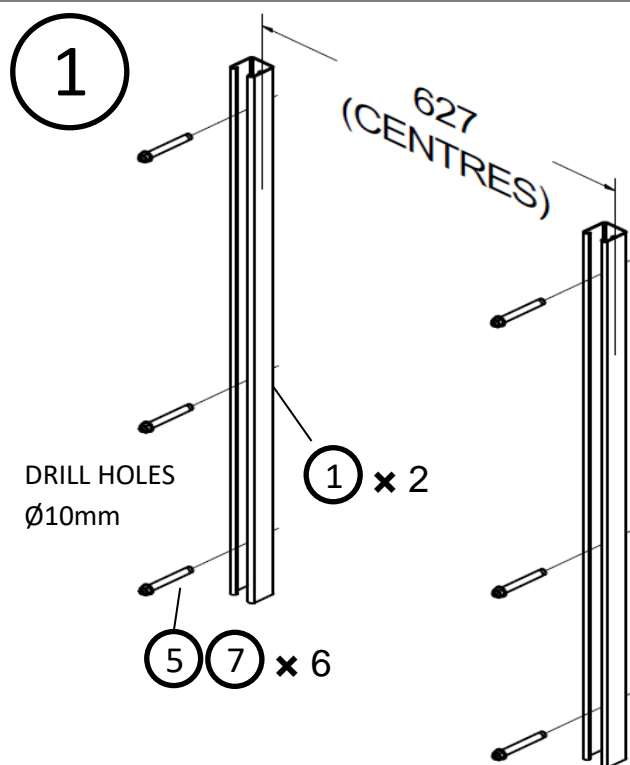


## Typical Installation



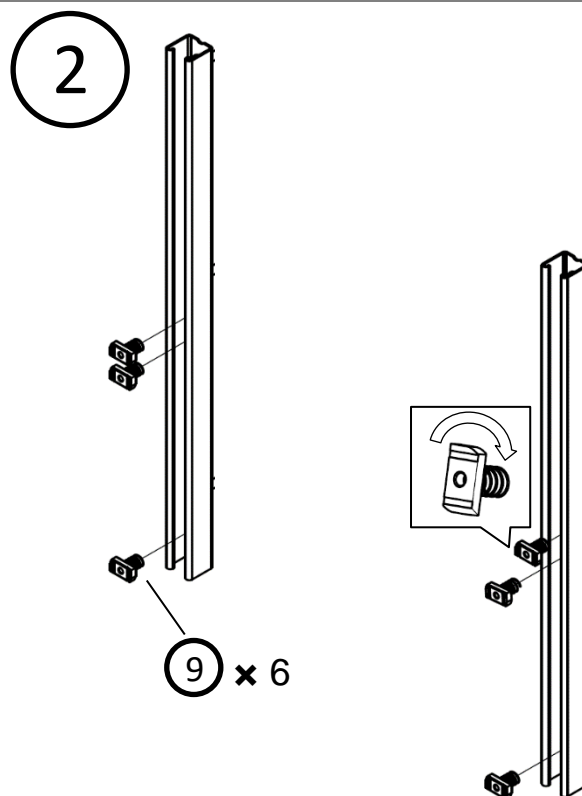
The assembled unit's weight is 93kg plus 14kg for the wall bracket (107kg total) and should only be mounted on walls capable of bearing their weight i.e. a solid masonry wall or a stud wall that has been specially constructed with extra reinforcement.

\* Ensure there is adequate height to fit a household appliance underneath if required. A standard width appliance of 600mm will fit between the web of the brackets.

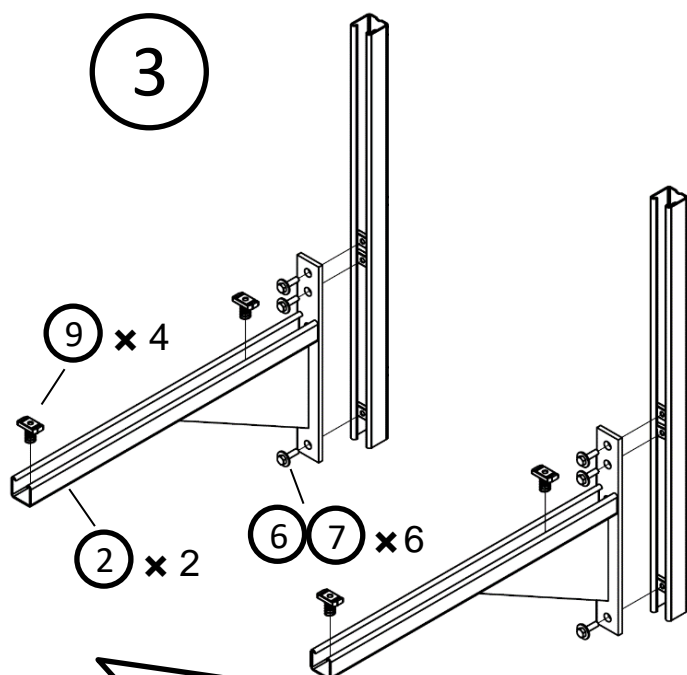


Fix the Channels at required height on the wall and secure them using the M8 wall bolts and washers as shown.

**Note:** The wall bolts are designed for concrete or solid masonry walls. Alternative fixing methods will be necessary for other wall types. Consult a specialist if unsure.

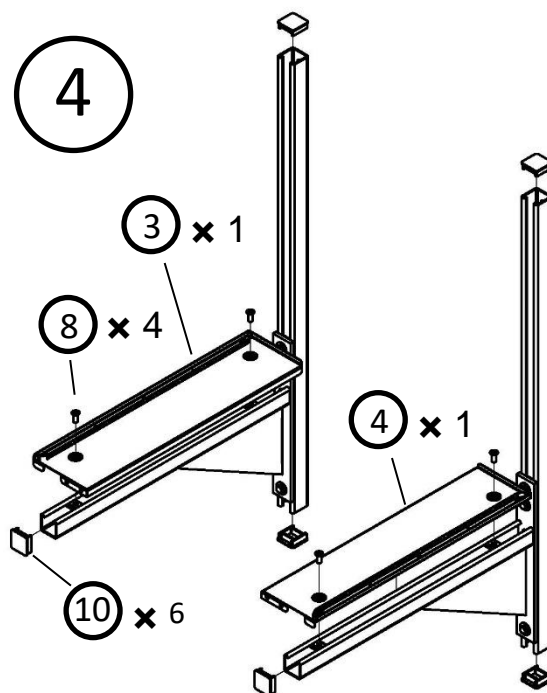


Fit the Channel nuts in six positions. They will need to line up with the two cantilever arms.



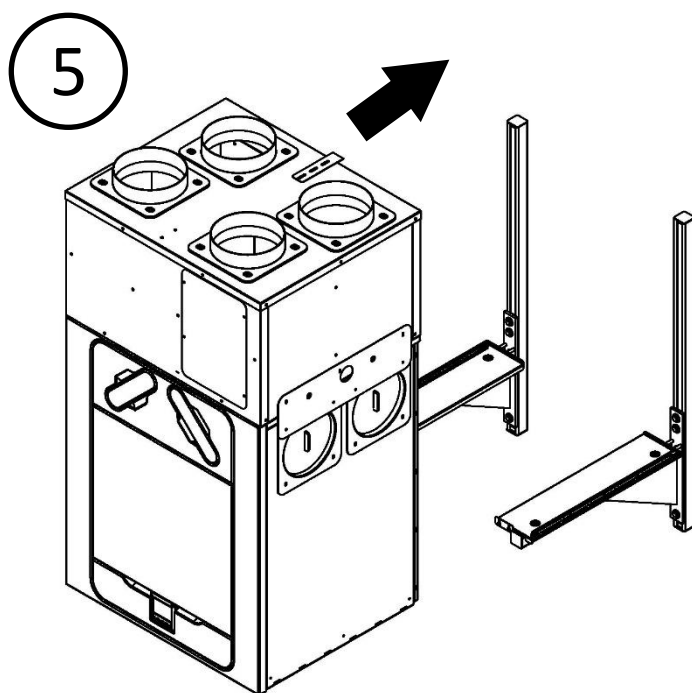
Fit the Cantilever Arms to the Channel Nuts using the Washers and bolts provided.

Place the Channel Nuts in the Cantilever Arms as shown. They will need to line up with the LH & RH Bracket Plates in four positions.



Place the Bracket plates as shown using the M8 x20 screws provided.

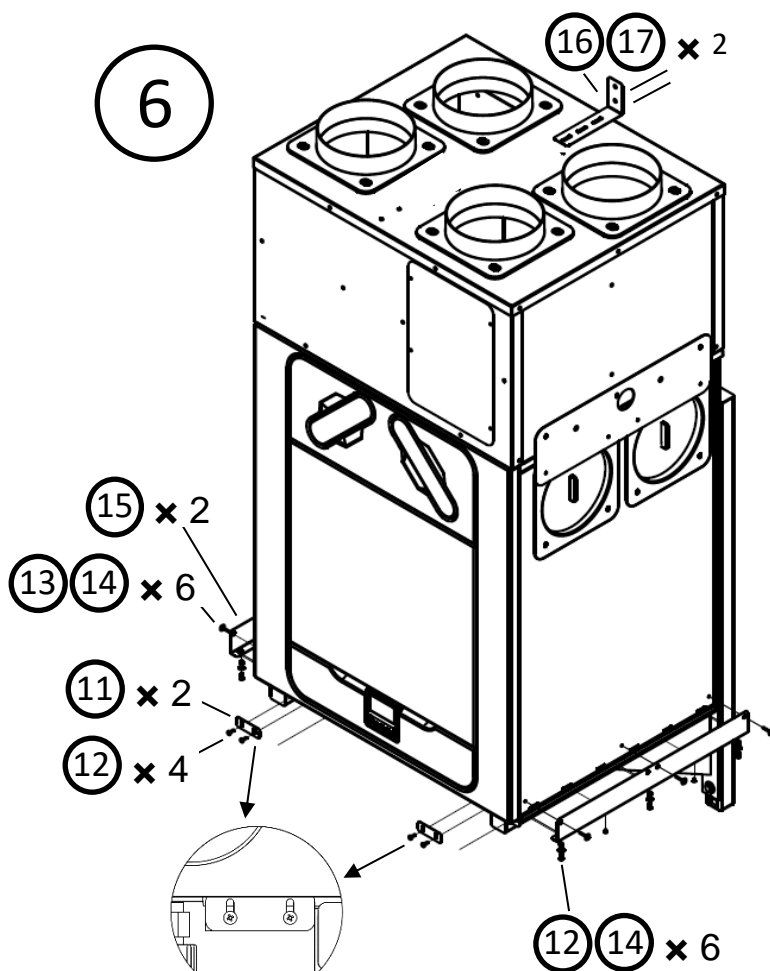
Place the End caps in six positions at the open ends of the channels and cantilever arms.



**Note:** Assemble the Econiq Cool - Flow unit as in instruction leaflet (Part No. 414181).

Unscrew the anti-tilt bracket from the top of the unit.

Once assembled use properly rated lifting equipment, raise the unit and carefully slide it onto the mounted wall brackets as shown.



Secure the unit with the side clamps using the provided screws and washers as shown.

Reattach the anti-tilt bracket other way up and fix to the wall using the wall plugs and screws.

## Vent-Axia.

### UK Head Office:

Vent-Axia, Fleming Way, Crawley, West Sussex, RH10 9YX

EU Authorised Representative: Vent-Axia Sigarenmaker 5 - 5521DJ Eersel Nederland [authorisedrep@vent-axia.nl](mailto:authorisedrep@vent-axia.nl)

### CALL CENTRE: -

**Sales Enquiries:**

Tel: 0344 8560590

Email: [sales@vent-axia.com](mailto:sales@vent-axia.com)

**Technical Support:**

Tel: 0344 8560594

Email: [tech@vent-axia.com](mailto:tech@vent-axia.com)