

# Vent-Axia®

## Instruction for Fitting 0V to 10V Analogue I/O PCB accessory 472701

Read this in conjunction with the "Installation and commissioning" document supplied with your unit.



### WARNING

THE FAN AND ANCILLARY CONTROL EQUIPMENT MUST BE ISOLATED FROM THE POWER SUPPLY DURING ANY MAINTENANCE AND WHEN FITTING THIS CONTROL MODULE.

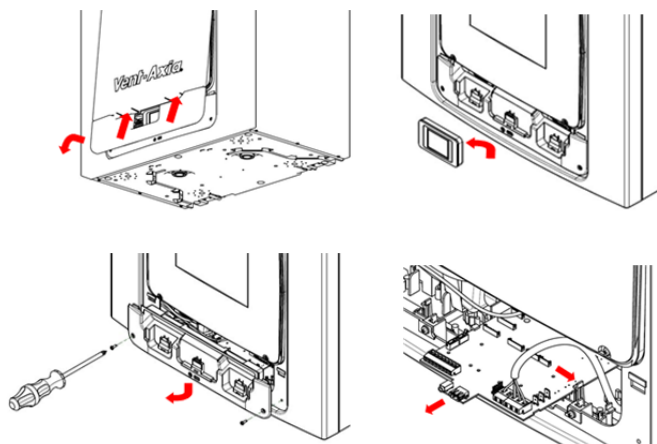
### Description.

The Analogue I/O board has two 0-10V inputs for proportional sensors, and two 0-10V outputs for proportional dampers.

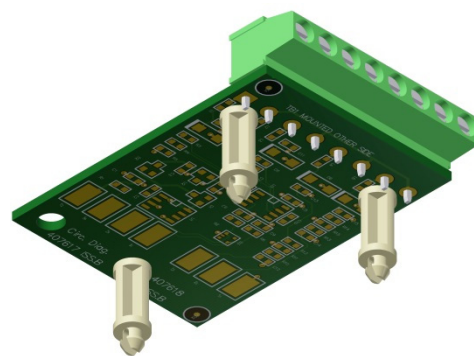
Note: The proportional sensors and dampers require their own power supply.

### Installation.

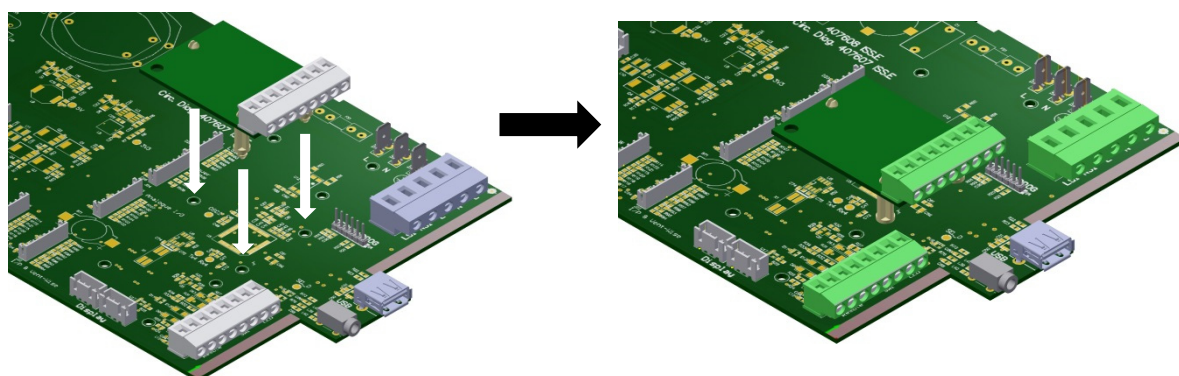
1. Access the main printed circuit board following the electrical installation instruction in the "Installation & Commissioning" document supplied with your unit, or download the instructions from <http://www.vent-axia.com/range/sentinel-kinetic-advance.html>



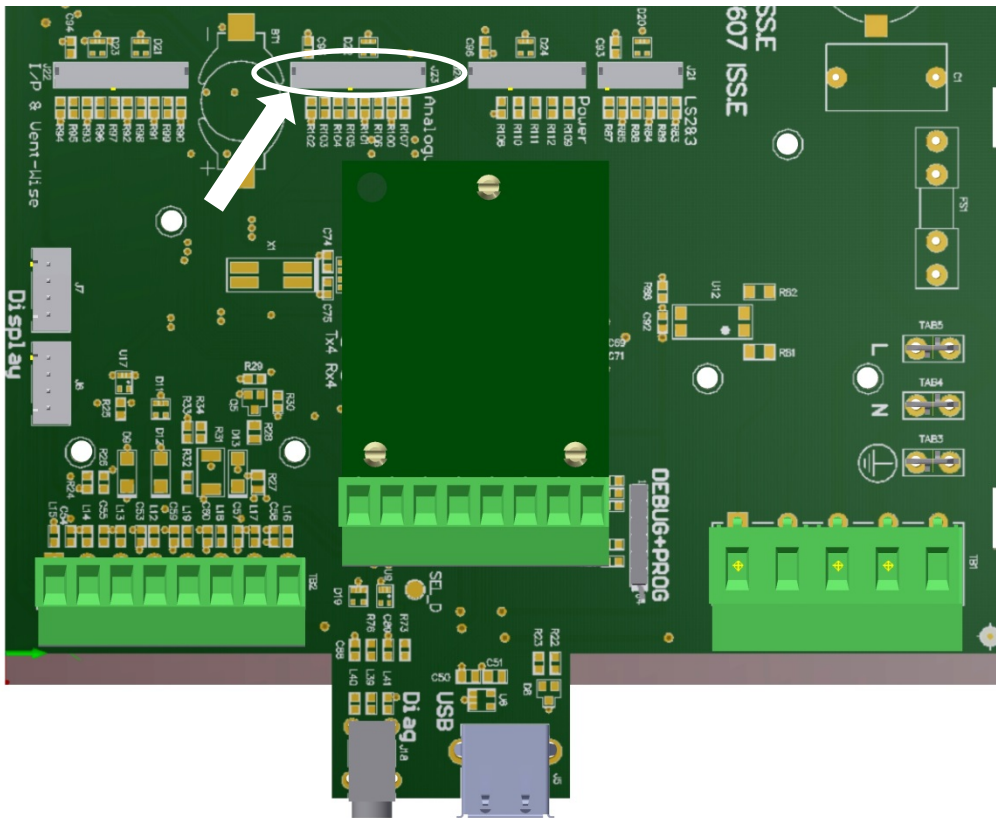
2. Fit the three plastic stand-offs provided, into the three holes in the Analogue I/O PCB.



3. Fit the Analogue I/O PCB to the Main PCB in position shown.



4. Connect the lead from Analogue I/O PCB into the socket marked “Analogue I/O” shown below.



5. For routing the sensor leads into the unit, reference the electrical installation instruction in the “Installation & Commissioning” document supplied with your unit.
6. For the siting of the Temperature, Humidity and CO2 proportional sensors refer to their instructions.
7. For connecting proportional sensors, connect the ground (0V) from the sensor to the terminal P1- of Analogue board and the 0–10V signal from sensor to the terminal P1+ of Analogue board. For additional sensor repeat above using P2 terminal.
8. For the siting of the proportional dampers refer to their instructions.
9. For connecting proportional dampers, connect the ground (0V) from the damper to the terminal V1- of Analogue board and the 0–10V signal input from damper to the terminal V1+ of Analogue board. For additional sensor repeat above using V2 terminal.
10. To set up the speed, type and operating range. This is done in the Kinetic Advance firmware, to program these features refer to the “Installation & Commissioning” document supplied with your unit.
11. After set up, test the inputs and outputs function as required.

# Vent-Axia®

UK NATIONAL CALL CENTRE, Newton Road, Crawley, West Sussex, RH10 9YX

TECHNICAL SUPPORT

Tel: 0844 8560594

Fax: 01293 532814

For details of the warranty and returns procedure please refer to [www.vent-axia](http://www.vent-axia) or write to Vent-Axia Ltd, Fleming Way, Crawley